



Viral-Associated Lymphoproliferative Disorders:

Focus on EBV+ Lymphoproliferative Disorders in Immune Deficiency and Dysregulation

Yasodha Natkunam MD, PhD

Ronald F. Dorfman MBBCh FRCPath Professor of Hematopathology
Stanford University School of Medicine
Stanford, California, USA

1

Human Viral Oncogenesis



- **12% of human cancers worldwide are caused by oncogenic viruses**
 - >80% of cases are in low- and middle-income countries
- **IARC Group 1 Biological Carcinogenic Agents**
 1. Epstein-Barr Virus (EBV)
 2. Hepatitis B Virus (HBV)
 3. Hepatitis C Virus (HCV)
 4. High-risk Human Papilloma Viruses (HPV)
 5. Human T lymphotropic virus-1 (HTLV-1)
 6. Human Immunodeficiency Virus (HIV)
 7. Kaposi Sarcoma/Human Herpesvirus 8 (KSHV/HHV8)

2

Classification of Viral-Associated LPD: EBV



Mature B-cell neoplasms

- EBV-positive DLBCL
 - Lymphomatoid granulomatosis
 - DLBCL-associated with chronic inflammation
 - Fibrin-associated LBCL
 - Plasmablastic lymphoma
 - Primary LBCL of immune privileged sites
- **Lymphoproliferations and lymphomas arising in immune deficiency and dysregulation**
 - Hyperplasias arising in IDD
 - Polymorphic LPD arising in IDD
 - EBV+ mucocutaneous ulcer
 - Lymphomas arising in IDD
 - Inborn errors of immunity-associate LPD

T- and NK-cell neoplasms

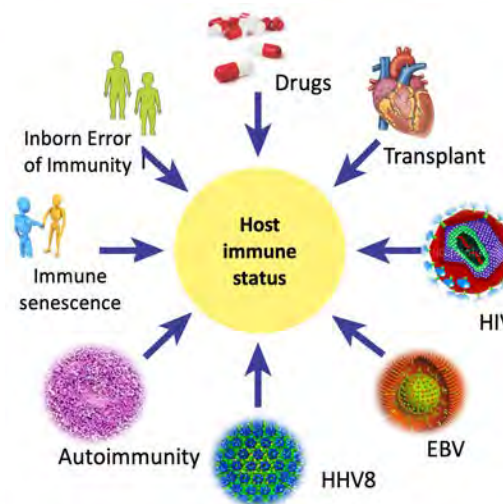
- Aggressive NK leukemia
- **EBV+ T-cell and NK-cell lymphomas**
 - EBV+ nodal T- and NK-cell lymphoma
 - Extranodal NK/T-cell lymphoma
- **EBV+ T-cell and NK-cell LPD and lymphomas of childhood**
 - Severe mosquito-bite allergy
 - Hydroa vacciniforme LPD
 - Systemic chronic active EBV
 - Systemic EBV-positive T-cell lymphoma of childhood

3

Immune Deficiency & Dysregulation



- Clinicopathologically and etiologically heterogeneous spectrum of lymphoproliferative disorders and lymphomas, ranging from hyperplasias to aggressive lymphomas
- Arise in different backgrounds or predisposing contexts (“settings”)
- Often but not always associated with oncogenic viruses
- Recognition of an underlying immune deficiency is important to optimize clinical management



4

WHO-HAEM4R

Post-transplant LPDs
- Non-destructive PTLD
- Polymorphic PTLD
- Monomorphic PTLD
- CHL-PTLD

Lymphomas associated with HIV infection
- Also occurring in immunocompetent patients
- Specific to HIV
- Also in other immunodeficiency states

Other iatrogenic immunodeficiency-associated LPDs
- CHL-like
- EBVMCU
- CHL
- B-cell lymphomas
- T-cell lymphomas


LPDs associated with primary immune disorders
- Non-neoplastic proliferations
- Lymphomas/leukaemias

Past Classifications

Historically classified according to the background in which they arise:


1. Post-transplant
2. HIV-infection
3. Iatrogenic immunodeficiency
4. Primary immune deficiency

Classification aptly served clinicopathologic needs for many years



5

Need for Reappraisal



- Inconsistent terminology and diagnostic criteria applied to similar lesions in different settings
- Inability to assimilate new and expanding spectrum of LPDs and risk factors
 - Immune senescence in an aging population
 - Novel agents including CAR-T
 - New types of inborn errors of immunity
- Insights based on 2015 SH/EAHP Workshop

WHO-HAEM4R	WHO-HAEM5	Setting
Post-transplant LPDs - Non-destructive PTLD - Polymorphic PTLD - Monomorphic PTLD - CHL-PTLD	Hyperplasias - Follicular hyperplasia - Mononucleosis-like hyperplasia - Plasma cell hyperplasia - KSHV/HHV8 MCD	Post-transplantation, HIV, iatrogenic/auto-immune, IEI
Lymphomas associated with HIV infection - Also occurring in immunocompetent patients - Specific to HIV - Also in other immunodeficiency states	Polymorphic LPDs EBVMCU	Immune deficiency / dysregulation settings
Other iatrogenic immunodeficiency-associated LPDs - CHL-like - EBVMCU - CHL - B-cell lymphomas - T-cell lymphomas	Lymphoma	Immune deficiency / dysregulation settings
LPDs associated with primary immune disorders - Non-neoplastic proliferations - Lymphomas/leukaemias	LPDs specific to IEI	IEI

SH-EAHP Workshop, 2015; Natkunam et al, Blood 2018
Alaggio et al. Leukemia 2022; WHO HAEM5 2022

6

Choices Made in WHO HAEM5



Overarching Framework

- Integrates entire spectrum of LPDs in all immune deficiency settings
- Not only immune deficiency but also immune dysregulation (IDD)
- Better represents shared or unique pathogenetic mechanisms across all IDD
- Primary immune deficiencies renamed “**Inborn Errors of Immunity**” (IEI) to match naming by International Union of Immunologic Societies

Unifying Three-Part Nomenclature

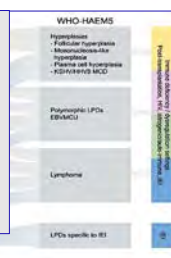
- **Histologic diagnosis**
- **One or more oncogenic viruses**
- **Distinct setting of immune deficiency or dysregulation**

7

Overarching Framework & Nomenclature



- Hyperplasias
- Polymorphic lymphoproliferative disorders
- Lymphomas (classified as for immune competent patients)




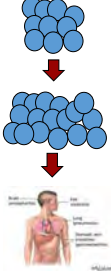
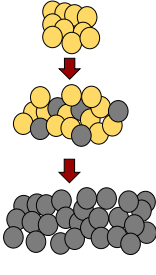
Examples of new nomenclature

- Follicular hyperplasia, **EBV+**, **post-transplant setting** (post-transplant lymphoproliferative disorder)
- Polymorphic lymphoproliferative disorder, **EBV+**, **Rheumatoid Arthritis/Methotrexate**
- Primary effusion lymphoma, **KSHV/HHV8+**, **EBV+**, **HIV setting**
- Extranodal marginal zone lymphoma, **EBV+**, **Chronic Variable immunodeficiency**
- Diffuse large B-cell lymphoma, **EBV-**, **suspected immune senescence**

8

Clinical Considerations



<p>Name of virus esp. important for hyperplasias (early/non-destructive lesions)</p> <div style="display: flex; justify-content: space-around;"> <div style="text-align: center;"> <p>CMV</p>  <p>Can be lethal but not transforming</p> </div> <div style="text-align: center;"> <p>EBV</p>  <p>Transformation of infected B-cells</p> </div> </div>	<p>Virus-specific treatment options</p> <div style="display: flex; flex-direction: column; gap: 10px;"> <div style="border: 1px solid #0056b3; padding: 5px; background-color: #0056b3; color: white; border-radius: 5px;">Restoring T-cell function</div> <ul style="list-style-type: none"> Reduction of immune suppression Adoptive immunotherapy <div style="border: 1px solid #0056b3; padding: 5px; background-color: #0056b3; color: white; border-radius: 5px;">Reducing tumor burden</div> <ul style="list-style-type: none"> Local therapy Rituximab +/- chemotherapy <div style="border: 1px solid #0056b3; padding: 5px; background-color: #0056b3; color: white; border-radius: 5px;">Targeting EBV</div> <ul style="list-style-type: none"> Inducers of lytic cycle Antiviral agents </div>	<p>Opportunity for larger and more inclusive clinical trials</p> <div style="text-align: center; border: 1px solid #0056b3; padding: 10px;"> <div style="background-color: #800000; color: white; padding: 5px; margin-bottom: 5px;">Exclusion criteria for clinical trials</div> <div style="background-color: #0056b3; color: white; padding: 5px; margin-bottom: 5px;">CNS involvement</div> <div style="background-color: #0056b3; color: white; padding: 5px; margin-bottom: 5px;">Immunomodulating agents</div> <div style="background-color: #0056b3; color: white; padding: 5px; margin-bottom: 5px;">Prior transplantation</div> <div style="background-color: #0056b3; color: white; padding: 5px; margin-bottom: 5px;">HIV infection</div> <div style="color: red; font-size: 2em; margin: 5px 0;">↓</div> <div style="background-color: #0056b3; color: white; padding: 10px; font-weight: bold; font-size: 1.2em;">ALL IDD-LPD</div> </div>
--	---	---

Courtesy of Dr. Daan Dierickx

9

Specific Associations & New Contexts

Recognition of specific causal associations

- HSTCL in IBD patients treated with TNF antagonists
- T-PLL in Ataxia Telangiectasia and Nijmegen breakage syndrome

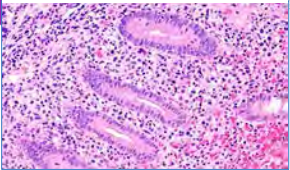
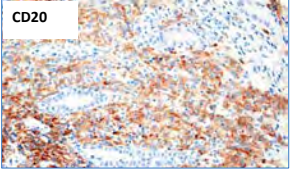
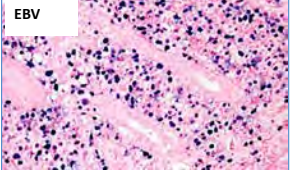
Impact of next generation targeted therapies

- EBV+ DLBCL arising in pt treated with CAR-19 therapy for DLBCL

Immune senescence as a valid IDD setting

- More common in older adults
- Pathogenesis likely multifactorial: chronic antigen stimulation (“inflammaging”), CD8-repertoires, clonal hematopoiesis etc
- Objective criteria to formulate disease definitions are not currently available and await further data**
 - Unresolved boundaries with EBV+ DLBCL and lymphomatoid granulomatosis

DLBCL, EBV+, Post-CAR T-cell therapy

WHO HAEM5 2022
 Gammon et al. JAAD 2014 ; Nikolich-Zugich, Nat Immunol 2018
 Walker et al. J Clin Invest. 2022; Lu et al. Nat Commun 2022

10

Hyperplasias

WHO HAEM5 Essential & Desirable Criteria



Essential

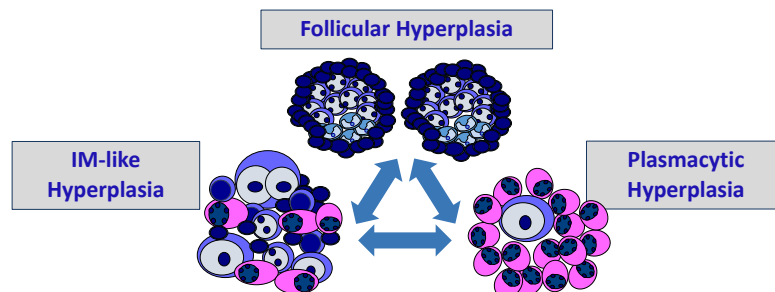
- Setting confirmed or highly suspicious for immune deficiency/dysregulation
- Lack of architectural effacement
- Heterogeneous lymphoid or plasmacytic proliferations without atypia
- One of the following features:
 - Detection of EBV/EBER in tissue (EBV viral load in blood not sufficient)
 - Detection of KSHV/HHV8 in multicentric Castleman disease
 - Other specific features related to IDD (e.g. CD4/CD8 DNT-cells in ALPS)

11

EBV+ B-Cell Hyperplasias



- Mass forming and non-destructive
- **Clinically important to separate EBV+ lesions from other causes of hyperplasia**
- Polytypic kappa/lambda light chains
- Occasional clonal *IG* or simple karyotypes, not indicative of malignancy
- Regress spontaneously or in response to immune reconstitution



Courtesy of Dr. John Goodlad, AJCP 2017

12

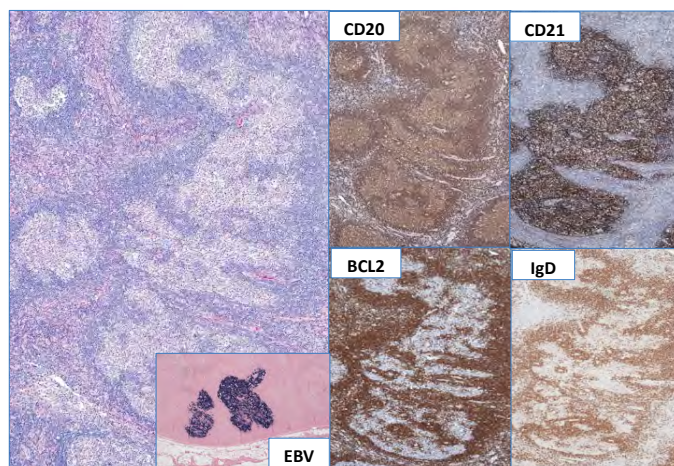
Hyperplasias: Post-Targeted Therapy



Targeted therapy agent (TKI) expands the spectrum of IDD-associated hyperplasias

- 54M with *BCR-ABL1+* CML
- Moderate response to imatinib followed by complete molecular response to dasatinib
- 6 months later, presented with an enlarged mandibular lymph node
- Florid follicular hyperplasia with mantle zone involution (PTGC-like) and perforating capillaries (Castleman-like)

Hyperplasia, EBV+ (focal), post-dasatinib therapy



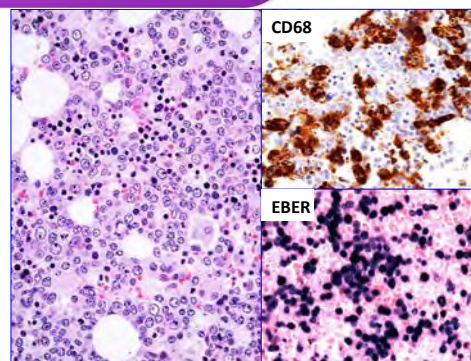
WHO HAEM5 2022

13

T-Cell Hyperplasias



- Extranodal T-cell expansions
 - ALPS (CD4/CD8 DNT cells)
 - IEI settings (CD8 expansions, LGL)
 - Chronic active EBV infection (CAEBV)
- Hemophagocytic lymphohistiocytosis
 - Most often in BM and spleen in HIV or PTLD settings
 - Often driven by EBV or HHV8/KSHV
 - Can accompany LPD/lymphoma
 - Ranges from self-limiting to lethal



HLH: 5 of 8 following criteria:

1. Fever
2. Splenomegaly
3. Cytopenias (>2)
4. ↑ Triglycerides and/or fibrinogen
5. ↑ Ferritin
6. ↑ Soluble CD25/IL-2R
7. ↓ NK activity
8. Hemophagocytosis

14

Polymorphic Lymphoproliferative Disorders

WHO HAEM5 Essential & Desirable Criteria



Essential

- Setting confirmed or highly suspicious for immune deficiency/dysregulation
- Architectural effacement
- Polymorphous infiltrate with a spectrum of stages of B-cell differentiation
- Atypical large cells positive for CD20 (variable), CD30 (variable), and PAX5
- EBV positivity demonstrated in tissue (EBV viral load in blood not sufficient)

15

Polymorphic LPD

Morphology	<ul style="list-style-type: none"> • Heterogeneous lymphoid proliferations • Full range of B-cell maturation stages (small B cells, plasmacytoid B-cells, plasma cells) with variable numbers of immunoblasts and Hodgkin-like cells
------------	--

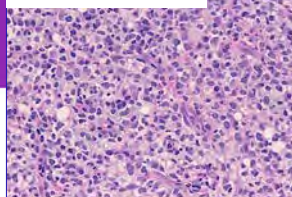
Pathogenesis	<ul style="list-style-type: none"> • Not autonomous and lack major genetic drivers • If immune surveillance is restored, likely to regress
--------------	--

EBV	<ul style="list-style-type: none"> • Driven by EBV in most cases
-----	---

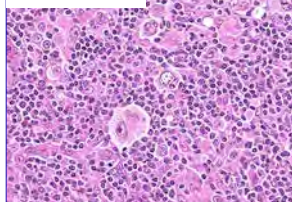
Clonality	<ul style="list-style-type: none"> • Clonal <i>IGH</i> rearrangements are present but may be variable in different settings • Polytypic or monotypic light chain protein expression
-----------	---

Treatment	<ul style="list-style-type: none"> • May respond to immune reconstitution when possible; immunotherapy or immunochemotherapy; • Incremental approach to management is most effective
-----------	--

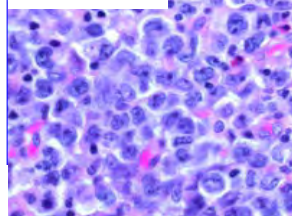
Full B-cell spectrum



Hodgkin-like



Immunoblastic



16

Polymorphic LPD in Autoimmune/Post-Therapy Setting



- Post-therapy LPDs arise in patients treated with immunosuppressive regimens for autoimmune disease
- The underlying autoimmune disease as well as the therapy can contribute to the development of polymorphic LPD, and may depend on disease severity
- Treatment regimens for a wide variety of solid tumors and hematologic malignancies can predispose to IDD-LPDs

****Important to obtain clinical history and prior treatment regimens****

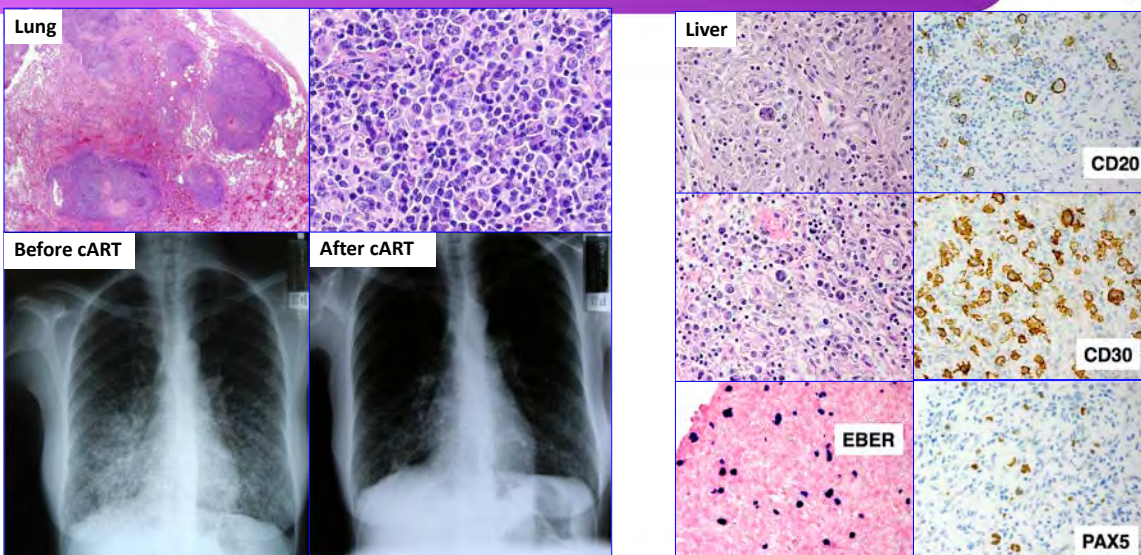
Disorder	Drug
Rheumatoid Arthritis	Methotrexate Steroids Hydroxychloroquine TNF α inhibitor
Aplastic Anemia	ATG Methyprednizone Cyclosporine
Solid tumors and Hematologic Malignancies	Cancer Chemotherapy

Kamel OW et al, AJP 1996; Semin Diagn Pathol 1997; Wolfe F, Michaud K, Arthritis Rheum. 2007; Hasserjian RP et al. Mod Pathol. 2009; Rizzi R, et al. Med Oncol 2009; Wong AK et al, Clin Rheumatol 2012; Ichikawa A et al., Eur J Haematol 2013; Pina-Oveida et al. Am J Surg Pathol 2017; Kurita et al Am J Surg Pathol 2019

17

Polymorphic LPD in HIV/AIDS

Regression after initiation of anti-retroviral therapy



Courtesy of Dr. John Goodlad

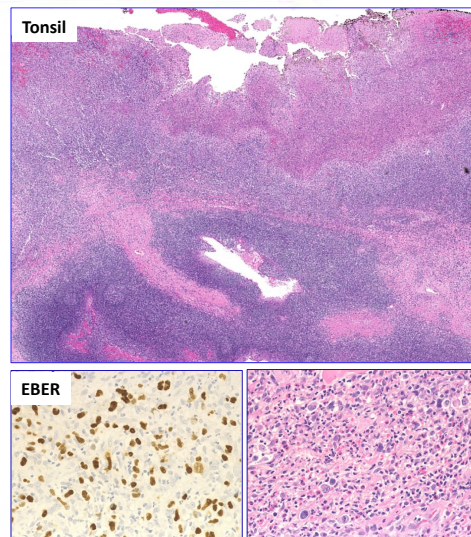
Courtesy of Dr. Jonathan Said

18

EBV+ Mucocutaneous Ulcer



- Well-circumscribed ulcer in the mucosa of oropharynx, gastrointestinal tract or skin
- Occurs in various immunodeficiency settings
- Heterogenous infiltrate with HRS-like cells mimicking Hodgkin lymphoma or EBV+ DLBCL
 - CD30+ EBER+ CD20+/- CD15+/- CD45+
 - Prominent rim of CD3 T-cells at periphery/base of ulcer
 - Clonal IG in 39%, TCR in 38%
- Self-limiting, indolent, responds well to withdrawal of immunosuppression
- Localized defect in immune surveillance

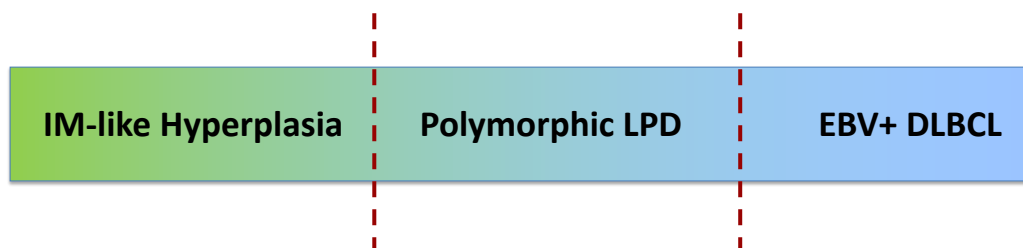


19

Polymorphic LPDs: Additional Questions



- Diagnostic boundaries



- What to do with EBV-negative B-cell proliferations in IDD settings?
- What about EBV+ T-cell proliferations? (+/- HLH; +/- clonality)
- **More data needed for better disease definitions**

20

Lymphoma

WHO HAEM5 Essential & Desirable Criteria



Essential

- Setting confirmed or highly suspicious for immune deficiency and dysregulation
- Meets diagnostic criteria for corresponding lymphomas in immunocompetent patients

Desirable

- Detection of EBV (EBER) and/or KSHV/HHV8 (LANA) in tissue (EBV viral load in blood not sufficient for diagnosis)
- Molecular studies as necessary

21

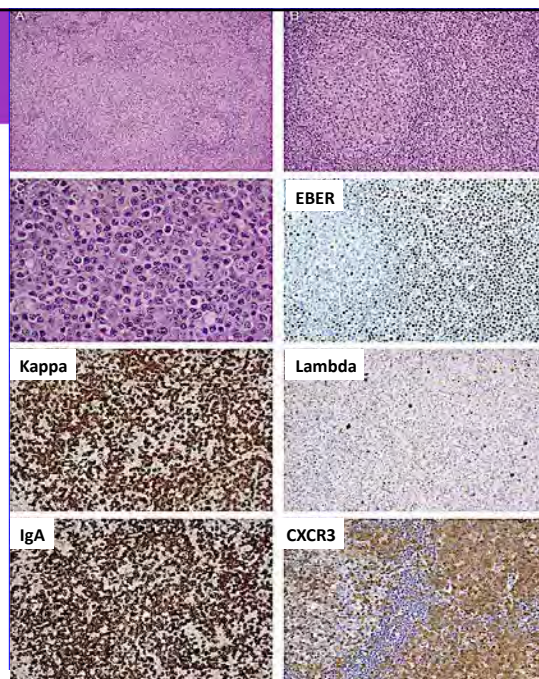
EBV+ Small B-Cell Lymphomas

Relationship with EBV is variable in immunocompetence vs immunodeficiency

In IDD settings:

- Typically, EMZL, LPL, plasmacytoma
- Most often extranodal (cutaneous) with prominent plasmacytoid differentiation
- EBV+ status allows recognition of an IDD setting
- Clinically indolent with good response to reduction of immunosuppression, localized therapy or immunochemotherapy

EBV+ FL and CLL have been reported although the role of EBV is unclear and may be incidental (IDD status unclear)



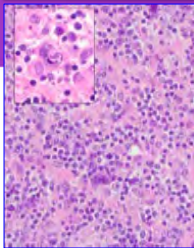
Gibson et al, Am J Surg Pathol 2011
Gong et al, Am J Surg Pathol 2018

22

EBV+ DLBCL

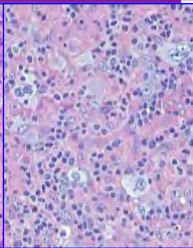
- Variable global incidence, 3-14%
 - Increased incidence with aging (Japan)
- Associated with poor prognosis in older adults
 - Defective immune surveillance/**immune senescence**
 - Difference in microenvironment and/or host factors

DLBCL

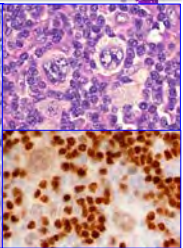


Centroblast/Immunoblast-like
Complete B-cell program
(CD20, CD79a, PAX5, OCT2, BOB1)

THRBCL/Hodgkin-like



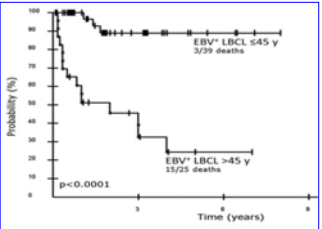
Classic Hodgkin



Hodgkin-like
Defective B-cell program (Aberrant
CD15, GrzB, Perforin)

In IDD settings:

- EBV+ DLBCL exhibits a broader range of morphologic and immunophenotypic variation – true biologic continuum
- May mimic classic Hodgkin lymphoma or THRLBCL
- Important to recognize that clinical behavior may be different from DLBCL or CHL



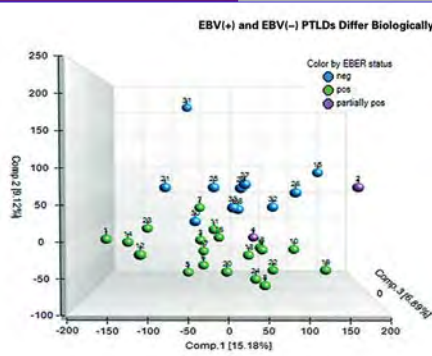
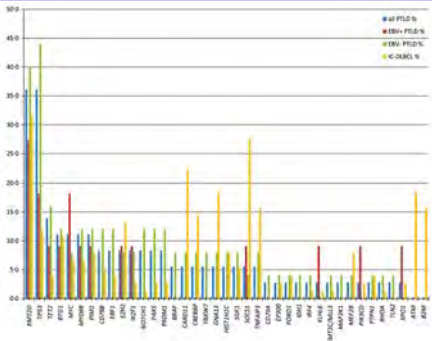
Oyama et al, Am J Surg Pathol 2003; Clin Cancer Res 2007; Gibson et al, Hum Pathol 2009; Hoeller et al, Hum Pathol 2010; Hofschneider et al, Mod Pathol 2011; Kato et al Cancer Sci 2014; Ok et al, Blood 2013; Clin Cancer Res 2014; Gebauer et al, Leuk Lym 2015; Nicolae et al, Blood 2015; de Jong et al AJCP 2017; Natkunam et al Blood 2018

23

Emerging Concepts: EBV Status

- Distinct differences in EBV+ vs EBV- LPDs
 - **EBV+ DLBCL**
 - Inflammatory and tolerogenic immune responses by GEP
 - Lower somatic mutational burden
 - Non-GC subtype with NF- κ B signaling constitutively activated by *LMP1* and *LMP2A*
 - Amplifications and copy gains of *9p24.1*
 - **EBV- DLBCL**
 - Higher mutational burden similar to immunocompetent pts
 - GCB subtype, *TP53* mutations, CNAs in *MYC* and *BCL6*
 - *BCL2-R* is absent (unlike immunocompetent patients)
- EBV-directed treatment strategies
 - Checkpoint blockade, inducing lytic cycle, anti-virals & vaccines

EBV(+) and EBV(-) PTLDs Differ Biologically

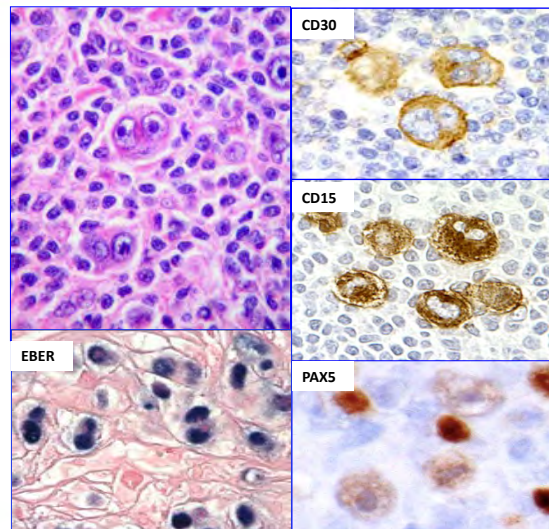
Niller et al. Cancer Lett 2011; Morscio J et al. Am J Transplant 2013
Ferreiro JF et al. Am J Transplant 2016; Menter et al. Br J Haematol 2017

24

EBV+ Classic Hodgkin Lymphoma



- EBV+ CHL occurs in immunocompetent or immunodeficient patients
- Most common in mixed cellularity subtype
- Type II EBV latency (LMP1+ EBNA1+ EBNA2-)
- **In IDD settings:**
 - Almost always EBV+
 - Must fulfill all criteria for CHL
 - Classic morphology
 - CD45- CD30+ CD15+ CD20- PAX5 dim phenotype
 - More likely to have B-cell antigens (CD20, CD79a)
 - If EBV+ is present in a range of cells from small to large, consider polymorphic LPD or EBV+MCU (esp. in mucosal or skin sites)
 - EBV+ CHL may mimic EBV+ DLBCL (consider esp. in extranodal or non-mediastinal sites)



25

IDD-Associated T- and NK-Cell LPD and Lymphoma



- Less common and less well-understood than B-cell spectrum
- Less likely to be EBV+ in IDD settings
- Borderline between indolent T-proliferations and T cell lymphoma not well defined (eg. $\gamma\delta$ T-cells, CD4/CD8 DN T-cells) – interpret with caution
- In EBV+ T-cell proliferations, clonality may not be indicative of malignancy
- T-cell lymphoma itself may cause immunodeficiency (e.g. AITL) and can be associated with secondary EBV+/- B or plasma cell proliferations

26

Inborn Errors of Immunity (IEI)



- Mass-forming or infiltrative proliferations of B- or more rarely T-cells that arise due to an underlying IEI

IEI Subtype	Characteristics & Manifestations	Examples
Predominantly antibody deficiencies (52% of IEI)	<ul style="list-style-type: none"> • Low Ig subsets, altered B-cell maturation and/or T-cell repertoire, signaling and mutations (P13KCD, PTEN, AID, BTK) • Infections • Predisposition to B hyperplasias and lymphomas (DLBCL>CHL>EMZL>TCL); CD8+ T-LPD 	CVID, APDS, Hyper-IgM syndrome, agammaglobulinemia
Combined immunodeficiencies (10% of IEI)	<ul style="list-style-type: none"> • DNA repair defects; radiation susceptibility (subset) • Developmental delay • Infections • Predisposition to lymphomas (DLBCL>BL>B/T-LL> CHL) 	Ataxia Telangiectasia, Nijmegen Breakage syndrome, SCID, Bloom syndrome, CHARGE, DiGeorge, Wiskott-Aldrich
Immune dysregulation	<ul style="list-style-type: none"> • Autoimmunity • Lymphoproliferations • Infections; severe EBV inf, defective EBV clearance, HLH • T-cell hyperactivation and defective T-cell apoptosis • Predisposition to lymphomas (HLH, EBV+ CHL, NLPHL, DLBCL) 	Familial HLH, ALPS, XLP, Chediak-Higashi, RALD

Tangye SG, Al-Herz W, Bousfiha A, et al. Human Inborn Errors of Immunity: 2019 Update on the Classification from the International Union of Immunological Societies Expert Committee. *J Clin Immunol.* 2020
Seidel MG et al. *J Allergy Clin Immunol Pract.* 2019; Riaz IB et al. *Front Immunol.* 2019

27

IEI-Associated LPDs and Lymphomas



A full spectrum of IDD-LPDs occur

B-cell proliferations

Hyperplasia, Polymorphic LPD, low grade BCL, DLBCL, CHL, Plasmablastic lymphoma

T and NK cell proliferations

Expansions of T-cell subsets, nodal hyperplasias, extranodal LPD, T-ALL

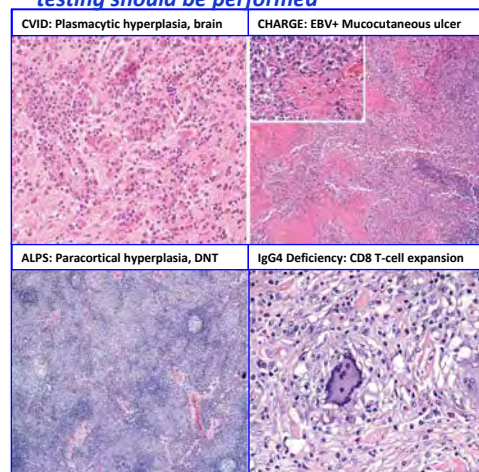
Histiocytic proliferations

Granulomatous lesions, HLH, Rosai-Dorfman disease

Specific associations in IEI settings

- T-PLL in AT and NBS patients
- NLPHL in ALPS patients
- CD8+ T-cell expansions in CVID patients

**If not already known, germline genetic testing should be performed*



Gratzinger et al. *AJCP* 2017

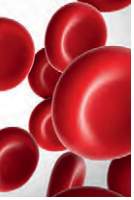
28

Diagnosis & Workup of IDD-LPDs	
Challenges and Pitfalls	Desired Approach
EBV+ LPDs arise in immunocompetent or immunodeficient patients	<ul style="list-style-type: none"> Recognize an underlying IDD to prevent over/under-diagnosis Correlate with clinical history and staging Initiate workup if immune status unknown; genetic testing for IEI
Testing for EBV	<ul style="list-style-type: none"> Necrosis Polymorphic lymphoid lesion Known or suspected immunodeficiency Clinical history: cytotoxic and immunomodulatory therapy
Hyperplasias & Polymorphic LPDs may be difficult to distinguish from other infectious and inflammatory infiltrates and show nonspecific histology and phenotype	<ul style="list-style-type: none"> Clinical context and involved site(s) Circumscription; if edges not visible, recommend larger biopsy Workup for infectious etiologies incl viruses; correlate with serology Be aware that large B-cells and HRS-like cells can be admixed
Molecular clonality is not always indicative of malignancy	<ul style="list-style-type: none"> Interpret results in the context of other clinicopathologic findings
Geographic distribution and genetic risk	<ul style="list-style-type: none"> Awareness of endemic regions, epidemiologic factors, genetic risk or prodromal conditions in some patient populations May require close clinical monitoring and/or re-biopsy and re-testing

29

Summary & Future Directions	
<ul style="list-style-type: none"> Standardization of nomenclature allows the inclusion of the entire spectrum of IDD-LPDs and lymphomas Consistent defining criteria for similar lesions in all IDD settings Recognizes typical causal associations and their contexts Multidisciplinary approach provides comprehensive clinical decision support Readily accommodates new advances in the field Acknowledges gaps in current knowledge to guide research and inform future classifications 	

30



Immunodeficiency-associated lymphoproliferative disorders: time for reappraisal?

Yasodha Natkunam,¹ Dita Gratzinger,¹ Amy Chadburn,² John R. Goodlad,³ John K. C. Chan,⁴ Jonathan Said,⁵ Elaine S. Jaffe,⁶ and Daphne de Jong⁷

¹Department of Pathology, Stanford University School of Medicine, Stanford, CA; ²Department of Pathology, Weill Medical College, Cornell University, New York, NY; ³National Health Service Greater Glasgow and Clyde, Glasgow, United Kingdom; ⁴Queen Elizabeth Hospital, Kowloon, Hong Kong; ⁵University of California Los Angeles Medical Center, Los Angeles, CA; ⁶National Cancer Institute, National Institutes of Health, Bethesda, MD; and ⁷VU University Medical Center, Amsterdam, The Netherlands

Immunodeficiency-associated lymphoproliferative disorders (IA-LPDs) are pathologically and clinically heterogeneous. In many instances, similar features are shared by a spectrum of IA-LPDs in clinically diverse settings. However, the World Health Organization (WHO) classifies IA-LPDs by their immunodeficiency setting largely according to the paradigm of post-transplant lymphoproliferative disorders but with inconsistent terminology and disease definitions. The field currently lacks standardization and would greatly benefit from thinking across immunodeficiency categories by adopting a common working vocabulary to better understand these disorders and guide clinical management. We propose a 3-part unifying nomenclature that includes the name of the lesion, associated

virus, and the specific immunodeficiency setting for all IA-LPDs. B-cell lymphoproliferative disorders (LPDs) are usually Epstein-Barr virus (EBV)⁺ and show a spectrum of lesions, including hyperplasias, polymorphic LPDs, aggressive lymphomas, and, rarely, indolent lymphomas. Human herpes virus 8–associated LPDs also include polyclonal and monoclonal proliferations. EBV⁻ B-cell LPDs and T- and NK-cell LPDs are rare and less well characterized. Recognition of any immunodeficiency is important because it impacts the choice of treatment options. There is an urgent need for reappraisal of IA-LPDs because a common framework will facilitate meaningful biological insights and pave the way for future work in the field. (*Blood*. 2018;132(18):1871-1878)

Introduction

Immunodeficiency-associated lymphoproliferative disorders (IA-LPDs) are a heterogeneous group of lesions with variable clinicopathologic features. The World Health Organization (WHO) classification recognizes 4 types of IA-LPDs: post-transplant lymphoproliferative disorders (PTLDs), lymphomas associated with HIV infection, lymphoproliferations associated with primary immune disorders, and other iatrogenic IA-LPDs.¹ In the WHO classification, these IA-LPDs are described in 4 separate chapters according to the underlying clinical risk factors. This categorization is largely based on clinical knowledge and specific therapeutic options used in each of those settings. This current approach ignores common oncogenic, biological, and pathological features among various immunodeficiency settings and instead emphasizes the distinctive features that are characteristic of each setting. Despite shared histology, immunophenotype, and genetic features, the WHO classification arbitrarily separates IA-LPDs and leads to the use of different terminology, and sometimes even different diagnostic criteria, for similar IA-LPDs occurring in various immunodeficiency settings. Novel types of IA-LPDs that have emerged in the face of newer therapeutic agents are not mentioned in the current classification, and

other less-recognized immunodeficiency settings, such as immune senescence, have not been included as causes of immunodeficiency.

Prompted by the need for reappraisal of the current approach to the diagnosis of IA-LPDs, the Society for Hematopathology and the European Association for Haematopathology conducted a workshop on immunodeficiency and dysregulation in October of 2015. In this perspective, we aim to provide a common framework for IA-LPDs that will allow a systematic approach for further study and support meaningful comparisons and interpretation of data, such that diagnostic criteria can be better defined. The adoption of a common framework with unified terminology that can be applied across clinical settings would be beneficial in deriving biological insights, predicting clinical behavior, and developing novel treatment strategies.

Proposed unifying framework for the classification of IA-LPDs

At the Society for Hematopathology and the European Association for Haematopathology workshop and in the corresponding proceedings,²⁻⁷ a shared working vocabulary was proposed based

Table 1. Proposed unifying nomenclature and examples of immunodeficiency-associated LPDs

3-Part unifying nomenclature		
Name of lesion	Viral status	Specific immunodeficiency setting
B-cell hyperplasia (eg, plasmacytic hyperplasia)	eg, EBV ^{+/−} , HHV8 ^{+/−}	eg, Posttransplant (solid organ), iatrogenic (methotrexate), immune senescence
Polymorphic B-cell lymphoproliferations (eg, mucocutaneous ulcer)		
Lymphoma (WHO terminology) (eg, diffuse large B-cell lymphoma, Anaplastic large cell lymphoma, ALK [−])		
Examples of diagnostic labels		
Proposed unifying nomenclature	WHO 2016 nomenclature	
Plasmacytic hyperplasia, EBV ⁺ , posttransplant (solid organ)	Plasmacytic hyperplasia, nondestructive posttransplant LPD	
Polymorphic B-LPD, EBV ⁺ , iatrogenic (methotrexate)	Polymorphic LPD resembling polymorphic posttransplant LPD	
Mucocutaneous ulcer, EBV ⁺ , primary immunodeficiency (CHARGE syndrome)	EBV ⁺ mucocutaneous ulcer	
Diffuse large B-cell lymphoma, EBV [−] , HIV infection	Diffuse large B-cell lymphoma	
Diffuse large B-cell lymphoma, T-cell/histiocyte-rich, EBV ⁺ , immune senescence	EBV ⁺ diffuse large B-cell lymphoma	
Primary effusion lymphoma, HHV8 ⁺ , EBV ⁺ , HIV infection	Primary effusion lymphoma	

on a 3-part unifying nomenclature for all IA-LPDs: (1) the name of the lesion or the closest approximation to the WHO terminology, (2) associated virus, such as Epstein-Barr virus (EBV) or Kaposi sarcoma-associated virus/human herpes virus 8 (HHV8), if any, and (3) the specific immunodeficiency background (Table 1). Standardization of the nomenclature provides a nonhierarchical approach to group diagnoses in which lymphoproliferative disorders (LPDs) with similar morphologic, immunophenotypic, and genetic features from different immunodeficiency backgrounds can be classified together. This approach does not necessarily assign causality to the immunodeficiency setting or to the associated virus but recognizes the clinical context in which the LPDs arise and prompts further consideration of appropriate risk and/or alternative clinical management as necessary. For the purposes of this review, we focused our comments primarily on EBV- and HHV8-associated LPDs.

Shared features of IA-LPDs in different settings and their clinical consequences

The morphologic range of LPDs arising in the background of immunodeficiency is best described in the posttransplant setting. PTLDs are typically EBV-associated B-cell proliferations, although T- and NK-cell proliferations, as well as EBV[−] IA-LPDs, are also recognized. As a prototype, EBV-associated B-cell IA-LPDs will be discussed in further detail because they exemplify a similar morphologic range in different immunodeficiency settings (Figure 1). This range includes B-cell hyperplasias, polymorphic B-LPDs, indolent B-cell lymphomas, aggressive B-cell lymphomas, and classic Hodgkin lymphoma-like proliferations. Therefore, a unified nomenclature is feasible, although the clinical consequences and specific treatment options for IA-LPDs may differ according to the specific immunodeficiency setting.

Among the various factors contributing to the pathogenesis of IA-LPDs, some may be shared, whereas others may be specific to the immunodeficiency setting (eg, genotoxicity of previous multiagent chemotherapy in iatrogenic immunodeficiency). A common framework and vocabulary will allow these shared and setting-specific determinants of IA-LPDs to be further studied and better understood.

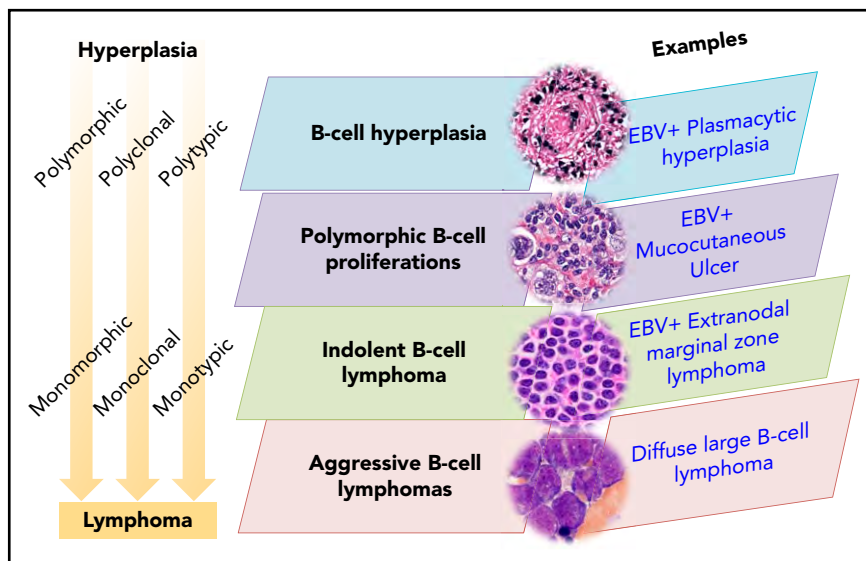
EBV-associated LPDs disorders in immunodeficiency settings

As proposed in the unifying nomenclature, the diagnostic criteria for EBV-associated IA-LPDs are applicable to all immunodeficiency settings and are summarized in Table 2. Similarities and differences among different immunodeficiency settings and their clinical implications are discussed below.

Immunodeficiency-associated B-cell hyperplasias

Immunodeficiency-associated B-cell hyperplasias have a nonspecific morphologic appearance that overlaps with other reactive conditions. Therefore, these nondestructive lesions require the presence of EBV for their association with immunodeficiency to be recognized. A relationship with immunodeficiency is debatable when EBV is negative, because no marker other than EBV indicates an association with immunodeficiency. EBV⁺ B-cell hyperplasias have been reported in PTLDs and iatrogenic LPDs and may also be observed in settings in which immunodeficiency is less obvious, such as in elderly patients.⁸ Hyperplasias that occur in the HIV setting are discussed later (HHV8-associated LPDs). Even when small B-cell clones or simple karyotypic abnormalities are present,⁹ most cases of immunodeficiency-associated B-cell hyperplasias regress spontaneously or with reduction of

Figure 1. Immunodeficiency-associated B-cell proliferations.



immunosuppression (in cases in which reduction of immunosuppression is feasible). Surgical excision is often sufficient for obstructive tonsillar masses. Because hyperplasias are only rarely associated with subsequent development of more aggressive IA-LPDs, watchful management is often sufficient. Clinical correlation remains essential to avoid under- and overdiagnosis.

Immunodeficiency-associated polymorphic B-cell LPDs

In contrast to B-cell hyperplasias in the immunodeficiency setting, polymorphic B-LPDs are destructive lesions that exhibit effacement of tissue architecture. In most instances they contain monoclonal B-cell receptor gene rearrangements. The morphology spans all stages of B-cell development, with a variable mixture of large B cells and Hodgkin-like cells. This range of morphologic features distinguishes polymorphic IA-B-LPDs from non-Hodgkin B-cell lymphomas (termed "monomorphic" in the WHO classification). This range of morphologic features should also prompt consideration of an underlying immunodeficiency if it is not already known. The clinical approach to polymorphic B-LPDs may vary according to the specific immunodeficiency setting. Most cases of polymorphic IA-B-LPDs in the solid organ transplant and iatrogenic clinical settings respond to reduction or withdrawal of immunosuppression, whereas the lesions in HIV⁺ individuals may respond to the initiation of highly active antiretroviral therapy. However, when the transplanted organ cannot be put at risk for rejection or the underlying cause of immunosuppression cannot be corrected (such as primary immunodeficiency and immune senescence), select nonresponsive or high-risk patients may require more aggressive treatment, such as immunotherapy, chemotherapy, or radiation therapy.

The recently recognized EBV⁺ mucocutaneous ulcer (MCU) is worthy of mention because it shares several features in common with polymorphic IA-B-LPDs.¹⁰ These are well-circumscribed often painful ulcerating lesions in mucosal or cutaneous sites that do not form a mass. EBV⁺ MCUs are composed of a polymorphous cell population often admixed with large B cells or Hodgkin-like cells, as seen in polymorphic PTLDs. Up to

50% of cases exhibit monoclonal B-cell receptor gene rearrangements.¹⁰ They can mimic Hodgkin or non-Hodgkin lymphomas histologically; however, their clinical presentation in mucosal sites or the skin should aid in making the correct diagnosis. Most EBV⁺ MCUs regress spontaneously or with reduction of immunosuppression where the latter option is possible. Rare cases may exhibit a relapsing and remitting course without further progression. In the posttransplant setting, the use of immunotherapy (rituximab) has proved effective for the clinical management of EBV⁺ MCUs.¹¹

Immunodeficiency-associated indolent B-cell lymphomas

Small B-cell lymphomas in immunodeficiency settings are likely frequently coincidental rather than causally related.¹ The presence of EBV is necessary for their association with immunodeficiency to be recognized. Immunodeficiency-associated small B-cell lymphomas are EBV⁺ plasmacytoid/plasmacytic proliferations, such as extranodal marginal zone lymphoma, lymphoplasmacytic lymphoma, and extraosseous plasmacytoma.¹² The morphologic overlap with polymorphic B-LPDs is extensive and may represent a true biological continuum.⁴ It is possible that some small B-cell lymphomas in the immunodeficiency setting would be optimally managed with treatment strategies used for polymorphic B-LPDs.

Immunodeficiency-associated aggressive B-cell lymphomas

Aggressive B-cell lymphomas in immunodeficiency settings are usually, although not always, EBV⁺ and can generally be named according to their closest counterparts in immunocompetent patients. These include entities classified as monomorphic PTLDs in the current WHO classification, including diffuse large B-cell lymphoma (DLBCL), high-grade B-cell lymphoma, not otherwise specified (NOS), Burkitt lymphoma, plasmablastic lymphoma, and classic Hodgkin lymphoma (CHL). EBV⁻ IA-B-LPDs also occur but can only be convincingly recognized in obvious immunodeficiency settings and are estimated to account for 20% to 40% of PTLDs.¹³ Although aggressive B-LPDs can be recognized because of their distinctive pathologic features, their association with an

Table 2. Immunodeficiency-associated EBV⁺ B-cell LPDs

<p>B-cell hyperplasias</p> <p>Nondestructive mass</p> <p>Three types: follicular, infectious mononucleosis–like, and plasmacytic</p> <p>Presence of EBV is required for the diagnosis, particularly in follicular and plasmacytic hyperplasias</p> <p>Infectious mononucleosis–like hyperplasia can mimic polymorphic lesions or classic Hodgkin lymphoma</p> <p>Small clones or simple karyotypic aberrancies may be detected</p> <p>Typically regress spontaneously or with reduction of immunosuppression; rare cases may progress to more aggressive lesions</p>
<p>Polymorphic B-LPDs</p> <p>Destructive mass</p> <p>Polymorphous infiltrate with all stages of B-cell maturation, usually with prominent plasma cell differentiation and abundant immunoblasts with or without Hodgkin-like cells</p> <p>EBV is usually positive but not required for the diagnosis</p> <p>Majority show clonal <i>IGH</i> rearrangements; simple karyotypic aberrancies may be detected</p> <p>May respond to reduction of immunosuppression or initiation of HAART in HIV patients, but some may require more aggressive treatment</p> <p>EBV⁺mucocutaneous ulcers are well-circumscribed lesions in mucosal or cutaneous sites that may morphologically mimic classic Hodgkin lymphoma</p>
<p>Indolent B-cell lymphomas</p> <p>Must meet criteria for corresponding lymphoma in immunocompetent hosts</p> <p>Presence of EBV is required for diagnosis</p> <p>Proliferations suggesting nodal/extranodal marginal zone lymphoma are the most frequent; cutaneous sites are frequently involved</p>
<p>Aggressive B-cell lymphomas</p> <p>Must meet criteria for corresponding lymphoma in immunocompetent hosts</p> <p>Lesions diagnosed as EBV⁺ DLBCL should contain EBV in the majority of cells</p> <p>Morphologic and immunophenotypic continuum between DLBCL with prominent T-cell/histiocyte-rich background and classic Hodgkin lymphoma may pose a diagnostic challenge</p> <p>Mycophenolate mofetil predisposes to central nervous system DLBCL, where calcineurin exerts a protective effect</p>

DLBCL, diffuse large B-cell lymphoma; HAART, highly active antiretroviral therapy.

underlying immunodeficiency may be missed when EBV is absent. Differences in EBV⁺ and EBV⁻ large B-cell lymphomas in the posttransplant setting have also been reported,¹⁴ although additional large-scale studies will be needed to validate these findings.

Similar aggressive B-cell lymphomas occur not just in the posttransplant setting but across all immunodeficiency settings. Some characteristics vary by immunodeficiency setting: for example, EBV⁺ Burkitt lymphoma in the setting of HIV typically has a plasmacytoid appearance. Nevertheless, the diagnostic features and aggressive clinical behavior are otherwise similar. Currently, in the posttransplant setting, these lymphomas would be grouped under monomorphic PTLDs and then subclassified accordingly. Our proposed nomenclature recognizes similar entities across the spectrum of IA-LPDs.

IA-B-LPDs are diseases in which the traditional distinction between polymorphic and monomorphic LPDs is ambiguous and nonreproducible.⁴ In immunodeficiency-associated large B-cell lymphomas in which there is a mixed background with increased T cells and histiocytes, classification as Hodgkin lymphoma vs non-Hodgkin lymphoma is often difficult and ambiguous. These lymphomas represent a histopathologic and immunophenotypic continuum between T-cell/histiocyte-rich large B-cell lymphoma, CHL, and EBV⁺ MCUs. It is clinically important to recognize the spectrum of proliferations with features of CHL in immunodeficiency settings, because they are likely to impact the choice of treatment strategies.

HHV8-associated LPDs

HHV8⁺ lesions have well-defined nomenclature and disease definitions and include multicentric Castleman disease (MCD); HHV8⁺ DLBCL, NOS; germinotropic LPDs; primary effusion lymphoma (PEL); and extracavitary PEL (Table 3).¹⁵ These typically occur in the setting of immunodeficiency, particularly HIV infection. The characteristic LPDs associated with HHV8 are described below, but it should be appreciated that there are

unusual cases within the spectrum of HHV8 and HHV8/EBV LPDs with overlapping features that do not fulfill criteria for the established entities.^{16,17} In situations in which an HHV8-related LPD is a consideration, immunostaining for HHV8-associated latent protein LANA1 (ORF73) readily highlights the nuclei of the infected cells.

Polyclonal HHV8⁺ B-cell lesions

Similar to the EBV-associated B-cell hyperplasias in immunodeficiency settings, a parallel can be drawn with HHV8⁺ lesions, such as HHV8⁺ MCDs and germinotropic LPDs. These typically occur in the setting of immunodeficiency, particularly HIV infection, with the exception of germinotropic LPDs, of which most cases are HIV⁻. They are usually polyclonal lymphoid proliferations that show minimal, if any, destruction of the underlying architecture, similar to the EBV⁺ nondestructive hyperplastic lesions described in the posttransplant setting.^{18,19} Treatment approaches are largely driven by the clinical setting, with some cases of HHV8 MCD requiring clinical intervention, such as antiretroviral therapy, rituximab, and/or interleukin-6/interleukin-6 receptor–blocking antibodies.²⁰

HHV8⁺ lymphomas

These lesions include HHV8⁺ DLBCLs, NOS, which are solely HHV8⁺, and PELs/extracavitary PELs, which are usually, but not always, HHV8⁺ and EBV⁺.²¹ HHV8⁺ DLBCL, NOS is very rare, usually arises in, and may represent progression of HHV8 MCD.^{15,18,19} PELs/extracavitary PELs are usually EBV⁺ and HHV8⁺ and may also arise in patients with a history of MCD.²² Although these lesions preferentially arise in HIV⁺ individuals, they can arise in other immunodeficiency settings, such as in elderly individuals from endemic regions and in transplant recipients.²³ Aggressive lymphomas with the highest association with EBV and HHV8 tend to exhibit plasmacytic differentiation.^{24,25} Therefore, although there is a wider spectrum of virally associated aggressive IA-LPDs, there is still a relative degree of restriction to lesions that are derived from terminally differentiated B cells.

Table 3. Immunodeficiency-associated HHV8⁺ LPDs

HHV8⁺MCD MCD is classified according to the presence or absence of HHV8 Proliferation of lymphocytes, histiocytes, and plasma cells related to cytokine excess, particularly viral interleukin-6 Plasmablastic aggregates (previously called “microlymphomas”) express immunoglobulin M and λ light chains but show polyclonal or oligoclonal patterns of IG rearrangements
HHV8⁺germinotropic LPD Arises predominantly in HIV ⁻ immunocompetent patients EBV ⁺ May mimic HHV8 ⁺ DLBCL, NOS No clonal IGH rearrangements in most cases No well-defined polymorphic lesions No well-defined indolent lymphomas
HHV8⁺ DLBCL, NOS Usually, but not always, associated with MCD Rarely evolve from progression of MCD with plasmablastic aggregates to sheets of monoclonal plasmablasts causing tissue destruction Express markers of terminal B-cell differentiation; EBV is negative
PEL and extracavitary PEL Usually, but not always, associated with HIV infection; EBV is positive in 75% of cases, particularly those associated with HIV Lack pan B-cell markers but express IG rearrangements, indicating a B-cell genotype Express markers of terminal B-cell differentiation Not all PELs present with effusions; some may present as extracavitary masses

T-cell and NK-cell lymphomas associated with immunodeficiency

EBV is a major factor in most IA-LPDs of B-cell derivation; however, T- and NK-cell lymphomas are less frequently seen in the setting of immunodeficiency and are less often associated with EBV. Although late-occurring T-cell lymphomas in the posttransplant setting have been described,^{13,26-35} IA-T-LPDs do not readily fit into an orderly framework as described for IA-B-LPDs. Thus, this proposed paradigm may provide a pathway for further study of these lesions.

Only a few specific examples of associations of immunodeficiency and T-cell lymphomas are known. In recent years, an increased risk for hepatosplenic T-cell lymphoma, usually of $\gamma\delta$ subtype, has been recognized, primarily in young patients with Crohn’s disease receiving immunosuppressive therapy with thiopurines and anti-tumor necrosis factor- α agents, mainly infliximab.^{36,37} Notably, a lesser risk is seen with other immune disorders, such as rheumatoid arthritis, treated with similar compounds. The data suggest that the risk for hepatosplenic T-cell lymphoma may be related to the synergistic effects of chronic immune stimulation and immunosuppression related to Crohn’s disease. Specific associations of T-cell lymphoproliferative disease with primary immune deficiencies are seen but are also rare. The best-documented association is a risk for T-cell leukemia, primarily T-cell prolymphocytic leukemia, in the setting of ataxia telangiectasia.³⁸ There is a significant lack of data regarding T- and NK-cell proliferations, and progress in the field will require additional investigations across all immunodeficiency settings.

When to suspect underlying immunodeficiency

The importance of recognizing underlying immunodeficiency is clear when one considers the difference in clinical strategy between systemic chemotherapy and a graded approach,

beginning with reduction of immunosuppression where possible. Communication is paramount, between the patient and the clinician to elicit the corresponding history, as well as between the clinician and the pathologist to ensure proper ancillary testing and interpretation. Relevant history includes type of transplant (solid organ, allogeneic, autologous hematopoietic stem cell transplant) and type of immunosuppressive regimen; rheumatologic and autoimmune disease; careful drug history, including prior chemotherapy; personal or family history suspicious for a primary immunodeficiency; and personal history of LPDs, which may provide a clue to underlying immunodeficiency.

Patients with rheumatologic or autoimmune disease may have increased risk for EBV⁺ lymphoproliferations due to the combined effect of the rheumatologic/autoimmune disease and immunosuppressive agents, such as methotrexate. In addition to well-known immunosuppressive medications, newer agents may have novel pleiotropic immune modulatory effects. For example, dasatinib, a tyrosine kinase inhibitor used in the treatment of chronic myeloid leukemia and other malignancies, is sometimes associated with clonal NK- and T-cell large granular lymphocyte proliferations,³⁹ as well as lymphadenopathy associated with characteristic atypical reactive follicular hyperplasia.⁴⁰ With increasing numbers of novel agents entering clinical practice, care must be taken not to overdiagnose malignancy in the face of lymphoproliferations that may be benign and self-resolving. Long-term effects of other profound insults to the immune system, such as history of chemotherapy, are still poorly understood, but they may also predispose patients to potentially self-resolving EBV-associated B-cell lymphoproliferations similar to those in other iatrogenic immunodeficiency settings.^{41,42}

Manifestations of primary immunodeficiency vary markedly and are beyond the scope of this perspective; in addition to susceptibility to infection, there may be immune dysregulation, including autoimmune phenomena, and predilection to hemophagocytic lymphocytosis.⁴³ Among patients with common variable immunodeficiency, those with autoimmune cytopenias are at increased risk for LPDs.⁴⁴ The full range of EBV⁺ B-cell lymphoproliferations seen in the

posttransplant setting have been reported in patients with primary immunodeficiency.⁷ Benign expansions of T-cell subsets, such as cytotoxic T cells in common variable immunodeficiency and double-negative T cells in autoimmune lymphoproliferative syndrome, are a manifestation of the underlying immunodeficiency and must not be mistaken for overt T-cell lymphoma.^{45,46}

Practical aspects regarding the diagnosis of IA-LPDs

Given the clinical and histopathologic heterogeneity of IA-LPDs, a single biopsy, particularly a needle core, may not be representative. Excisional biopsy is preferred for diagnosis, and for mucosal or cutaneous lesions, a deep biopsy is recommended so that the characteristic architectural features of EBV⁺ MCUs can be appreciated. Flow immunophenotyping, if performed, may be helpful in identifying a clonal proliferation. The need for fresh tissue for flow immunophenotyping should be communicated to the surgeon so that the specimen can be divided between formalin and a suitable media, such as RPMI 1640. Molecular clonality studies may be performed on formalin-fixed paraffin-embedded tissue if indicated; however, the presence of clonal *IGH* or *TCR* gene rearrangements must be interpreted with caution in IA-LPDs because they are not synonymous with malignancy. However, investigations for genetic alterations are helpful in better characterizing these lesions.

A pathologic diagnosis suggestive of immunodeficiency provides a second opportunity to identify a potentially immunodeficiency-associated process when this is not immediately evident from the provided clinical history. In those instances, clinicians should be alerted to perform serum viral load studies by EBV DNA polymerase chain reaction to find specific support for EBV reactivation. As is evident from the discussion above, certain lesions, such as EBV⁺ MCUs or EBV⁺ polymorphic B-LPDs, are usually an indication of defective immune surveillance for EBV and likely underlying immunodeficiency of varied etiology.

A comprehensive biological framework for IA-LPDs

The genesis of IA-LPDs is multifactorial and may include chronic antigenic stimulation, overproduction of cytokines, altered immune checkpoints, and increased propensity to DNA damage. At least in some clinical scenarios, there is evidence that shared pathogenetic mechanisms underlie IA-LPDs. In many instances, EBV and HHV8 are important drivers, irrespective of the immunodeficiency setting. The significance of immunosuppression to lymphomagenesis is even less well understood in cases in which the virus is lacking. HIV is known to contribute to lymphomagenesis due to its immunosuppressive effect, but a direct role in lymphomagenesis has also been described.⁴⁷⁻⁴⁹

Recent investigations show that *9p24.1* copy number alterations and upregulation of PD-L1 are common in EBV⁺ and EBV⁻ IA-LPDs arising in diverse immunodeficiency states, including PTLDs, HIV, iatrogenic immunodeficiency, and immune senescence.^{4,50-53} Interestingly, this finding suggests a possible common and specific role for immune checkpoint blockade as an effective treatment strategy for IA-LPDs. These findings underscore the rationale for an overarching framework that includes all IA-LPDs.

It should be appreciated that the nature of the underlying immunodeficiency and the clinical setting will impact the character

of the IA-LPD and its clinical management. Moreover, some IA-LPDs are relatively unique to certain clinical settings. For example, mycophenolate mofetil has been shown to specifically predispose to the development of primary central nervous system DLBCL, in which calcineurin exerts a protective effect.⁵⁴ Awareness of these specific associations is necessary to elicit the appropriate history and to guide clinical management.

Conclusions

In the 50 years since the first description of PTLDs,⁵⁵ recognition of IA-LPDs has expanded to include a spectrum of lesions occurring in diverse immunodeficiency settings. Some categories of lesions and some immunodeficiency settings are better understood than others, and newer lesions and contexts continue to emerge. However, this expanded spectrum of IA-LPDs has come at the expense of nonuniform cumbersome terminology and inconsistently applied disease definitions that have hampered progress in the field. In this perspective, we have outlined a conceptual framework to unify and standardize nomenclature and disease definitions across categories of underlying immunodeficiency. Lymphoma classifications have previously used the strategy of adopting unifying terminology such that problematic lesions that span the boundary between ≥ 2 distinct entities can be better studied. Highly heterogeneous groups have benefitted from such an approach, which has provided improved clarity to bring back to the clinic. The unifying nomenclature, by providing a common framework, is expected to guide future iterations of terminology, disease definitions, and classification for all IA-LPDs. This approach, in turn, may guide the choice of optimal therapies for patients while still recognizing the specific clinical context and treatment requirements of each immunodeficiency setting.

Acknowledgments

The authors thank their hematology and oncology colleagues Sven DeVos (University of California Los Angeles), Wyndham Wilson (National Cancer Institute), Ranjana Advani (Stanford University School of Medicine), Joseph Sparano (Albert Einstein College of Medicine), and Pam McKay (University of Glasgow) for their excellent feedback and discussion regarding the clinical usefulness of our proposal.

Authorship

Contribution: All authors actively participated in writing this article, including writing parts of the original text, contributing to discussions, editing drafts, and providing input for tables and figures.

Conflict-of-interest disclosure: The authors declare no competing financial interests.

ORCID profiles: Y.N., 0000-0002-9816-1018; D.G., 0000-0002-9182-8123; D.d.J., 0000-0002-9725-4060.

Correspondence: Daphne de Jong, VU University Medical Center, Department of Pathology, De Boelelaan 1117, 1081HV Amsterdam, The Netherlands; e-mail: daphne.dejong@vumc.nl; and Yasodha Natkunam, Stanford University, School of Medicine, 300 Pasteur Dr, Stanford, CA 94305; e-mail: yaso@stanford.edu.

Footnote

Submitted 5 April 2018; accepted 27 July 2018. Prepublished online as *Blood* First Edition paper, 6 August 2018; DOI 10.1182/blood-2018-04-842559.

REFERENCES

- Swerdlow SH, Campo E, Harris NL, et al, eds. WHO Classification of Tumours of Haematopoietic and Lymphoid Tissues. Revised 4th ed. Lyon, France: International Agency for Research on Cancer; 2017.
- Natkunam Y, Gratzinger D, de Jong D, et al. Immunodeficiency and dysregulation: report of the 2015 Workshop of the Society for Hematopathology/European Association for Haematopathology. *Am J Clin Pathol.* 2017;147(2):124-128.
- Natkunam Y, Goodlad JR, Chadburn A, et al. EBV-positive B-cell proliferations of varied malignant potential: 2015 SH/EAHP Workshop Report-Part 1. *Am J Clin Pathol.* 2017;147(2):129-152.
- de Jong D, Roemer MGM, Chan JKC, et al. B-cell and classical Hodgkin lymphomas associated with immunodeficiency: 2015 SH/EAHP Workshop Report-Part 2. *Am J Clin Pathol.* 2017;147(2):153-170.
- Chadburn A, Said J, Gratzinger D, et al. HHV8/KSHV-positive lymphoproliferative disorders and the spectrum of plasmablastic and plasma cell neoplasms: 2015 SH/EAHP Workshop Report-Part 3. *Am J Clin Pathol.* 2017;147(2):171-187.
- Gratzinger D, de Jong D, Jaffe ES, et al. T- and NK-cell lymphomas and systemic lymphoproliferative disorders and the immunodeficiency setting: 2015 SH/EAHP Workshop Report-Part 4. *Am J Clin Pathol.* 2017;147(2):188-203.
- Gratzinger D, Jaffe ES, Chadburn A, et al. Primary/congenital immunodeficiency: 2015 SH/EAHP Workshop Report-Part 5. *Am J Clin Pathol.* 2017;147(2):204-216.
- Dojcinov SD, Venkataraman G, Pittaluga S, et al. Age-related EBV-associated lymphoproliferative disorders in the Western population: a spectrum of reactive lymphoid hyperplasia and lymphoma. *Blood.* 2011;117(18):4726-4735.
- Vakiani E, Basso K, Klein U, et al. Genetic and phenotypic analysis of B-cell post-transplant lymphoproliferative disorders provides insights into disease biology. *Hematol Oncol.* 2008;26(4):199-211.
- Dojcinov SD, Venkataraman G, Raffeld M, Pittaluga S, Jaffe ES. EBV positive mucocutaneous ulcer—a study of 26 cases associated with various sources of immunosuppression. *Am J Surg Pathol.* 2010;34(3):405-417.
- Hart M, Thakral B, Yohe S, et al. EBV-positive mucocutaneous ulcer in organ transplant recipients: a localized indolent posttransplant lymphoproliferative disorder. *Am J Surg Pathol.* 2014;38(11):1522-1529.
- Gibson SE, Swerdlow SH, Craig FE, et al. EBV-positive extranodal marginal zone lymphoma of mucosa-associated lymphoid tissue in the posttransplant setting: a distinct type of posttransplant lymphoproliferative disorder? *Am J Surg Pathol.* 2011;35(6):807-815.
- Swerdlow SH, Webber SA, Chadburn A, Ferry JA. Post-transplant lymphoproliferative disorders. In: Swerdlow SH, Campo E, Harris NL, et al. WHO Classification of Tumours of Haematopoietic and Lymphoid Tissues. Revised 4th ed. Lyon, France: International Agency for Research on Cancer; 2017: 453-462.
- Ferreiro JF, Morscio J, Dierickx D, et al. EBV-positive and EBV-negative posttransplant diffuse large B cell lymphomas have distinct genomic and transcriptomic features. *Am J Transplant.* 2016;16(2):414-425.
- Said J, Isaacson PG, Campo E, Harris NL. HHV8-associated lymphoproliferative disorders. In: Swerdlow SH, Campo E, Harris NL, et al, eds. WHO Classification of Tumours of Haematopoietic and Lymphoid Tissues. Revised 4th ed. Lyon, France: International Agency for Research on Cancer; 2017: 325-329.
- Gonzalez-Farre B, Martinez D, Lopez-Guerra M, et al. HHV8-related lymphoid proliferations: a broad spectrum of lesions from reactive lymphoid hyperplasia to overt lymphoma. *Mod Pathol.* 2017;30(5):745-760.
- Wang W, Kanagal-Shamanna R, Medeiros LJ. Lymphoproliferative disorders with concurrent HHV8 and EBV infection: beyond primary effusion lymphoma and germinotropic lymphoproliferative disorder. *Histopathology.* 2018;72(5):855-861.
- Du MQ, Liu H, Diss TC, et al; Du MQ1. Kaposi sarcoma-associated herpesvirus infects monotypic (IgM lambda) but polyclonal naive B cells in Castleman disease and associated lymphoproliferative disorders. *Blood.* 2001; 97(7):2130-2136.
- Bhavsar T, Lee JC, Perner Y, et al. KSHV-associated and EBV-associated germinotropic lymphoproliferative disorder: new findings and review of the literature. *Am J Surg Pathol.* 2017;41(6):795-800.
- Polizzotto MN, Uldrick TS, Wyvill KM, et al. Clinical features and outcomes of patients with symptomatic kaposi sarcoma herpesvirus (KSHV)-associated inflammation: prospective characterization of KSHV inflammatory cytokine syndrome (KICS). *Clin Infect Dis.* 2016; 62(6):730-738.
- Chadburn A, Hyjek E, Mathew S, Cesarman E, Said J, Knowles DM. KSHV-positive solid lymphomas represent an extra-cavitary variant of primary effusion lymphoma. *Am J Surg Pathol.* 2004;28(11):1401-1416.
- Oksenhendler E, Boulanger E, Galicier L, et al. High incidence of Kaposi sarcoma-associated herpesvirus-related non-Hodgkin lymphoma in patients with HIV infection and multicentric Castleman disease. *Blood.* 2002;99(7): 2331-2336.
- Teruya-Feldstein J, Zauber P, Setsuda JE, et al. Expression of human herpesvirus-8 oncogene and cytokine homologues in an HIV-seronegative patient with multicentric Castleman's disease and primary effusion lymphoma. *Lab Invest.* 1998;78(12): 1637-1642.
- Morscio J, Dierickx D, Nijs J, et al. Clinicopathologic comparison of plasmablastic lymphoma in HIV-positive, immunocompetent, and posttransplant patients: single-center series of 25 cases and meta-analysis of 277 reported cases. *Am J Surg Pathol.* 2014;38(7):875-886.
- Campo E, Stein H, Harris NL. Plasmablastic lymphoma In: Swerdlow SH, Campo E, Harris NL, et al, eds. WHO Classification of Tumours of Haematopoietic and Lymphoid Tissues. Lyon, France: International Agency for Research on Cancer; 2017: 321-322.
- Yang F, Li Y, Braylan R, Hunger SP, Yang LJ. Pediatric T-cell post-transplant lymphoproliferative disorder after solid organ transplantation. *Pediatr Blood Cancer.* 2008;50(2): 415-418.
- Attygalle AD, Cabeçadas J, Gaulard P, et al. Peripheral T-cell and NK-cell lymphomas and their mimics; taking a step forward - report on the lymphoma workshop of the XVth Meeting of the European Association for Haematopathology and the Society for Hematopathology. *Histopathology.* 2014;64(2):171-199.
- Haldas J, Wang W, Lazarchick J. Post-transplant lymphoproliferative disorders: T-cell lymphoma following cardiac transplant. *Leuk Lymphoma.* 2002;43(2):447-450.
- Margolske E, Jobanputra V, Jain P, et al. Genetic landscape of T- and NK-cell post-transplant lymphoproliferative disorders. *Oncotarget.* 2016;7(25):37636-37648.
- Kumar S, Kumar D, Kingma DW, Jaffe ES. Epstein-Barr virus-associated T-cell lymphoma in a renal transplant patient. *Am J Surg Pathol.* 1993;17(10):1046-1053.
- Dalal P, Bichu P, Dhawan V, et al. Post-transplant lymphoproliferative disorder—a case of late-onset T-cell lymphoma after failed renal transplant. *Adv Perit Dial.* 2012;28:94-96.
- Matsumura M, Mizuno Y, Okamoto M, et al. Long-term complete remission of multiple extranodal natural killer/T-cell-type post-transplant lymphoproliferative disorder after surgical resection: a case report. *Transplant Proc.* 2014;46(7):2373-2376.
- Omori N, Narai H, Tanaka T, et al. Epstein-Barr virus-associated T/NK cell-type central nervous system lymphoma which manifested as a post-transplantation lymphoproliferative disorder in a renal transplant recipient. *J Neurooncol.* 2008;87(2):189-191.
- Rajakariar R, Bhattacharyya M, Norton A, et al. Post transplant T-cell lymphoma: a case series of four patients from a single unit and review of the literature. *Am J Transplant.* 2004;4(9): 1534-1538.
- Tsao L, Draoua HY, Mansukhani M, Bhagat G, Alobeid B. EBV-associated, extranodal NK-cell lymphoma, nasal type of the breast, after heart transplantation. *Mod Pathol.* 2004;17(1): 125-130.
- Kotlyar DS, Osterman MT, Diamond RH, et al. A systematic review of factors that contribute to hepatosplenic T-cell lymphoma in patients with inflammatory bowel disease. *Clin Gastroenterol Hepatol.* 2011;9(1):36-41.e1.
- Parakkal D, Sifuentes H, Semer R, Ehrenpreis ED. Hepatosplenic T-cell lymphoma in patients receiving TNF- α inhibitor therapy: expanding the groups at risk. *Eur J Gastroenterol Hepatol.* 2011;23(12):1150-1156.
- Suarez F, Mahlaoui N, Canioni D, et al. Incidence, presentation, and prognosis of malignancies in ataxia-telangiectasia: a report from the French National Registry of Primary Immune Deficiencies. *J Clin Oncol.* 2015; 33(2):202-208.
- Mustjoki S, Ekblom M, Arstila TP, et al. Clonal expansion of T/NK-cells during tyrosine kinase

- inhibitor dasatinib therapy. *Leukemia*. 2009; 23(8):1398-1405.
40. Ozawa MG, Ewalt MD, Gratzinger D. Dasatinib-related follicular hyperplasia: an underrecognized entity with characteristic morphology. *Am J Surg Pathol*. 2015;39(10):1363-1369.
41. Pina-Oviedo S, Miranda RN, Medeiros LJ. Cancer therapy-associated lymphoproliferative disorders: an under-recognized type of immunodeficiency-associated lymphoproliferative disorder. *Am J Surg Pathol*. 2018; 42(1):116-129.
42. Daroontum T, Kohno K, Eladl AE, et al. Comparison of Epstein-Barr virus-positive mucocutaneous ulcer associated with treated lymphoma or methotrexate in Japan. *Histopathology*. 2018;72(7):1115-1127.
43. Bousfiha A, Jeddane L, Picard C, et al. The 2017 IUIS Phenotypic Classification for Primary Immunodeficiencies. *J Clin Immunol*. 2018; 38(1):129-143.
44. Feuille EJ, Anooshiravani N, Sullivan KE, Fuleihan RL, Cunningham-Rundles C. Autoimmune cytopenias and associated conditions in CVID: a report from the USIDNET Registry. *J Clin Immunol*. 2018;38(1):28-34.
45. Wong GK, Huissoon AP. T-cell abnormalities in common variable immunodeficiency: the hidden defect. *J Clin Pathol*. 2016;69(8): 672-676.
46. Xie Y, Pittaluga S, Price S, et al. Bone marrow findings in autoimmune lymphoproliferative syndrome with germline FAS mutation. *Haematologica*. 2017;102(2):364-372.
47. Martorelli D, Muraro E, Mastorci K, et al. A natural HIV p17 protein variant up-regulates the LMP-1 EBV oncoprotein and promotes the growth of EBV-infected B-lymphocytes: implications for EBV-driven lymphomagenesis in the HIV setting. *Int J Cancer*. 2015;137(6): 1374-1385.
48. Dolcetti R, Giagulli C, He W, et al. Role of HIV-1 matrix protein p17 variants in lymphoma pathogenesis. *Proc Natl Acad Sci USA*. 2015; 112(46):14331-14336.
49. Dolcetti R, Gloghini A, Caruso A, Carbone A. A lymphomagenic role for HIV beyond immune suppression? *Blood*. 2016;127(11): 1403-1409.
50. Chen BJ, Chapuy B, Ouyang J, et al. PD-L1 expression is characteristic of a subset of aggressive B-cell lymphomas and virus-associated malignancies. *Clin Cancer Res*. 2013;19(13):3462-3473.
51. Yoon H, Park S, Ju H, et al. Integrated copy number and gene expression profiling analysis of Epstein-Barr virus-positive diffuse large B-cell lymphoma. *Genes Chromosomes Cancer*. 2015;54(6):383-396.
52. Nicolae A, Pittaluga S, Abdullah S, et al. EBV-positive large B-cell lymphomas in young patients: a nodal lymphoma with evidence for a tolerogenic immune environment. *Blood*. 2015;126(7):863-872.
53. Kwon D, Kim S, Kim PJ, et al. Clinicopathological analysis of programmed cell death 1 and programmed cell death ligand 1 expression in the tumour microenvironments of diffuse large B cell lymphomas. *Histopathology*. 2016;68(7):1079-1089.
54. Crane GM, Powell H, Kostadinov R, et al. Primary CNS lymphoproliferative disease, mycophenolate and calcineurin inhibitor usage. *Oncotarget*. 2015;6(32): 33849-33866.
55. Doak PB, Montgomerie JZ, North JD, Smith F. Reticulum cell sarcoma after renal homo-transplantation and azathioprine and prednisone therapy. *BMJ*. 1968;4(5633):746-748.