



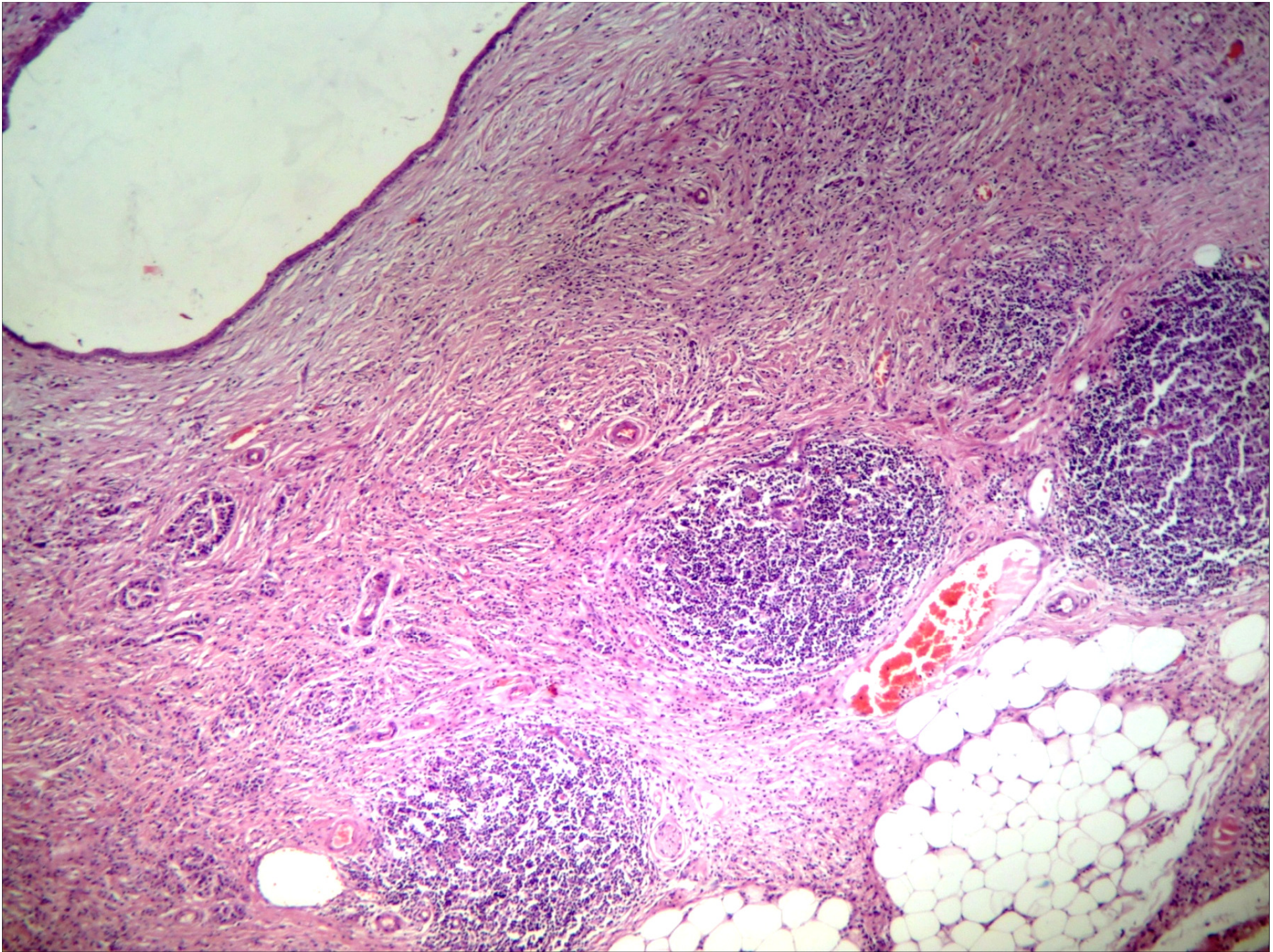
Sociedade Brasileira de Patologia

# Caso do mês – Agosto/2016 - 2

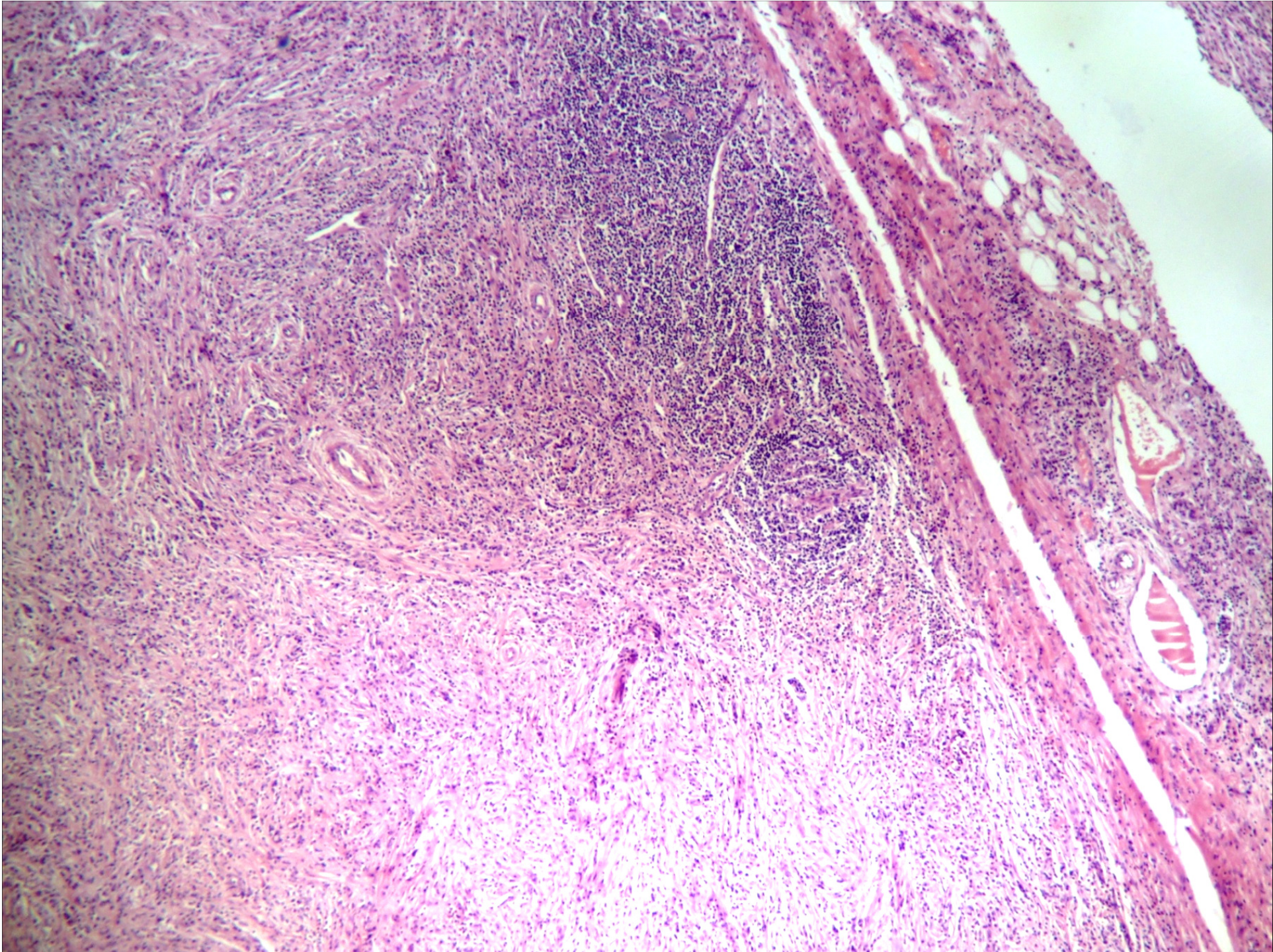
Carlos Camilo Neto

- . CCR, feminino, 63 anos
- . Massa em cabeça de pâncreas a/e e icterícia obstrutiva
- . Material enviado: GDP e vesícula biliar

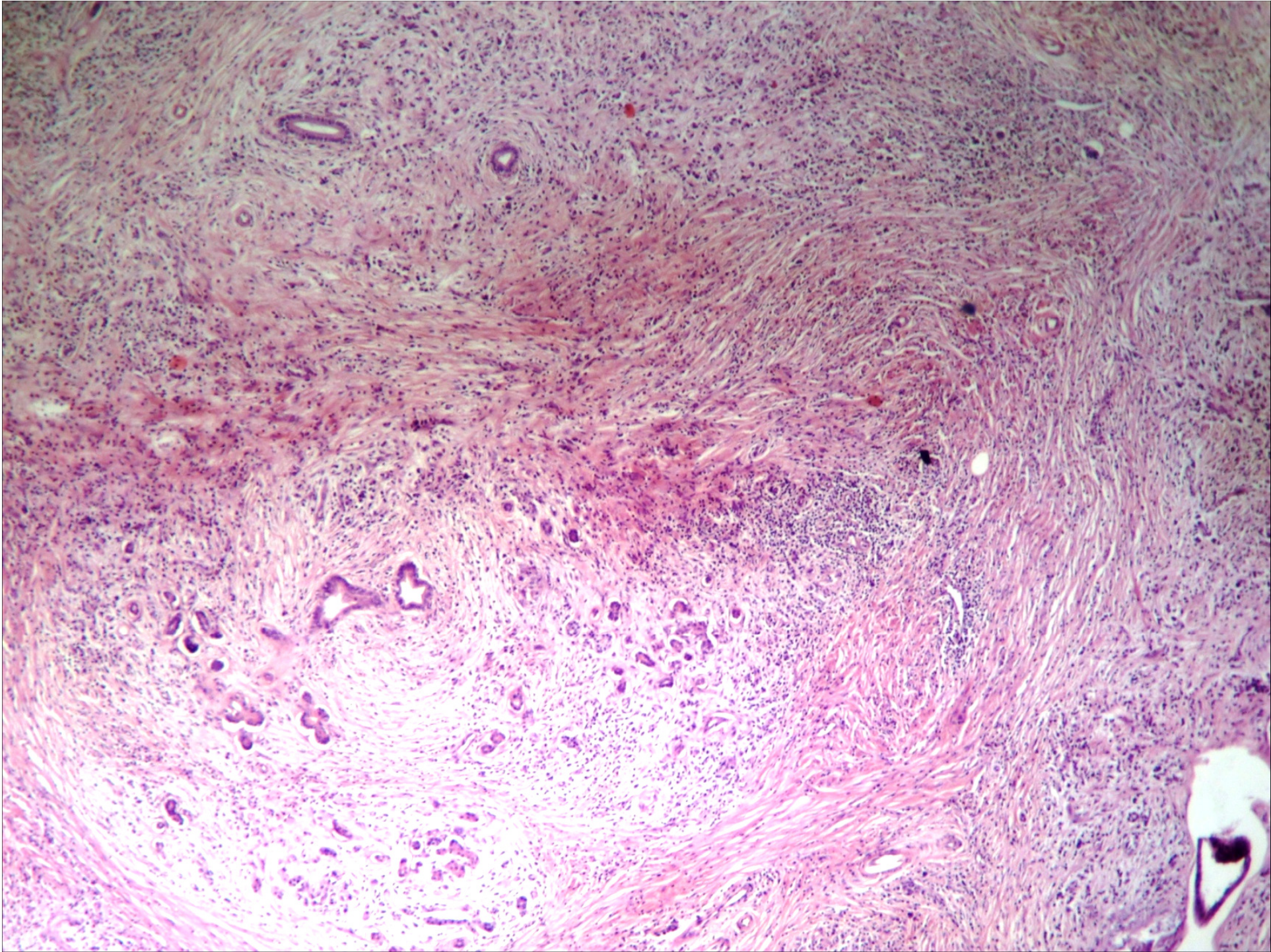




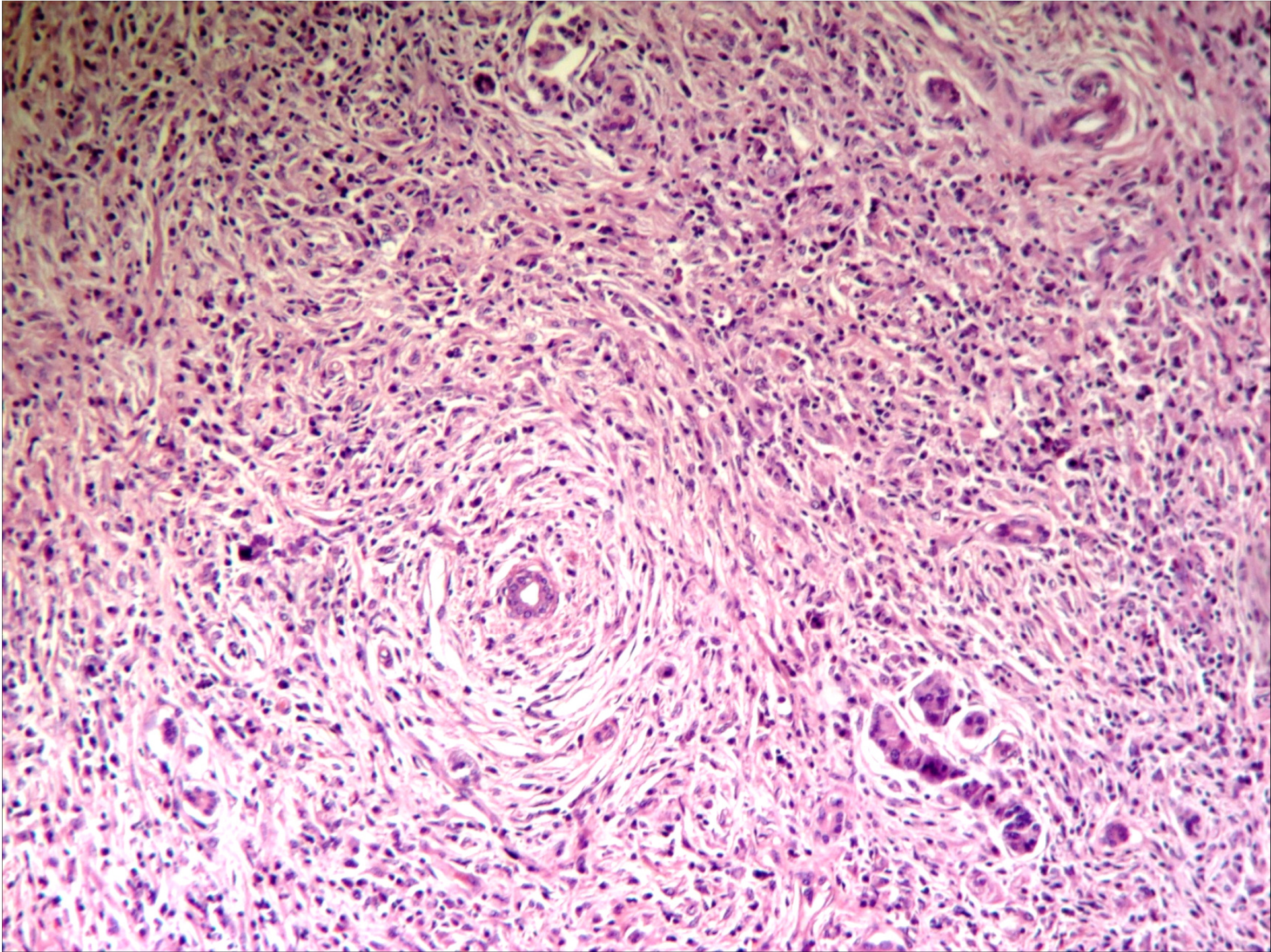




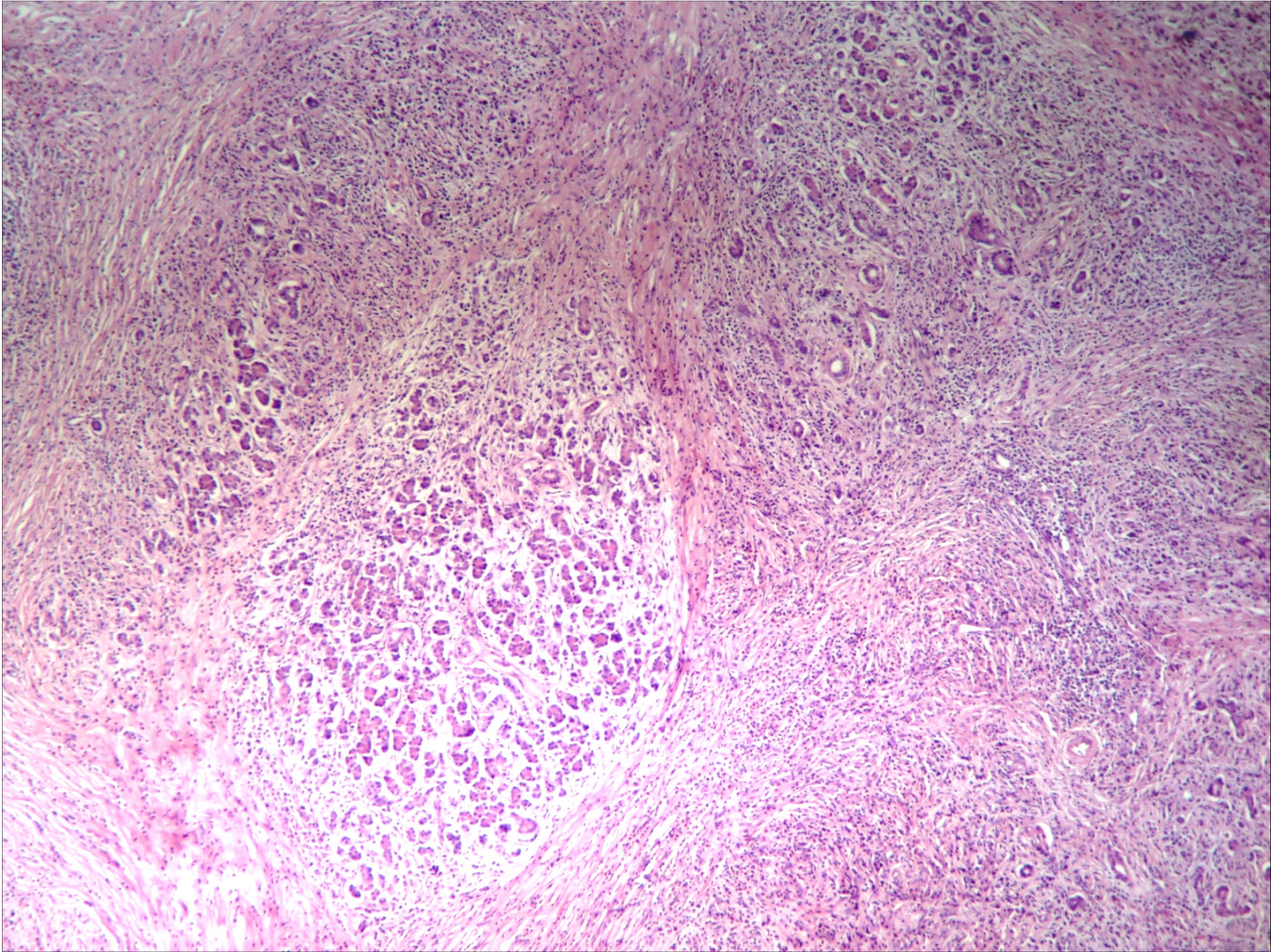




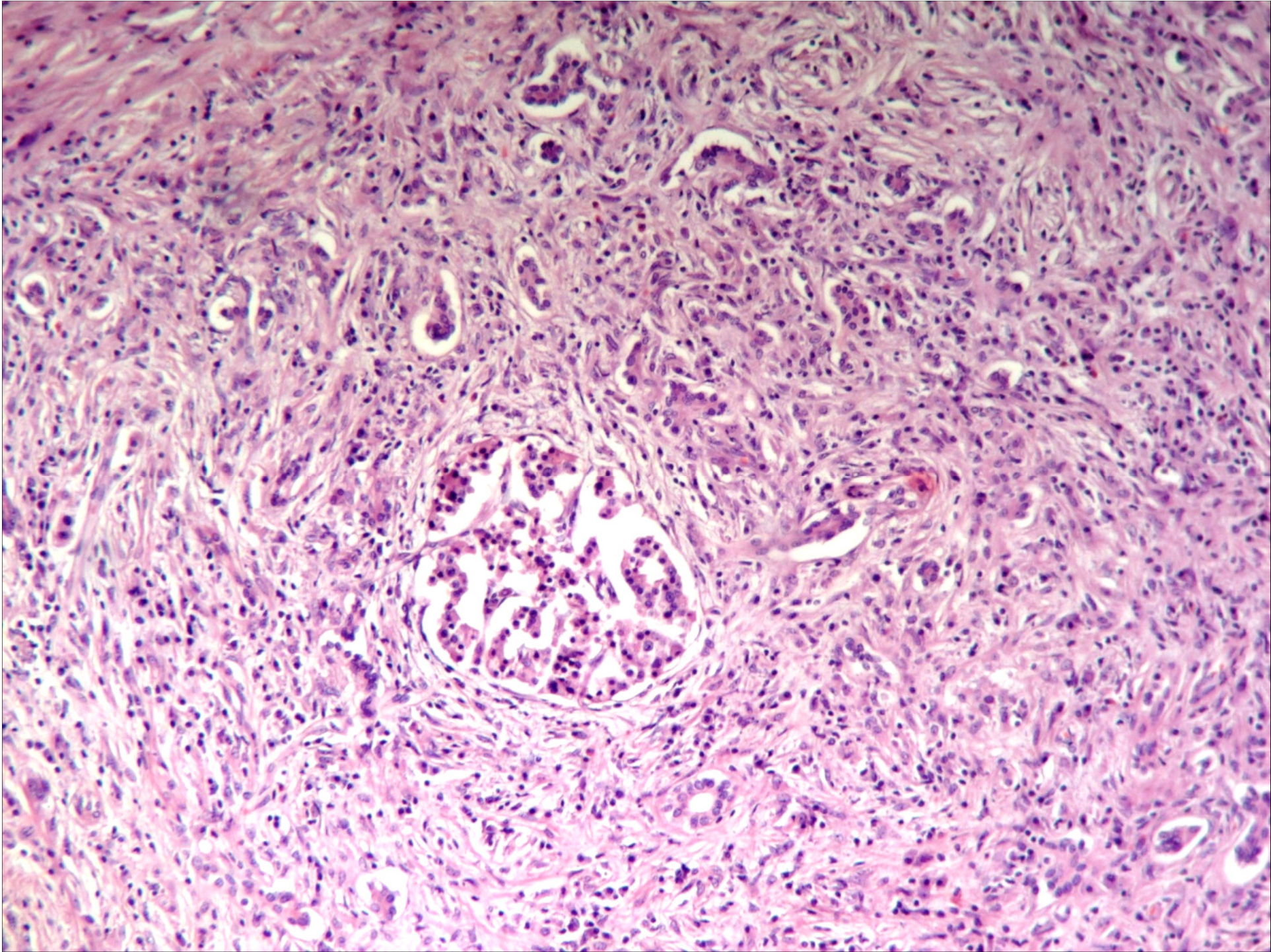




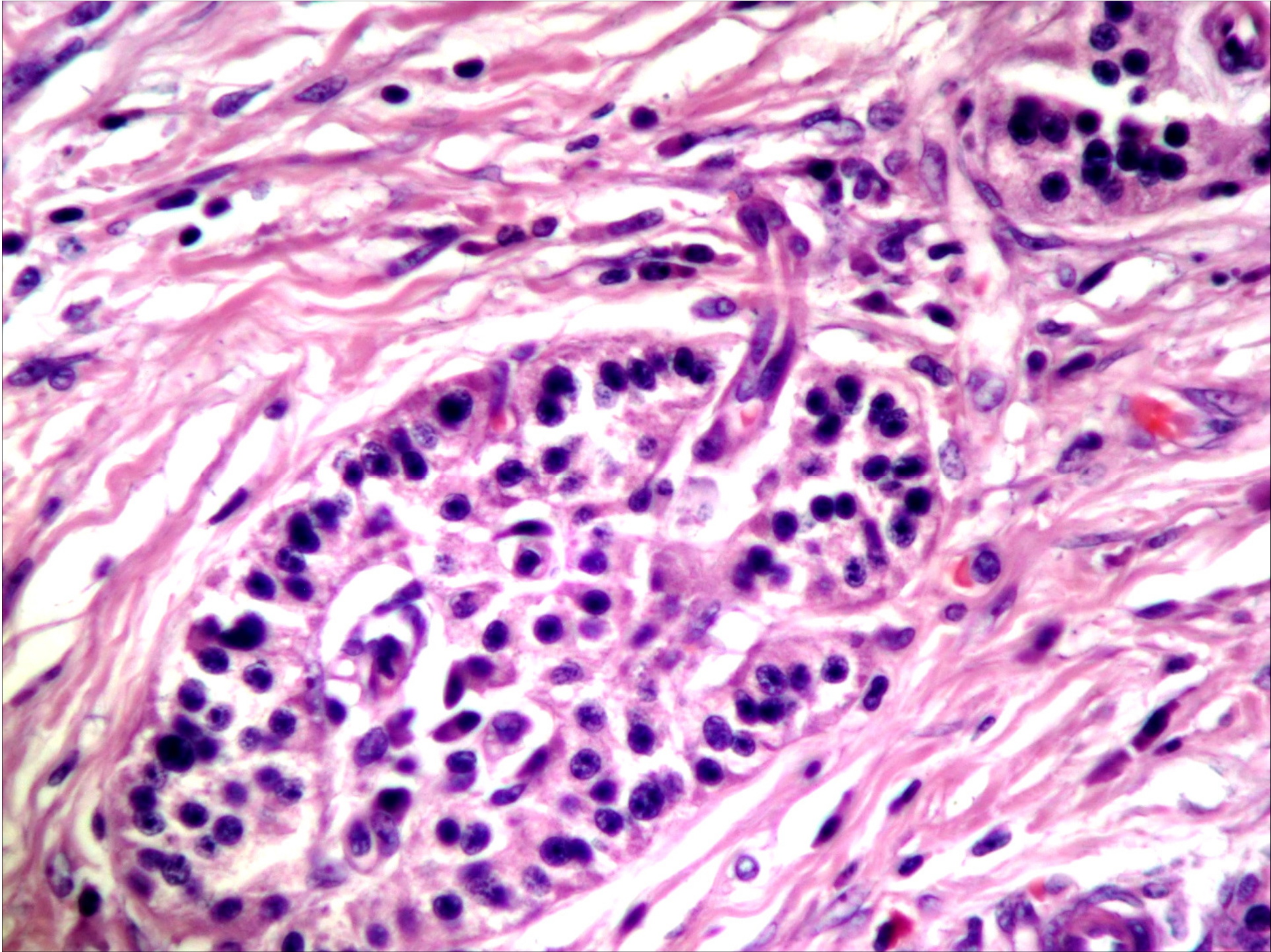




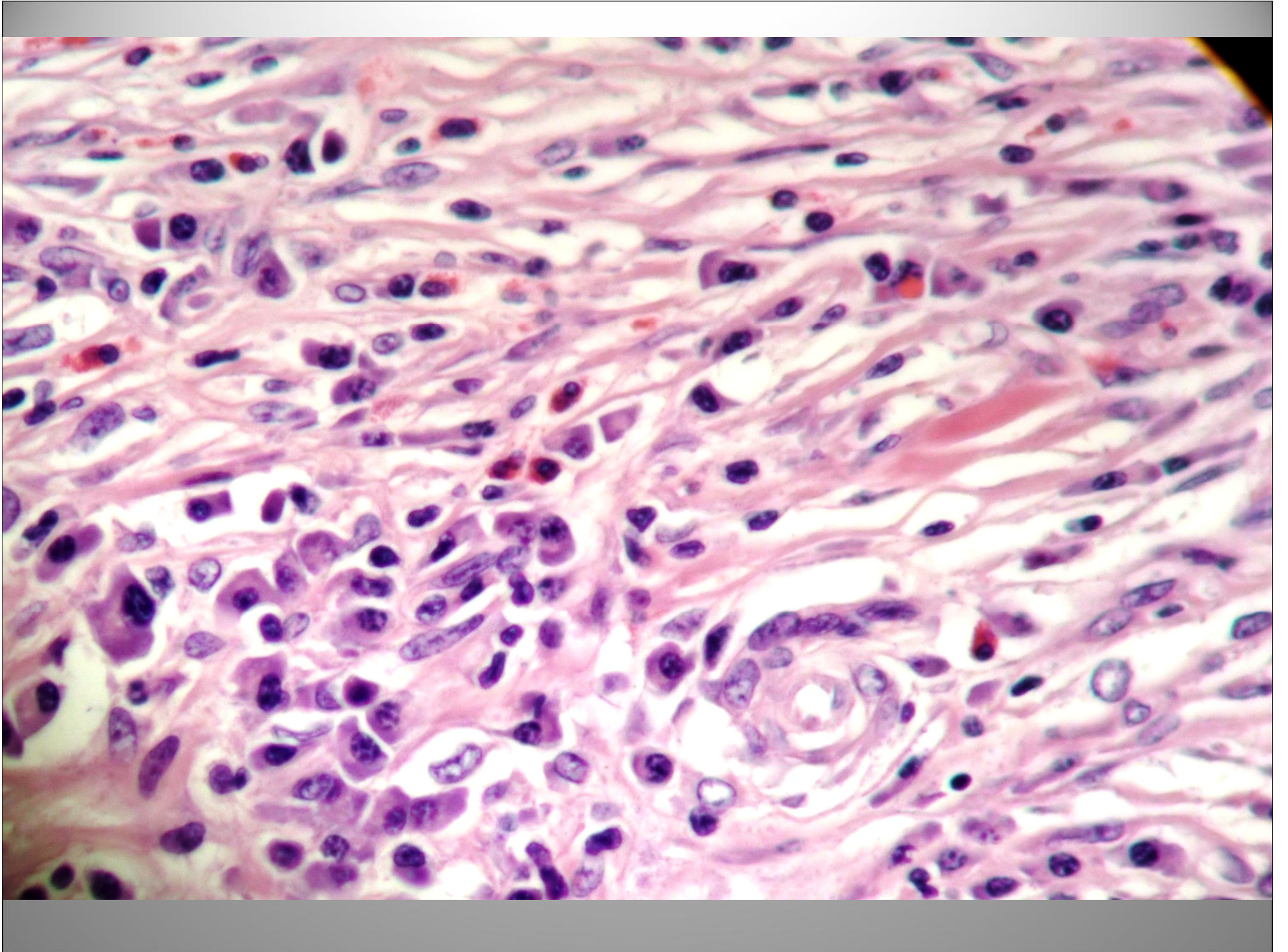




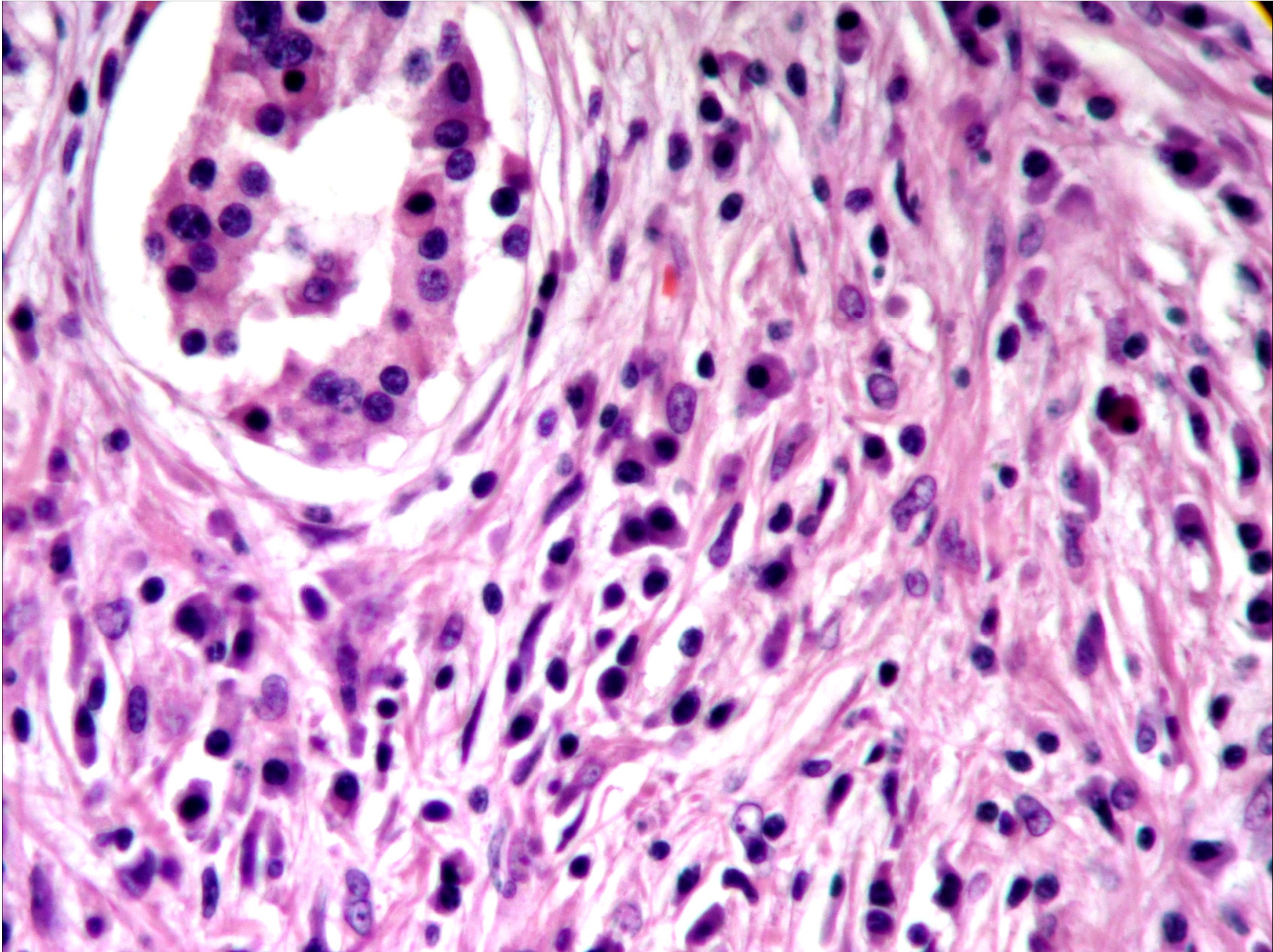




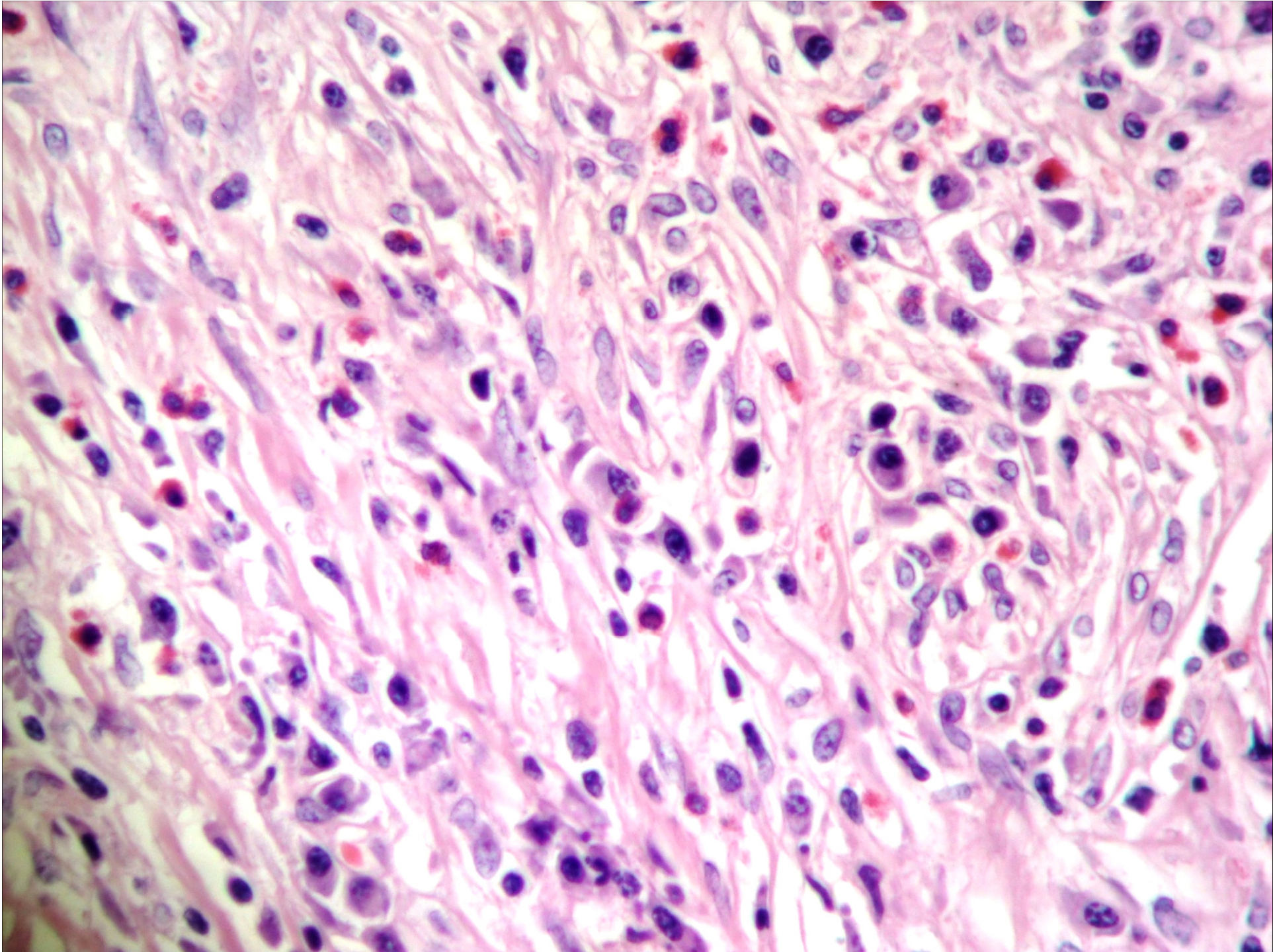




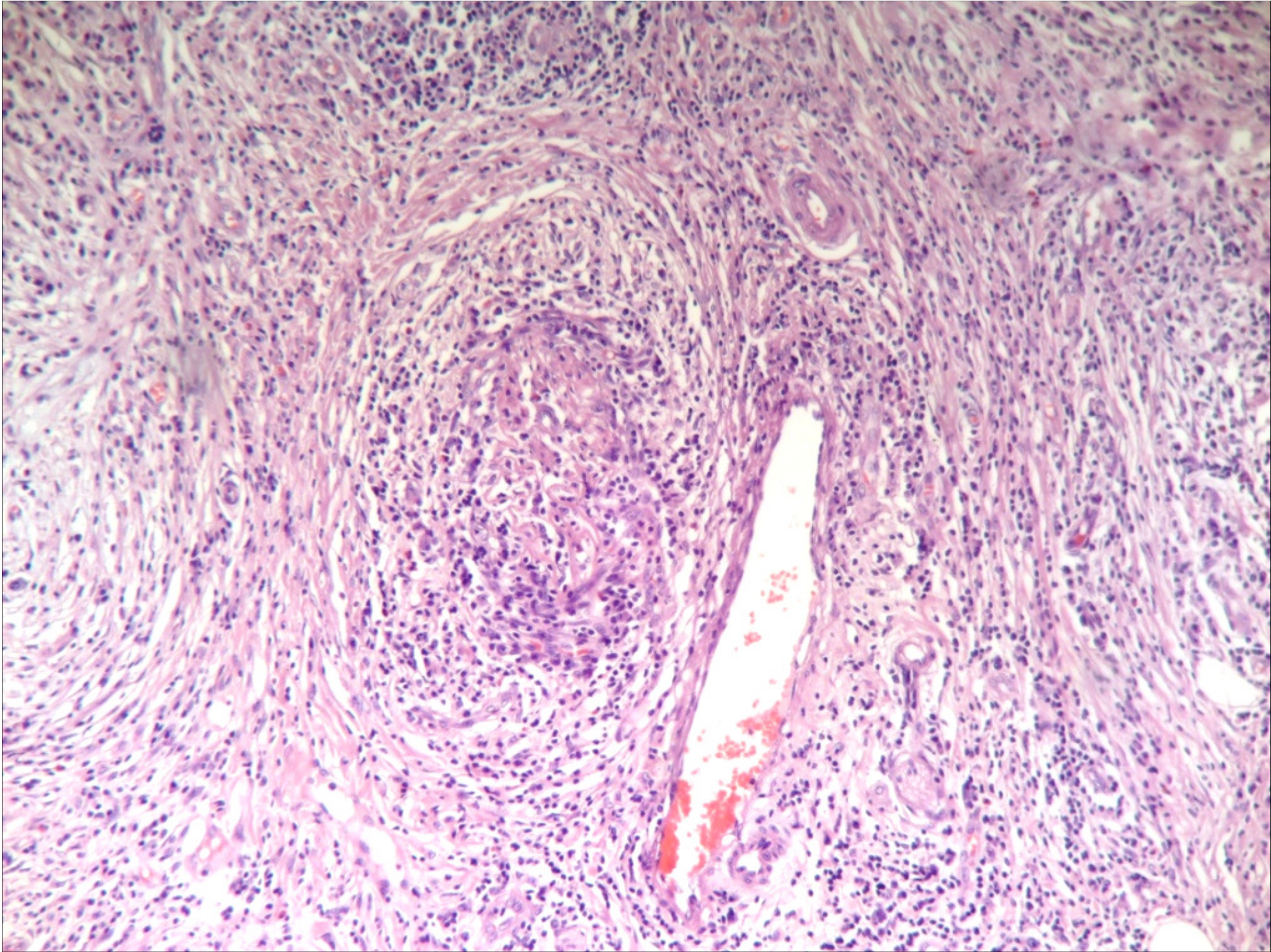




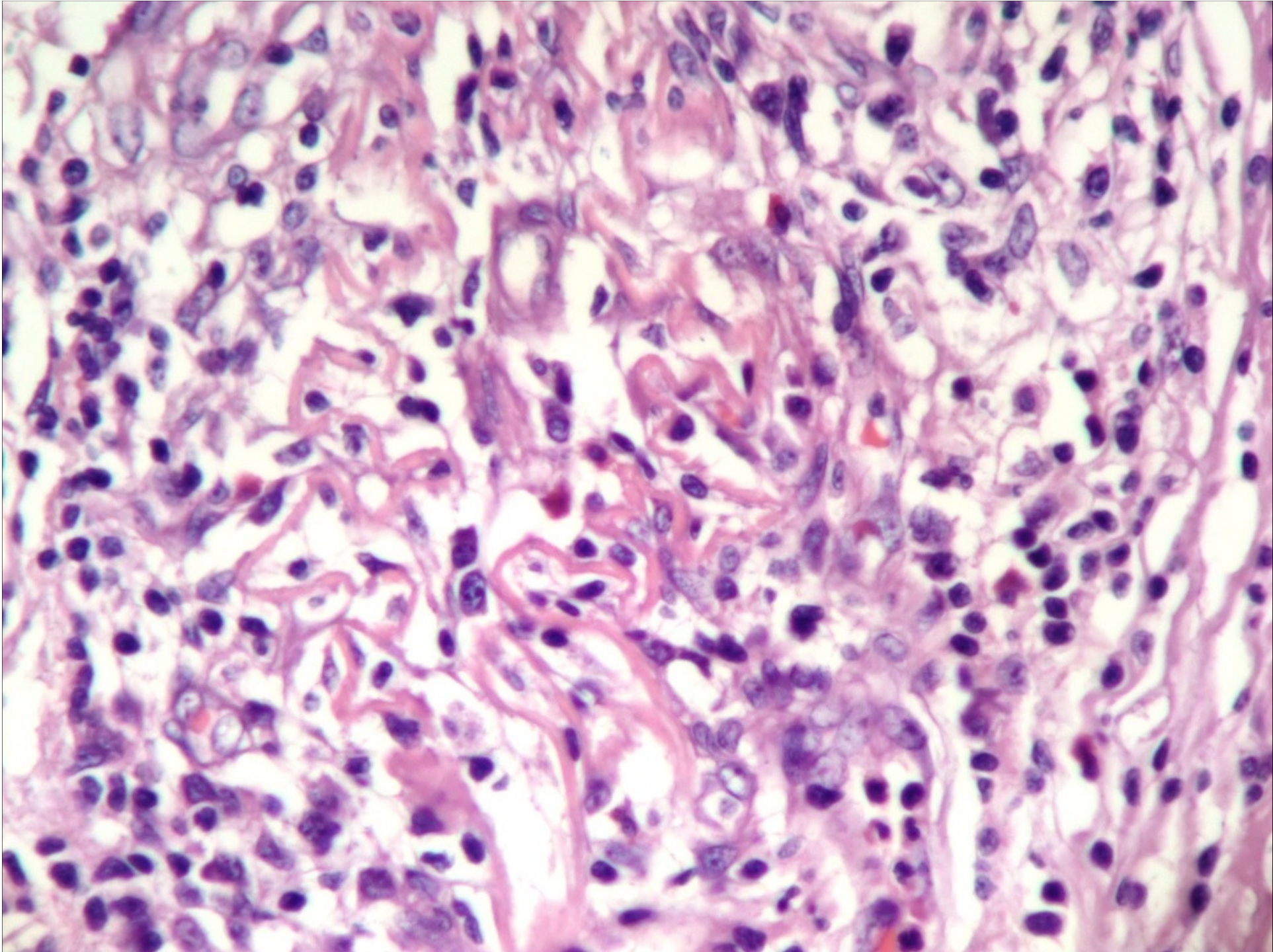
















Sociedade Brasileira de Patologia

**Com base nos achados  
morfológicos, qual o seu  
diagnóstico?**