



Sociedade Brasileira de Patologia



Caso do mês

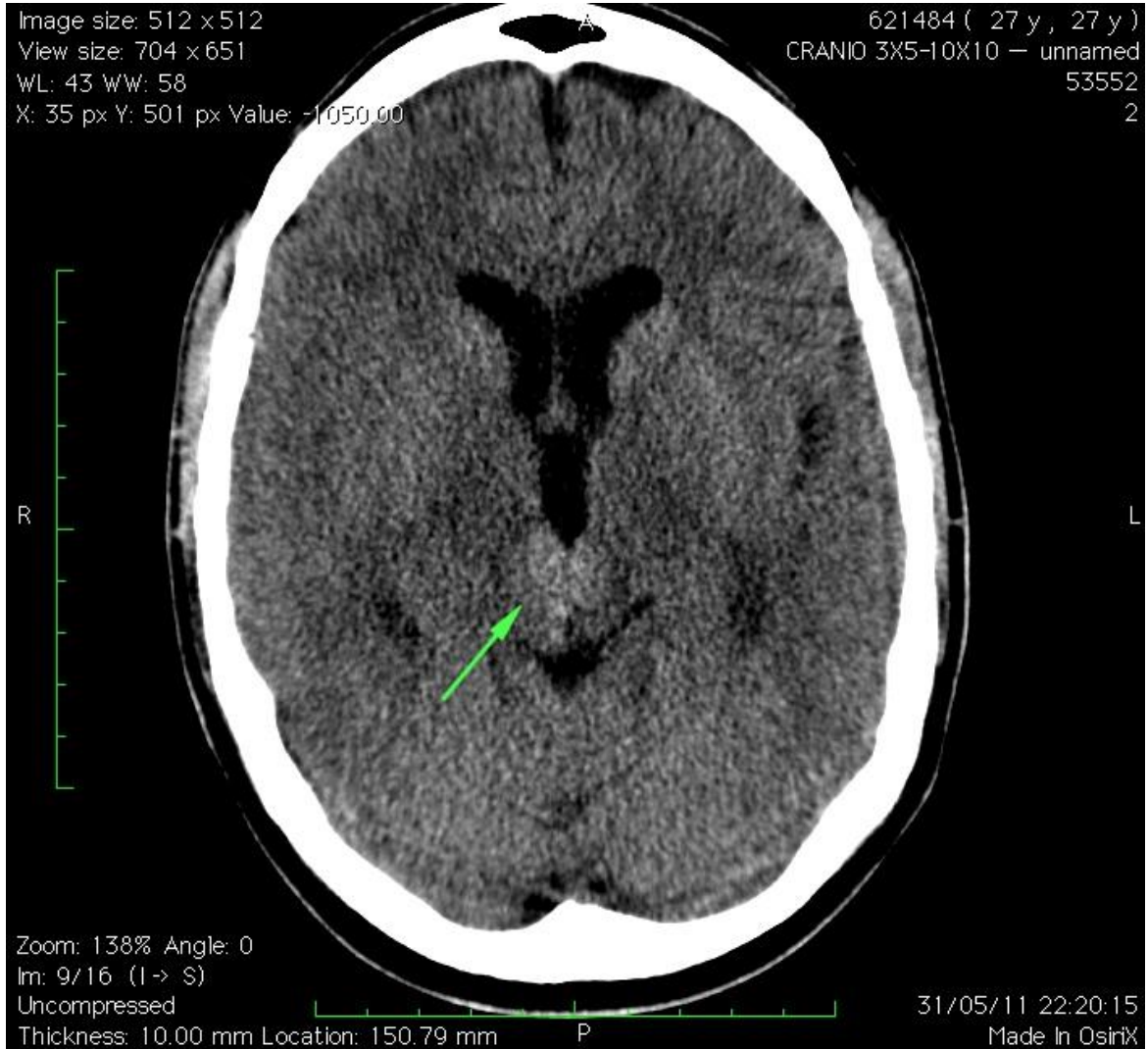
Viviane Hellmeister Camolese Martins
1º ano de Residência em Patologia



História Clínica

- Masculino, 27 anos
- Síndrome de Parinaud há 2 meses:
 - Incapacidade de olhar para cima, inclusive com desvio permanente dos olhos para baixo (Sinal do Sol Poente)
 - Ausência de reação pupilar à luz
 - Distúrbio de convergência

TC de Crânio



TC de Crânio

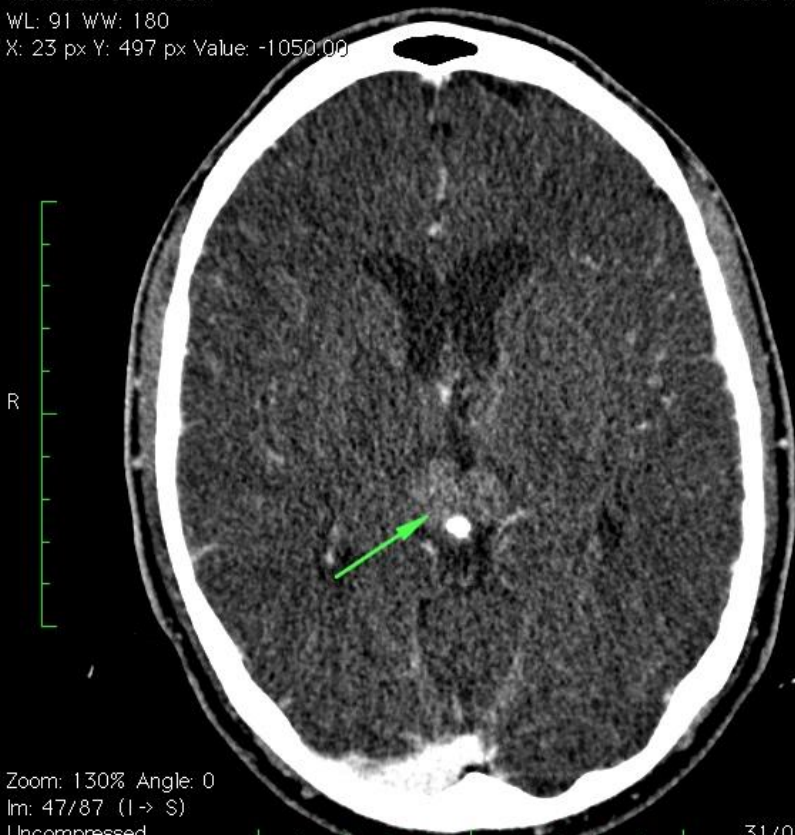
Image size: 512 x 512
View size: 665 x 651
WL: 91 WW: 180
X: 23 px Y: 497 px Value: -1050.00

A

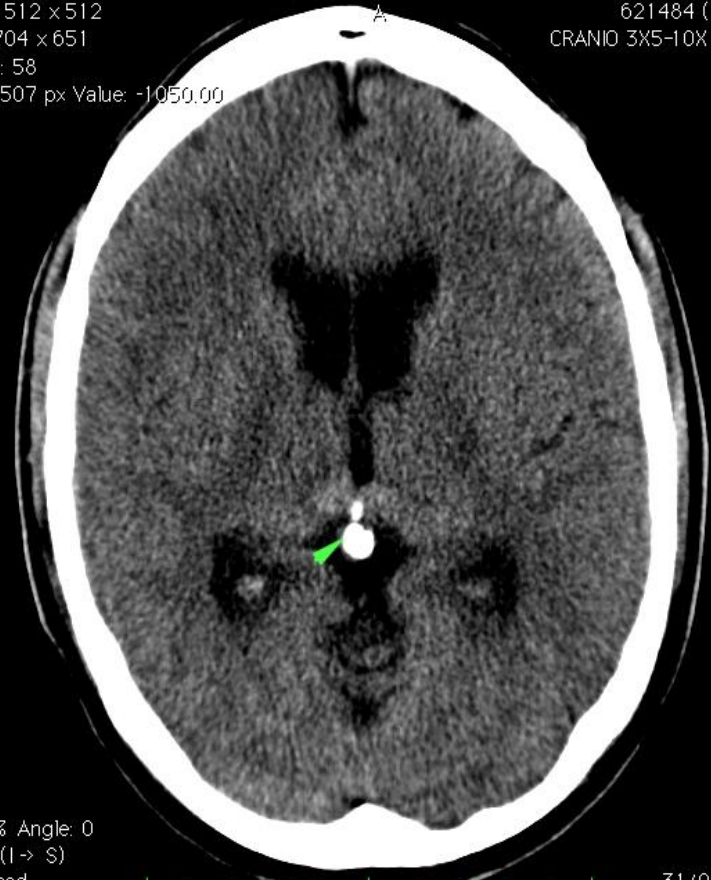
621484 (27 y, 27 y)
ANGIO 1X1 — unnamed
53552
3 X: 37 px Y: 507 px Value: -1050.00

A

621484 (27 y, 27 y)
CRANIO 3X5-10X10 — unnamed
53552
2



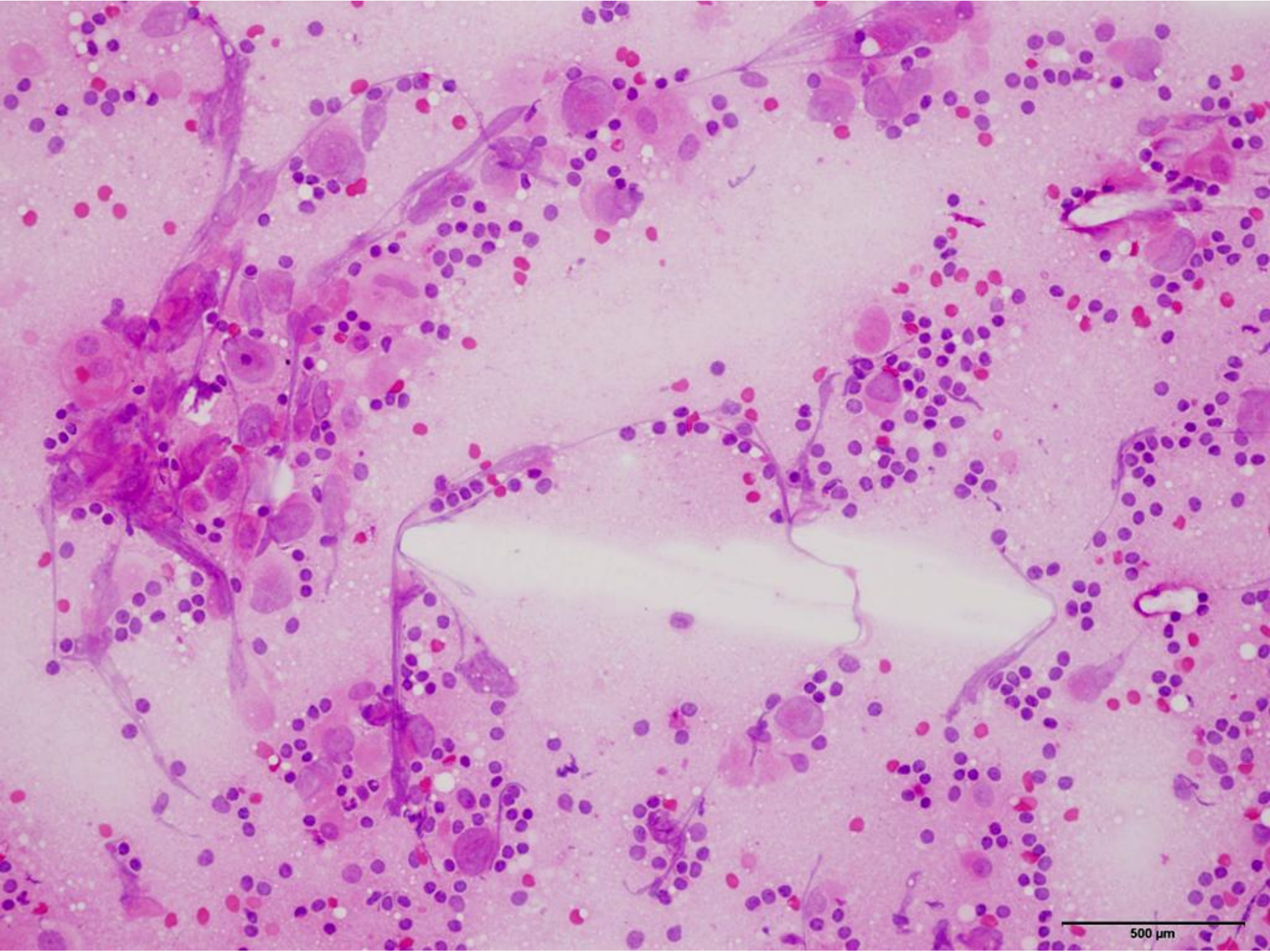
31/05/11 22:38:06
Made In Osirix



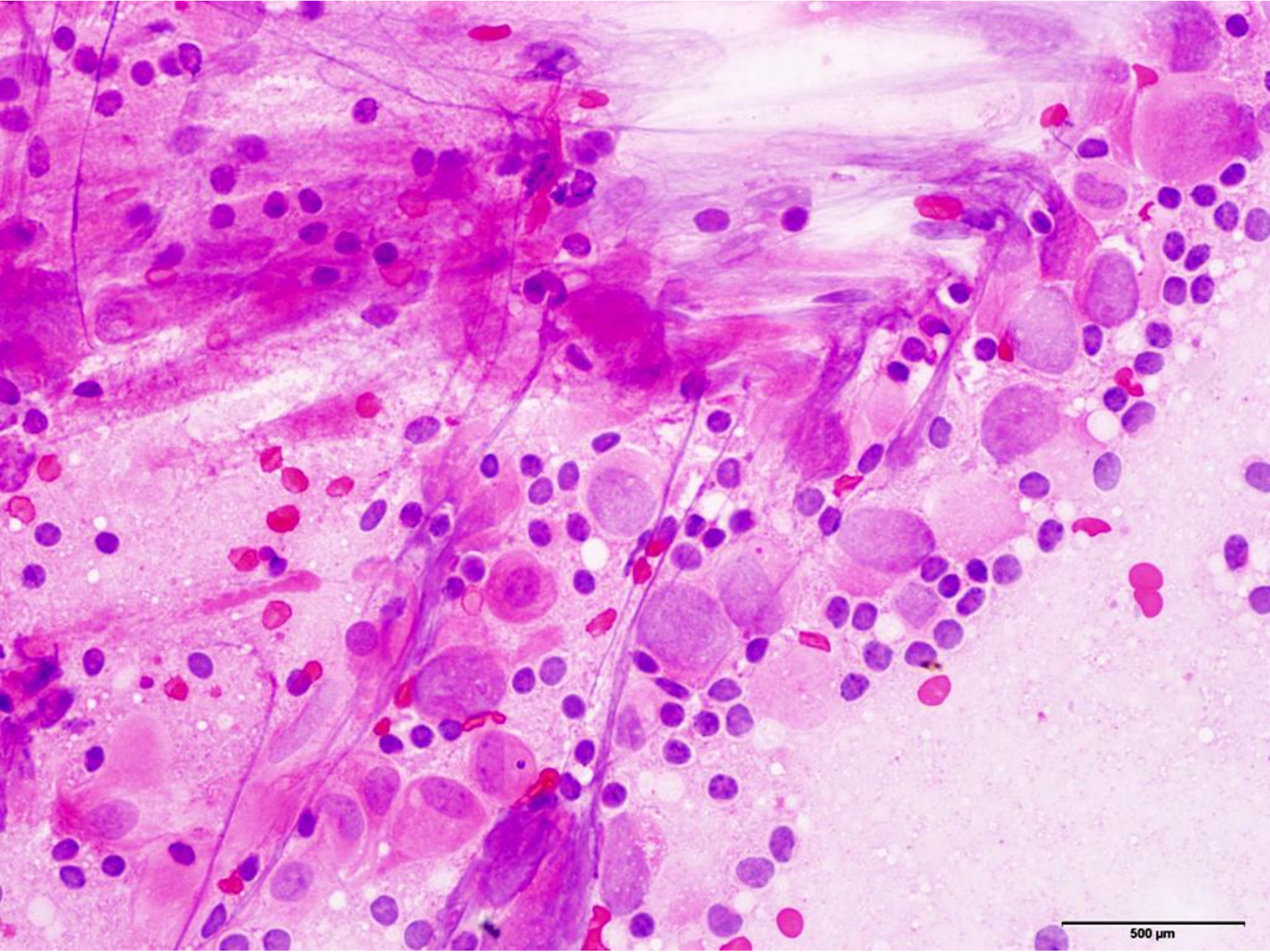
31/05/11 22:20:23
Made In Osirix

Citologia

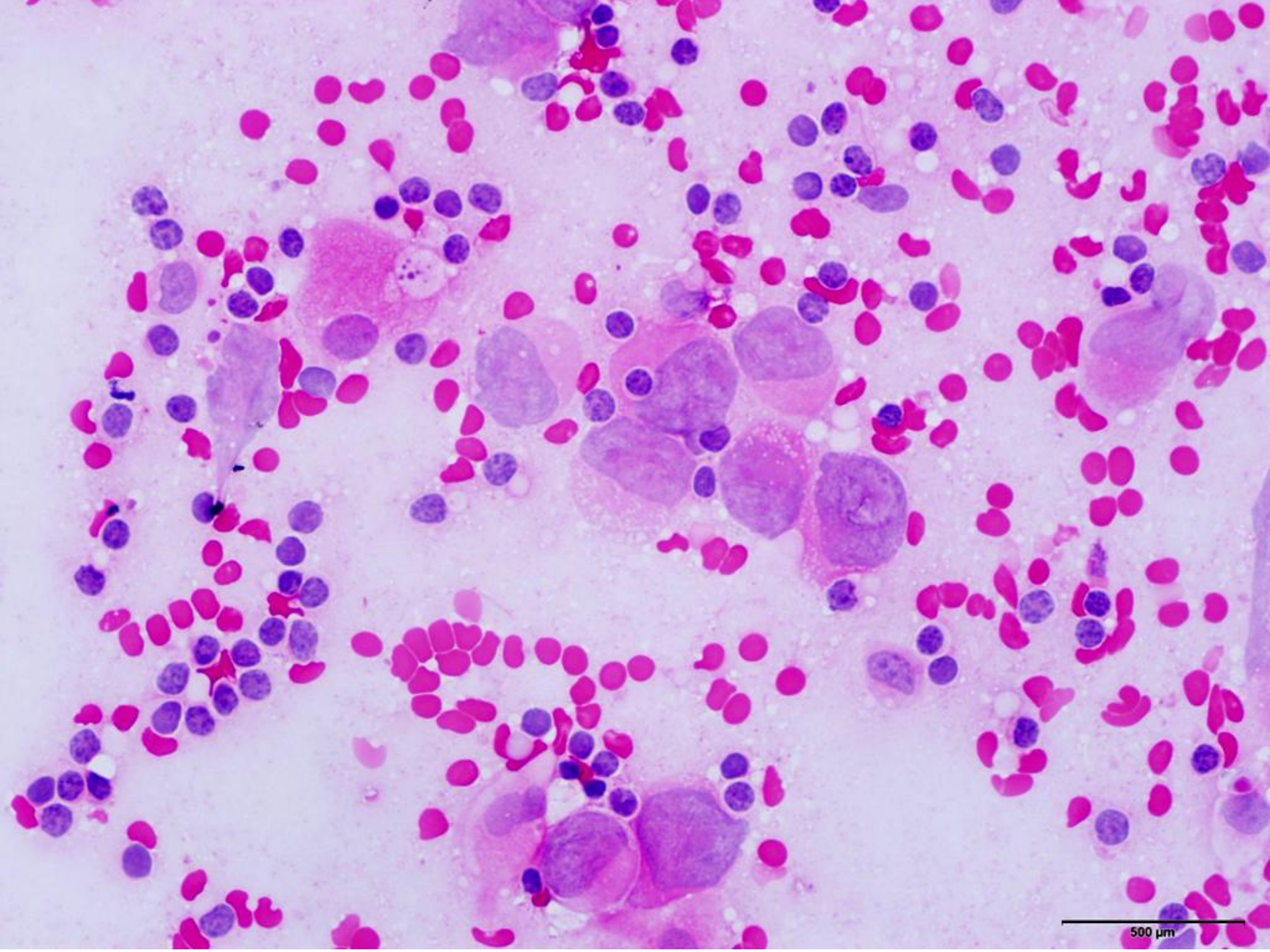
- Congelação
- 5 fragmentos arredondados de tecido pardo, macio, medindo em conjunto 1,0 x 0,5 x 0,4 cm
- “Imprint” e “squash” (esfregaço)



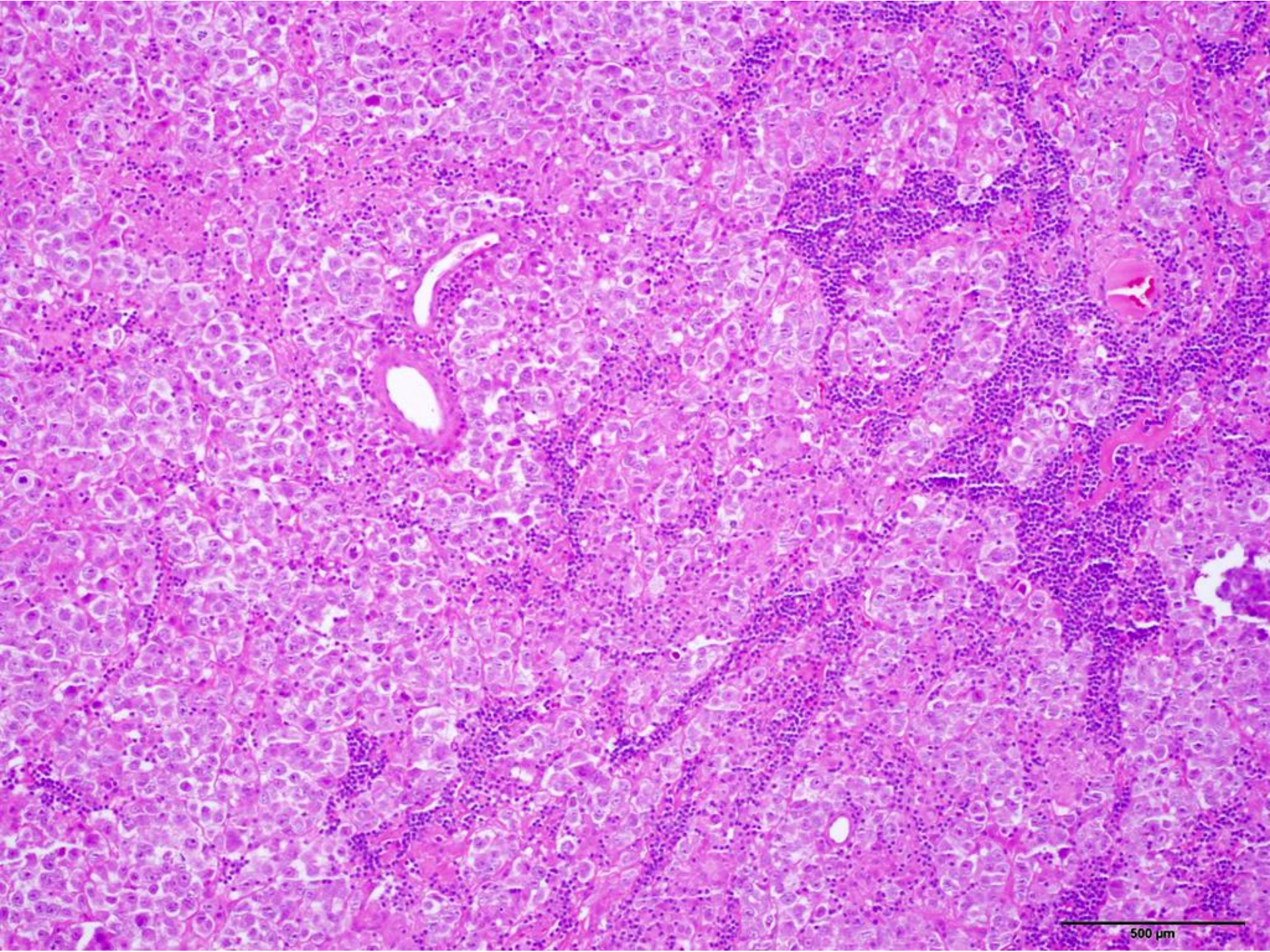
500 μ m



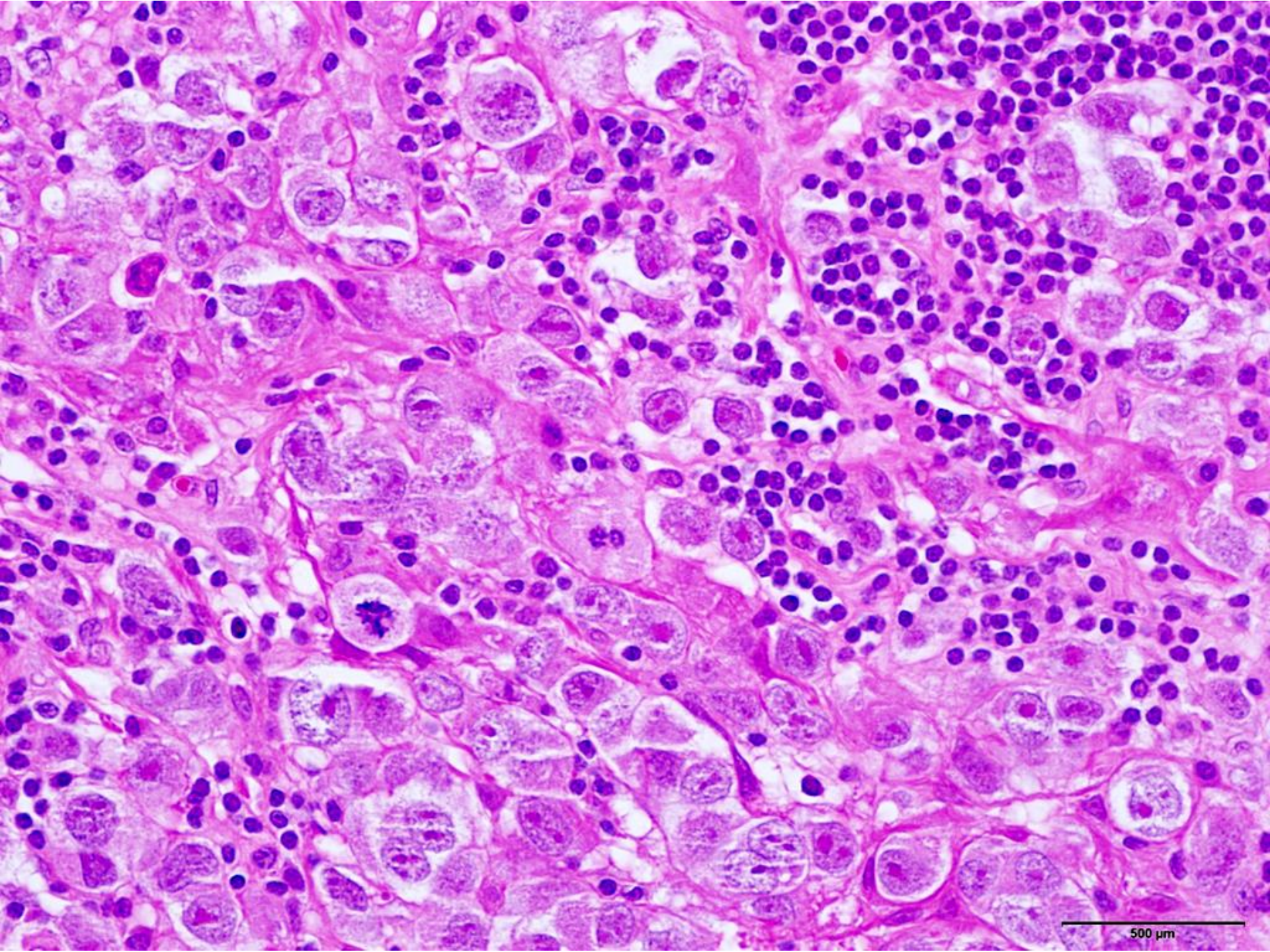
500 μm



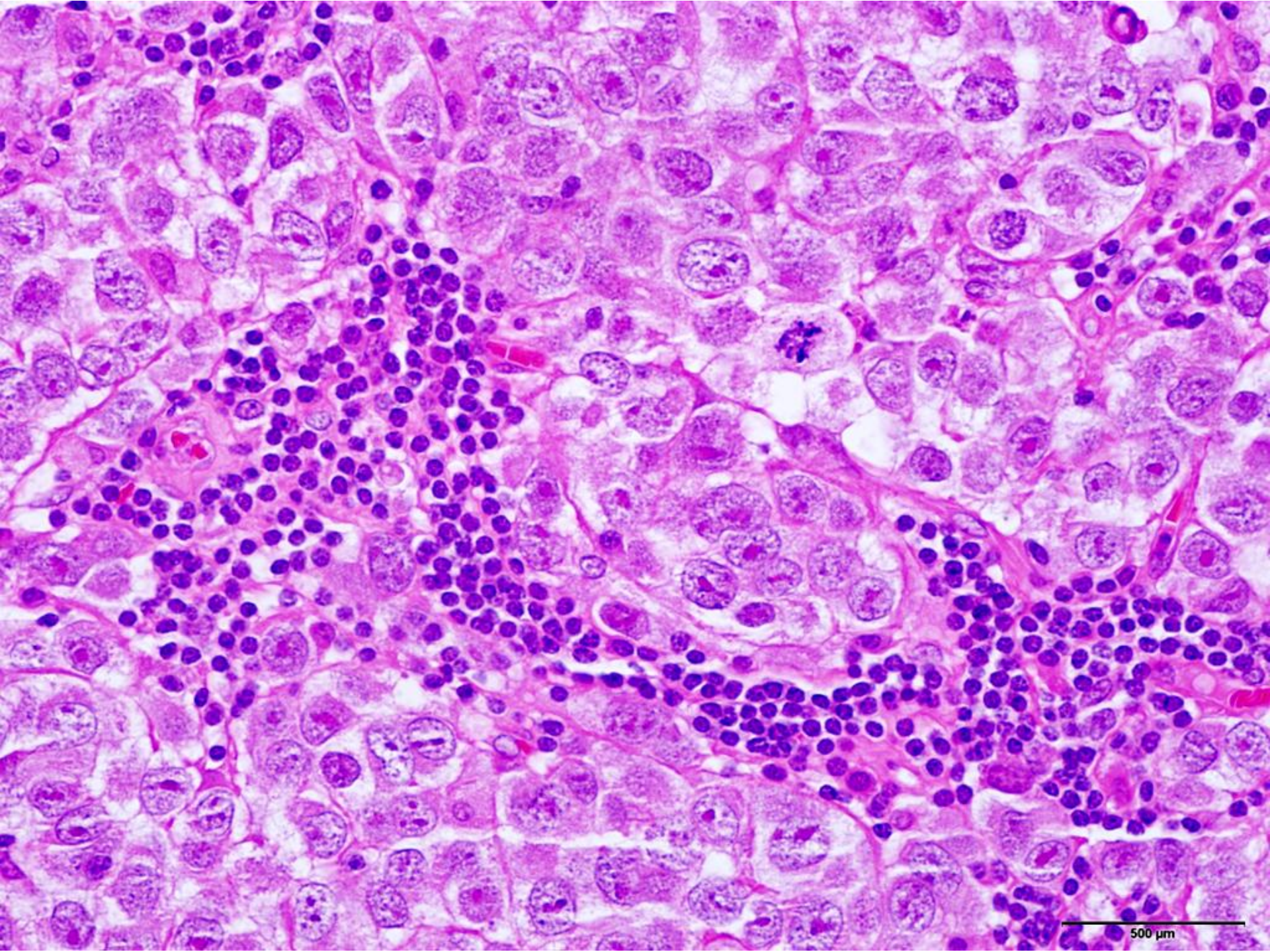
500 μ m



500 μm



500 μ m



500 μm



Sociedade Brasileira de Patologia

**Com base nos achados
morfológicos, qual o seu
diagnóstico?**