



Sociedade Brasileira de Patologia



Caso do mês

Junho/2016

Caso 2

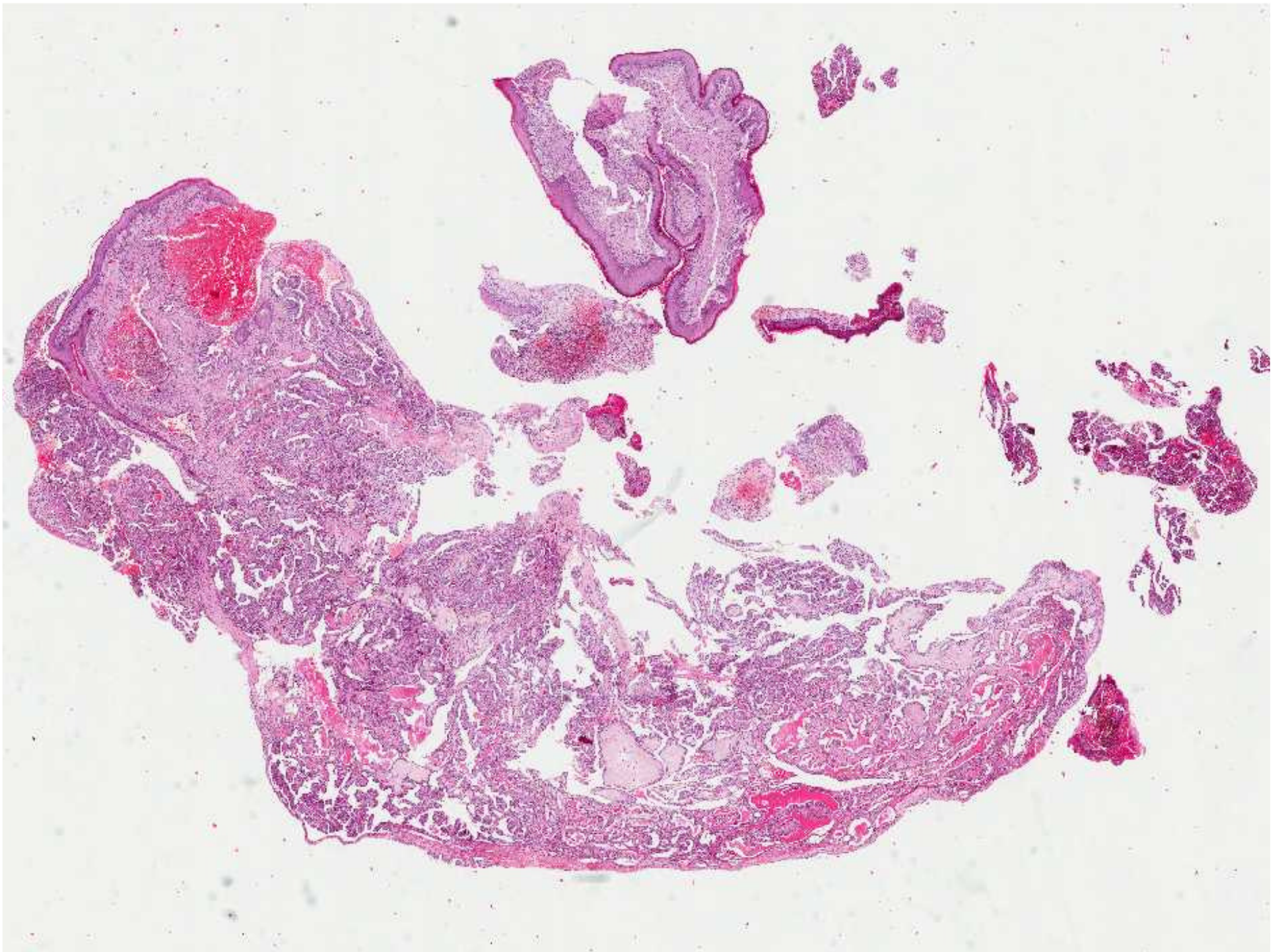
Camila Lucas Bandeira

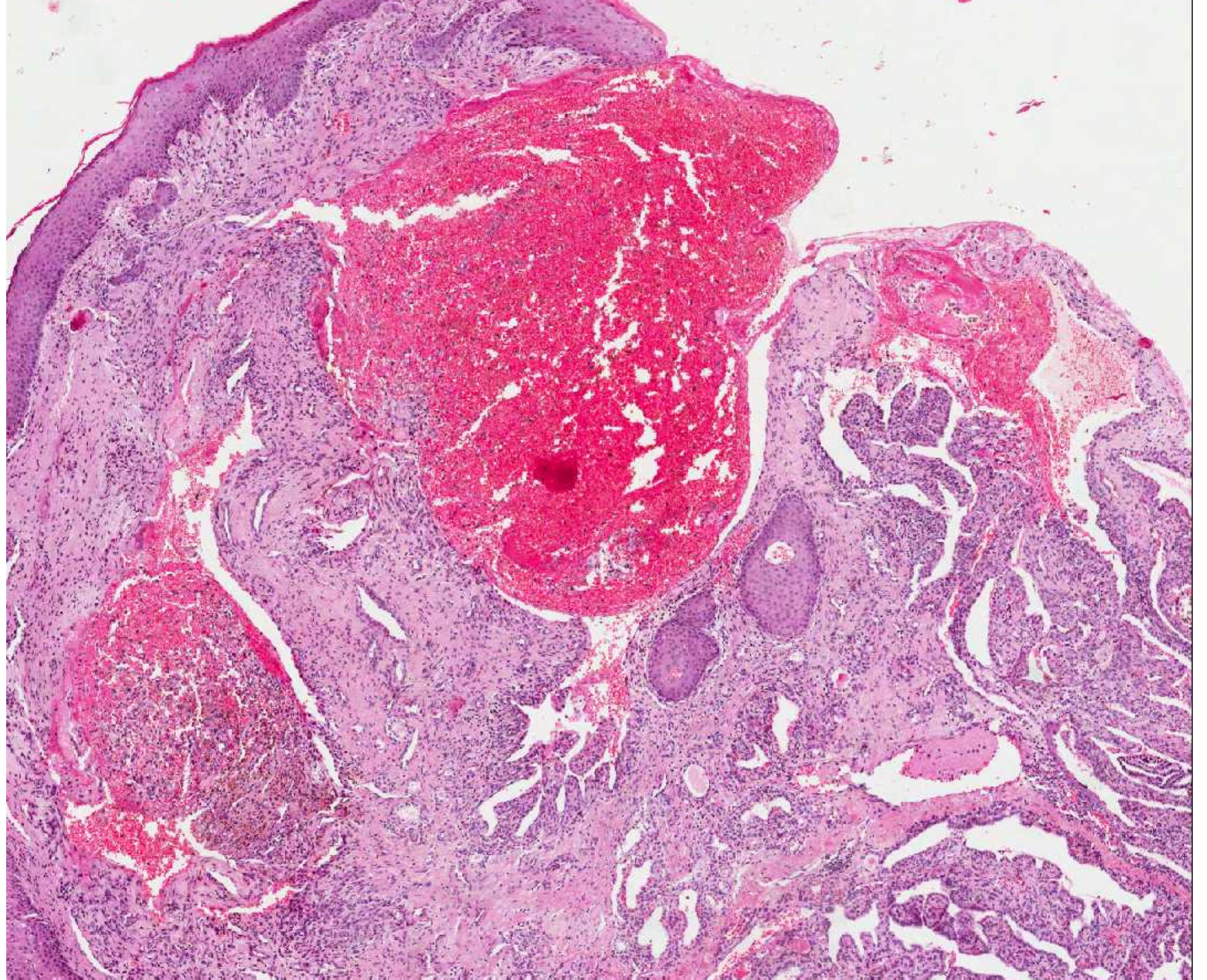


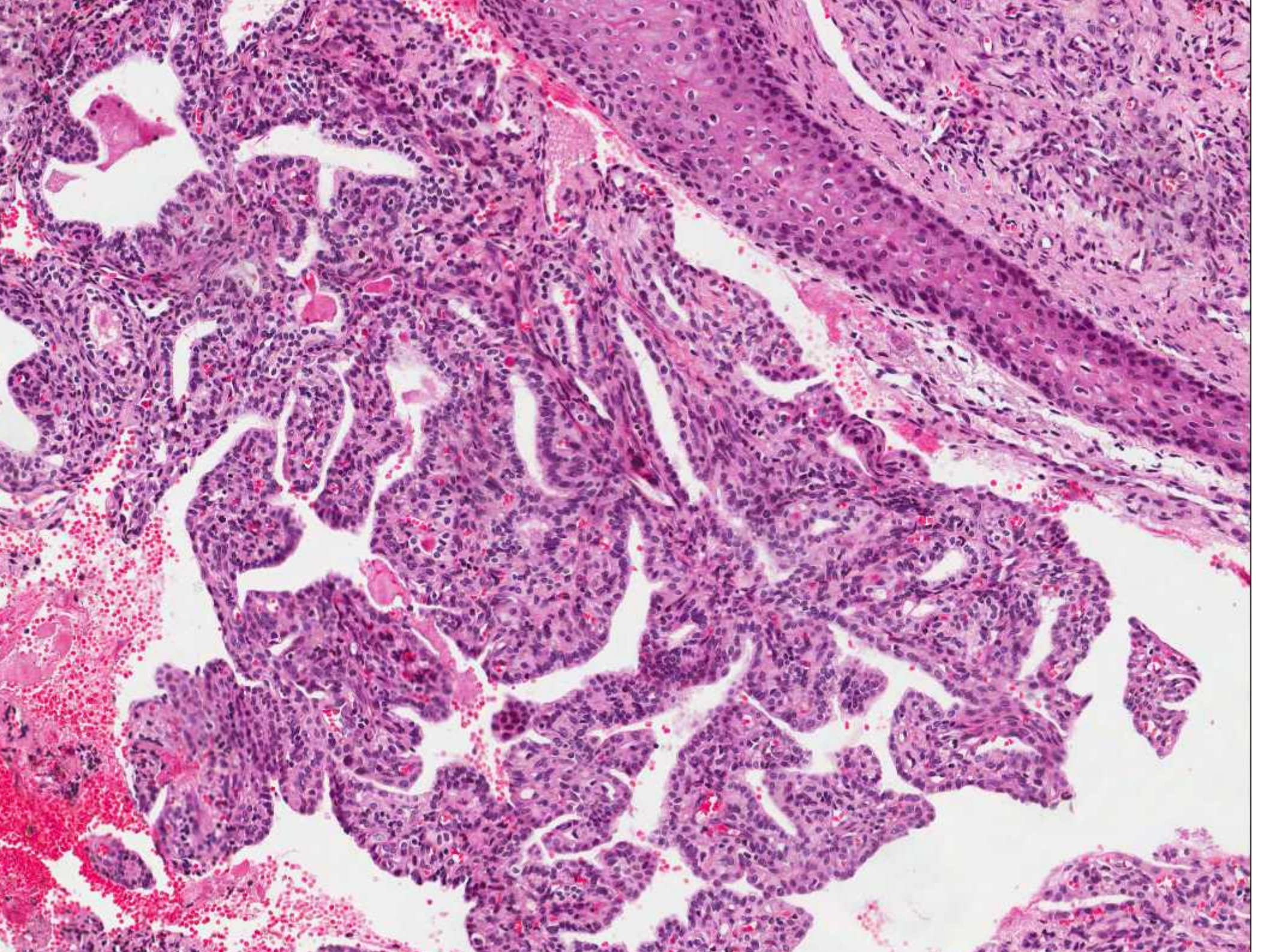
A.C. Camargo
Cancer Center

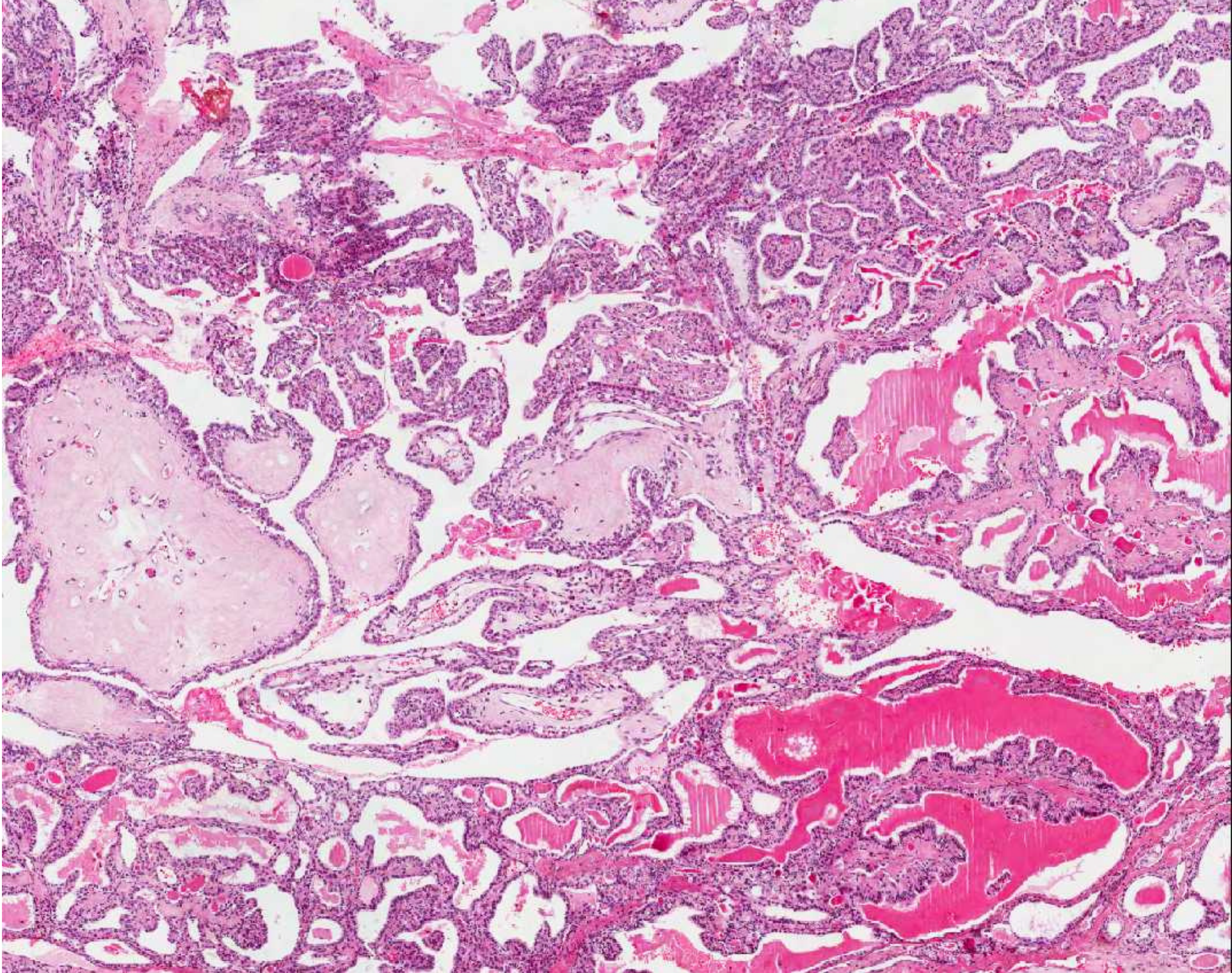


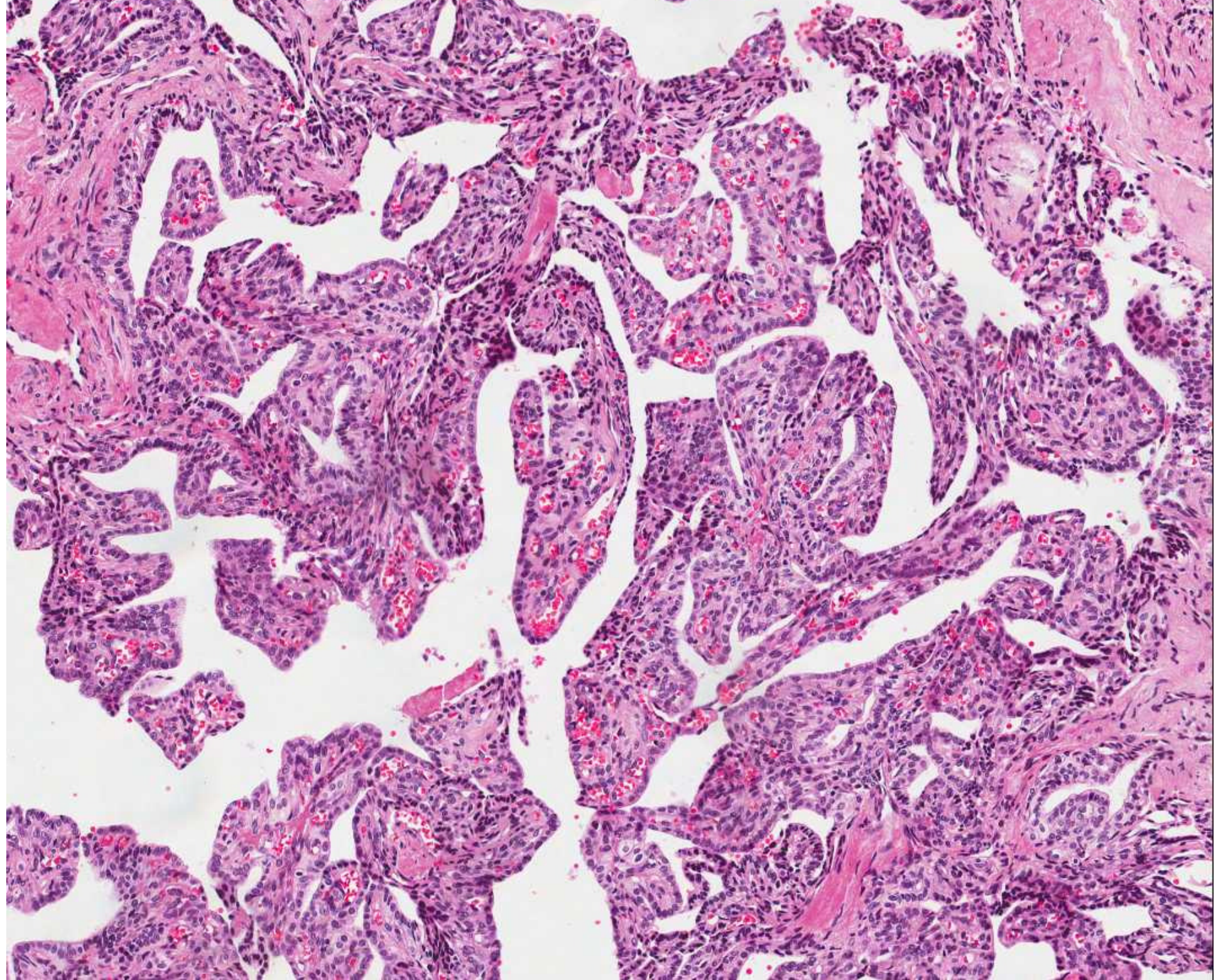
- Feminino, 25 anos, tumor em ângulo ponto-cerebelar
- História de ressecção de tumor em fossa posterior aos 13 anos
- Material proveniente da ressecção atual (recidiva).

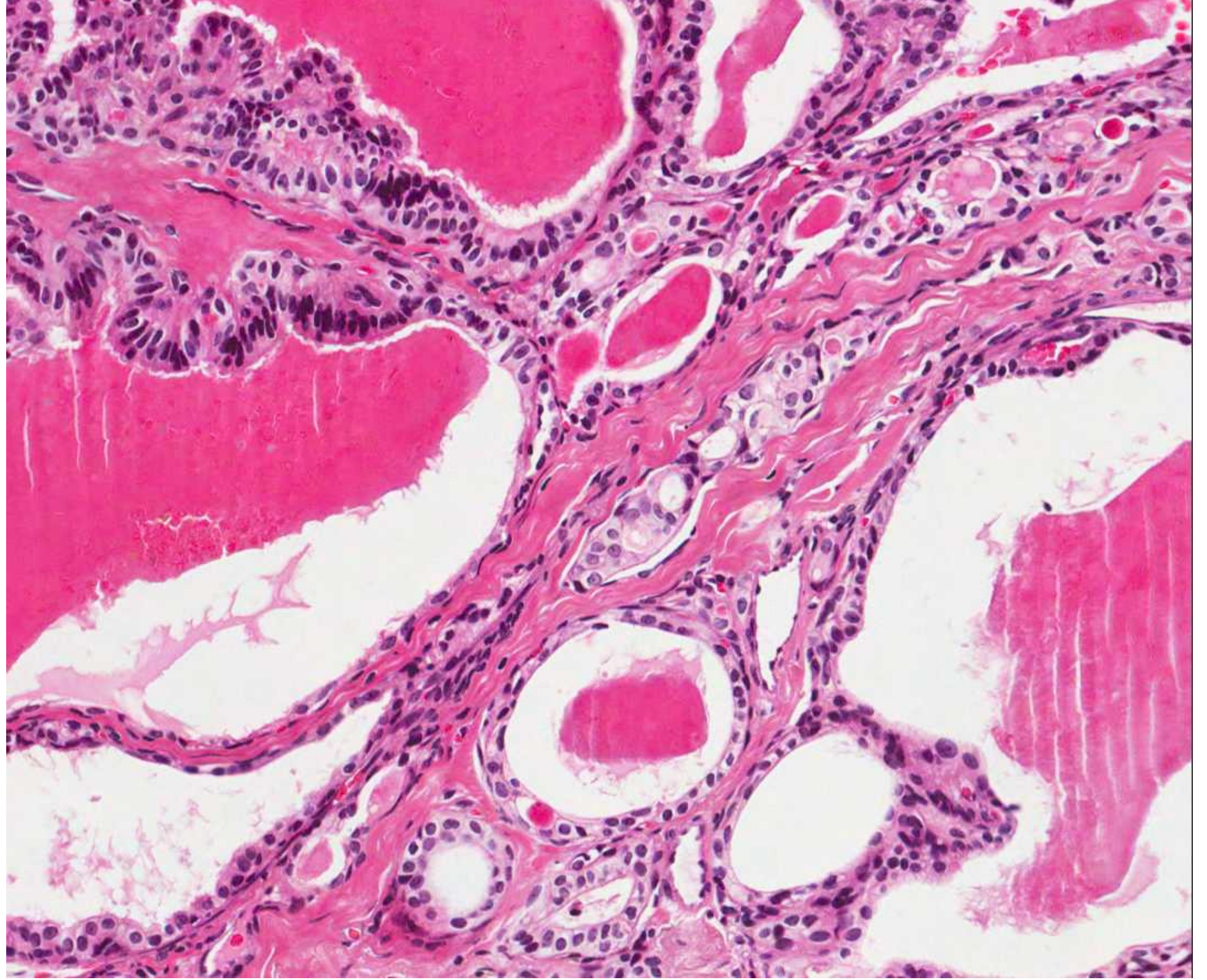


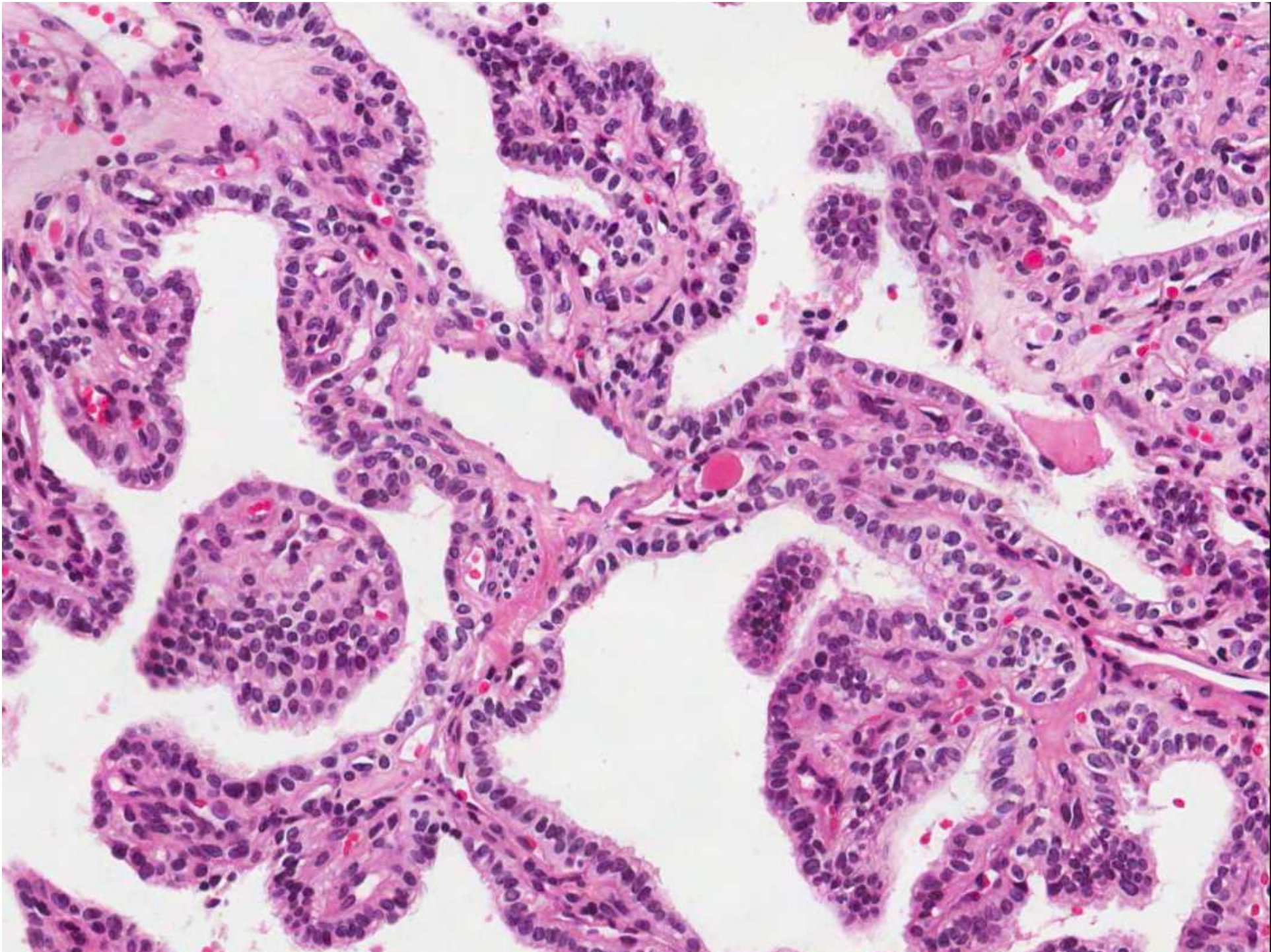


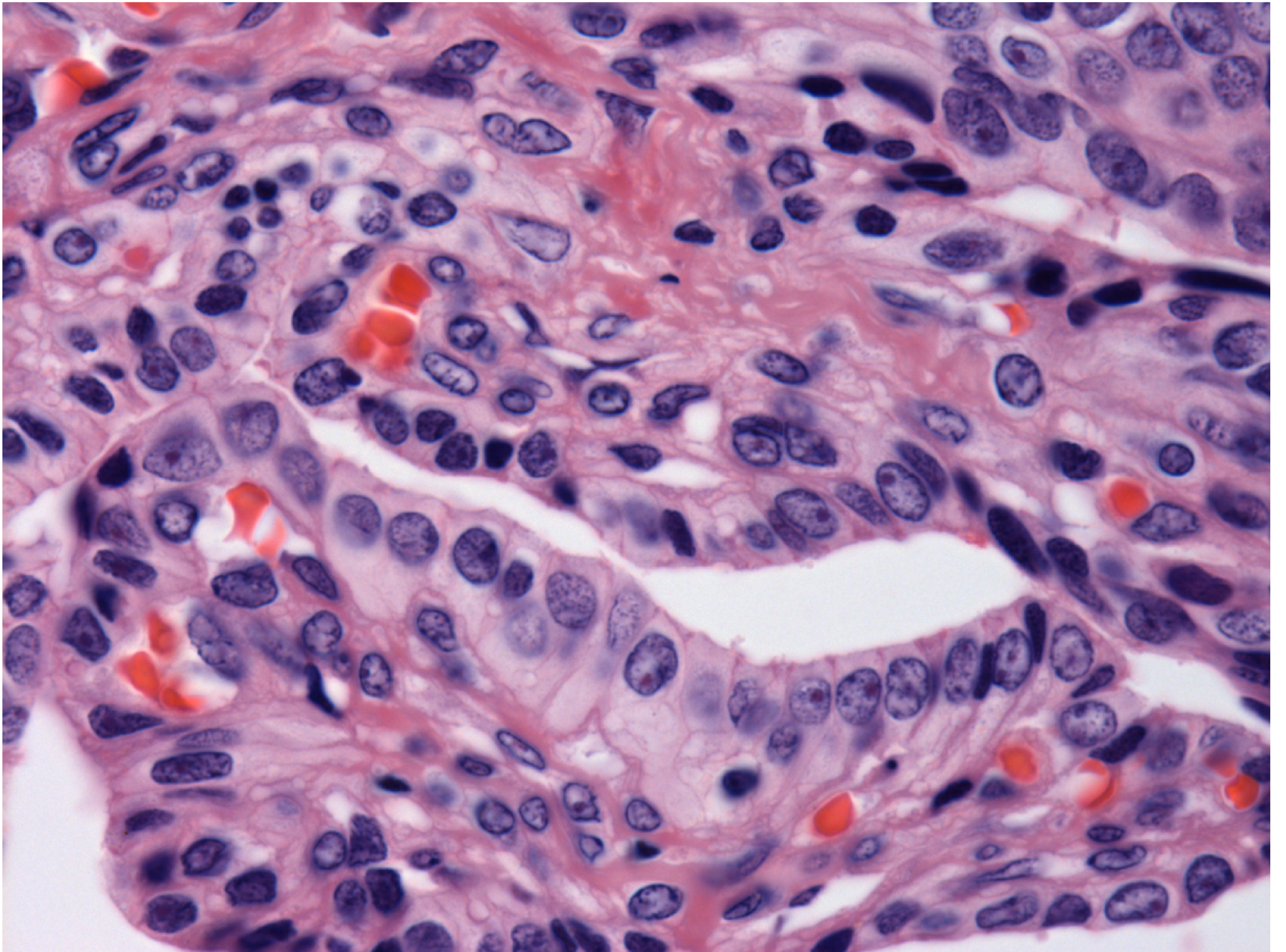


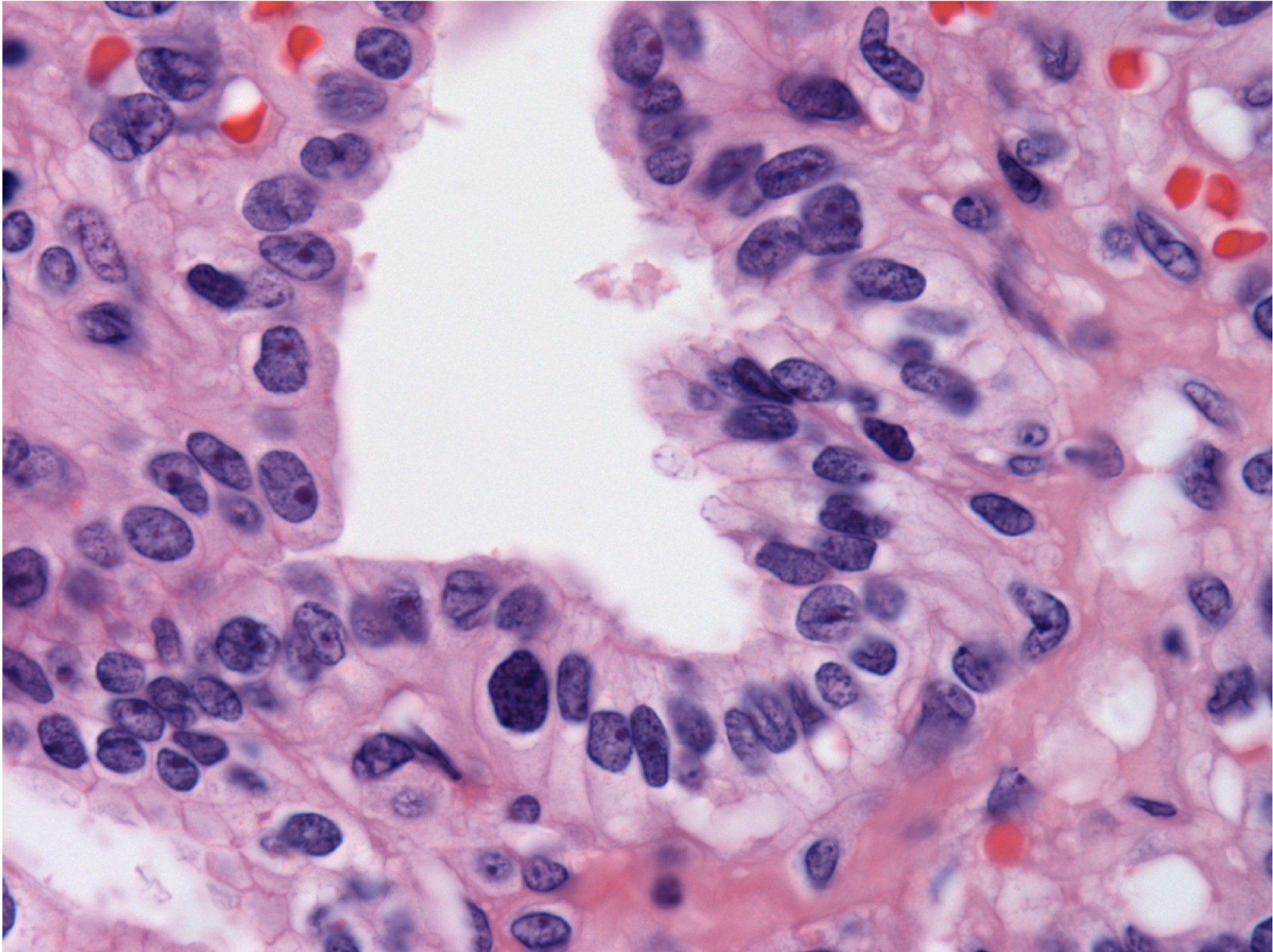




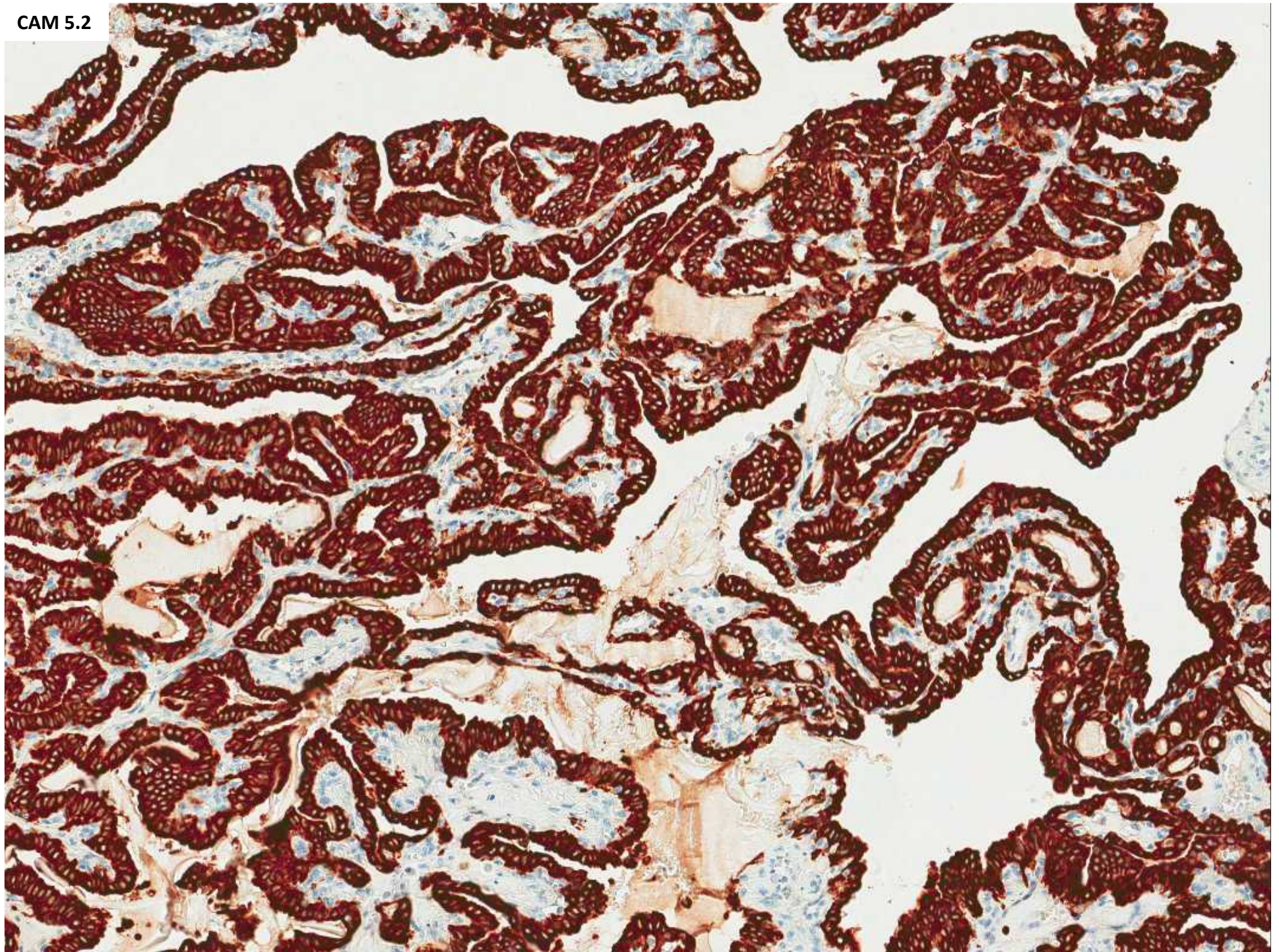


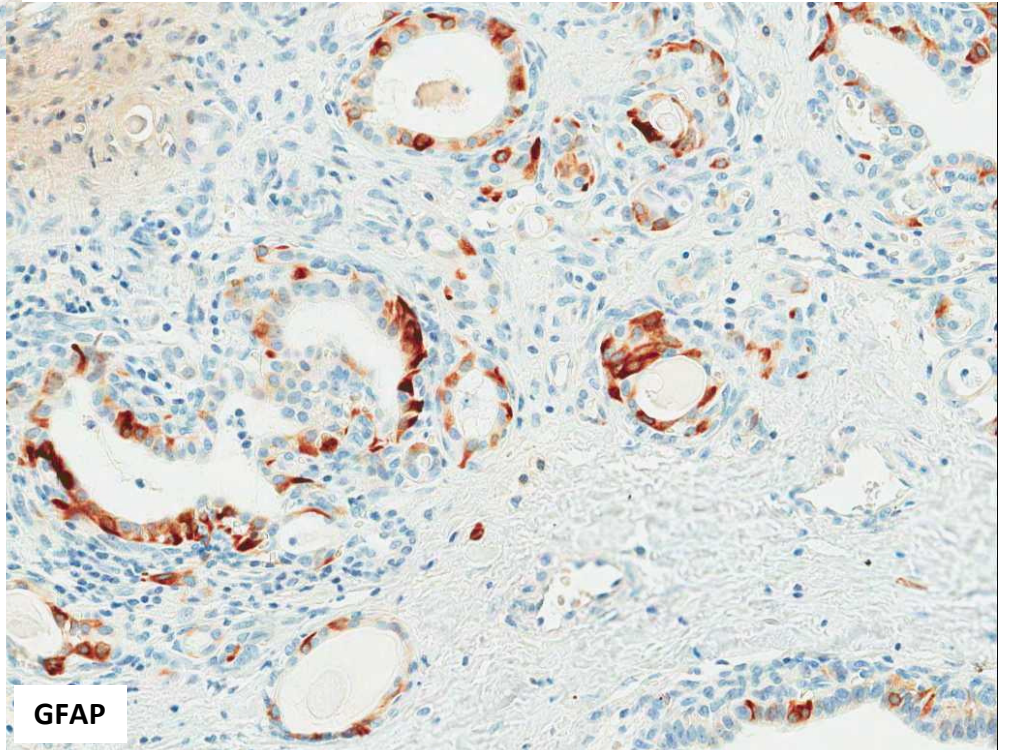
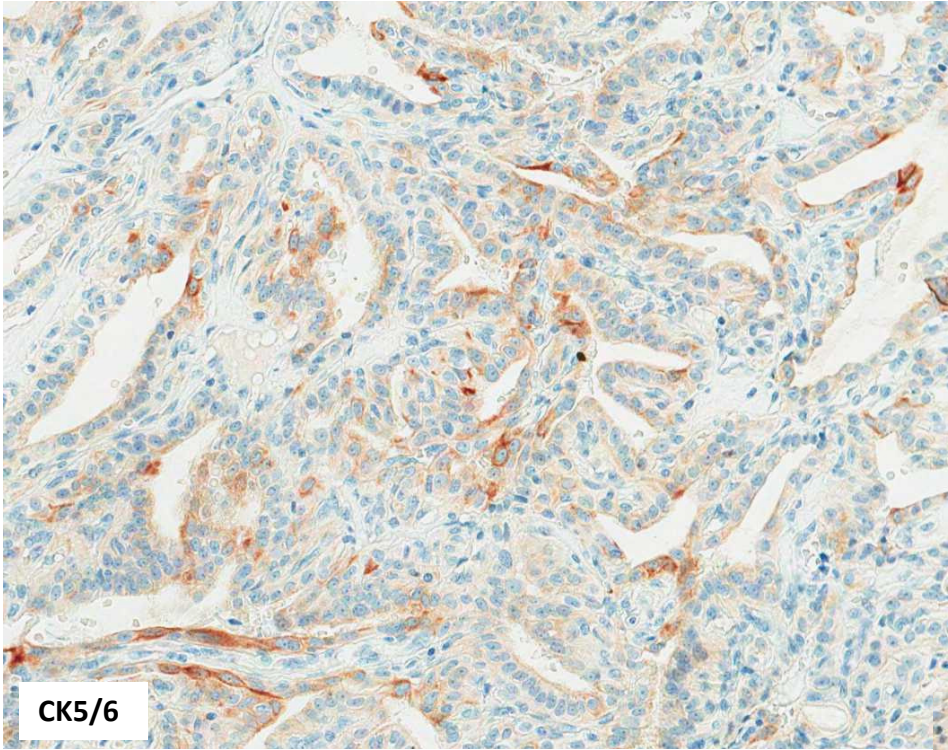


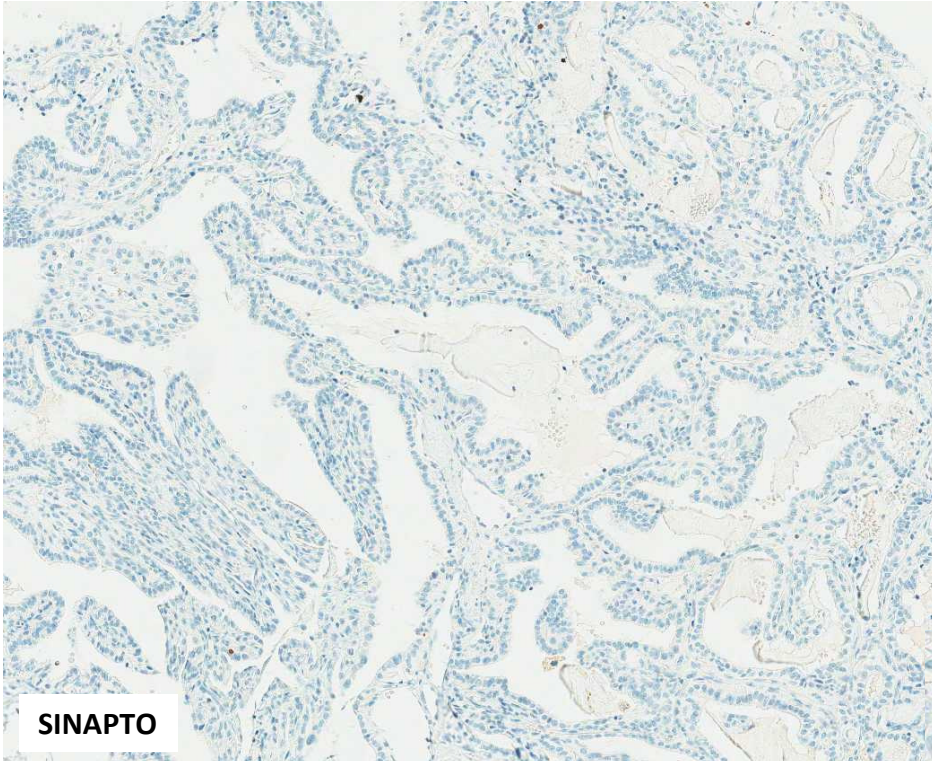




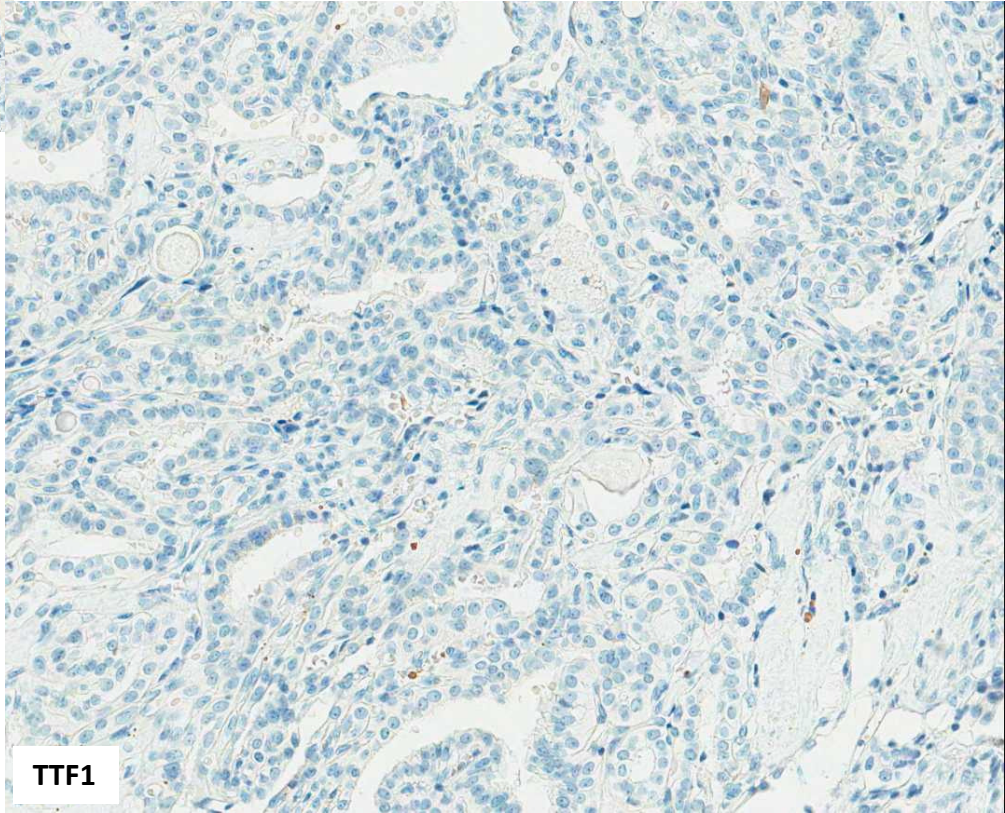
CAM 5.2







SINAPTO



TTF1



Sociedade Brasileira de Patologia



Qual o seu diagnóstico?



A.C. Camargo
Cancer Center