



Sociedade Brasileira de Patologia



Reunião APESP - 25 de abril 2015

R3 Vinícius Zanin

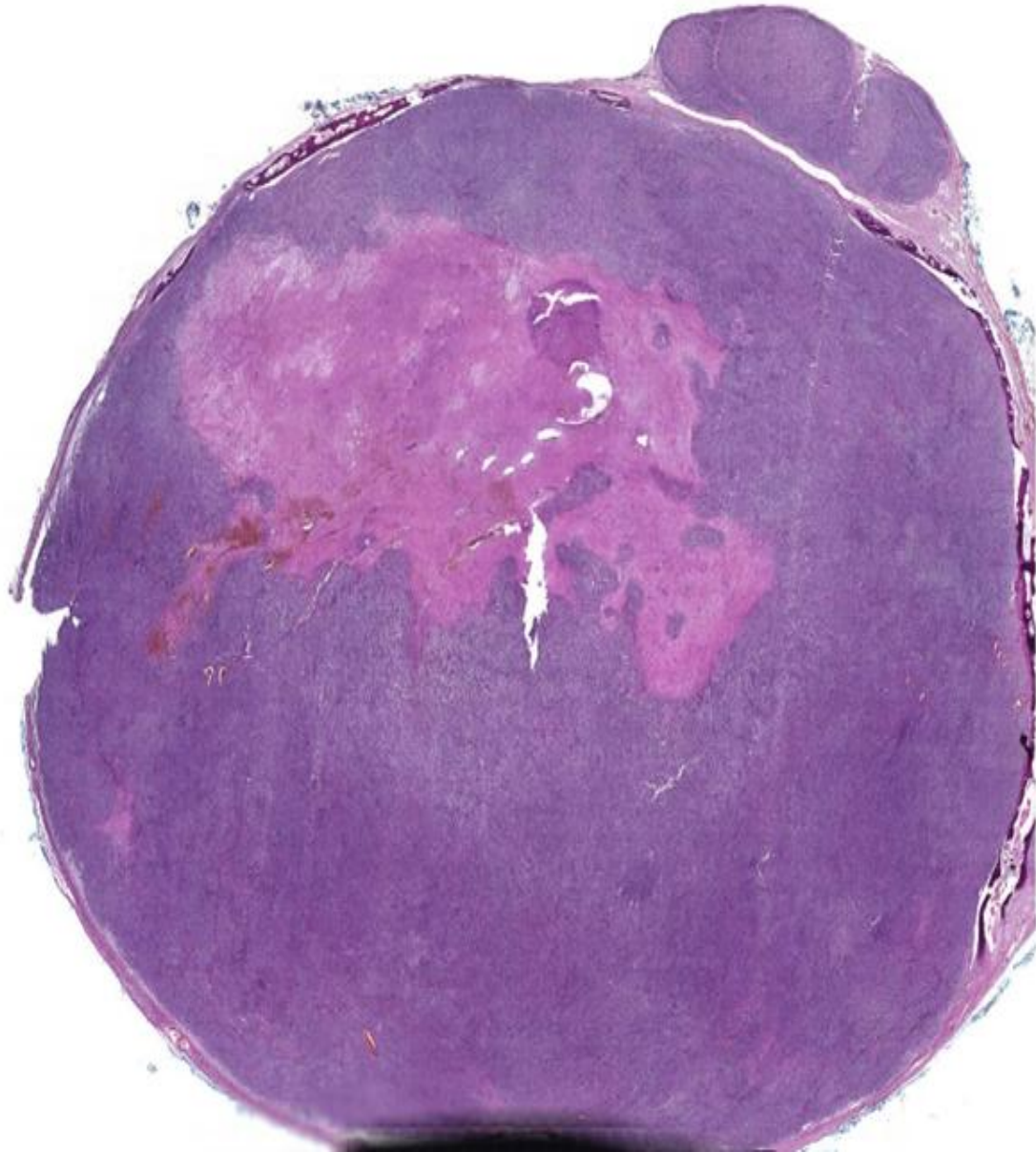
Patologia – UNESP - Botucatu

- Mulher, 26 anos
- Nódulo 5,0 cm diâmetro, não aderido e endurecido na região deltoidea direita.
- HD clínica: Pilomatrixoma

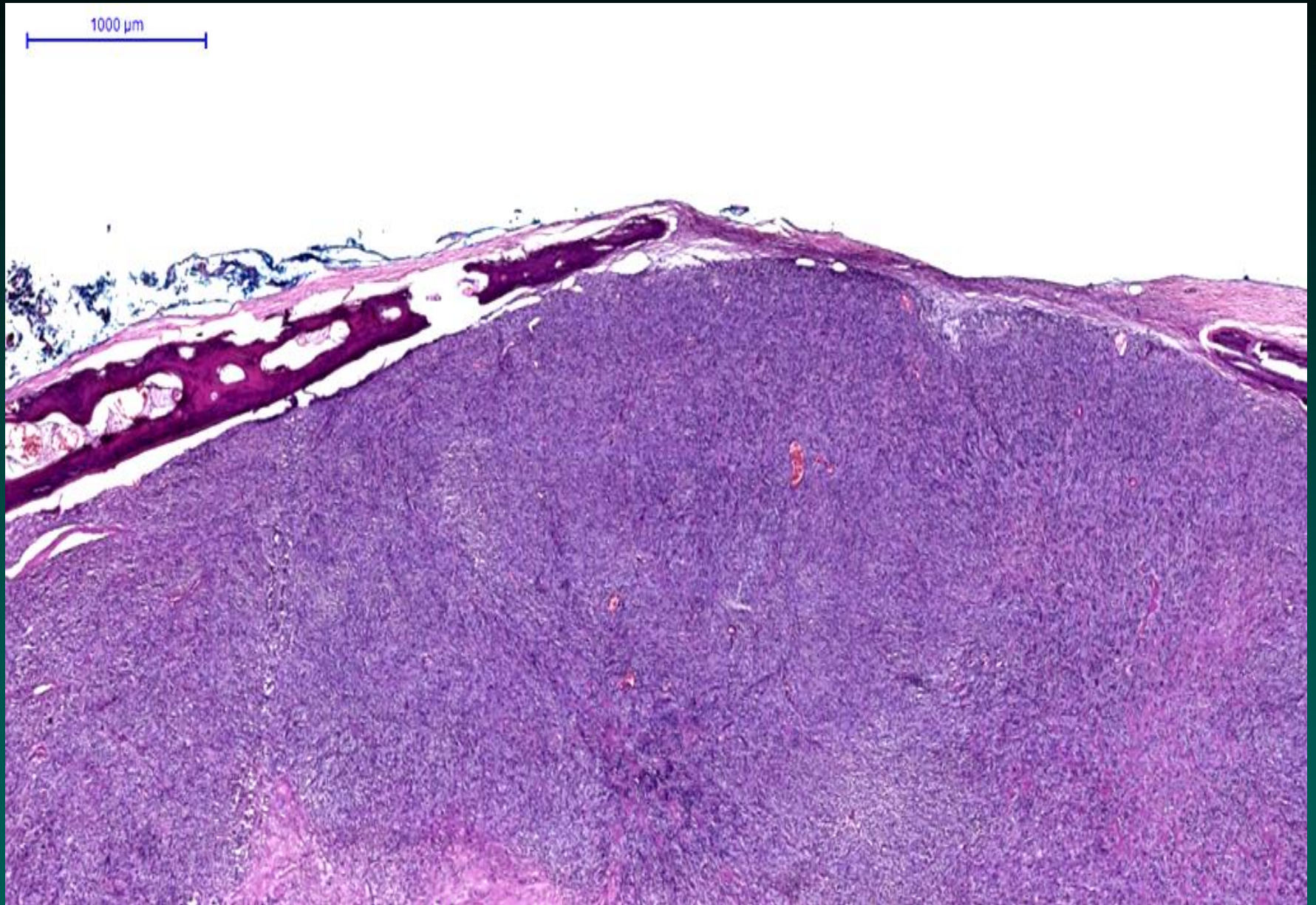
Macroscopia

- Nódulo de 15g e 3,5 x 3,0 x 2,5 cm.
- Contornos regulares, branco e endurecido.
- Aos cortes: superfície branca, compacta e com pontos marrons.

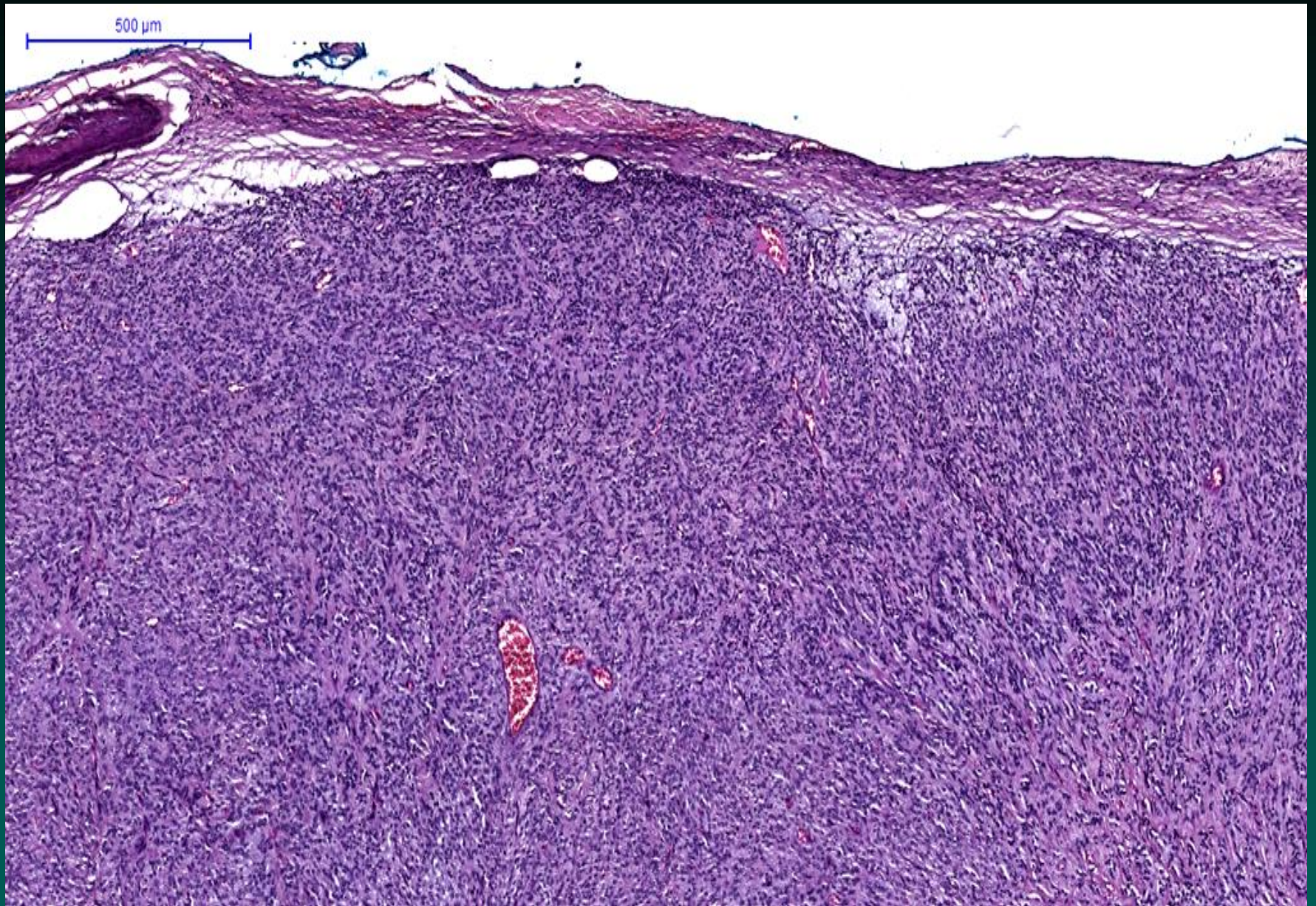
5000 μm



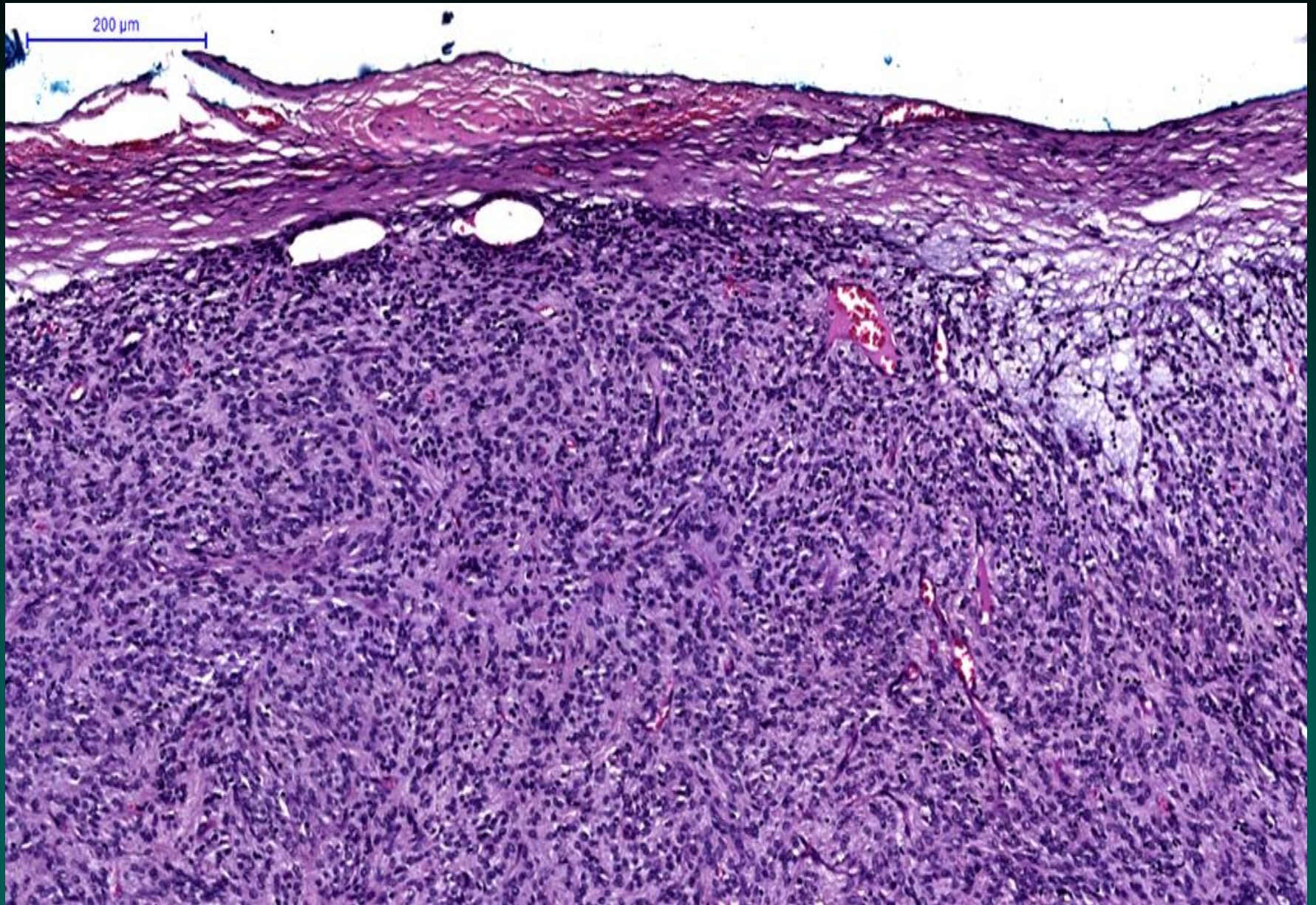
HE Panorâmica



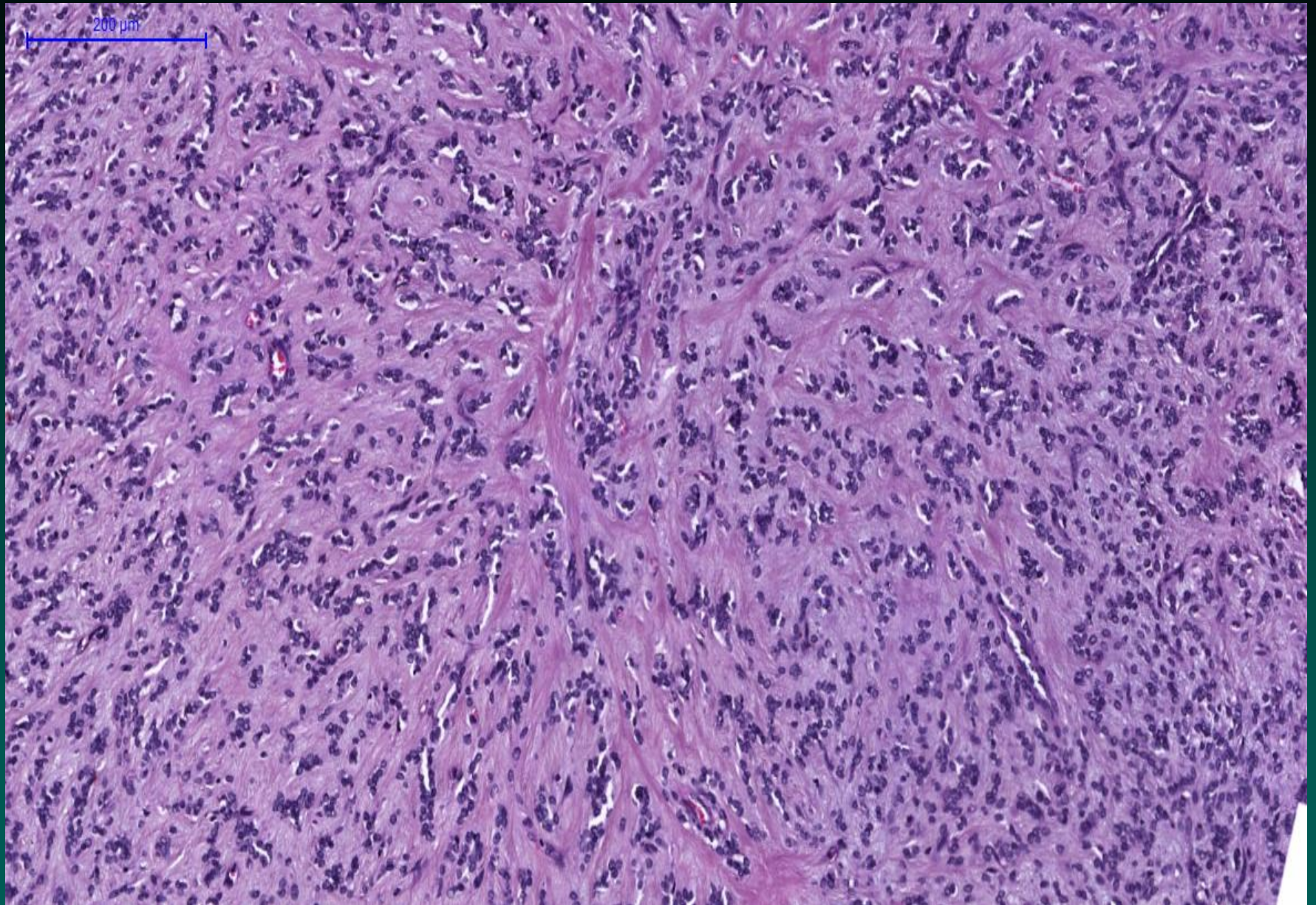
HE Objetiva 2x



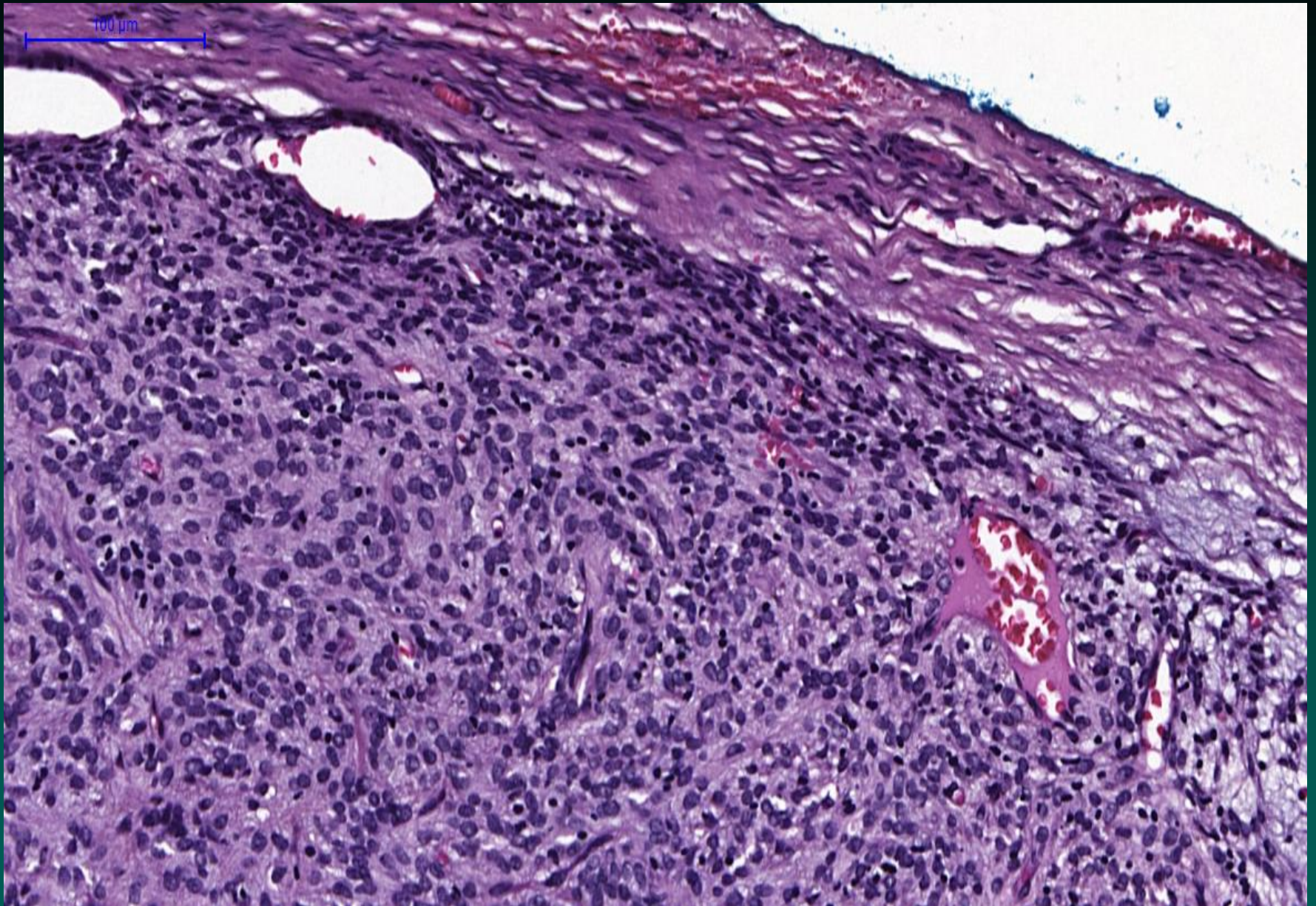
HE Objetiva 5x



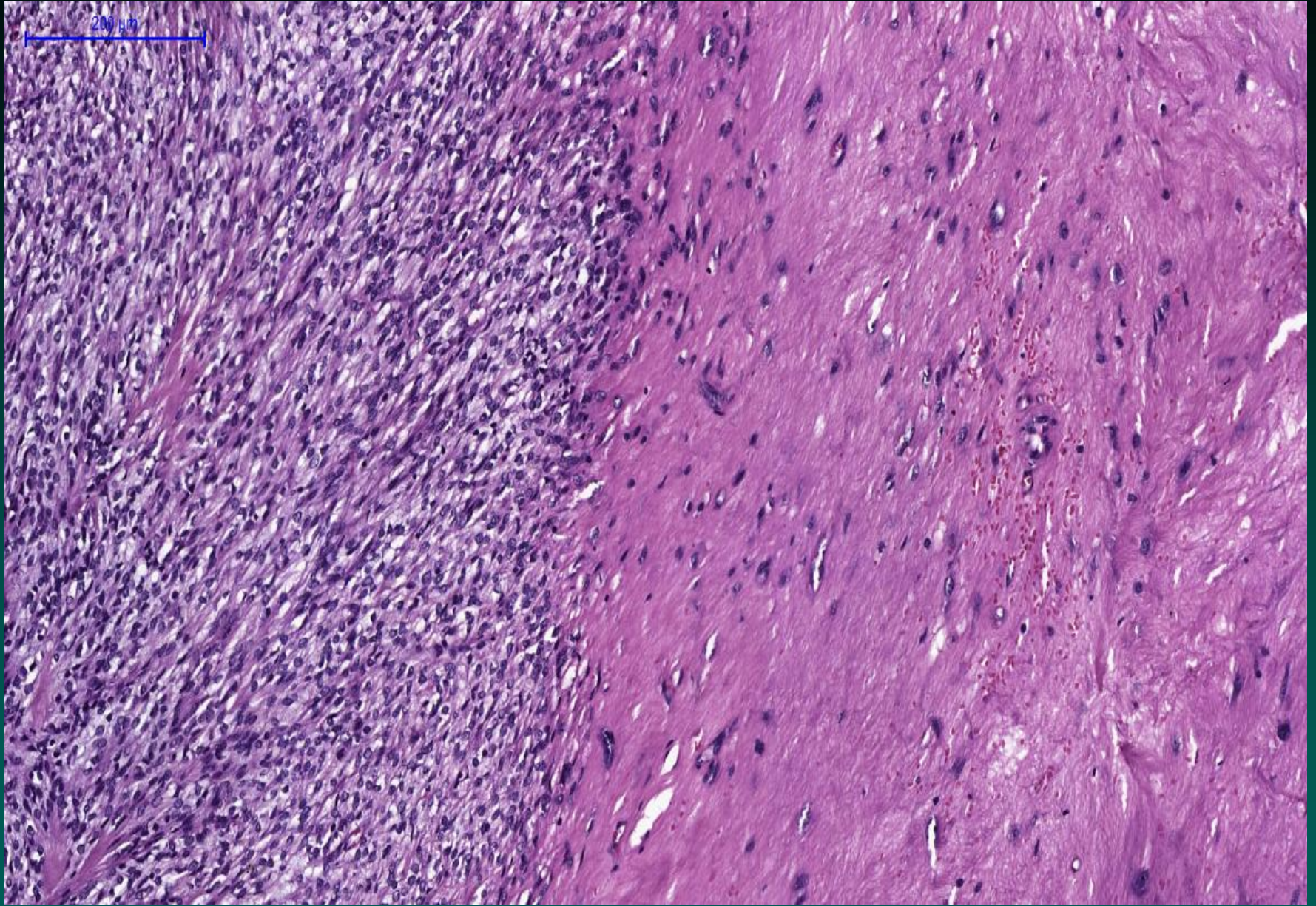
HE Objetiva 10x



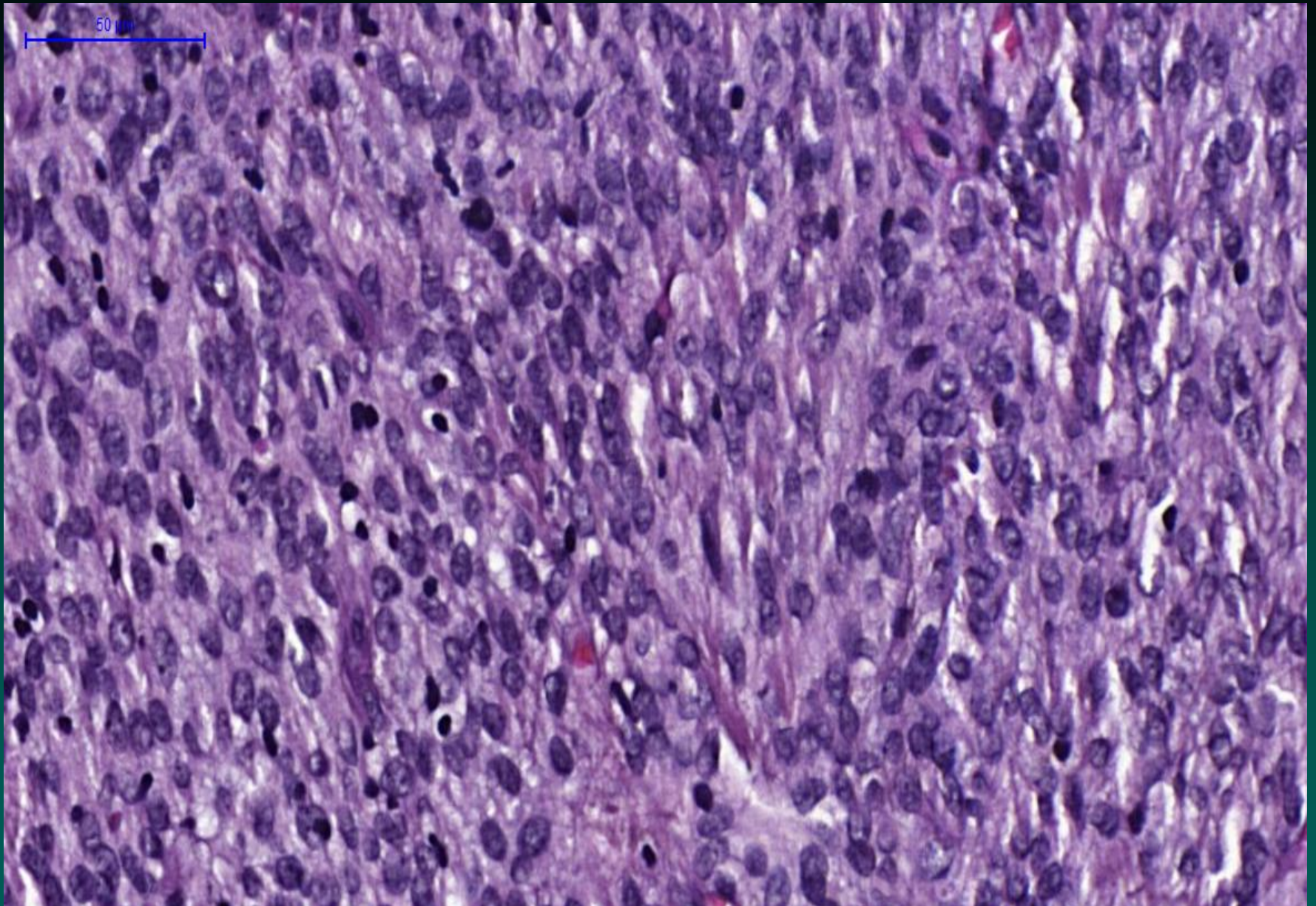
HE Objetiva 10x



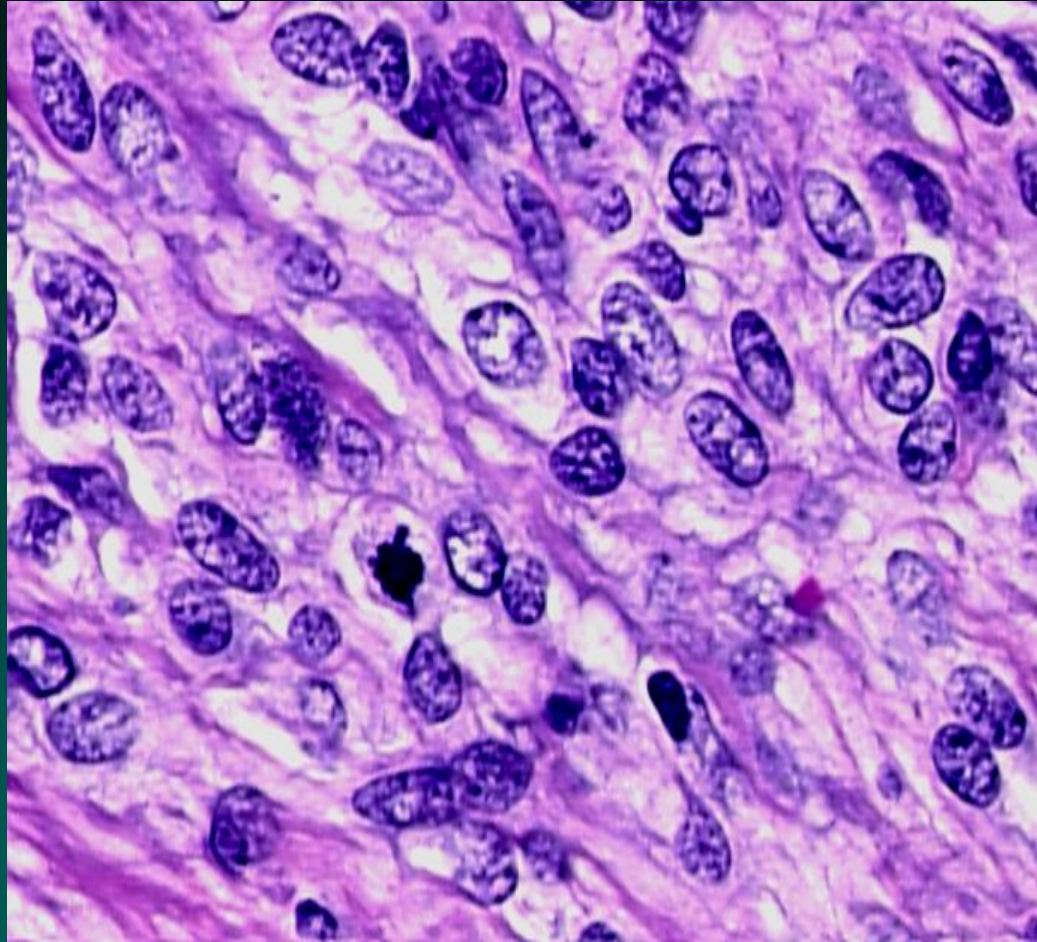
HE Objetiva 20x



HE Objetiva 20x



HE Objetiva 40x



**Com base nos achados
morfológicos, qual o seu
diagnóstico?**



Sociedade Brasileira de Patologia