



Sociedade Brasileira de Patologia



Reunião APESP - 25 de abril 2015

R3 Vinícius Zanin

Patologia – UNESP - Botucatu

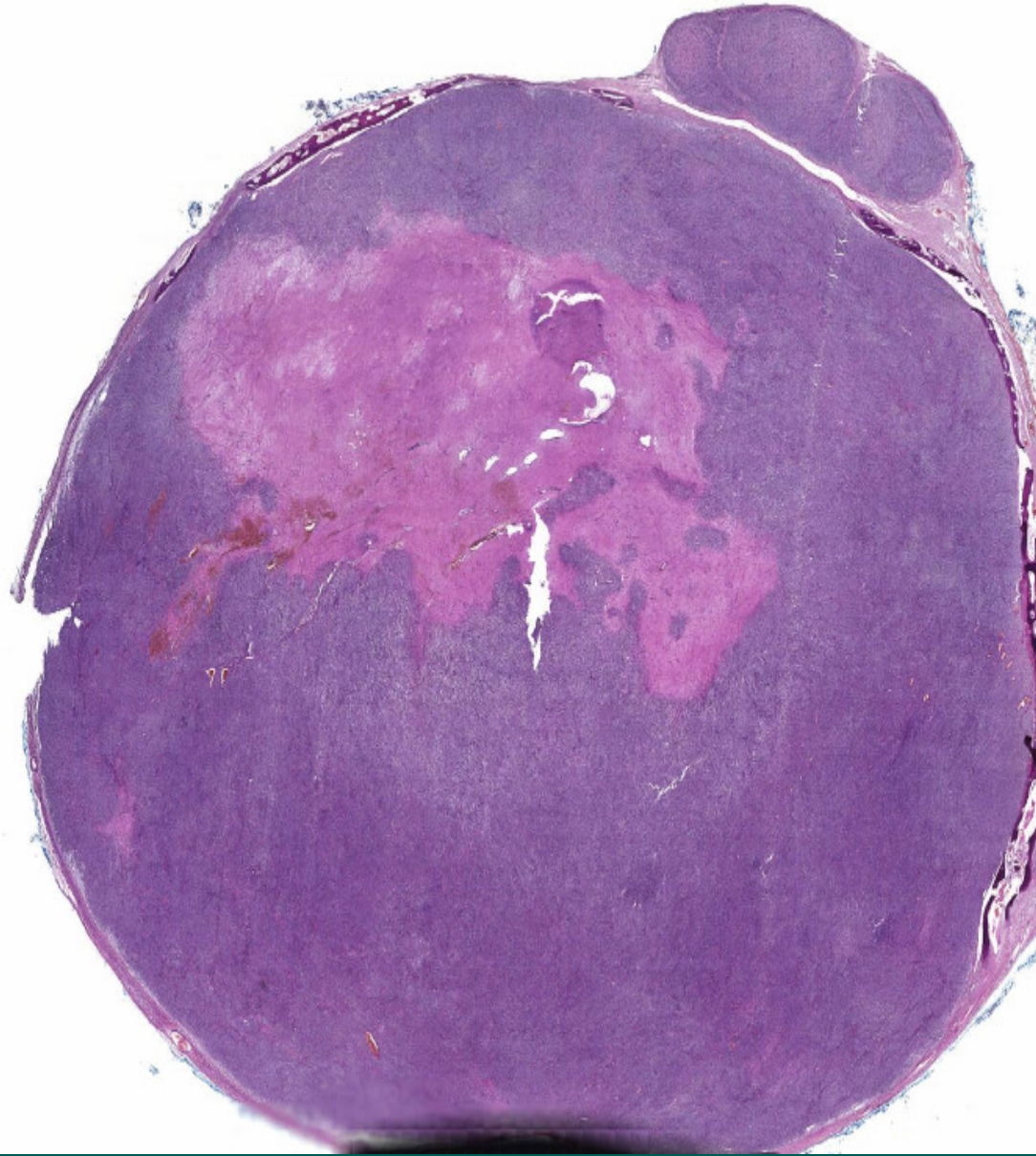
B8911/2014

- Mulher, 26 anos
- Nódulo 5,0 cm diâmetro, não aderido e endurecido na região deltoidea direita.
- HD: Pilomatrixoma

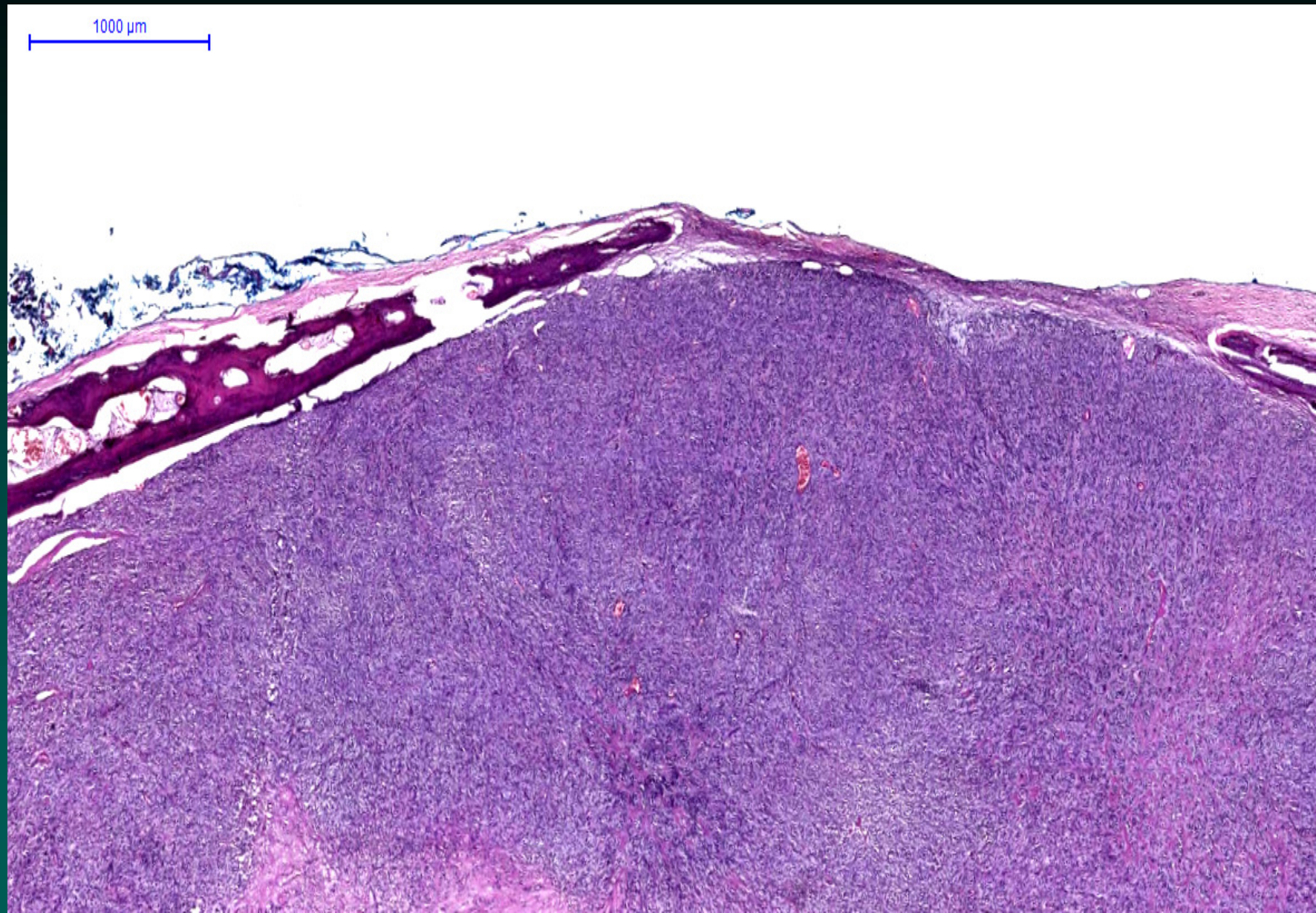
Macroscopia

- Nódulo de 15g e 3,5 x 3,0 x 2,5 cm.
- Contornos regulares, branco e endurecido.
- Aos cortes: superfície branca, compacta e com pontos marrons.

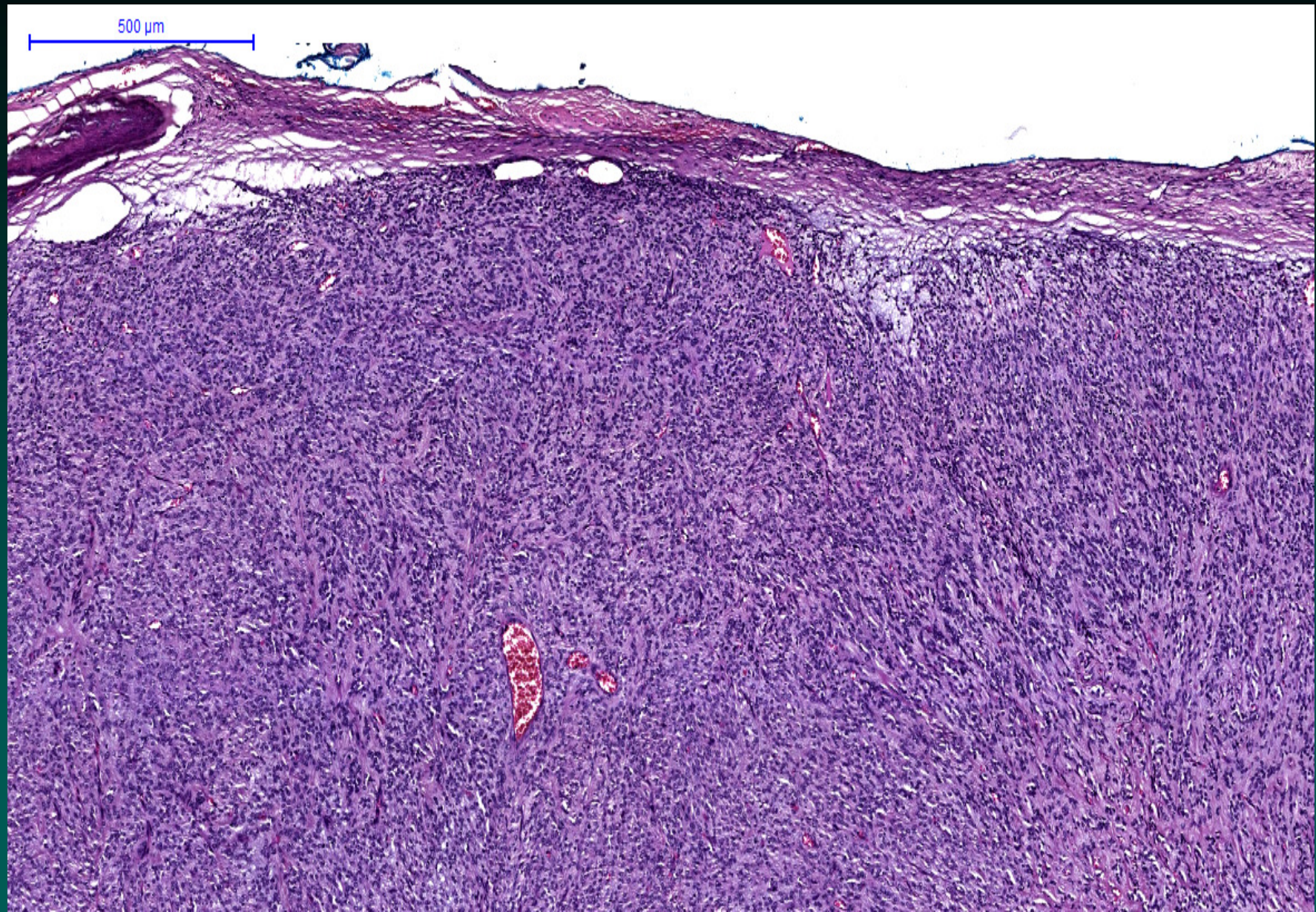
5000 μ m



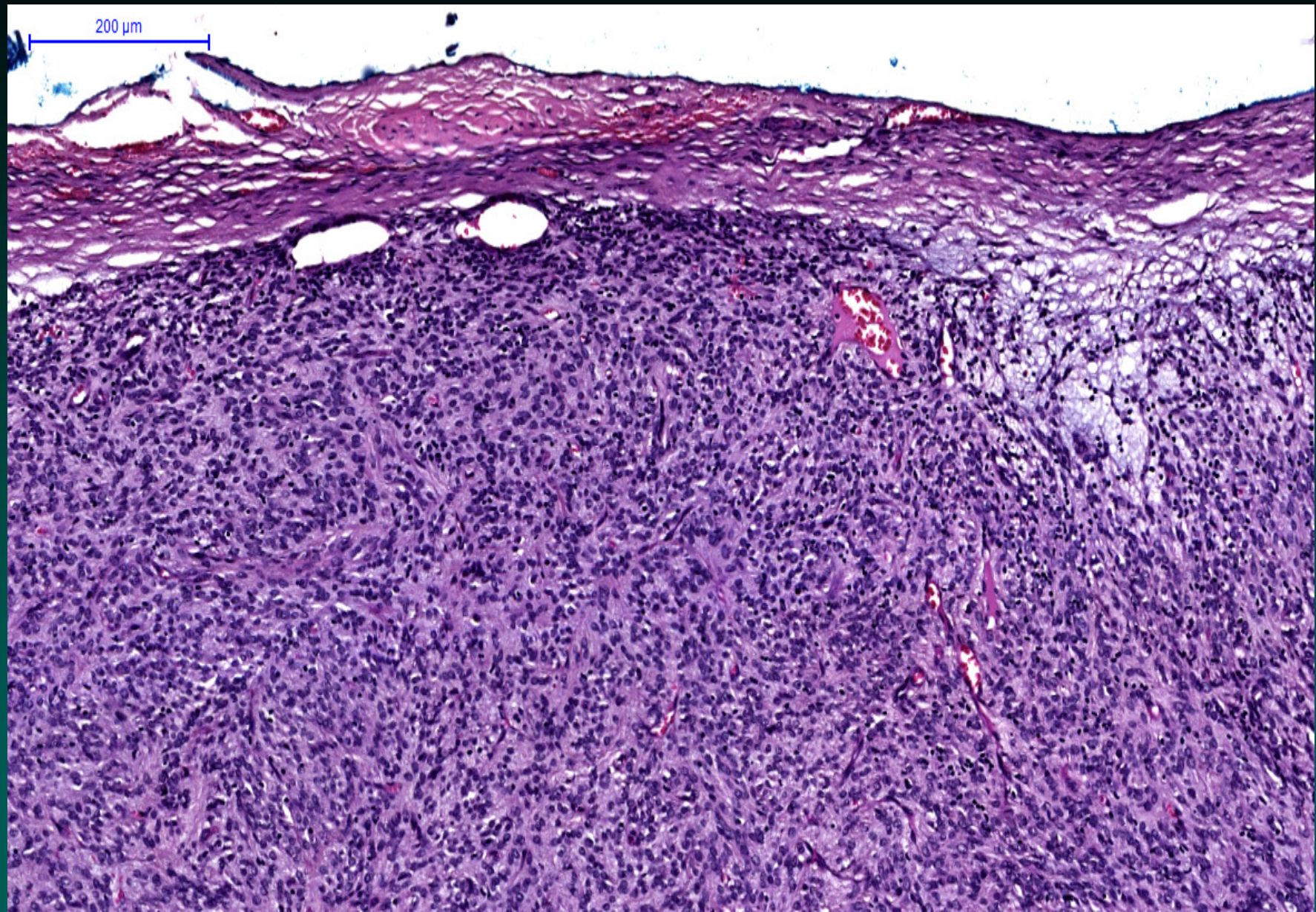
HE Panorâmica



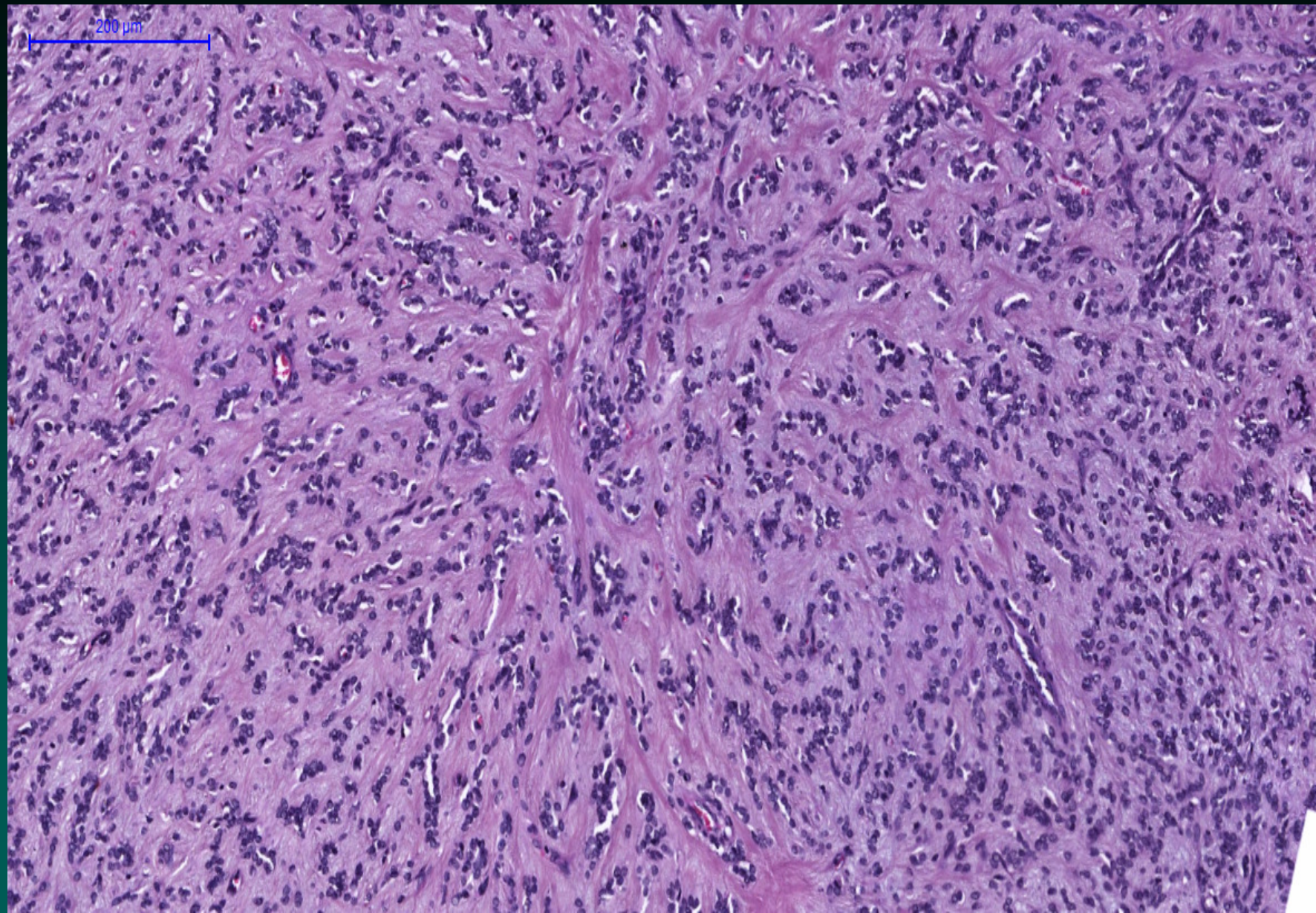
HE Objetiva 2x



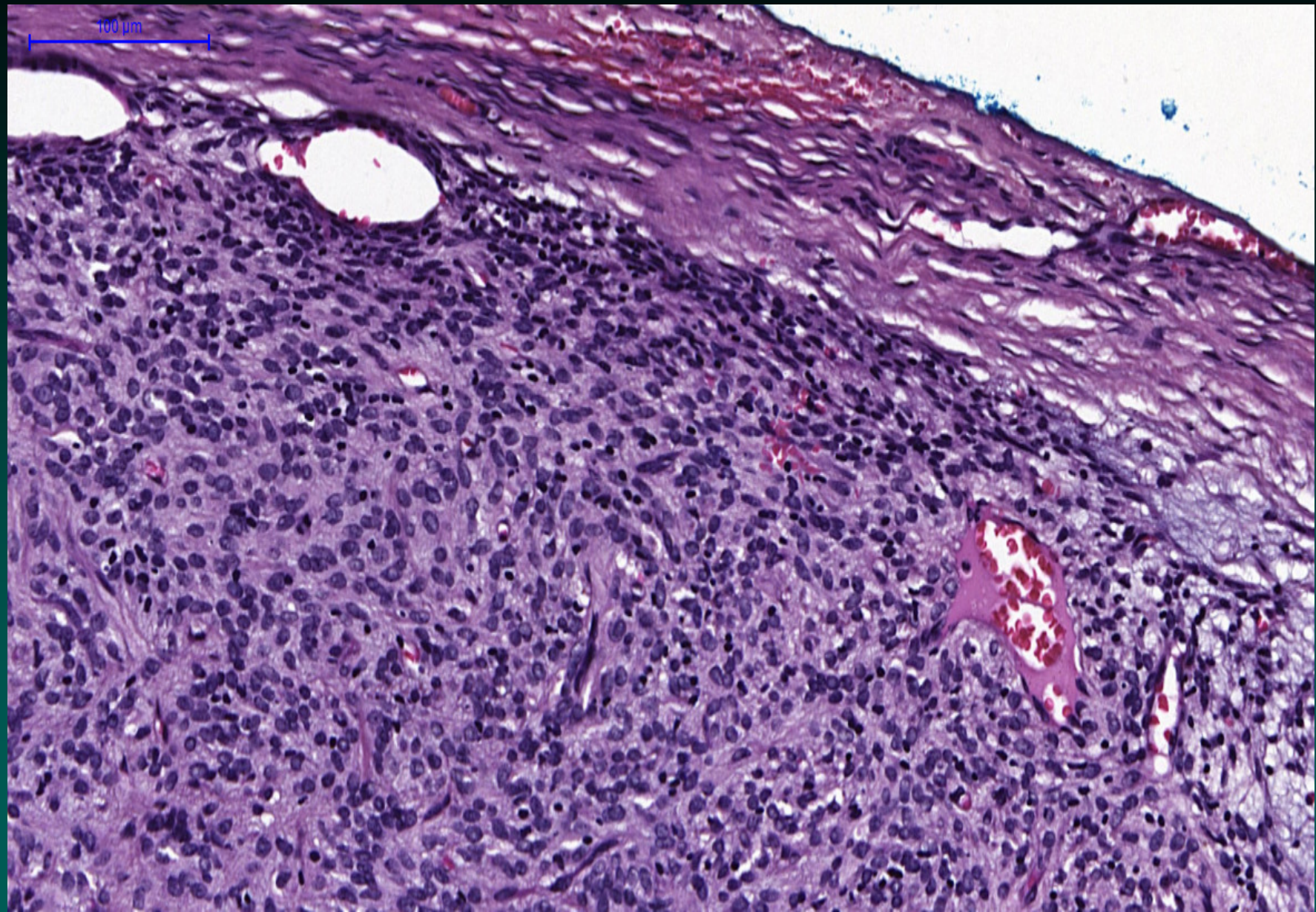
HE Objetiva 5x



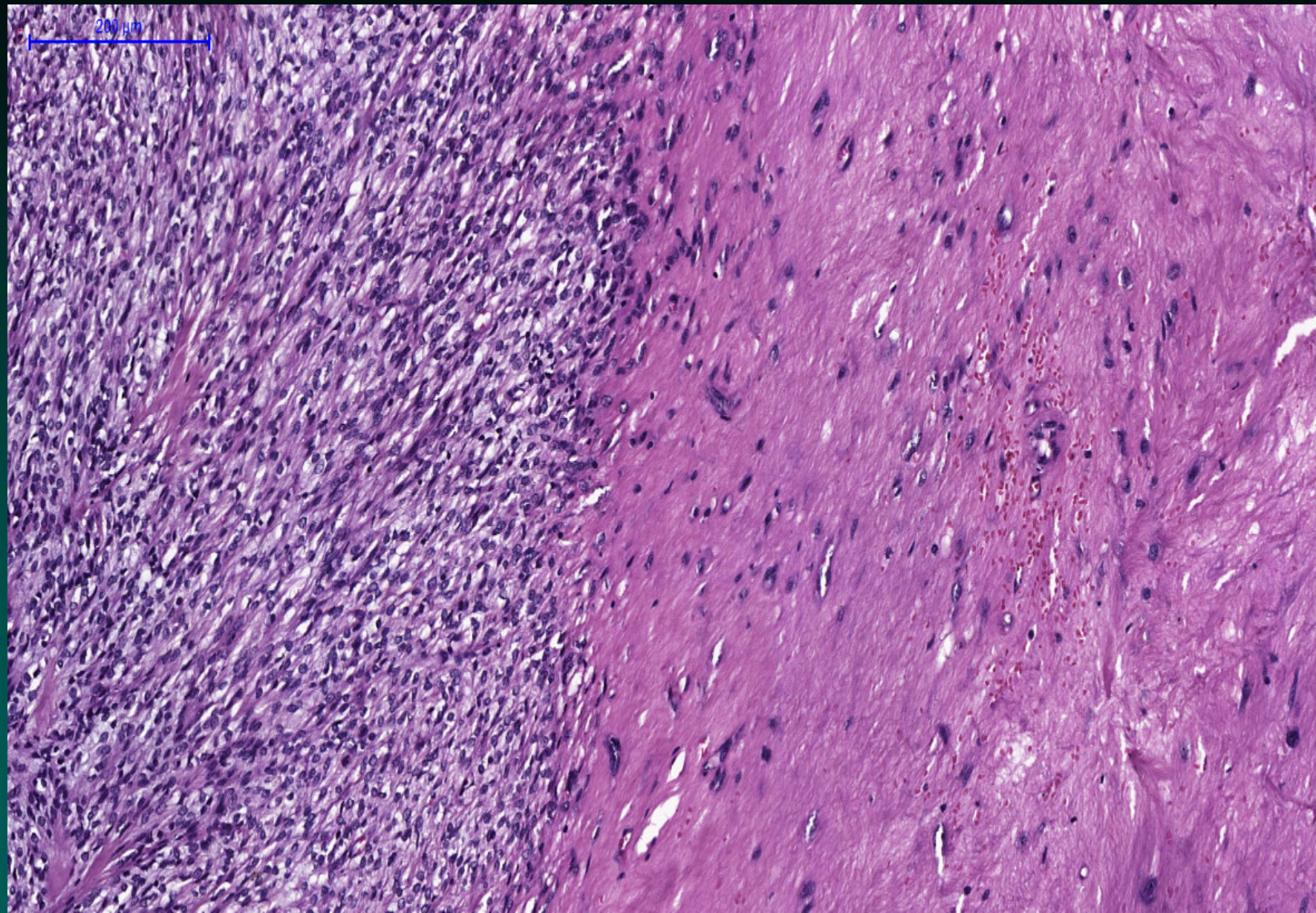
HE Objetiva 10x



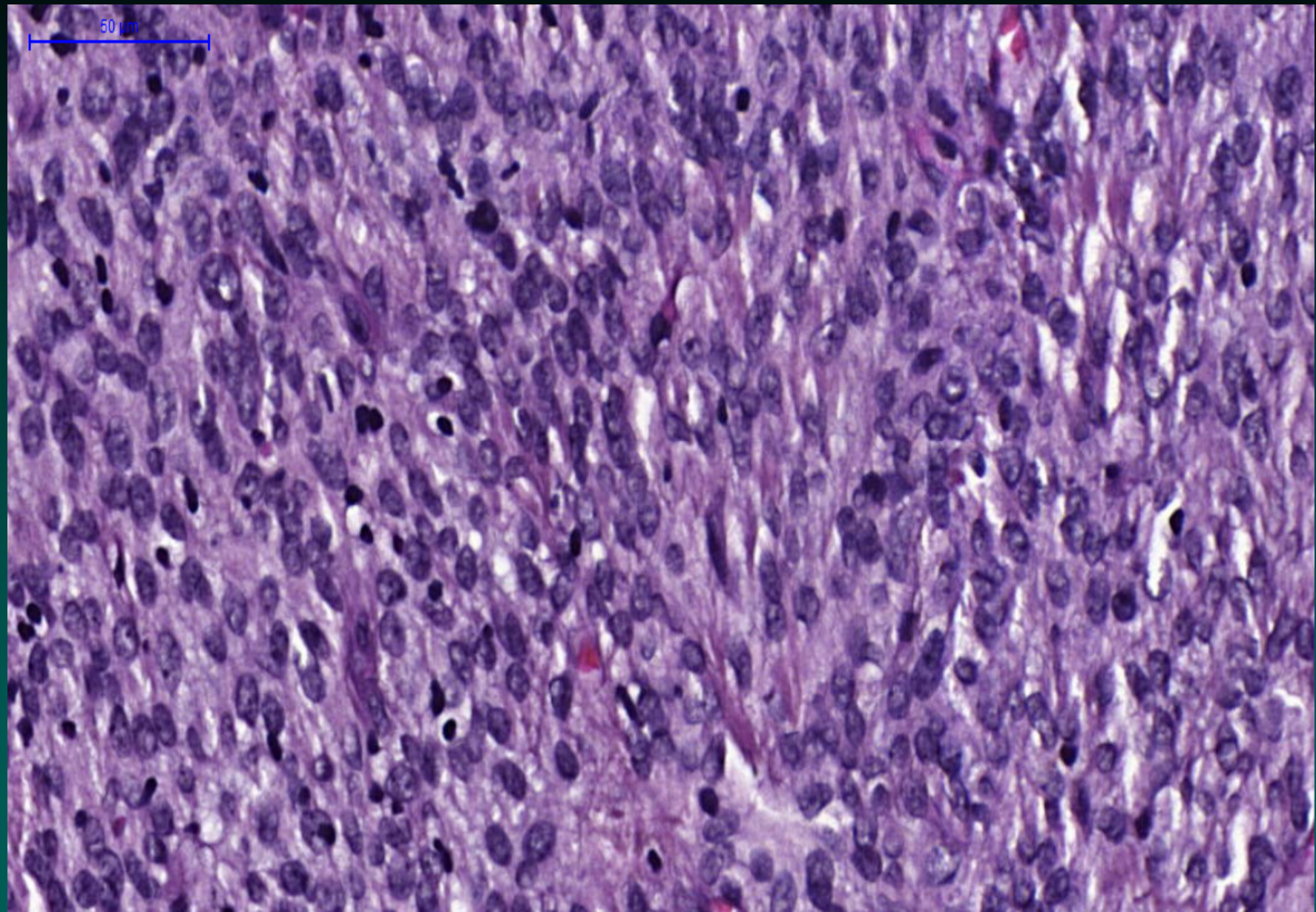
HE Objetiva 10x



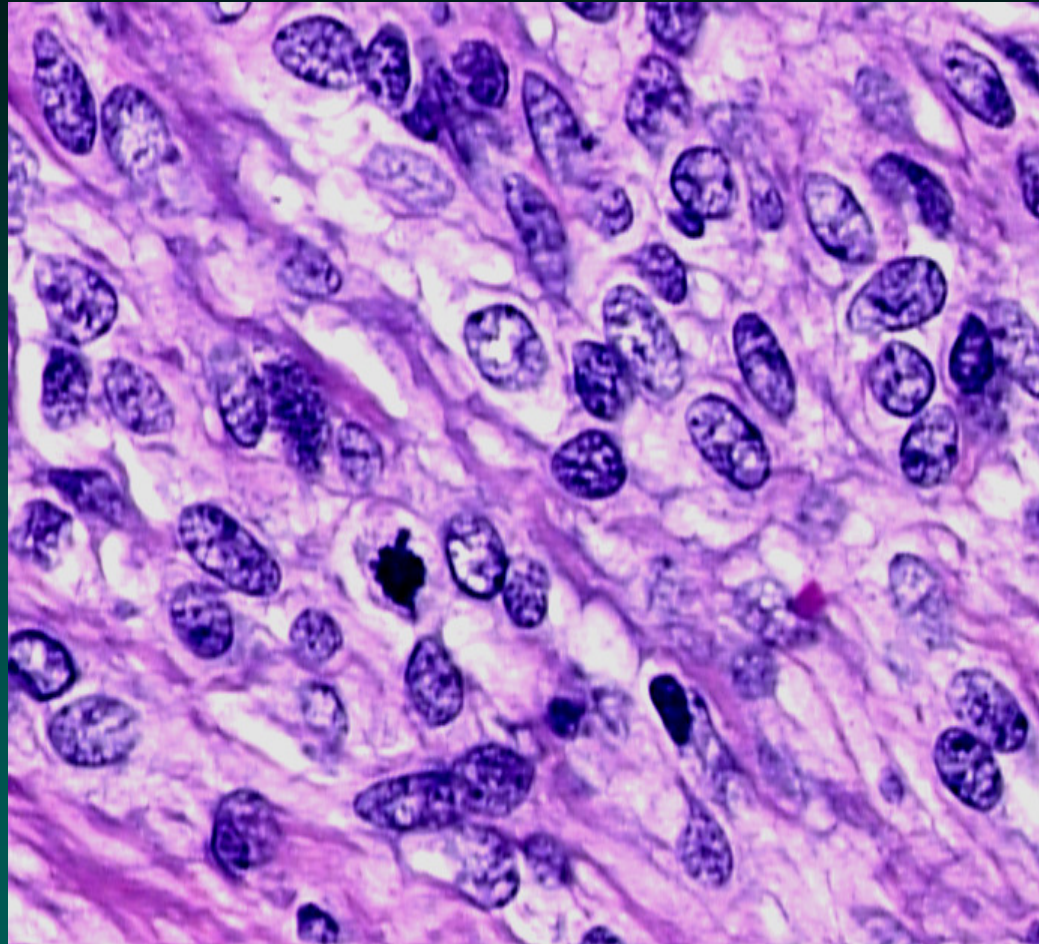
HE Objetiva 20x



HE Objetiva 20x



HE Objetiva 40x





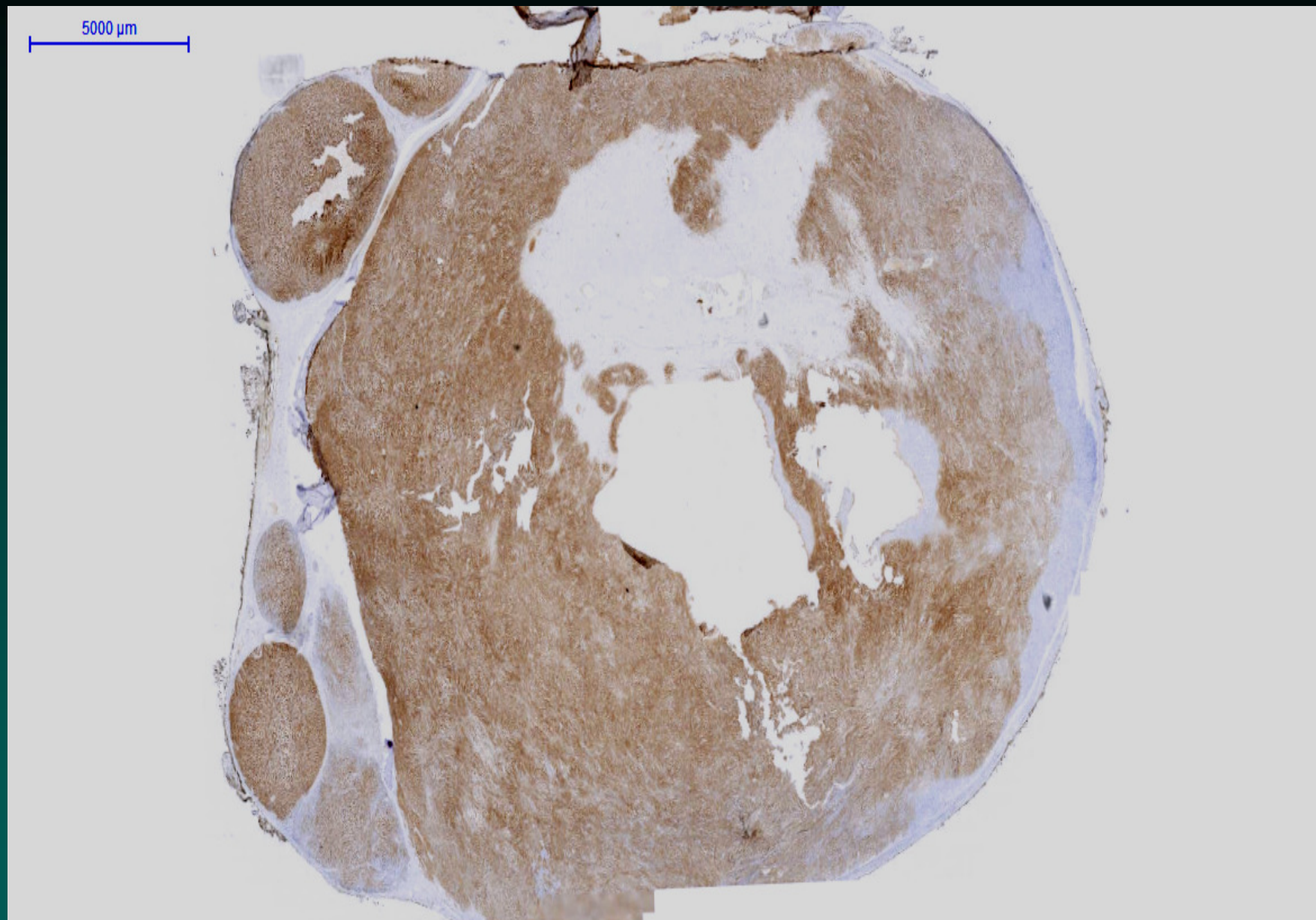
Sociedade Brasileira de Patologia

**Com base nos achados
morfológicos, qual o seu
diagnóstico?**

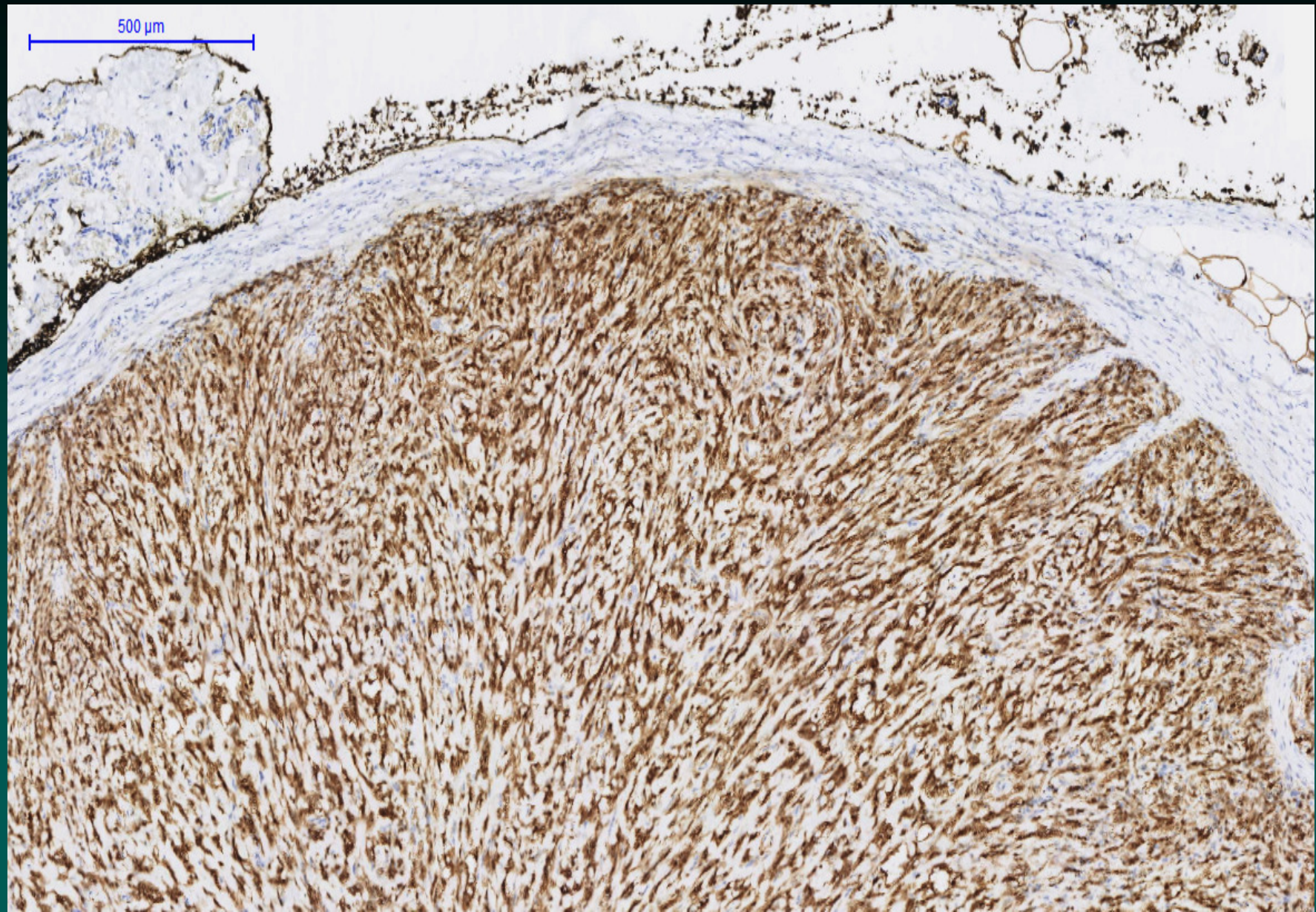


Sociedade Brasileira de Patologia

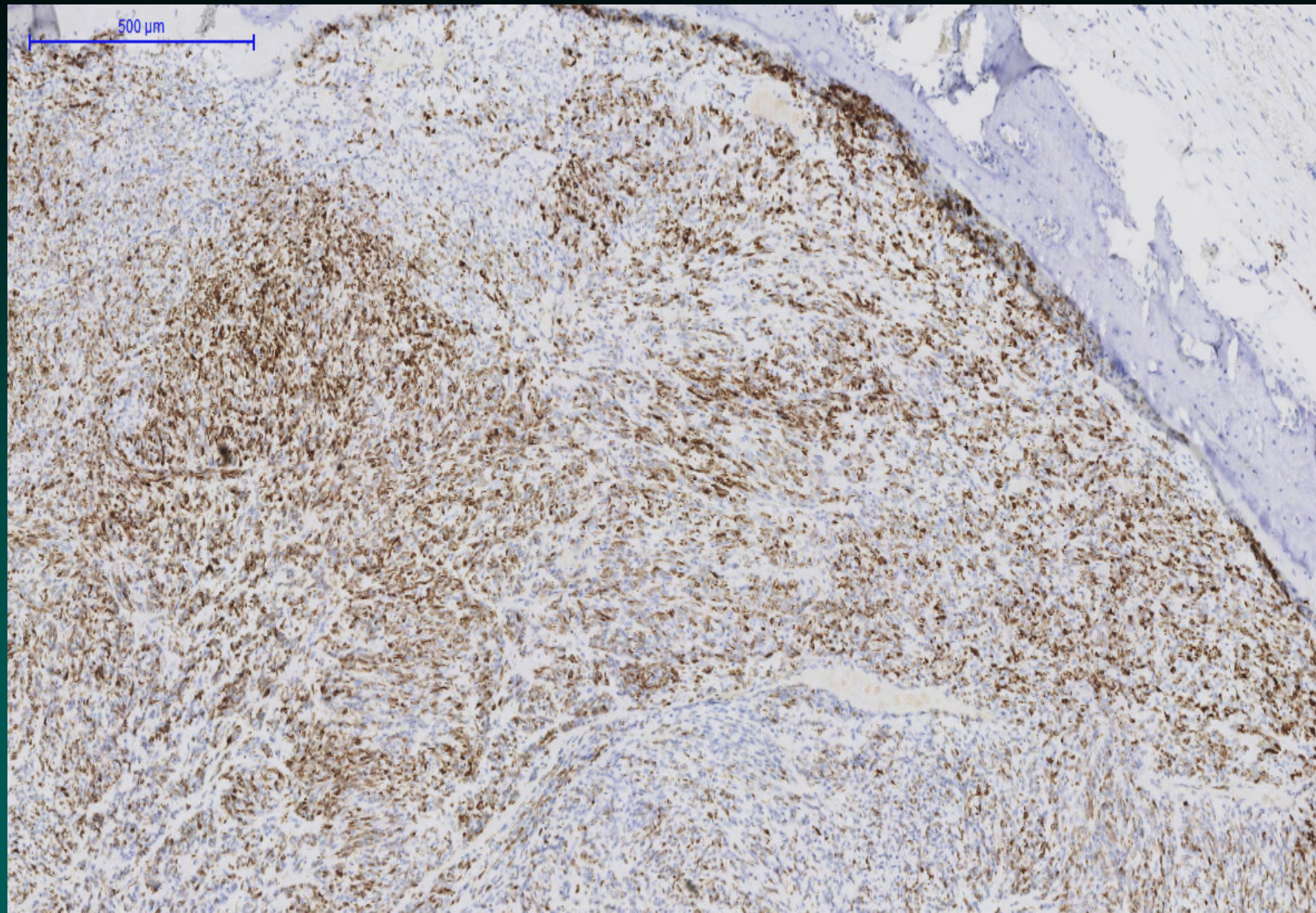
Estudo imunoistoquímico



S100 Panorâmica



S100 Objetiva 5x



Desmina Objetiva 5x



Sociedade Brasileira de Patologia

Diagnóstico final:

Tumor fibromixoide ossificante

Ossifying Fibromyxoid Tumor of Soft Parts

A Clinicopathological Analysis of 59 Cases

Franz M. Enzinger, M.D., Sharon W. Weiss, M.D., and
Chang Y. Liang, M.D.

- Tumor de células redondas a ovais em estroma fibromixóide.
- Padrão trabecular ou em ninhos.
- Cápsula incompleta podendo apresentar ossificação metaplásica.

The American Journal of Surgical Pathology 27(4): 421-431, 2003

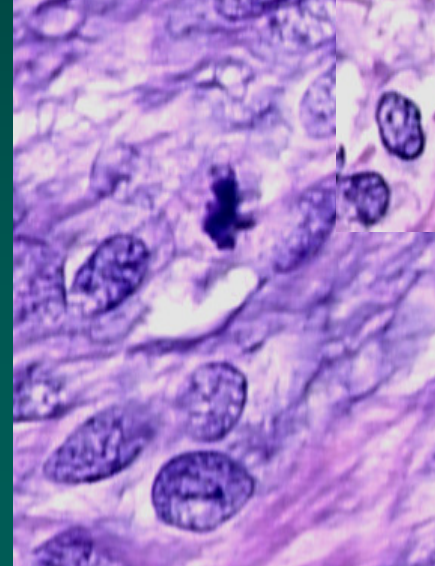
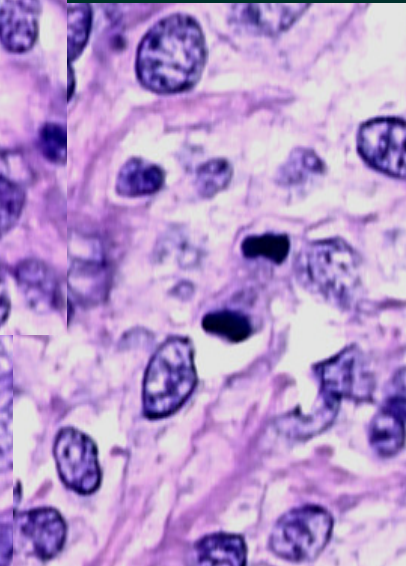
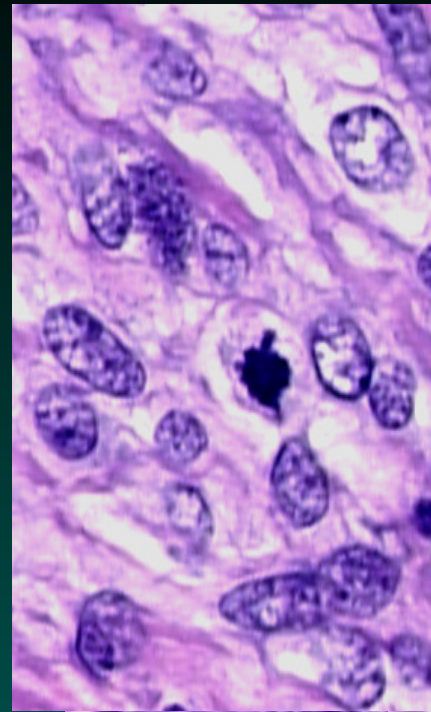
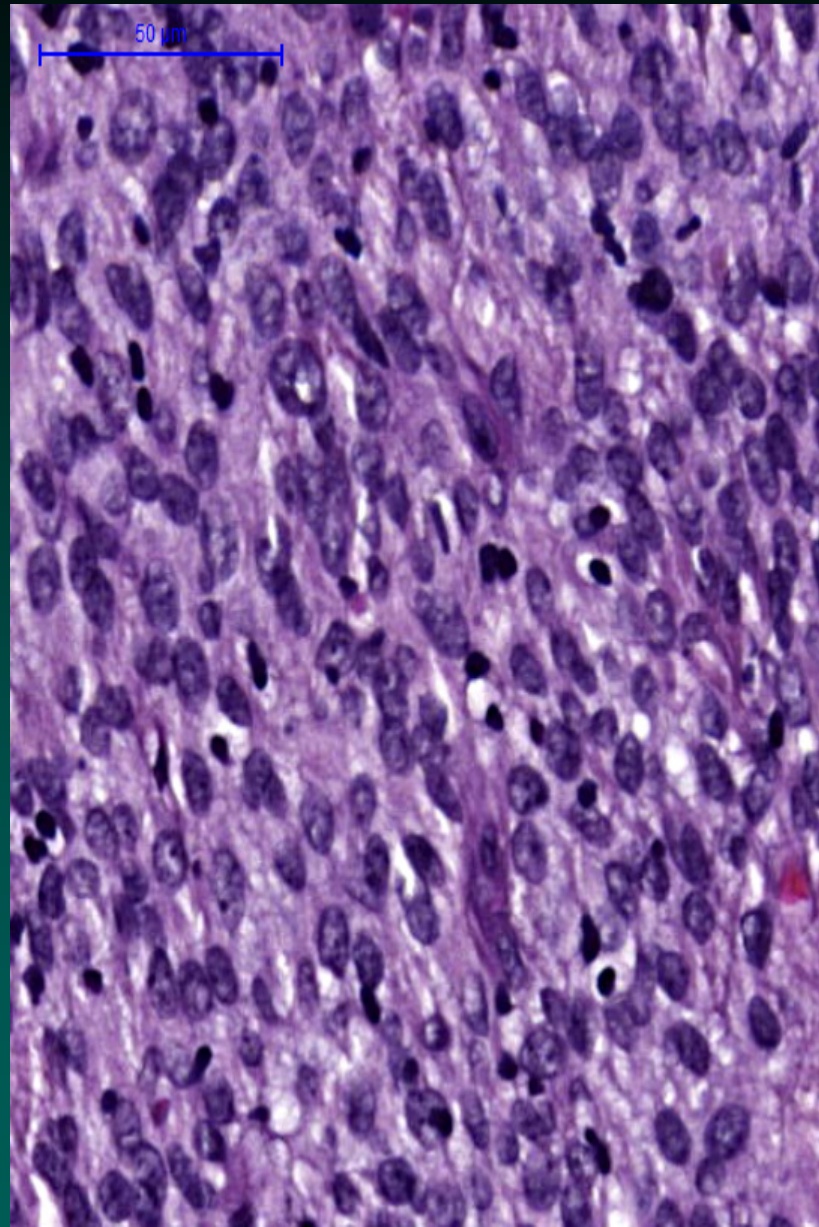
Ossifying Fibromyxoid Tumor of Soft Parts

A Clinicopathologic Study of 70 Cases With Emphasis on Atypical and Malignant Variants

Andrew L. Folpe, M.D., and Sharon W. Weiss, M.D.

TABLE 32-2 Proposed Classification of Ossifying Fibromyxoid Tumors

DIAGNOSTIC CRITERIA	
Typical OFMT	Low nuclear grade and low cellularity with mitotic activity <2 MF/50 HPF
Atypical OFMT	Tumors deviating from typical OFMT but not meeting criteria for malignant OFMT
Malignant OFMT	High nuclear grade or high cellularity and mitotic activity >2 MF/50 HPF



Ossifying Fibromyxoid Tumor of Soft Parts—
A Clinicopathologic and Immunohistochemical Study
of 104 Cases With Long-term Follow-up and
a Critical Review of the Literature

Markku Miettinen, MD, Val Finnell, MD, and John F. Fetsch, MD

- Alto índice mitótico isolado não prediz recorrência e metástase
- Alto grau nuclear: principal fator preditivo de recorrência e metástase
- Não classificou nenhum caso como atípico (critérios muito “generosos”)

Tumorigenesis and Neoplastic Progression

Recurrent Rearrangement of the *PHF1* Gene in Ossifying Fibromyxoid Tumors

Samuel Gebre-Medhin,* Karolin H. Nord,*
Emely Möller,* Nils Mandahl,* Linda Magnusson,*
Jenny Nilsson,* Vickie Y. Jo,†
Fredrik Vult von Steyern,‡ Otte Brosjö,§
Olle Larsson,¶ Henryk A. Domanski,|| Raf Sciot,**
Maria Debiec-Rychter,†† Christopher D.M. Fletcher,†

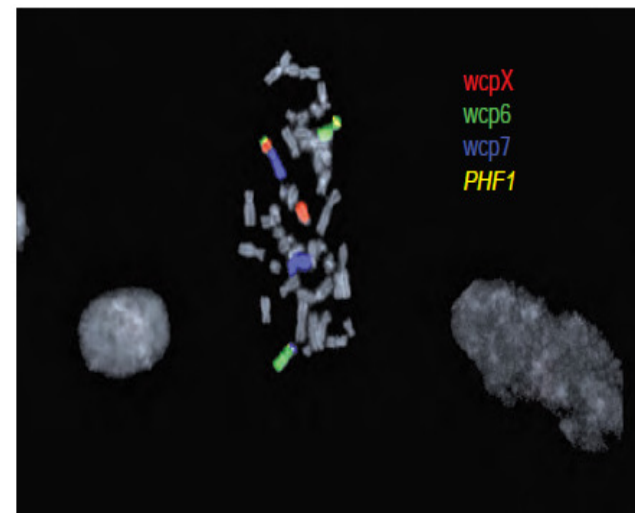


FIGURE 32-15. Break-apart FISH in a case of malignant ossifying fibromyxoid tumor, demonstrating *PHF1* rearrangement.

Referências

1. ENZINGER, F. M.; WEISS, S. W.; LIANG, C. Y. Ossifying Fibromyxoid Tumor of Soft Parts: A Clinicopathological Analysis of 59 Cases. **The American Journal of Surgical Pathology**, v. 13, n. 10, 1989.
2. FOLPE, A. L.; WEISS, S. W. Ossifying fibromyxoid tumor of soft parts: a clinicopathologic study of 70 cases with emphasis on atypical and malignant variants. **The American journal of surgical pathology**, v. 27, n. 4, p. 421–431, 2003.
3. GEBRE-MEDHIN, S. et al. Recurrent rearrangement of the PHF1 gene in ossifying fibromyxoid tumors. **American Journal of Pathology**, v. 181, n. 3, p. 1069–1077, 2012.
4. GOLDBLUM, J. R.; WEISS, S. W.; FOLPE, A. L. **Enzinger and Weiss's Soft Tissue Tumors**. [s.l.] Elsevier Health Sciences, 2013.
5. GRAHAM, R. P. D. et al. Ossifying Fibromyxoid Tumor of Soft Parts. **The American Journal of Surgical Pathology**, v. 35, n. 11, p. 1615–1625, 2011.
6. MIETTINEN, M.; FINNELL, V.; FETSCH, J. F. Ossifying fibromyxoid tumor of soft parts--a clinicopathologic and immunohistochemical study of 104 cases with long-term follow-up and a critical review of the literature. **The American journal of surgical pathology**, v. 32, n. 7, p. 996–1005, 2008.