



Sociedade Brasileira de Patologia

APESP

A-257

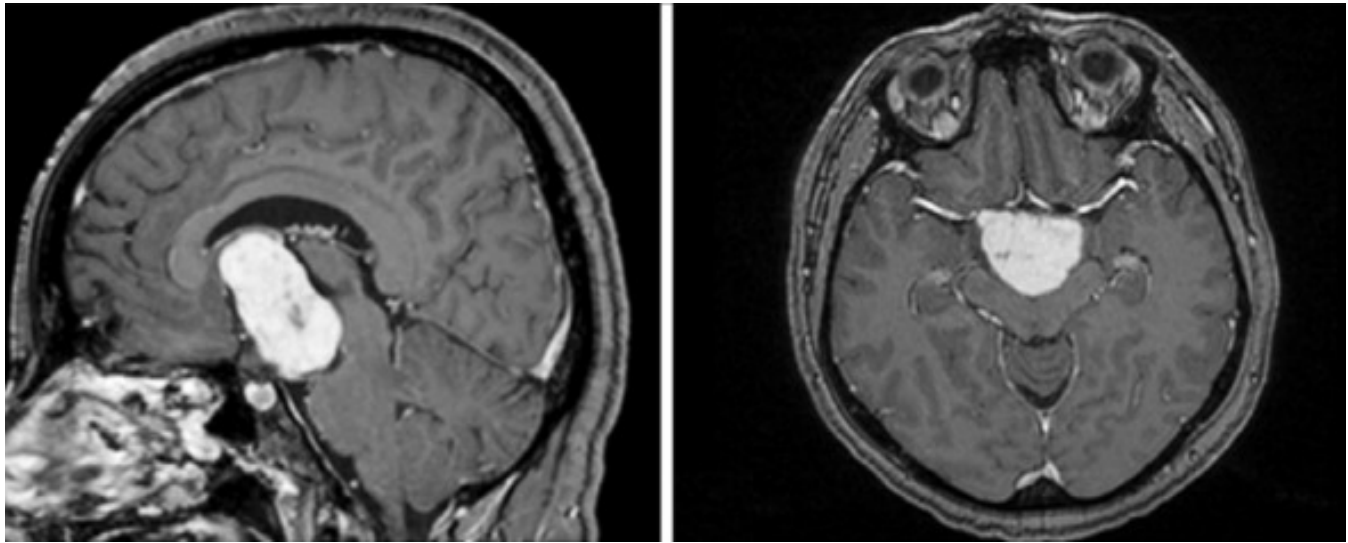
São Paulo

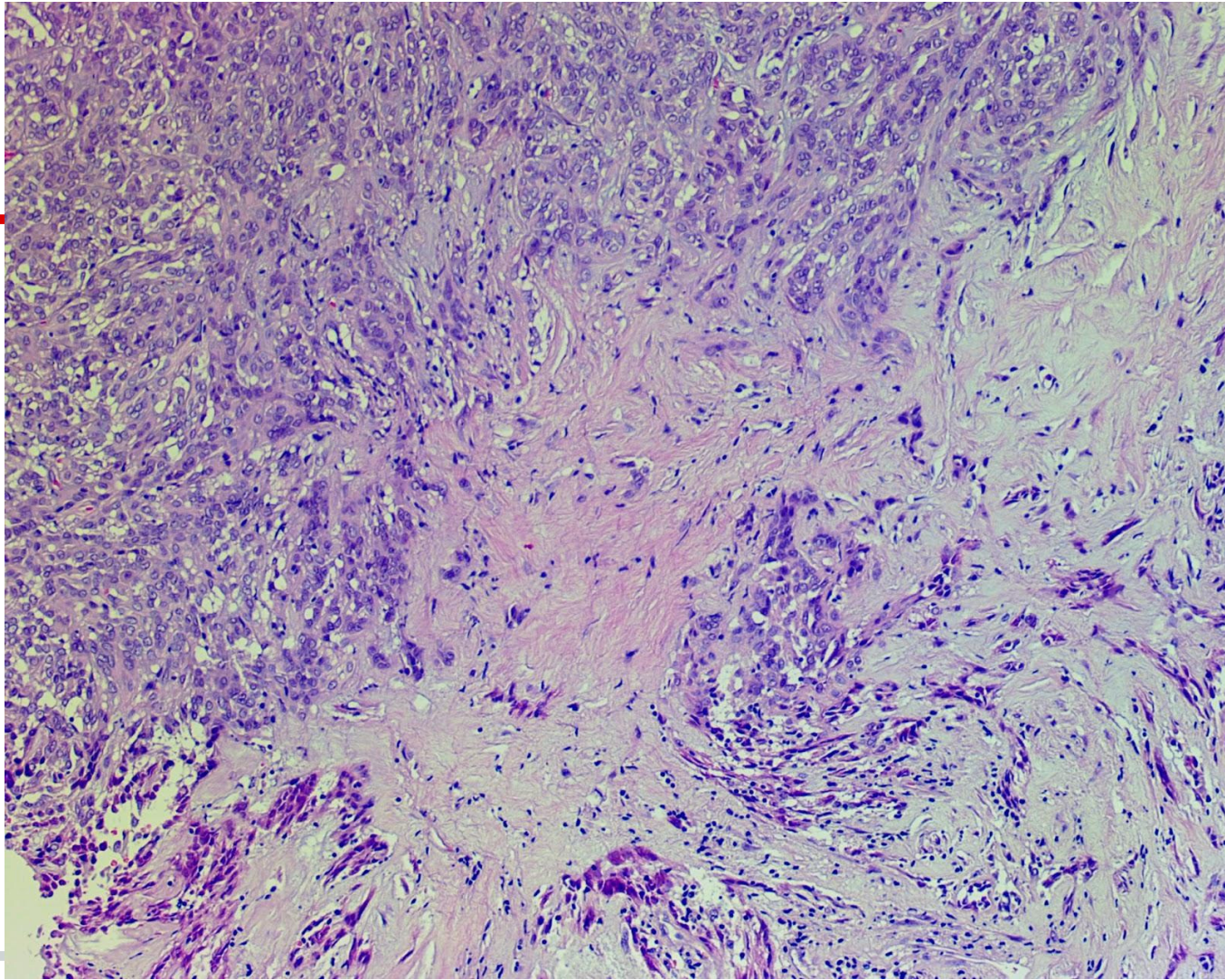
Bernardo Bacelar

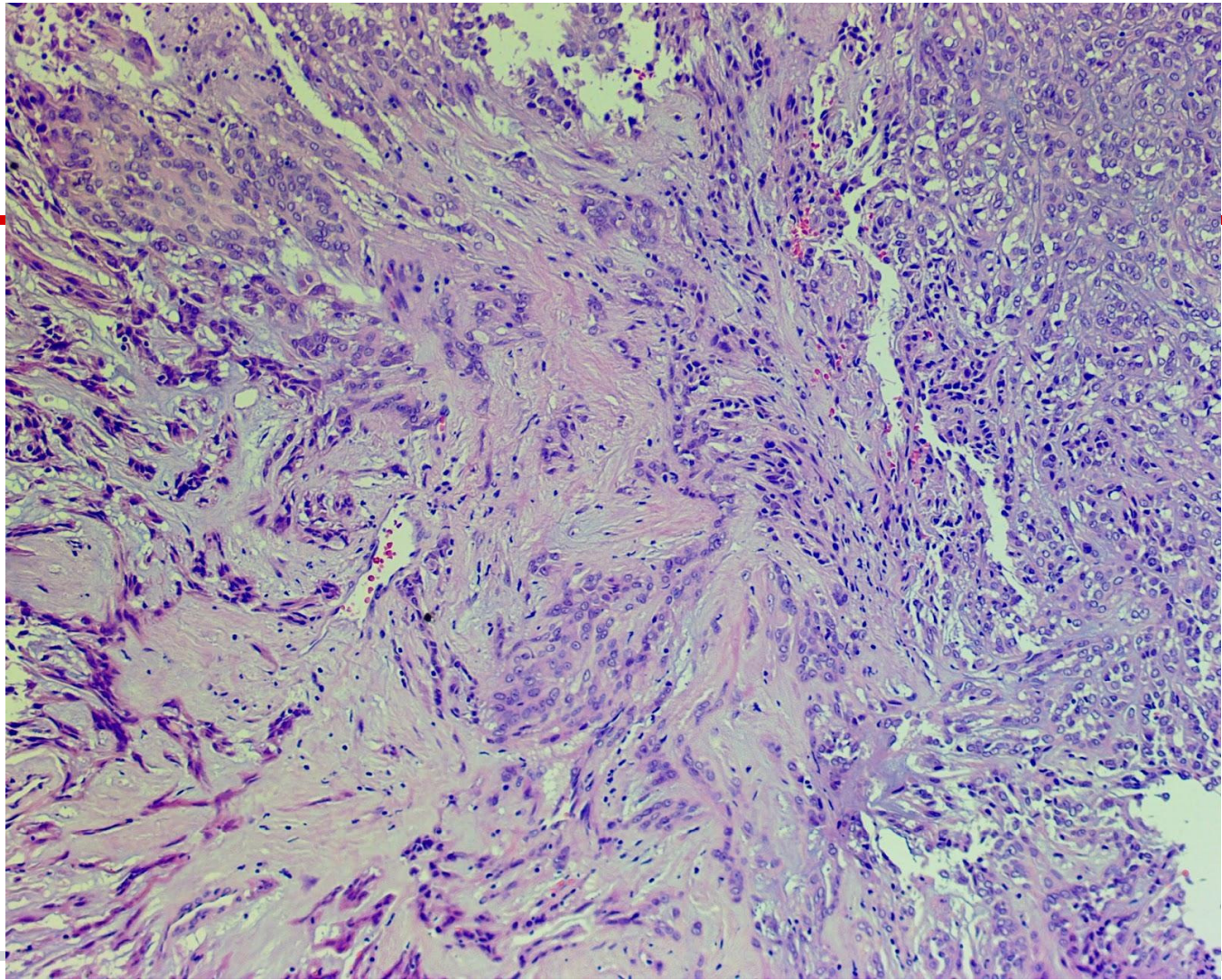
SALOMÃO ZOPPI
DIAGNÓSTICOS

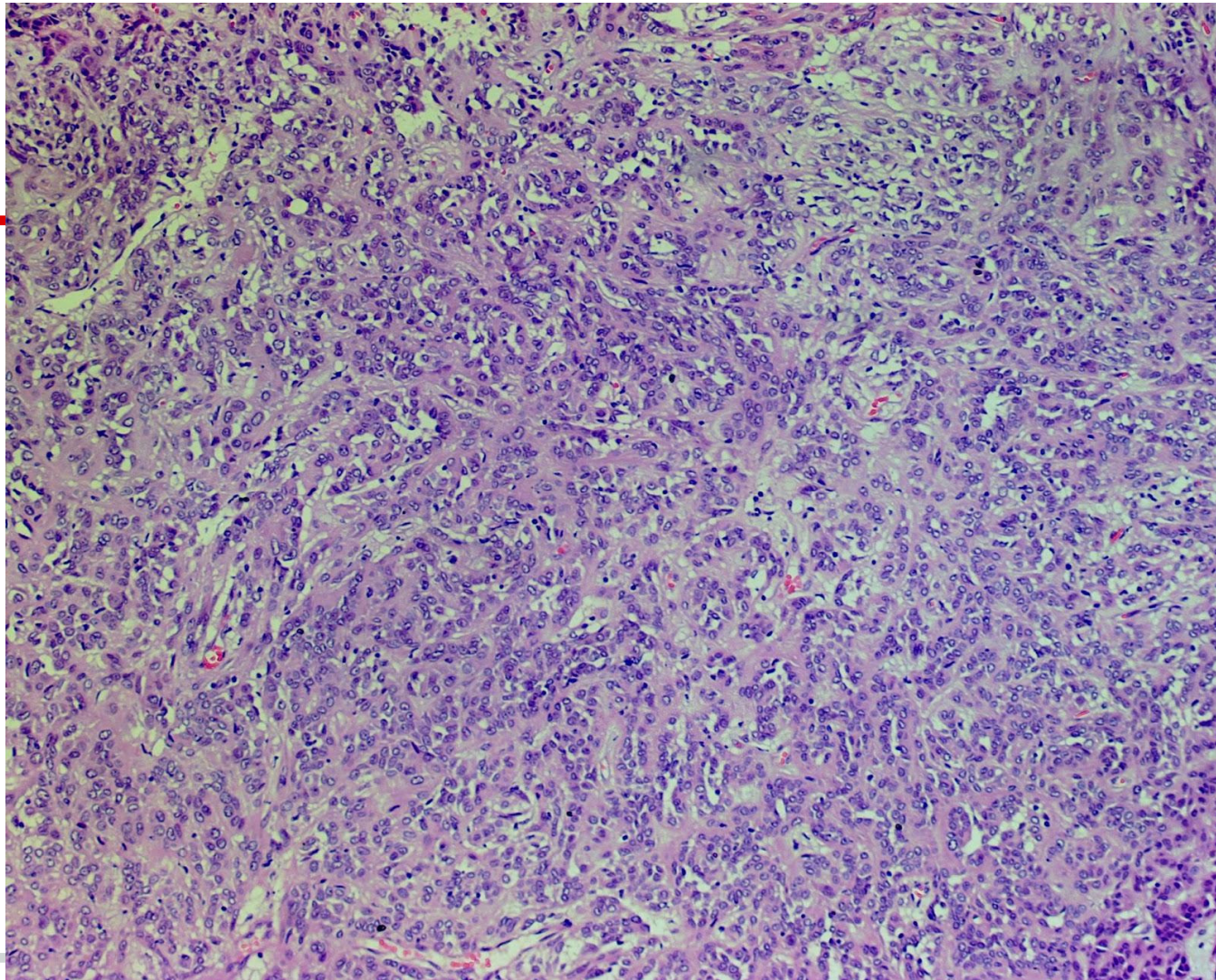
- Homem 35 anos.

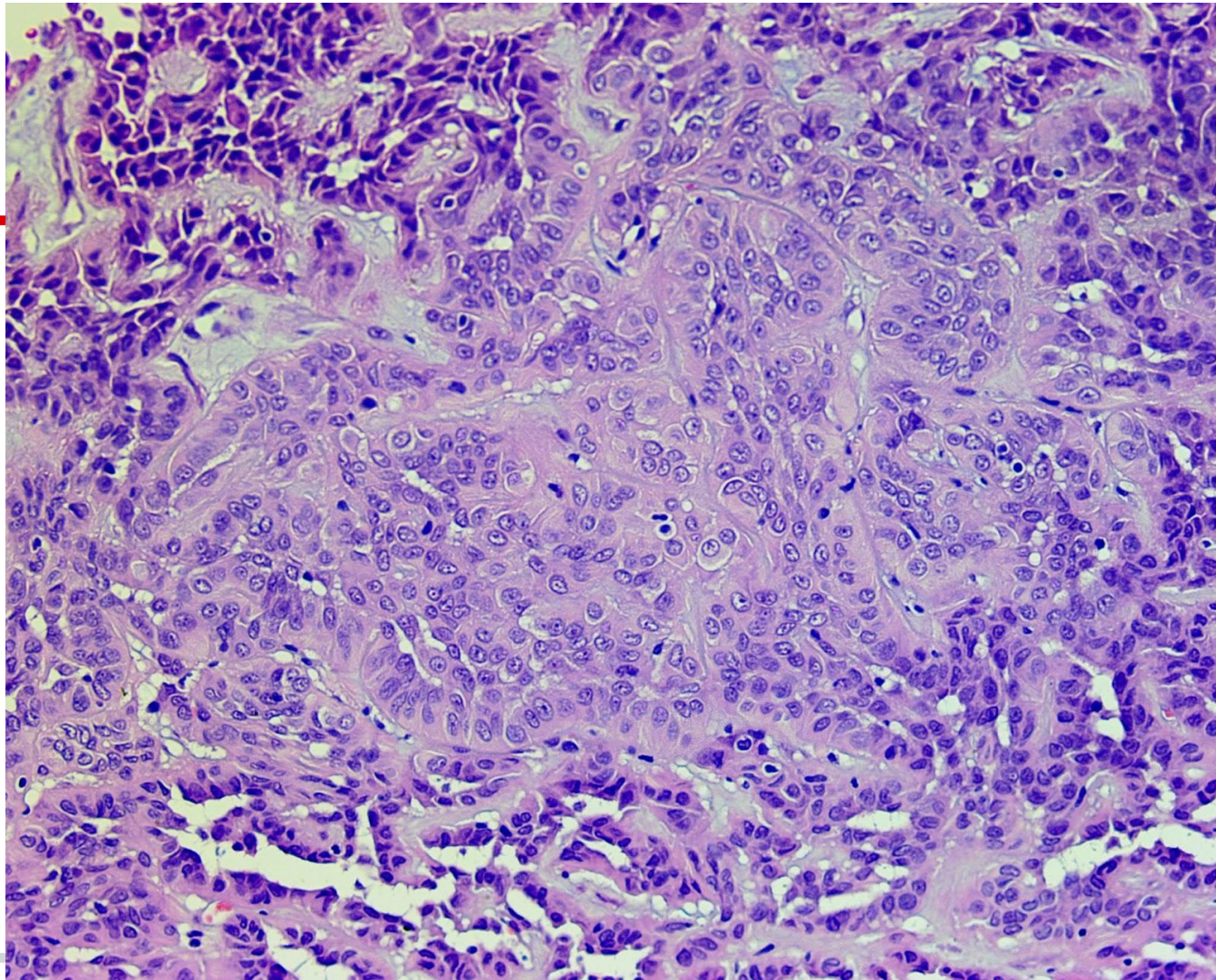
- Cefaléia e tumoração hipotalâmica com hipercaptação de contraste.

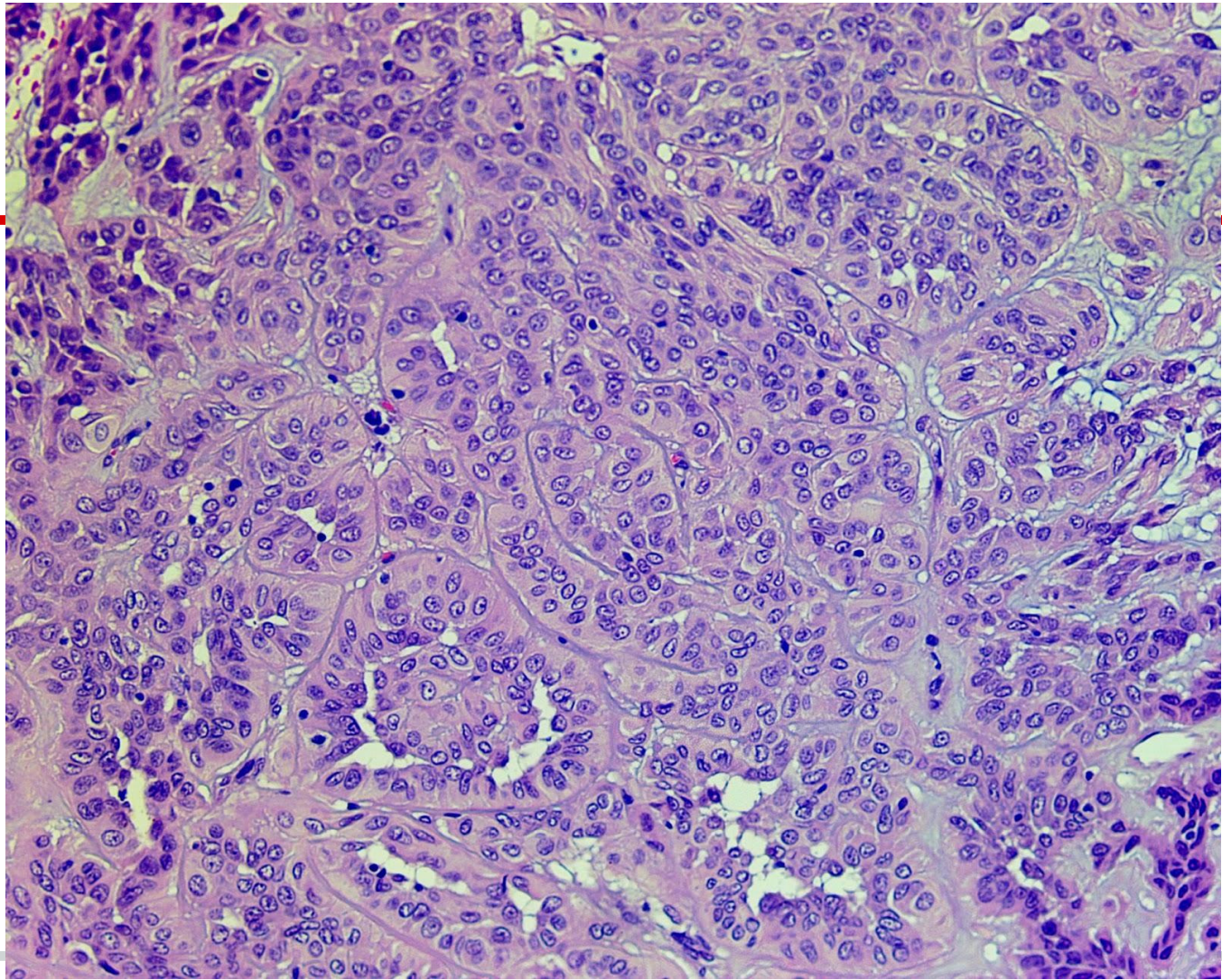


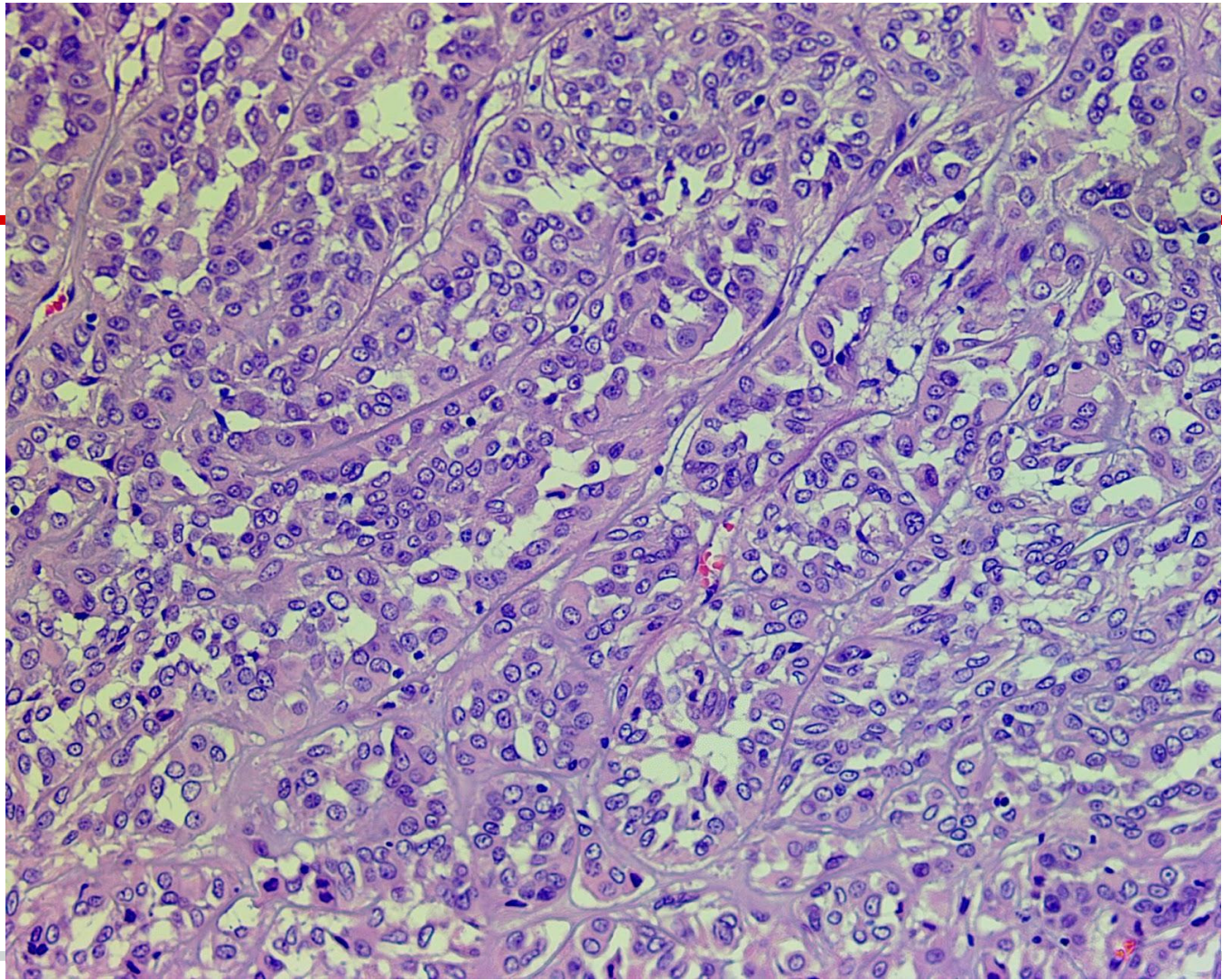


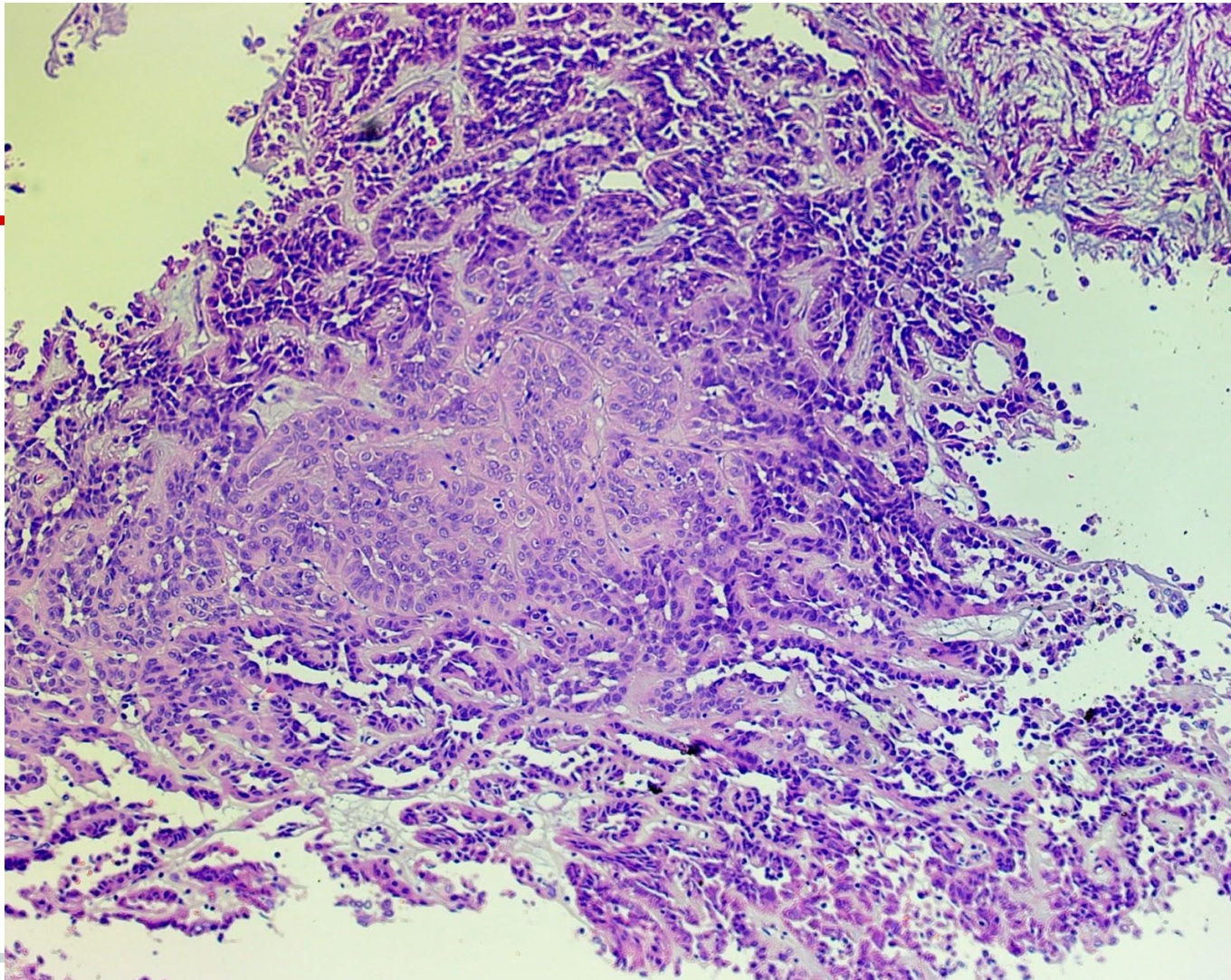


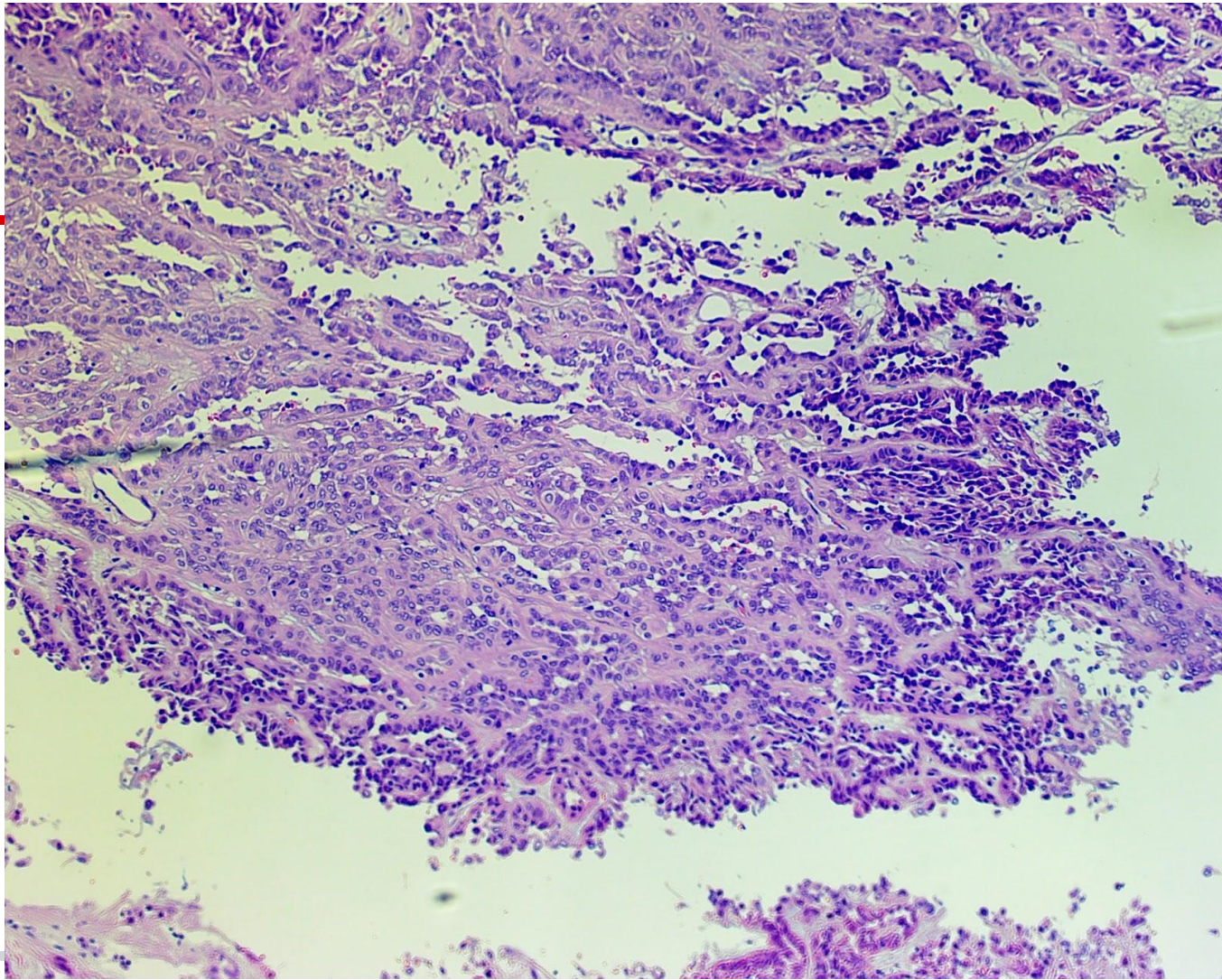


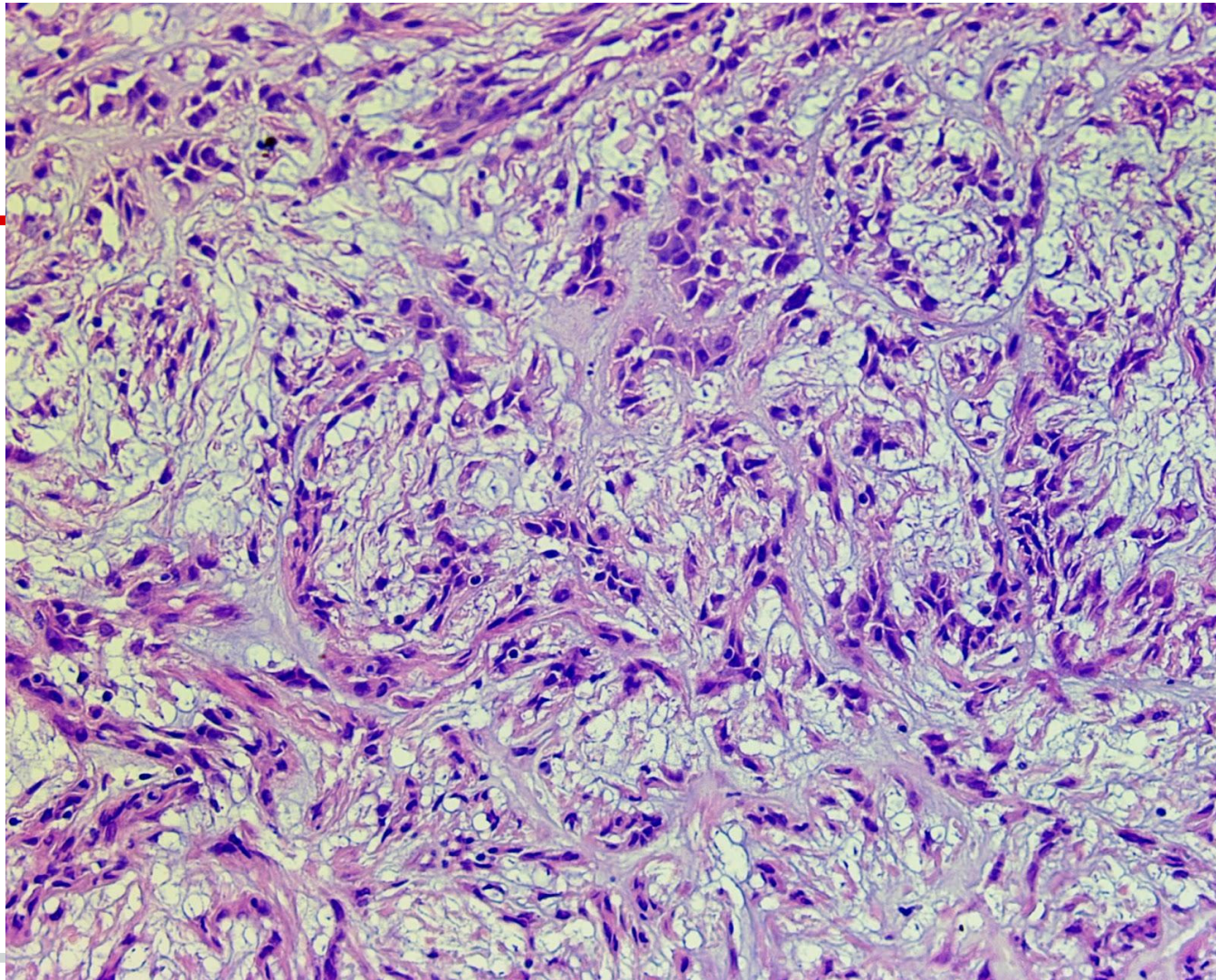


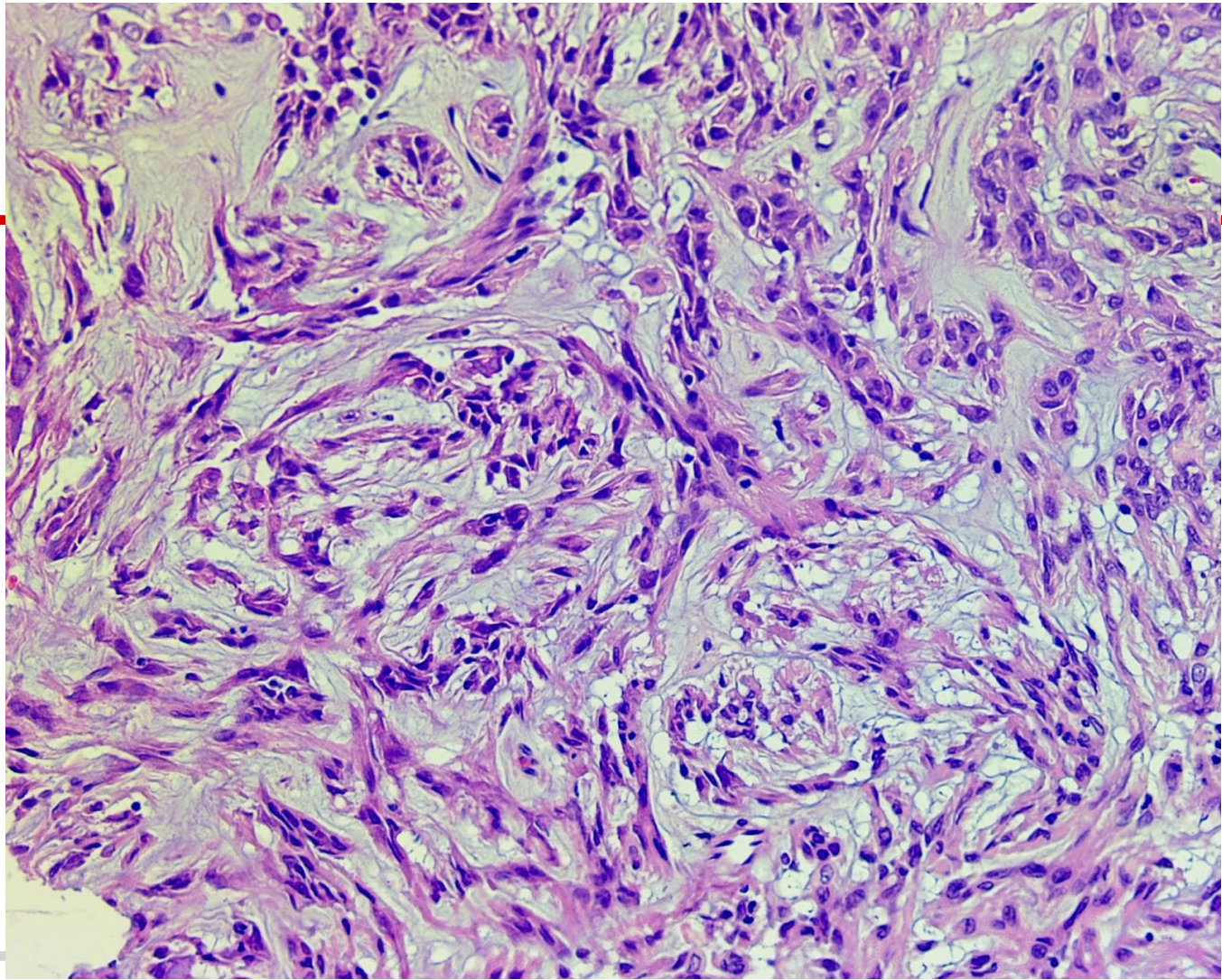


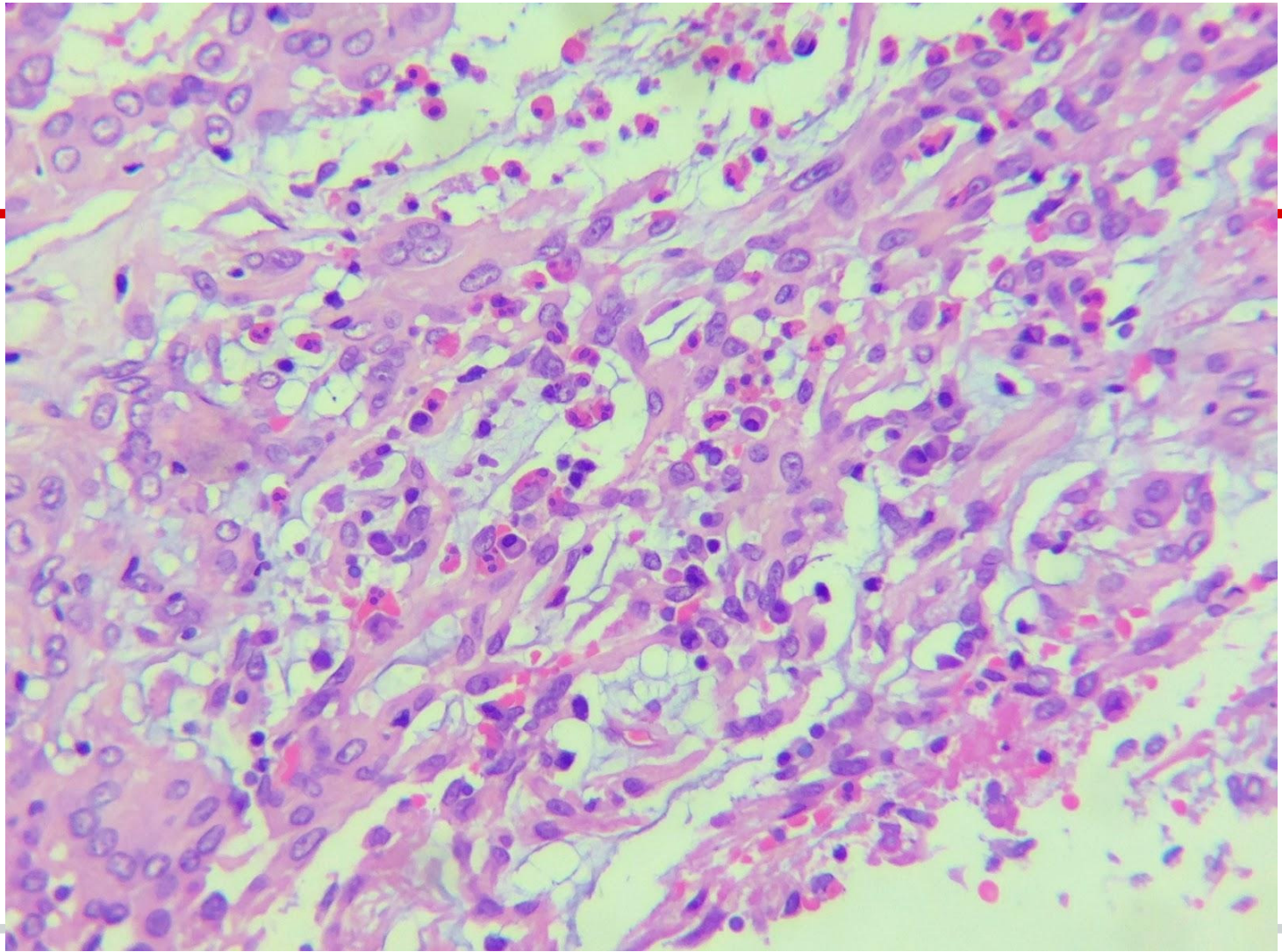




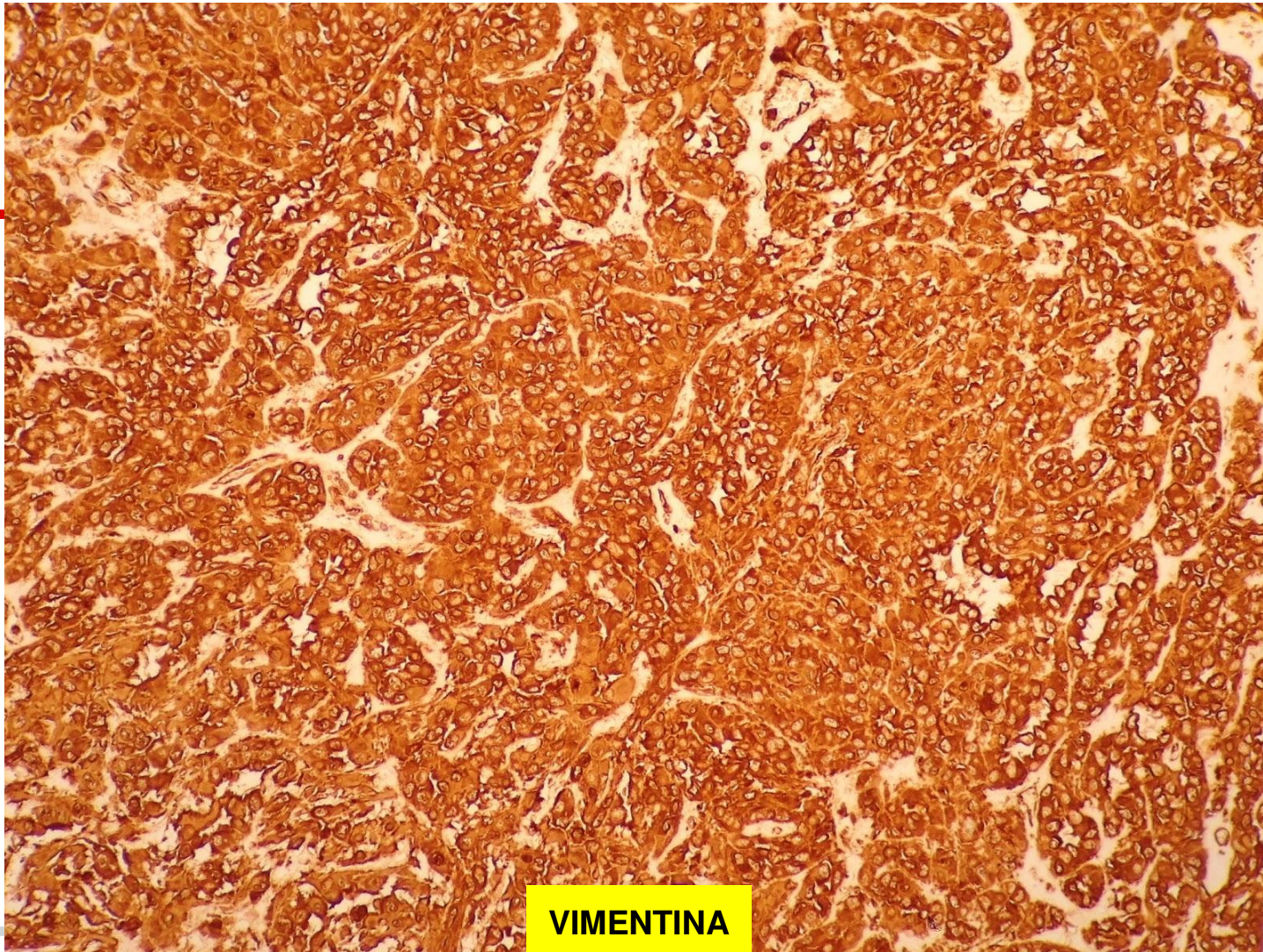




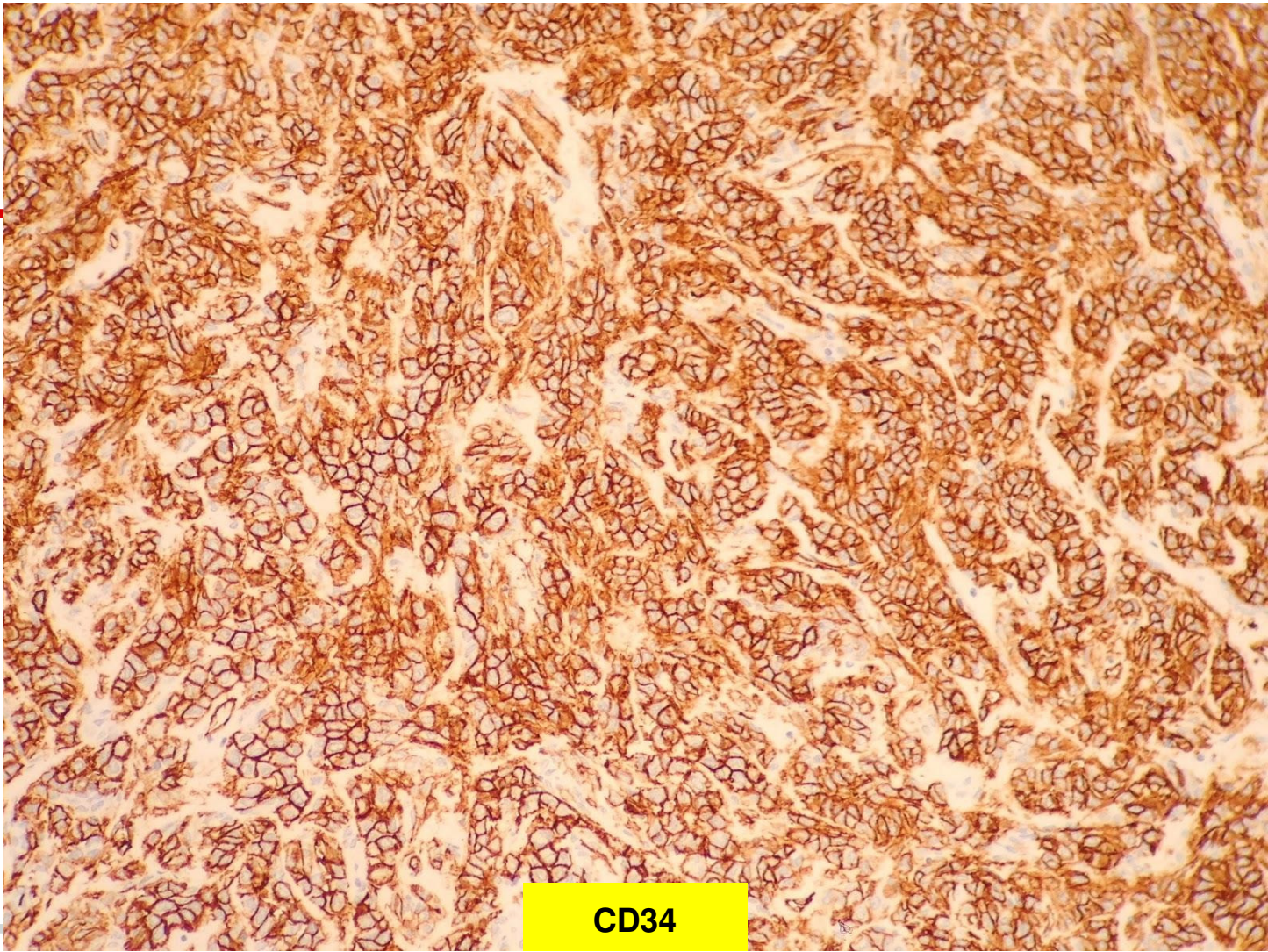




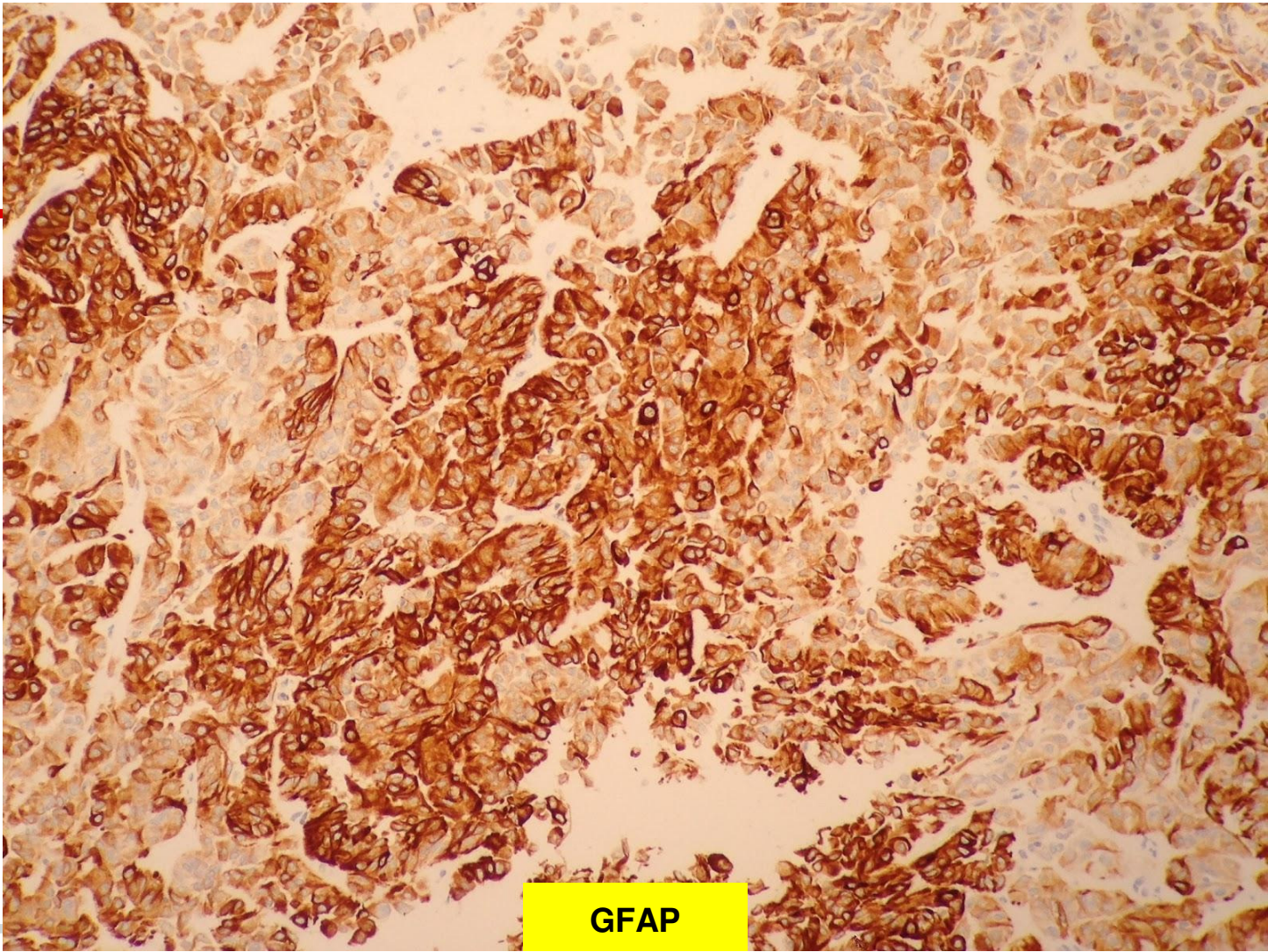
IMUNO-HISTOQUÍMICA



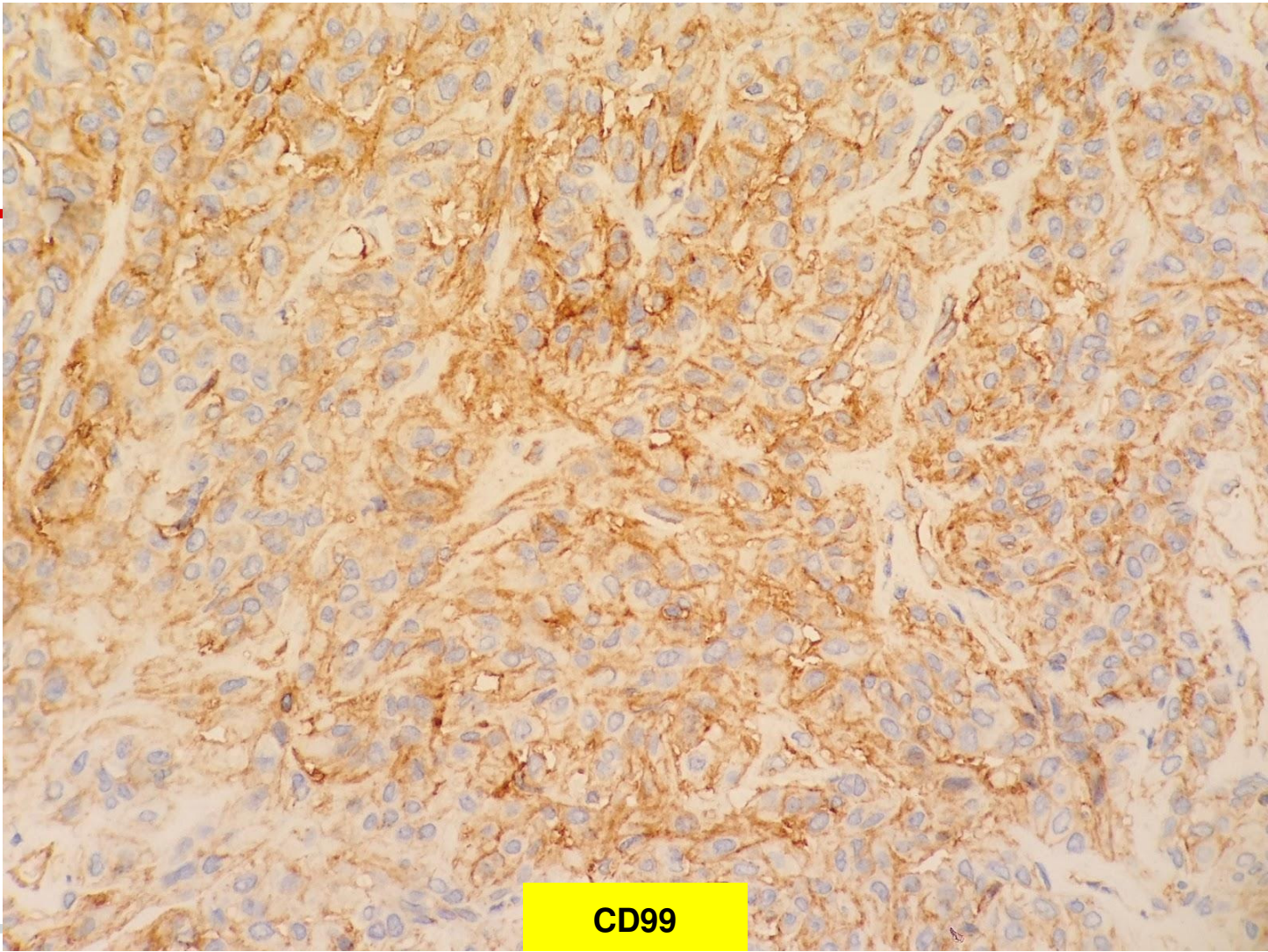
VIMENTINA



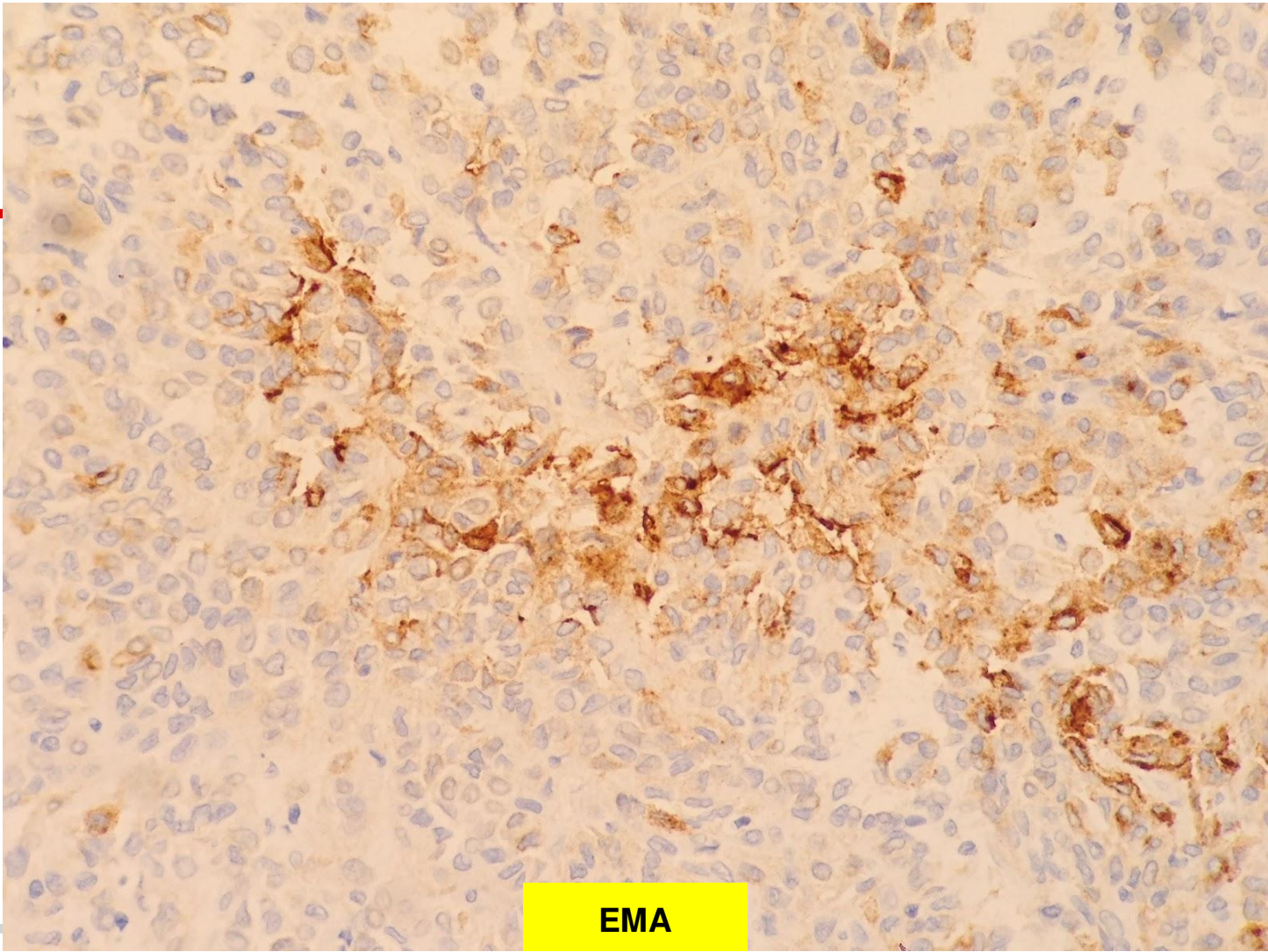
CD34



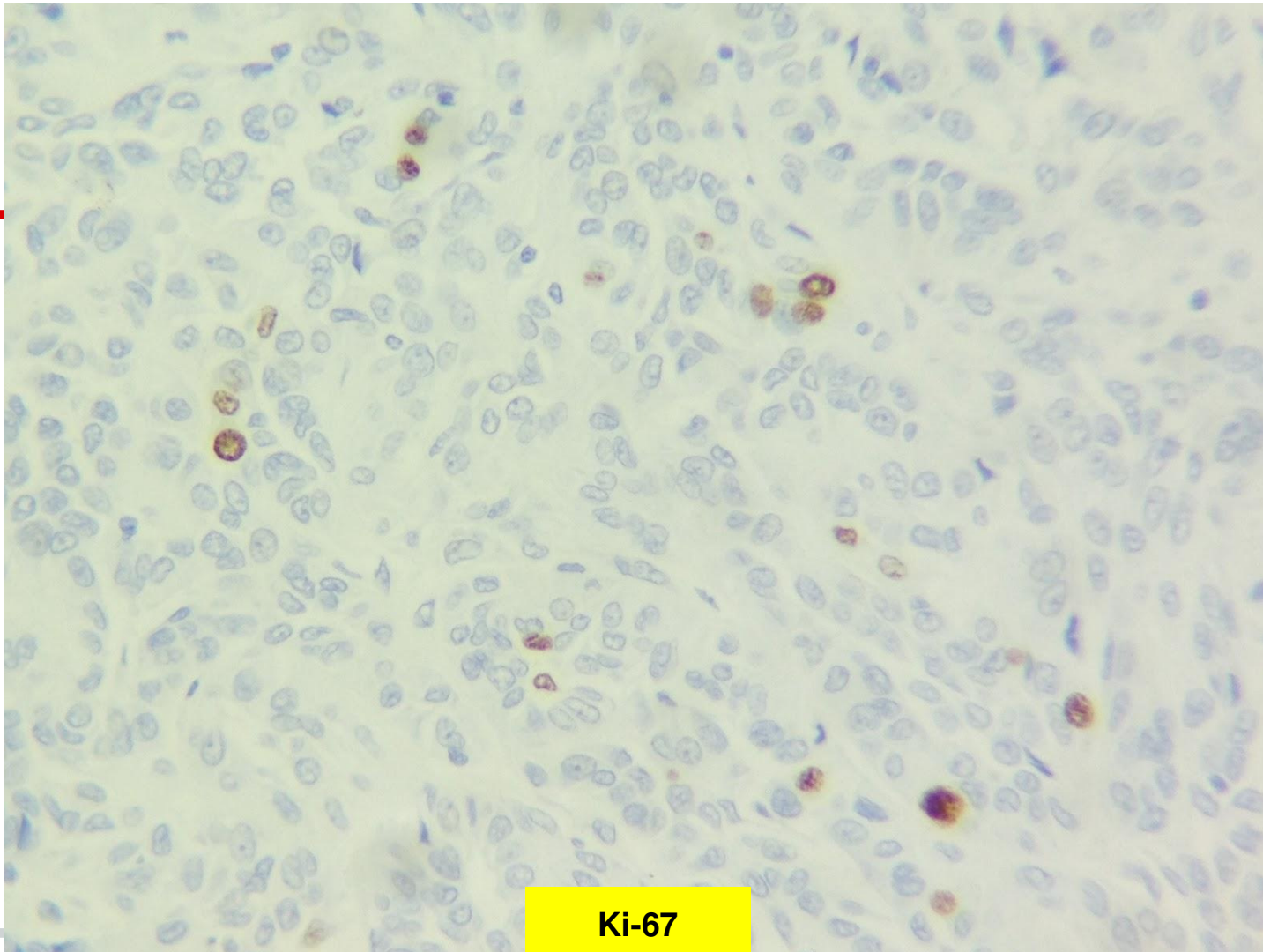
GFAP



CD99



EMA



Ki-67

S100	Negativo
Cromogranina	Negativo
Sinaptofisina	Negativo
Progesterona	Negativo

**Com base nos achados
morfológicos e imunoistoquímicos,
qual o seu diagnóstico?**
