



Sociedade Brasileira de Patologia



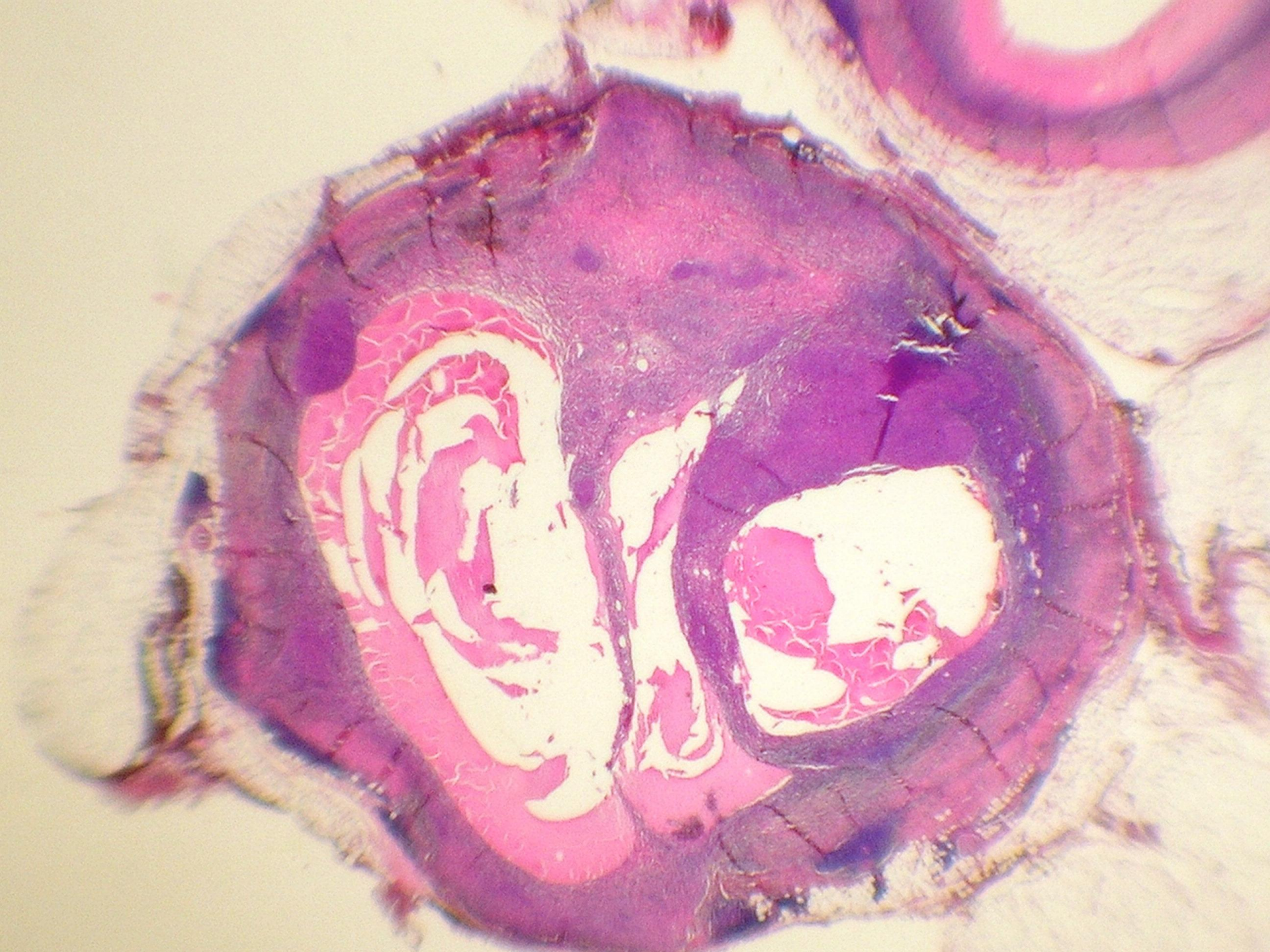
Prof. Dr. Luiz Carlos da Silva
Faculdade de Medicina de Marília
Hospital de Clínicas de Marília

CASO DE MARÍLIA

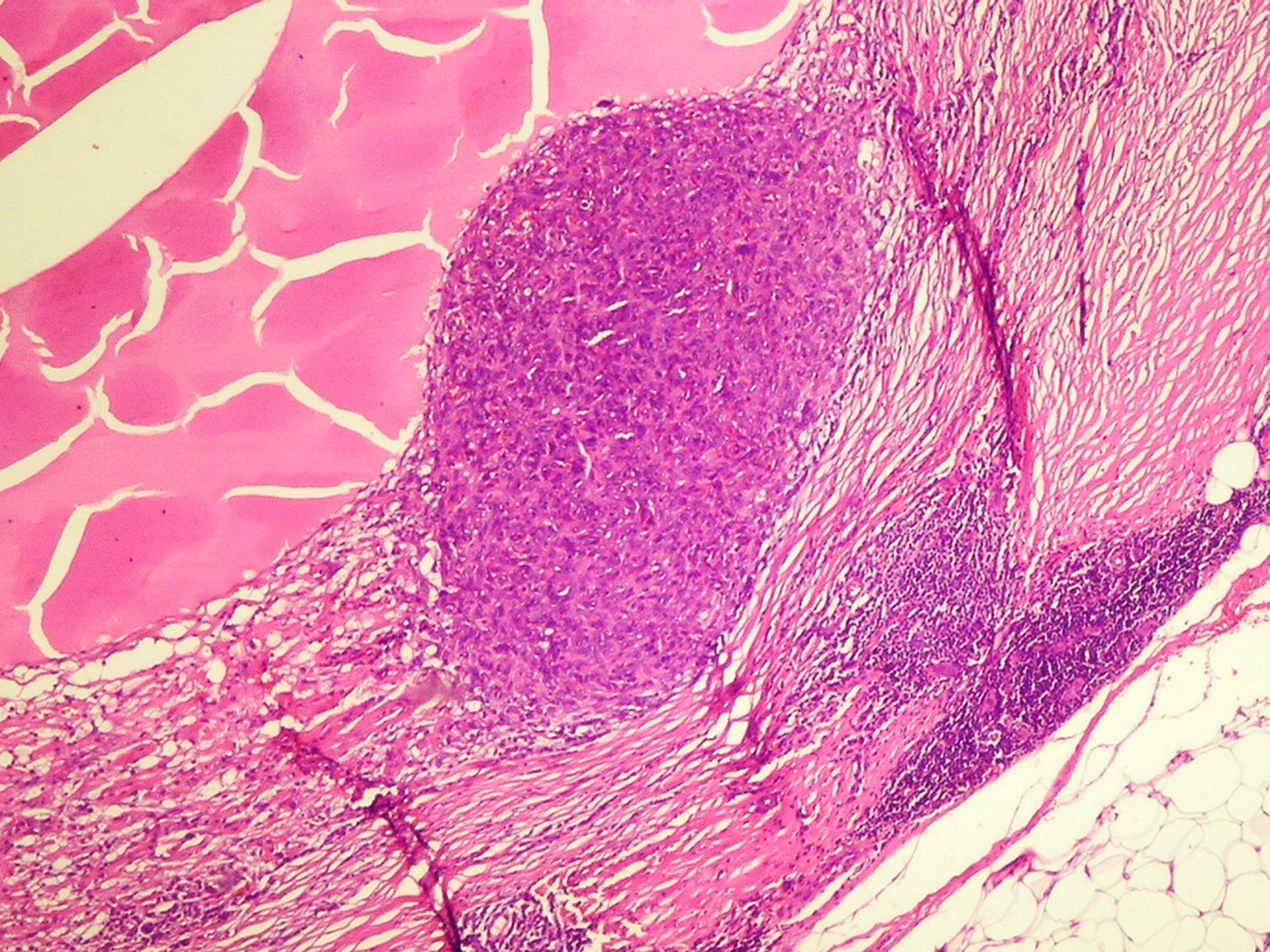
- Mulher de 48 anos com lesão no braço. Neuroma?

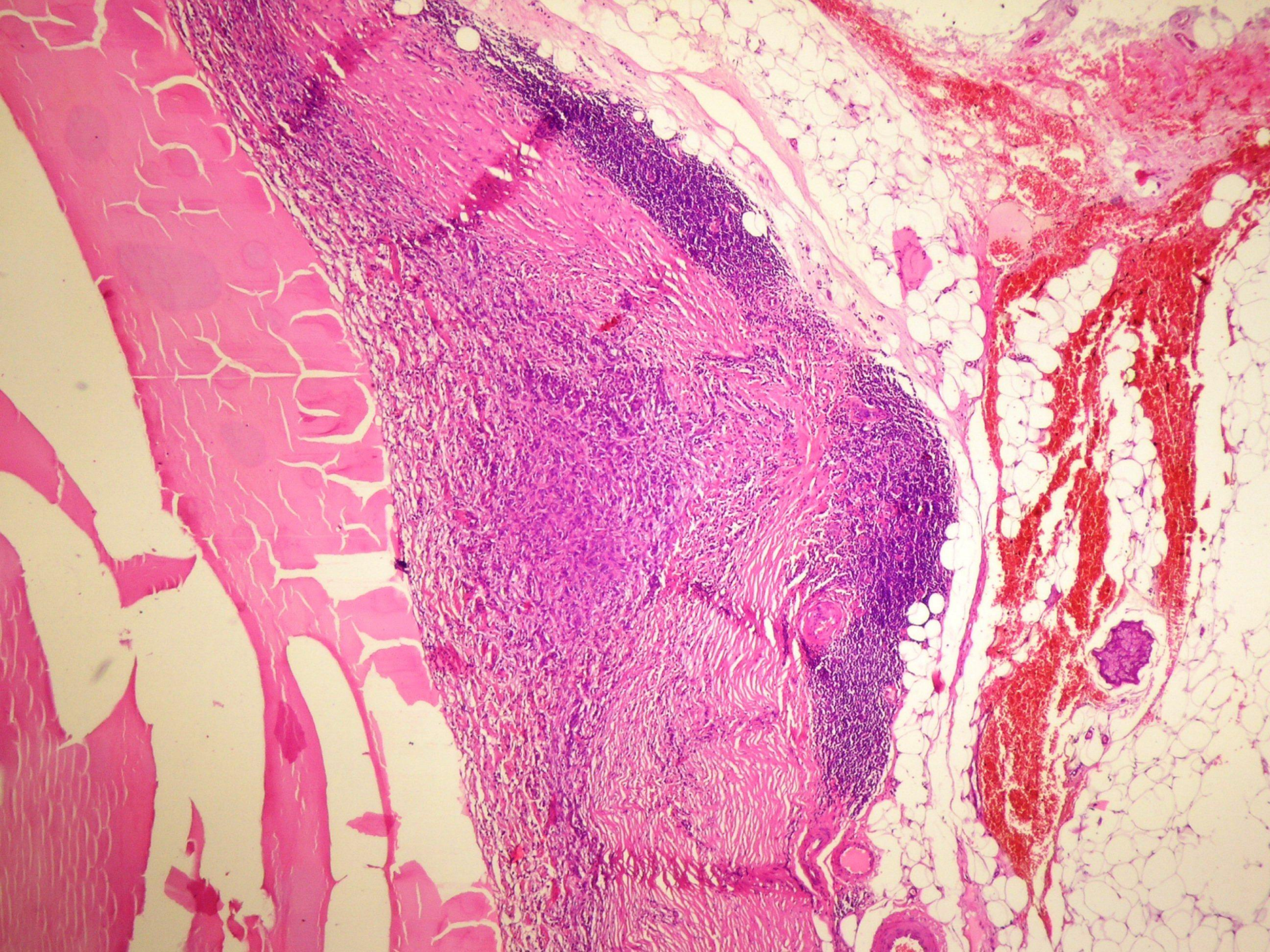
MICROSCOPIA

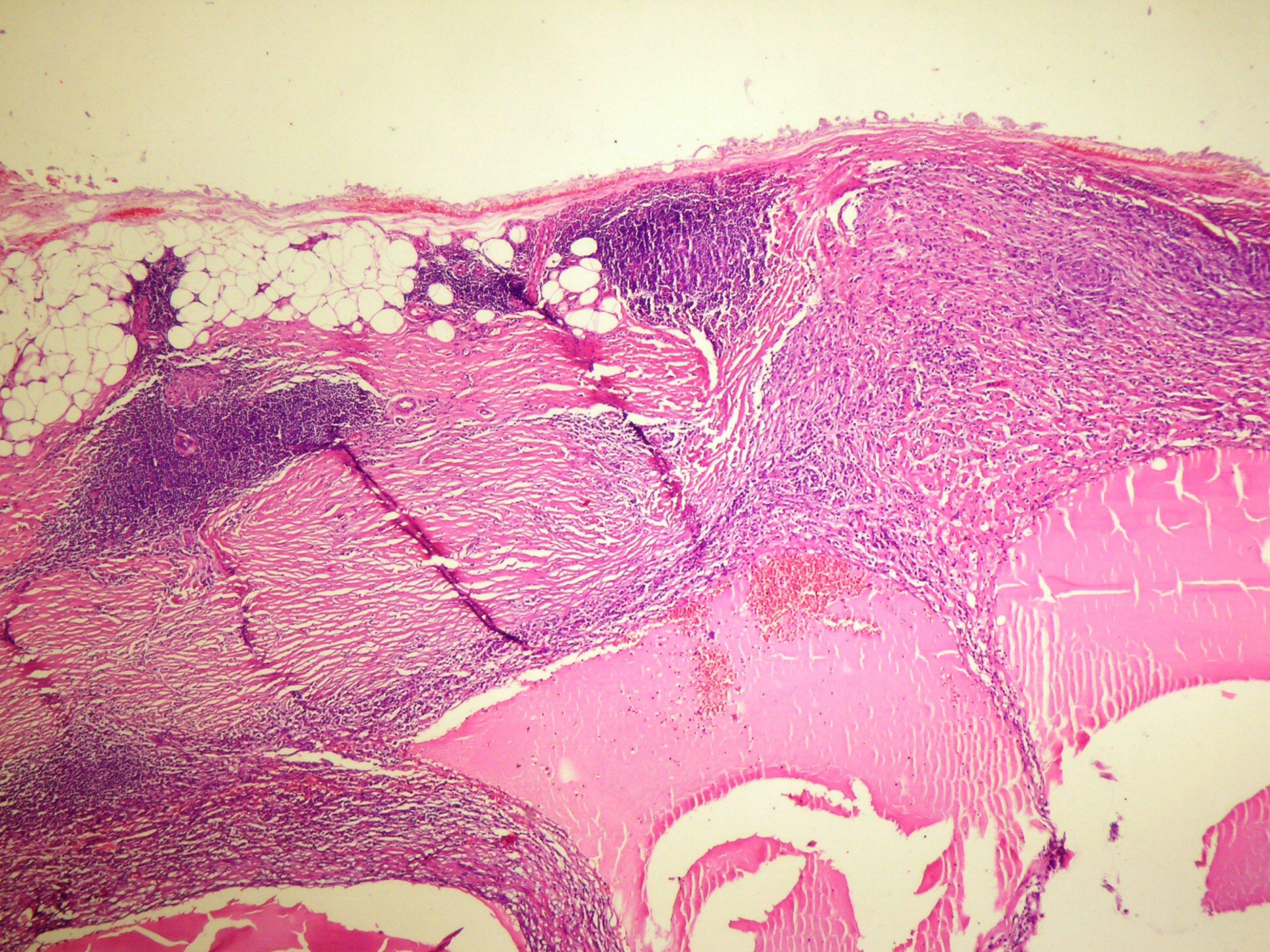
- 1 – Células tumorais
- 2 – Cavidades hemorrágicas
- 3 – Pseudocápsula fibrosa
- 4 – Infiltrado linfoplasmocitário

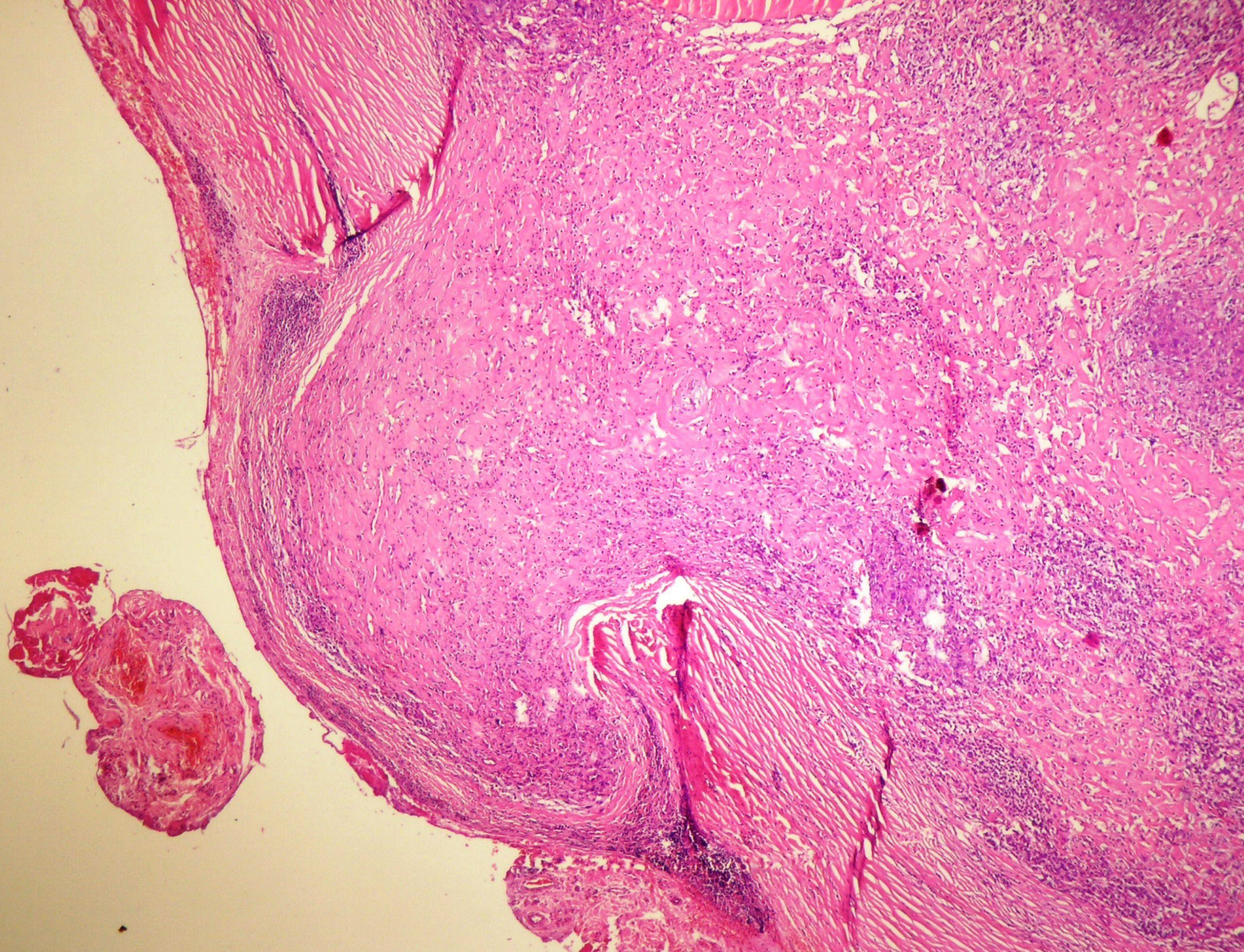


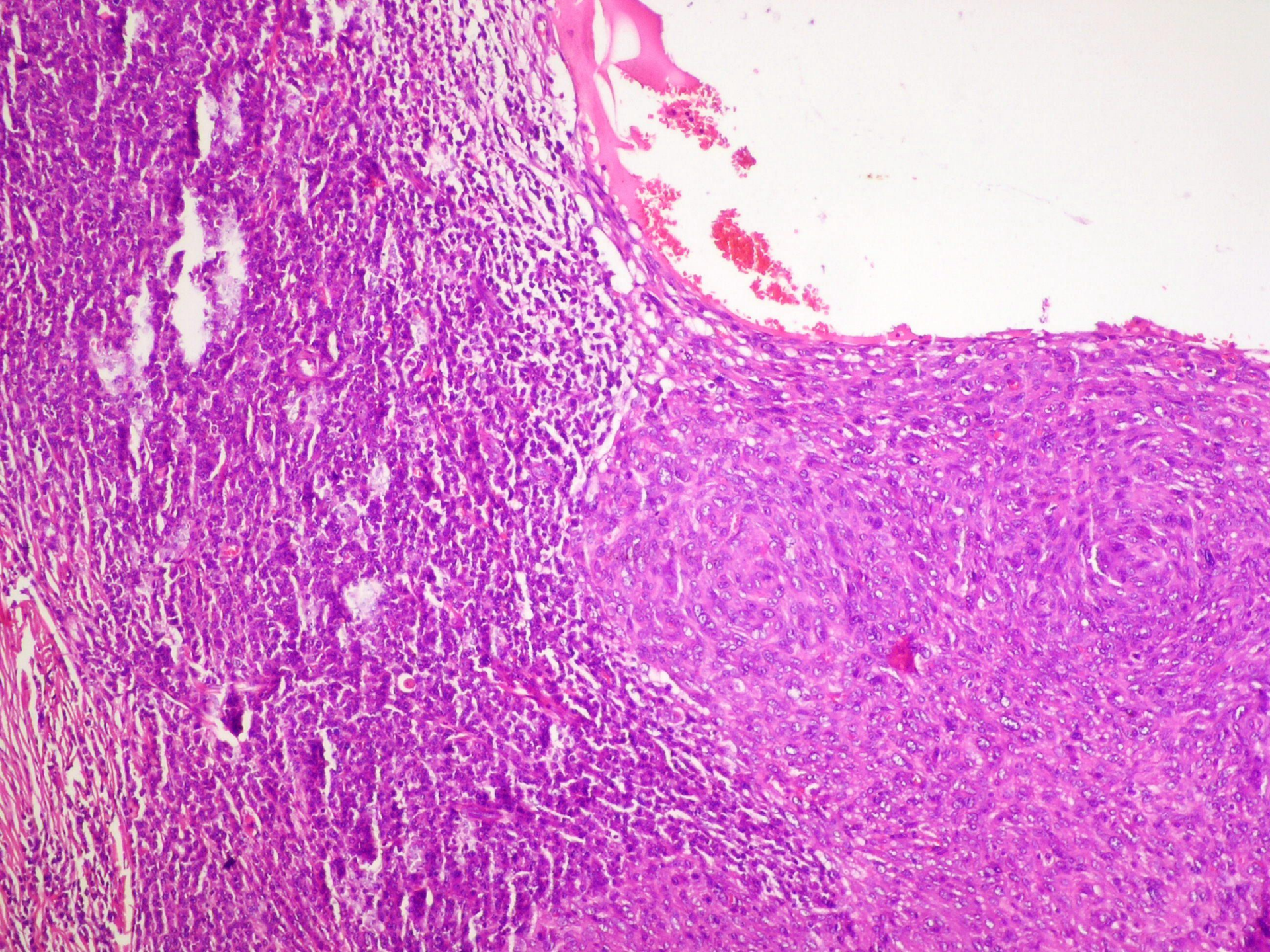


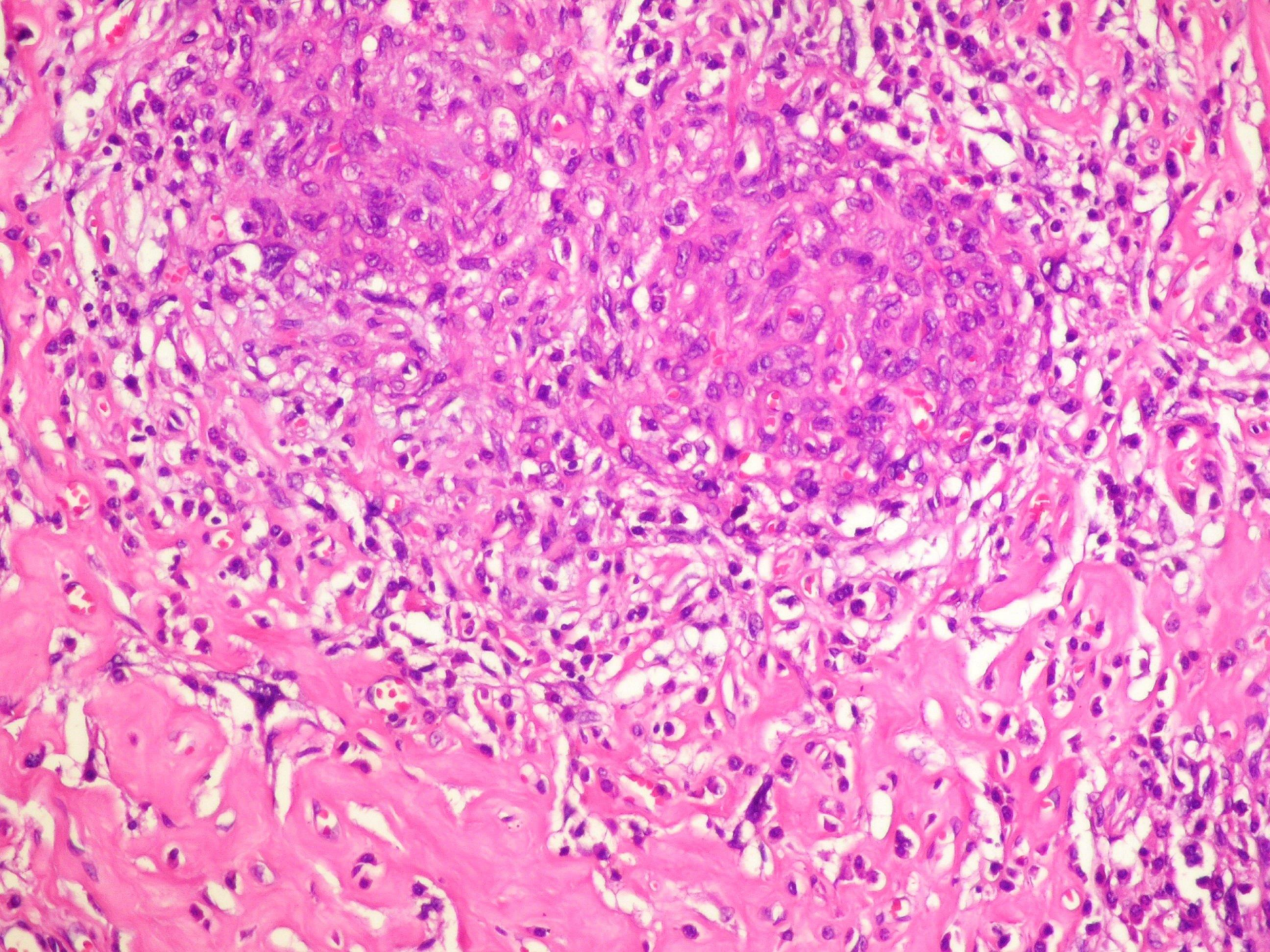


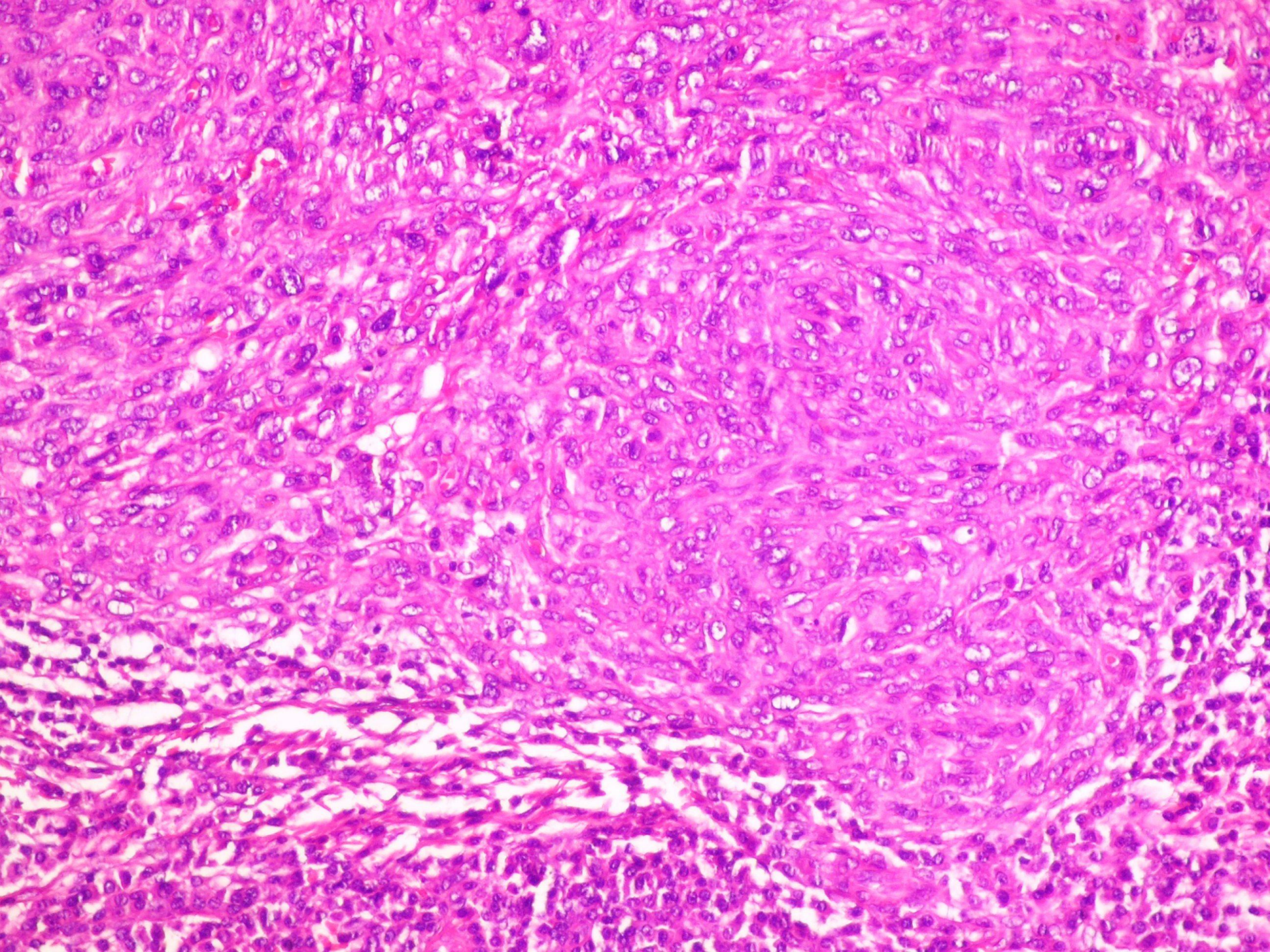


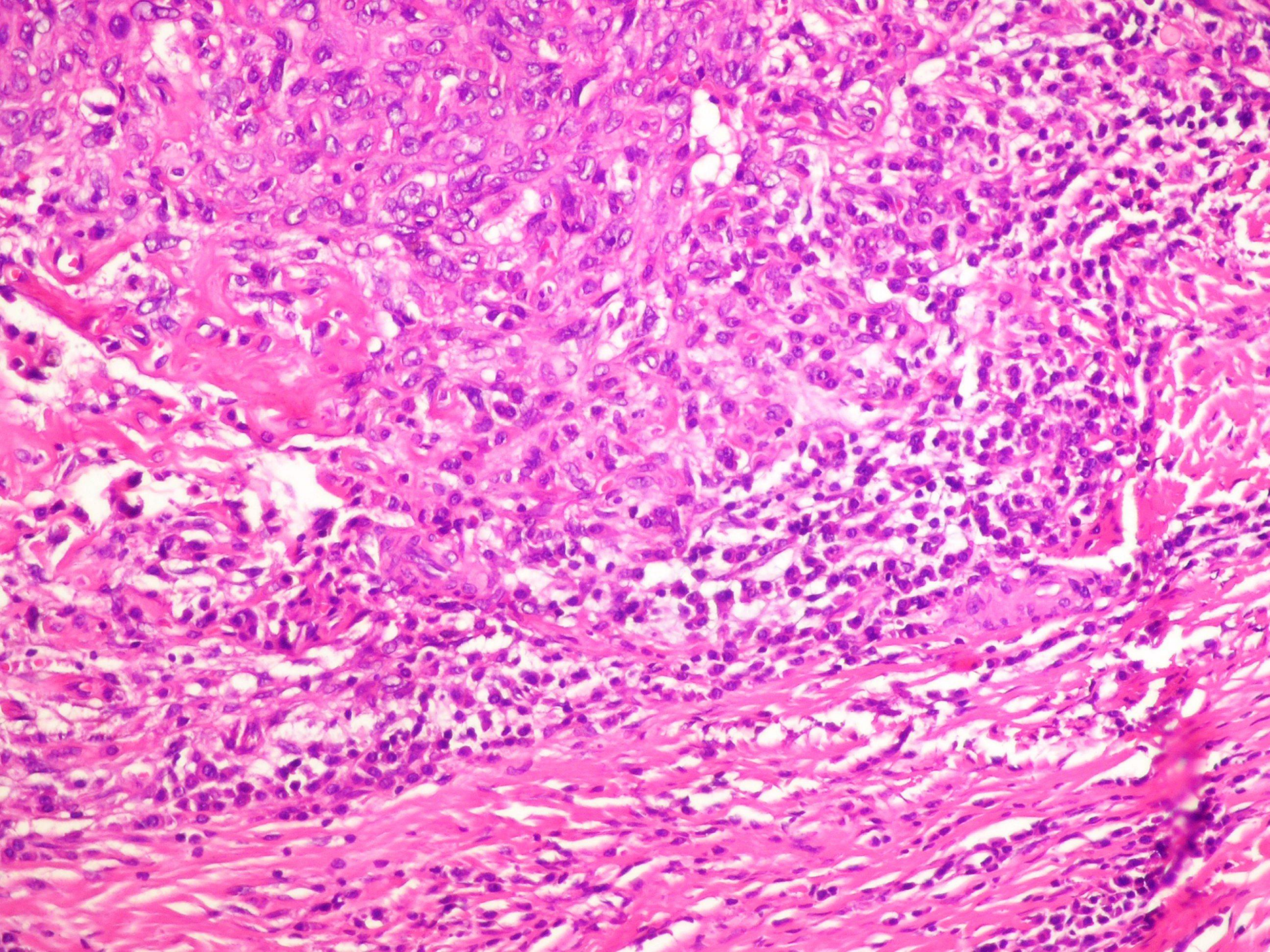


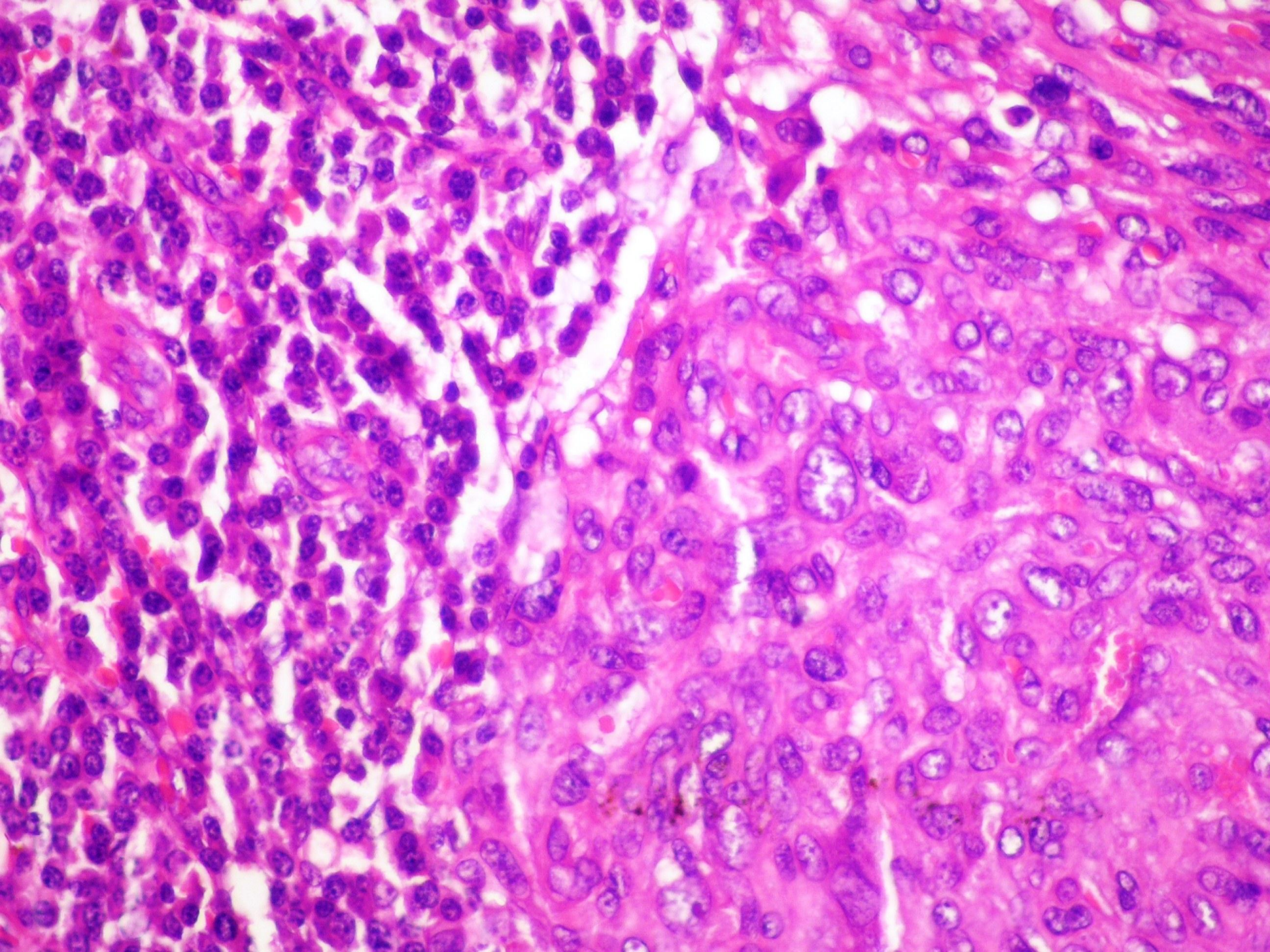


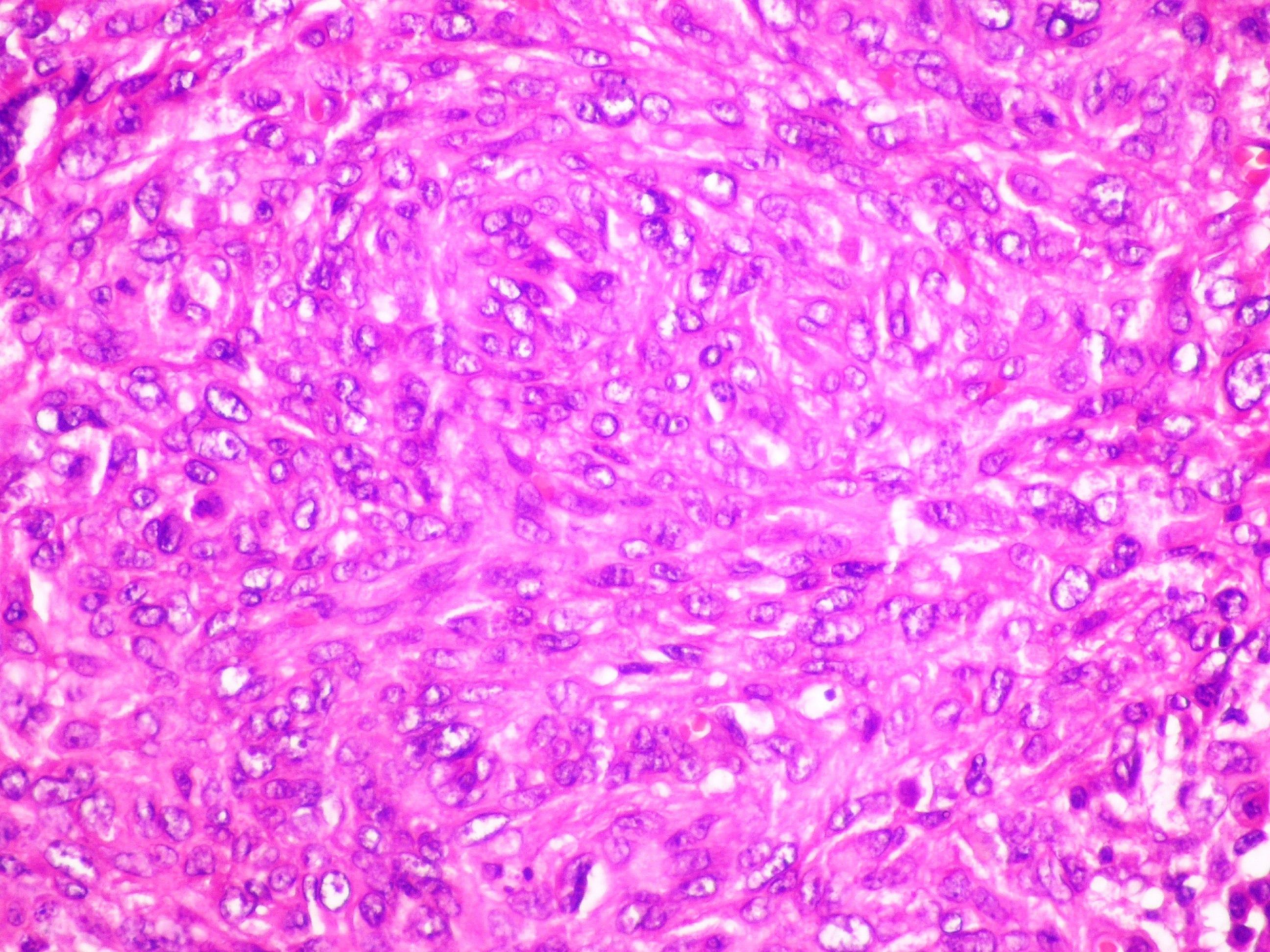


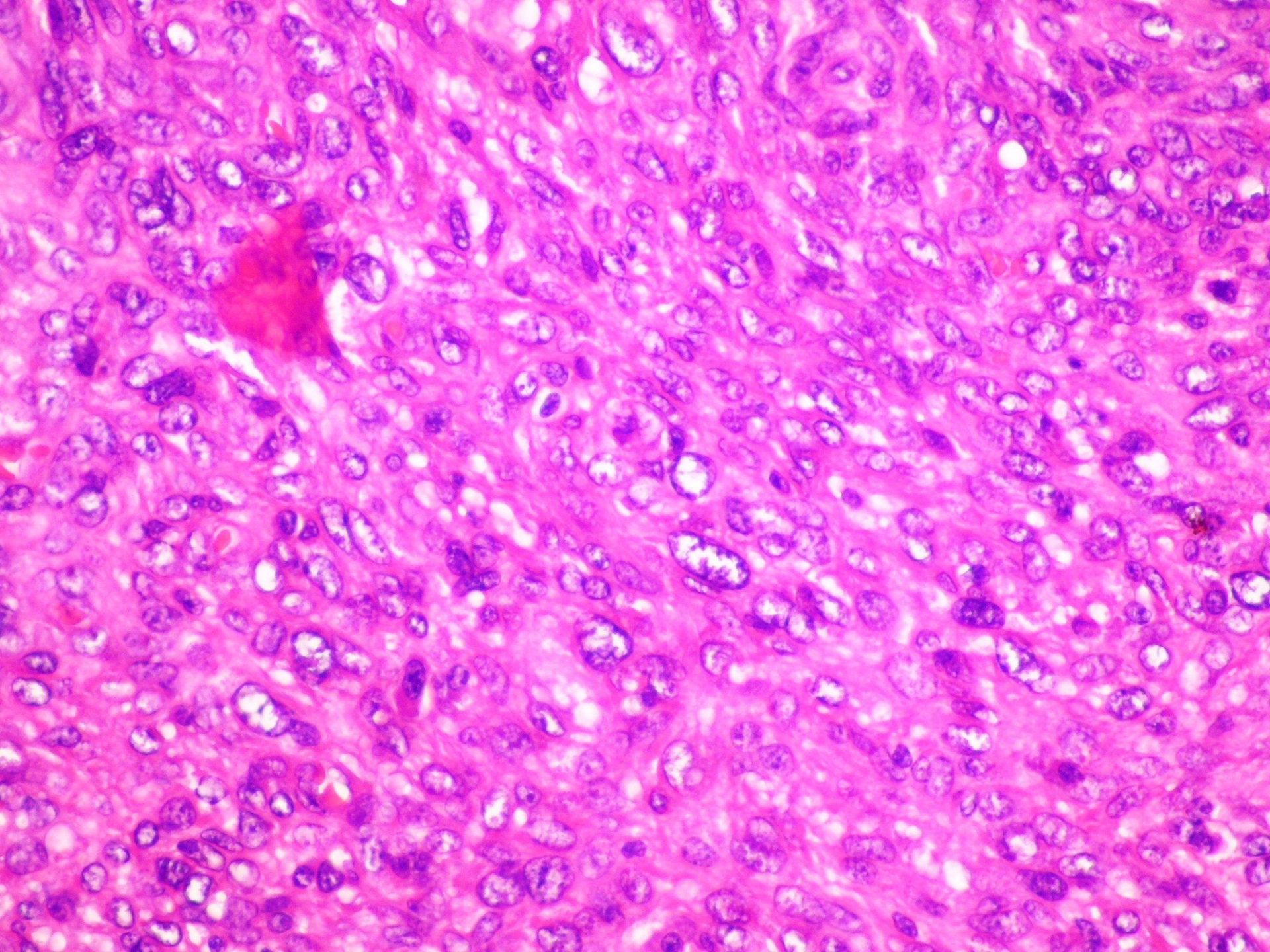


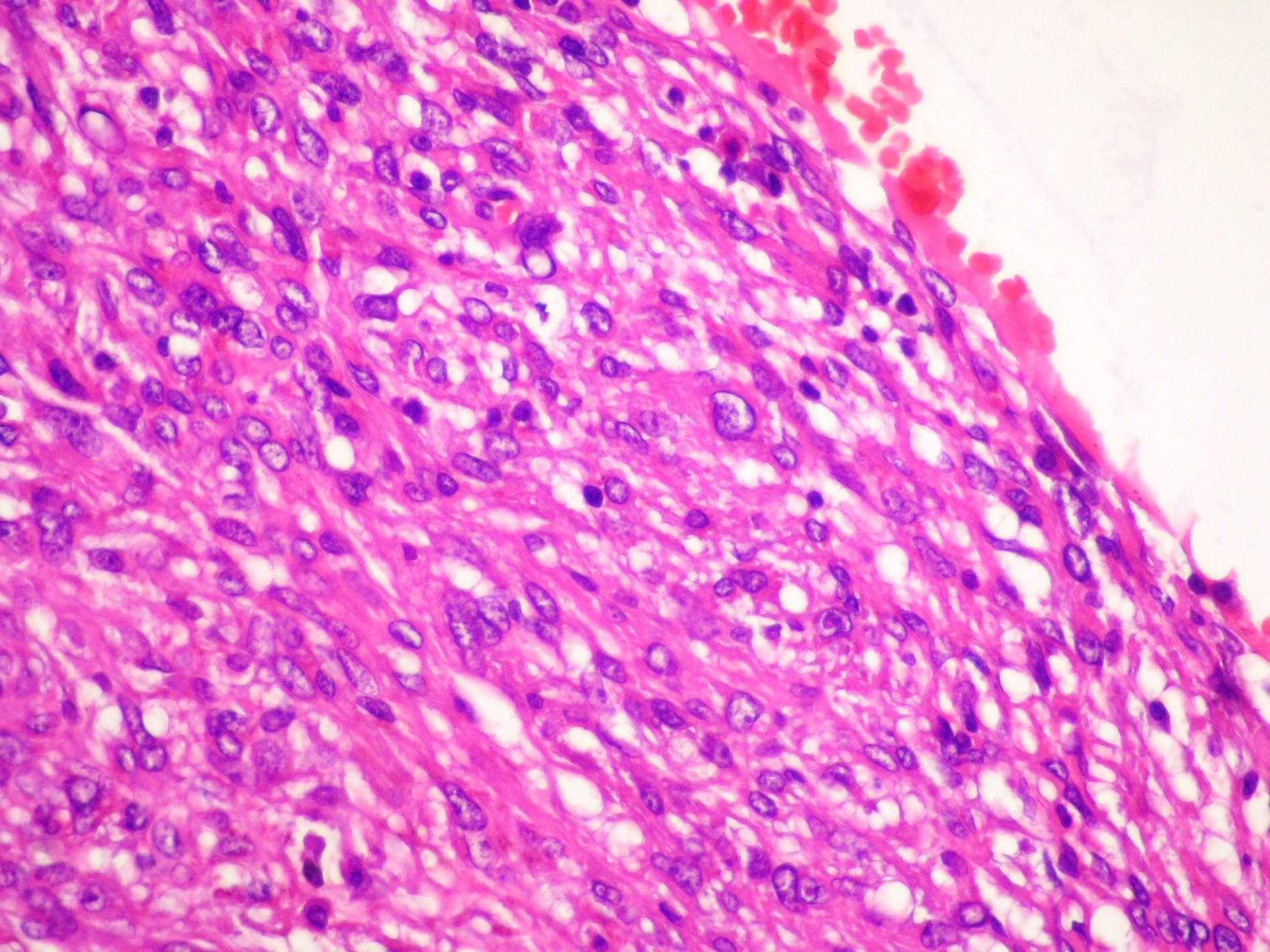


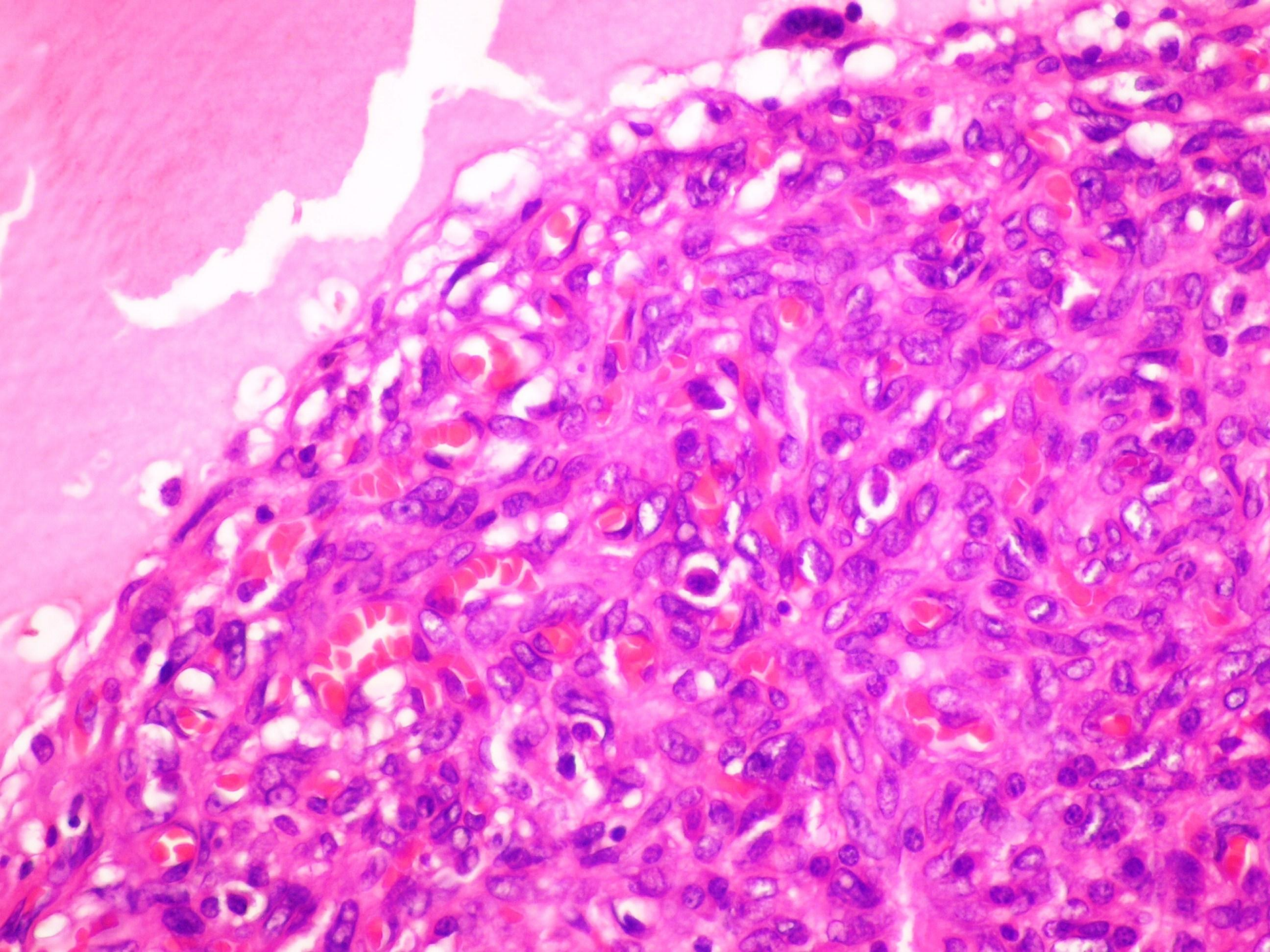












RESUMO DA MICROSCOPIA:

- 1 – Células tumorais
- 2 – Cavidades hemorrágicas
- 3 – Pseudocápsula fibrosa
- 4 – Infiltrado linfoplasmocitário



Sociedade Brasileira de Patologia

**Com base nos achados
morfológicos, qual o seu
diagnóstico?**

