



Sociedade Brasileira de Patologia

# Caso do mês

## Fevereiro de 2016 - 2

**Ruana Rocha – R2**

**Prof. Dr. José Vassallo**

**Prof<sup>a</sup>. Dra. Cecília Escanhoela**

**ANATOMIA PATOLÓGICA**

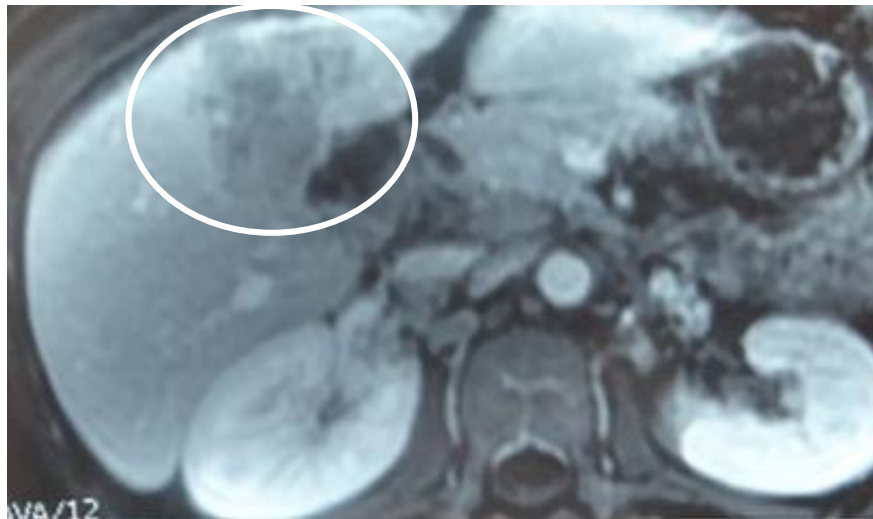
**UNICAMP**



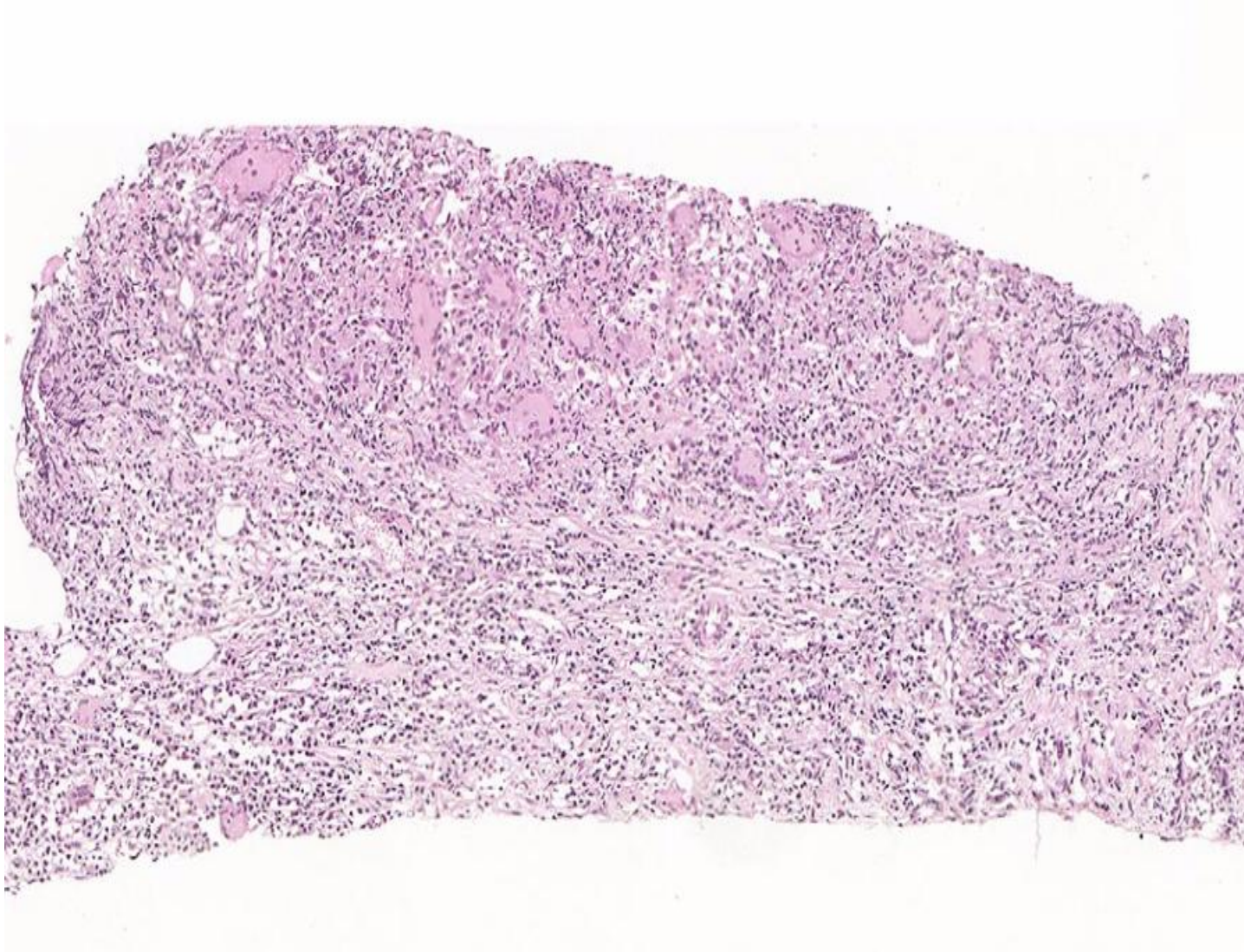
**UNICAMP**

# CASO CLÍNICO

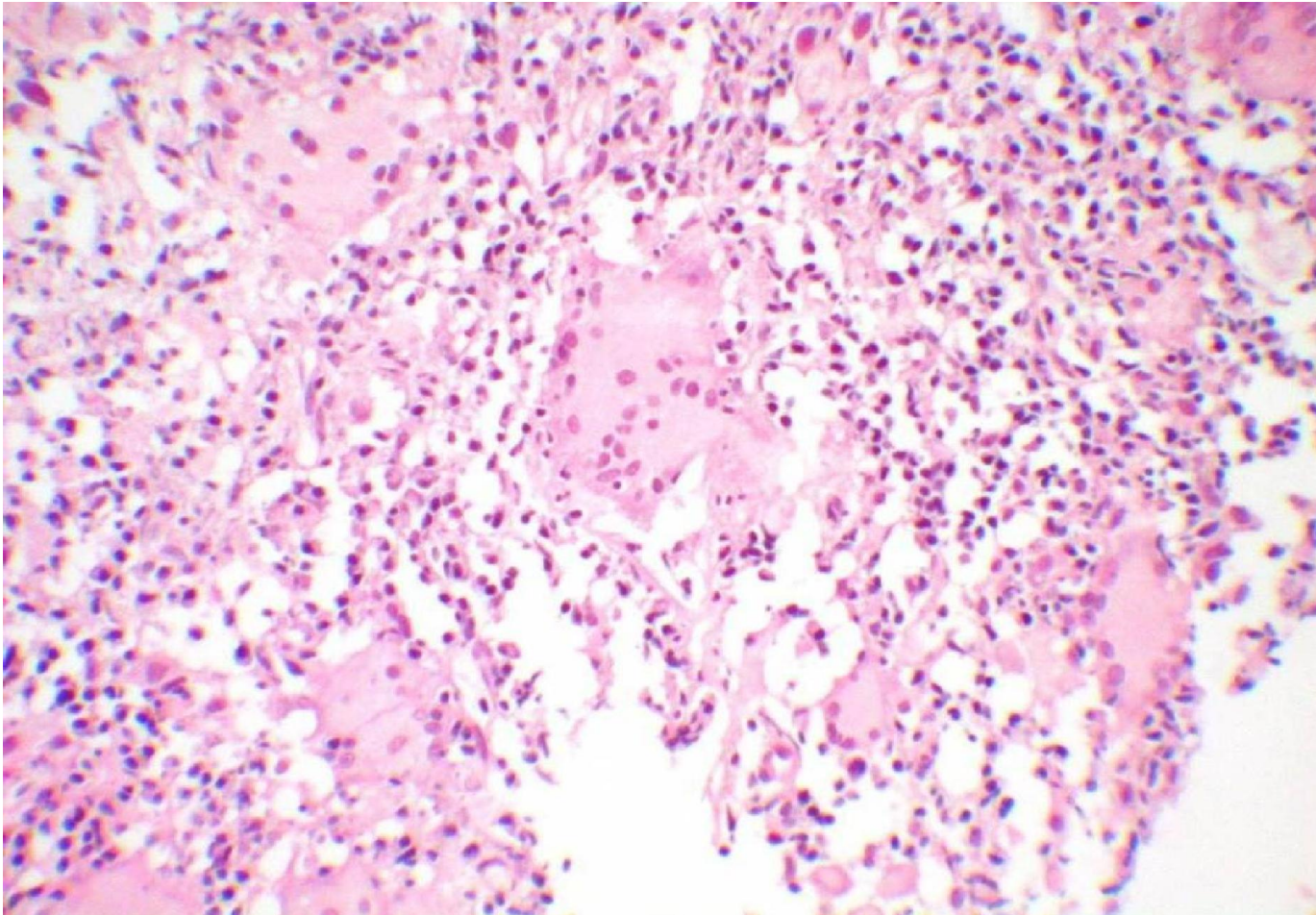
- Mulher, 47 anos
- Assintomática
- Durante exames de rotina, foi identificada massa hepática à tomografia computadorizada.



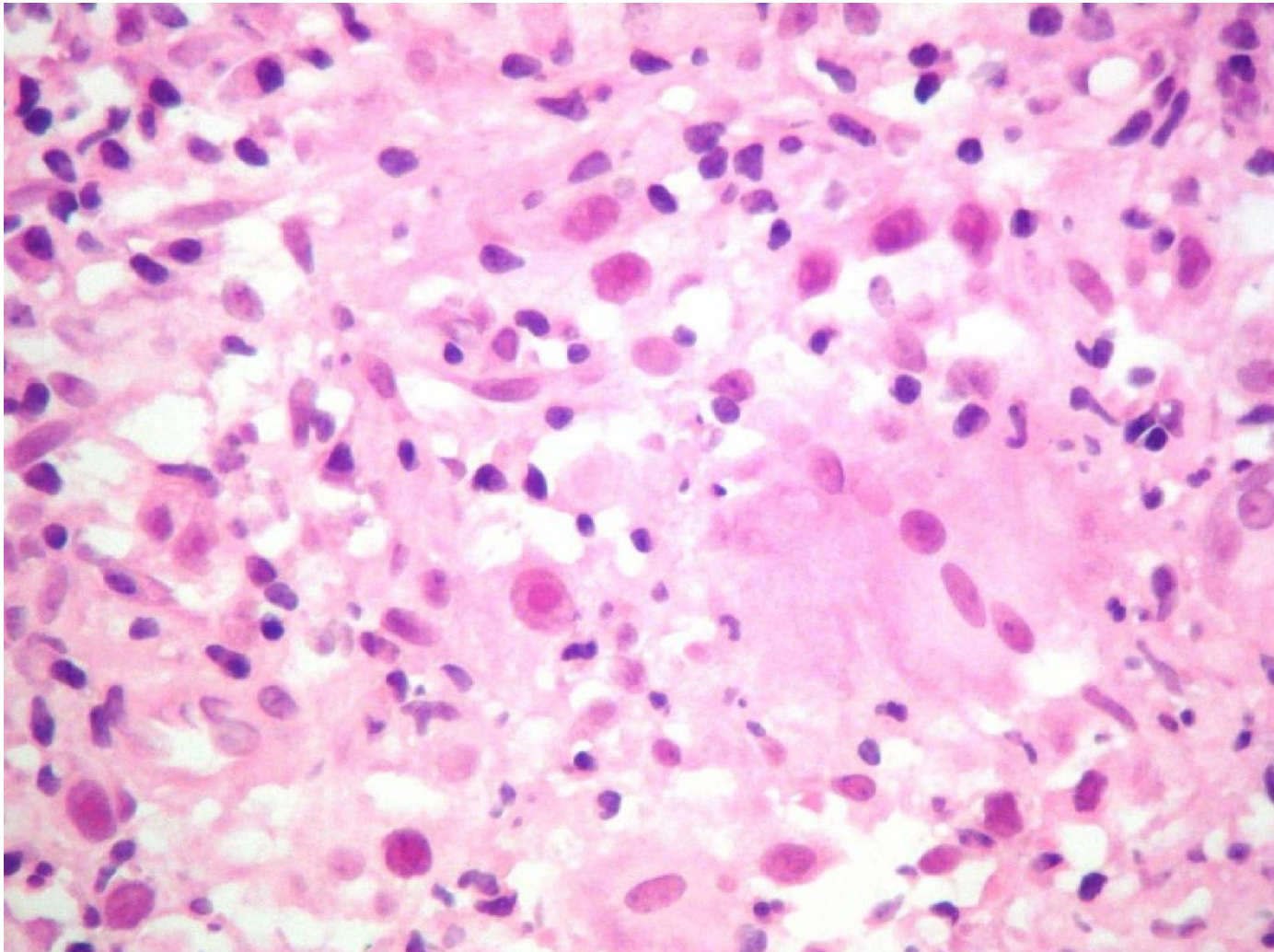
# Biópsia por agulha



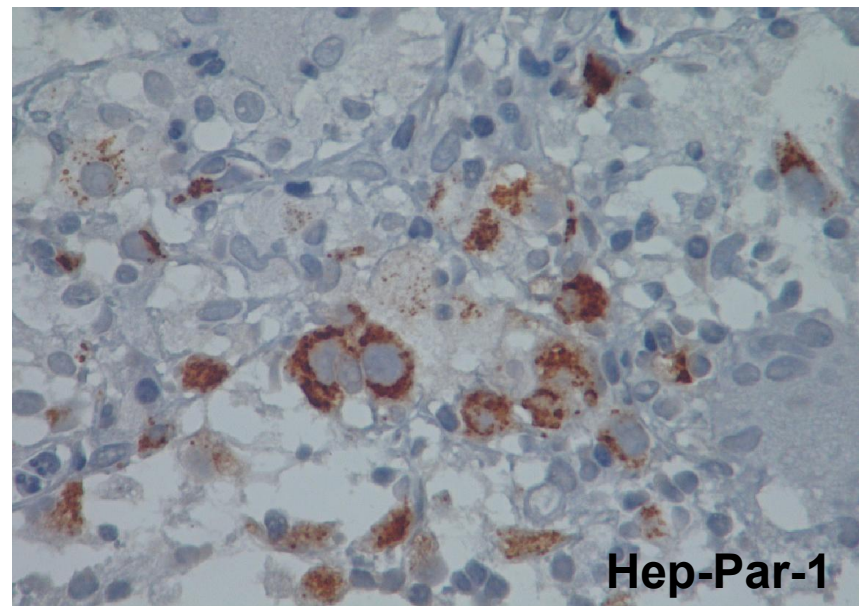
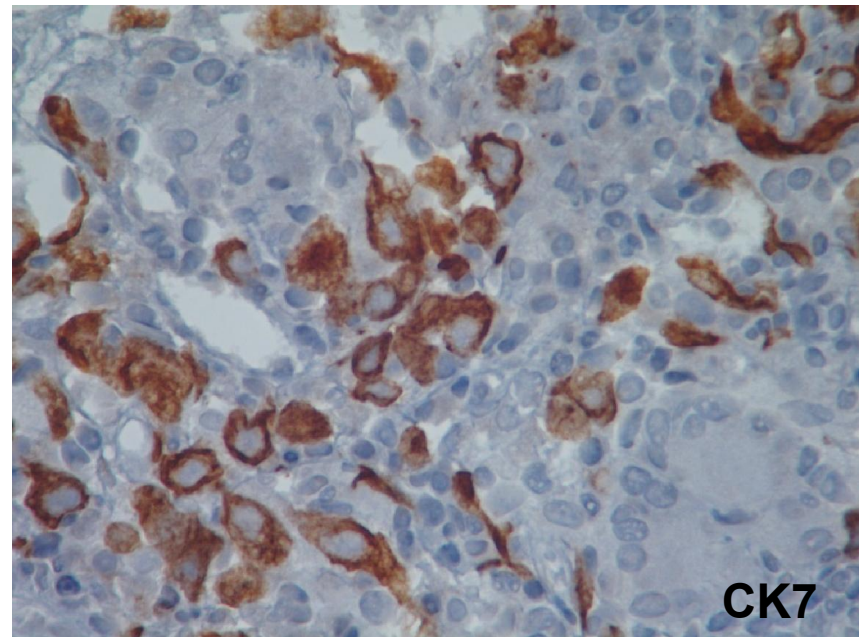
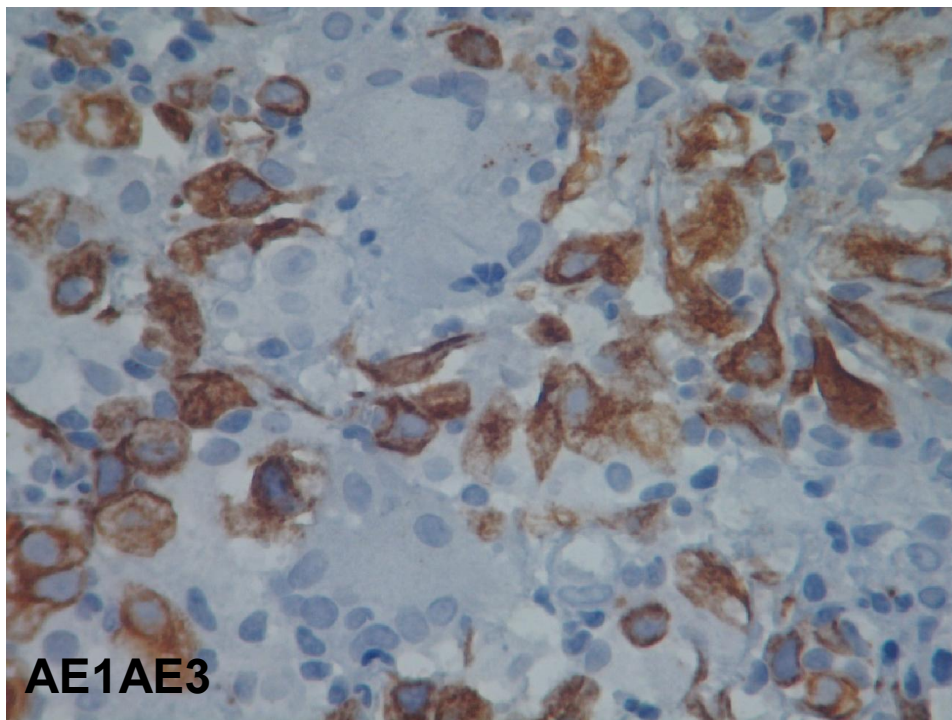
# Biópsia por agulha



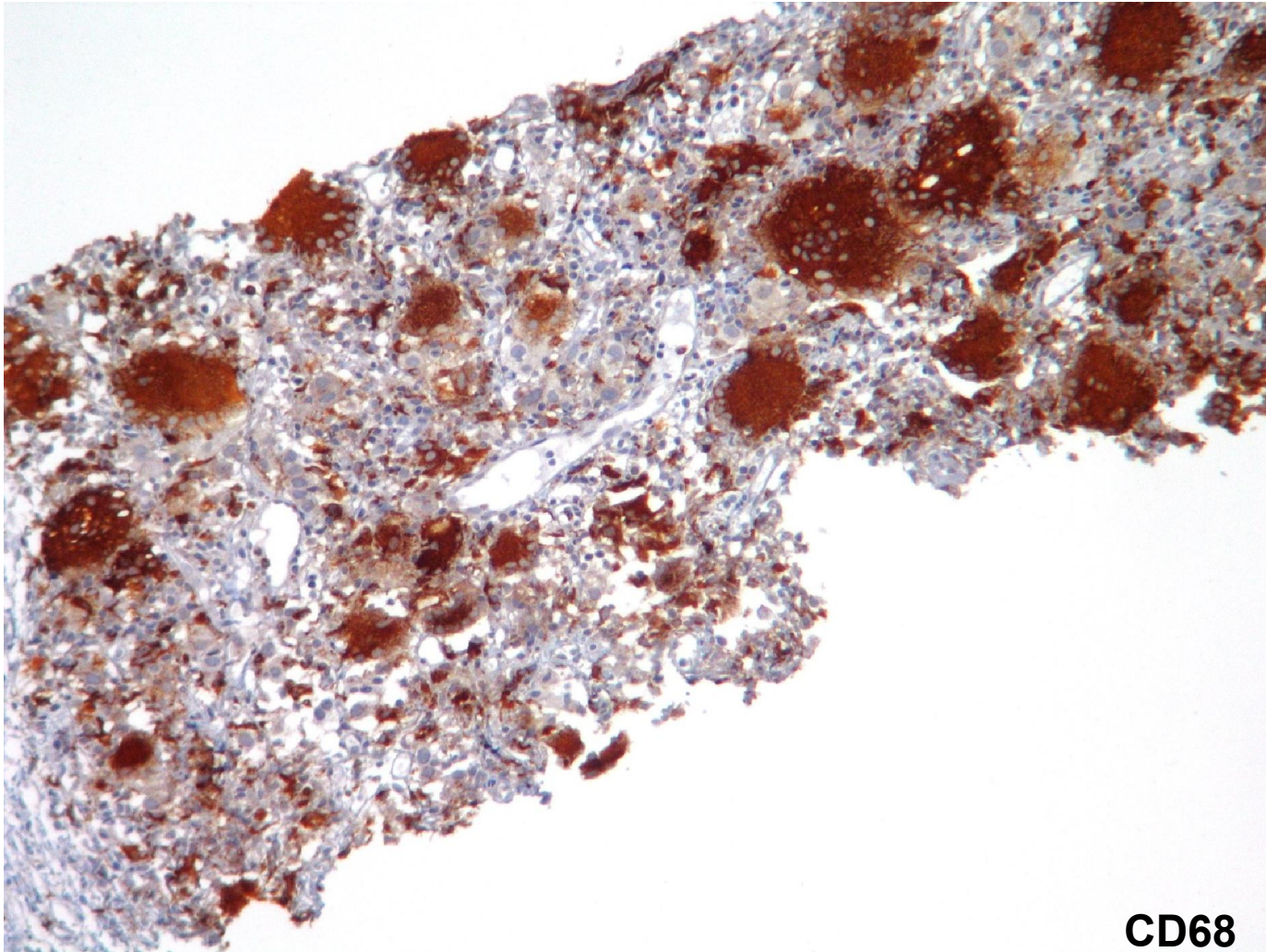
# Biópsia por agulha



# Perfil inmunoistoquímico



# Perfil inmunohistoquímico




**CD68**

# Hipóteses diagnósticas

- Hepatite granulomatosa
- Carcinoma pouco diferenciado
- Colangite granulomatosa
- Histiocitose de células de Langerhans
- Tumor miofibroblástico inflamatório





**Com base nos achados  
morfológicos e  
imunohistoquímicos, qual o  
seu diagnóstico?**