

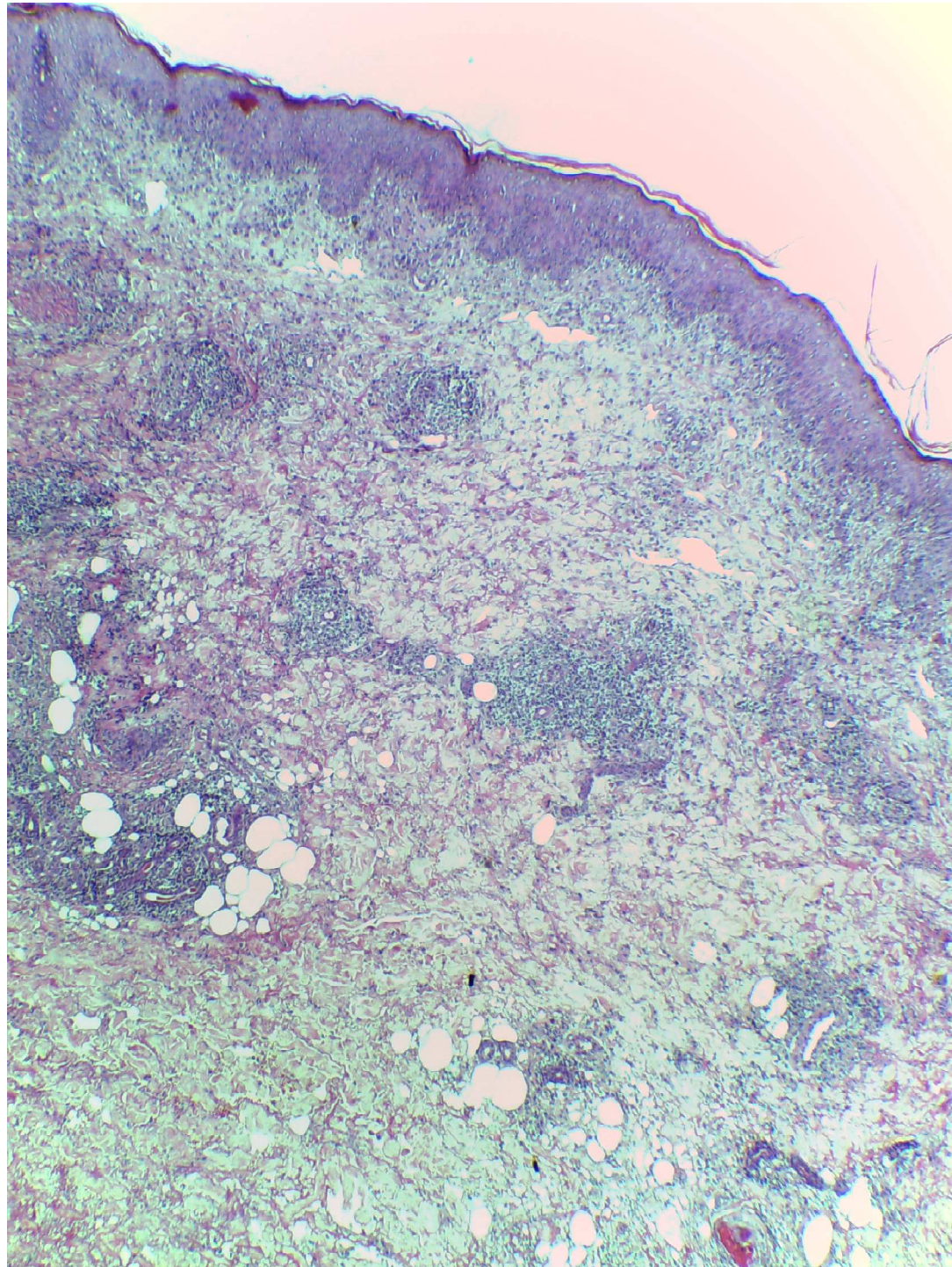
# 22o Nucleo de Especialidade

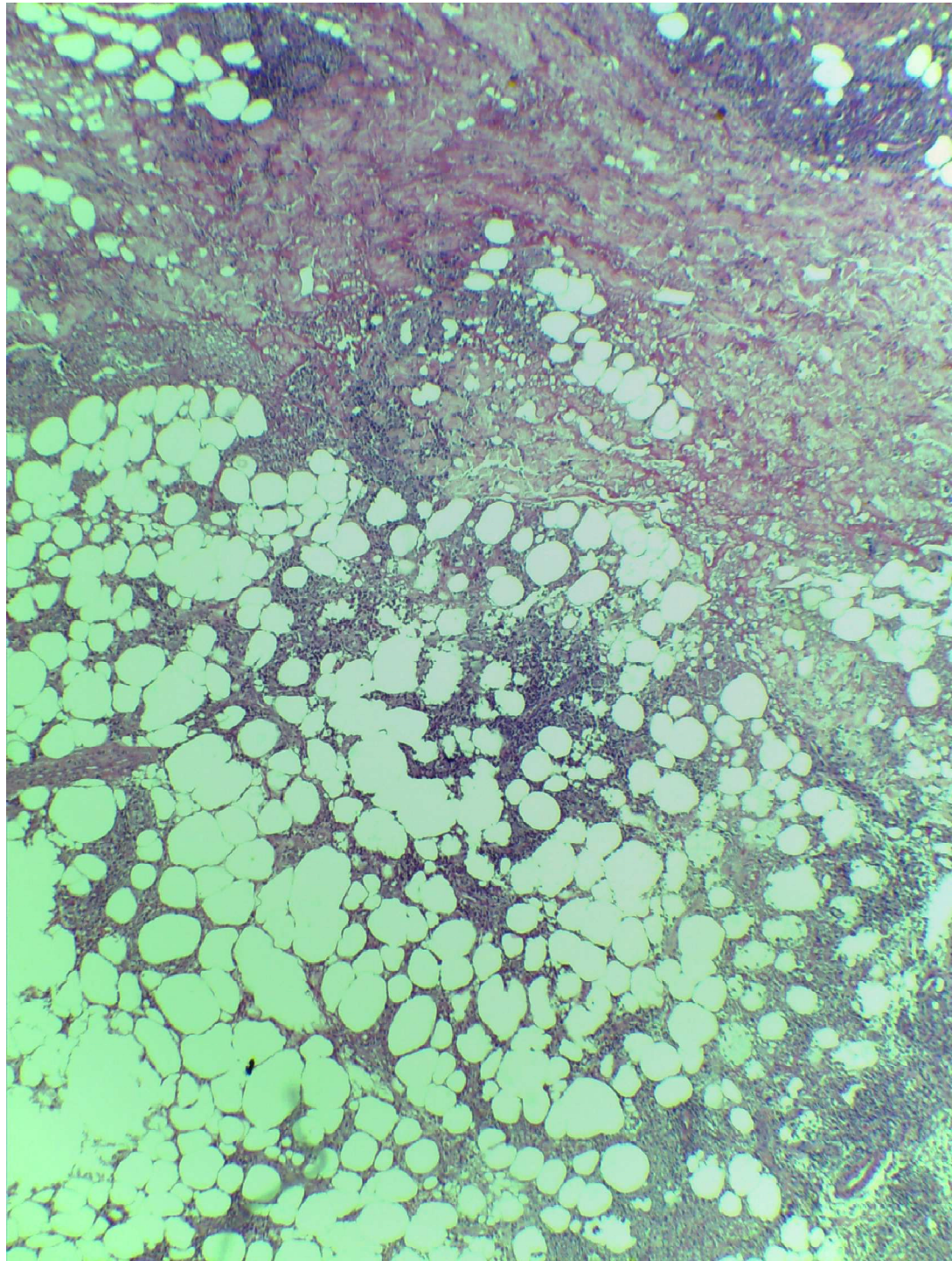
Daniela Takano

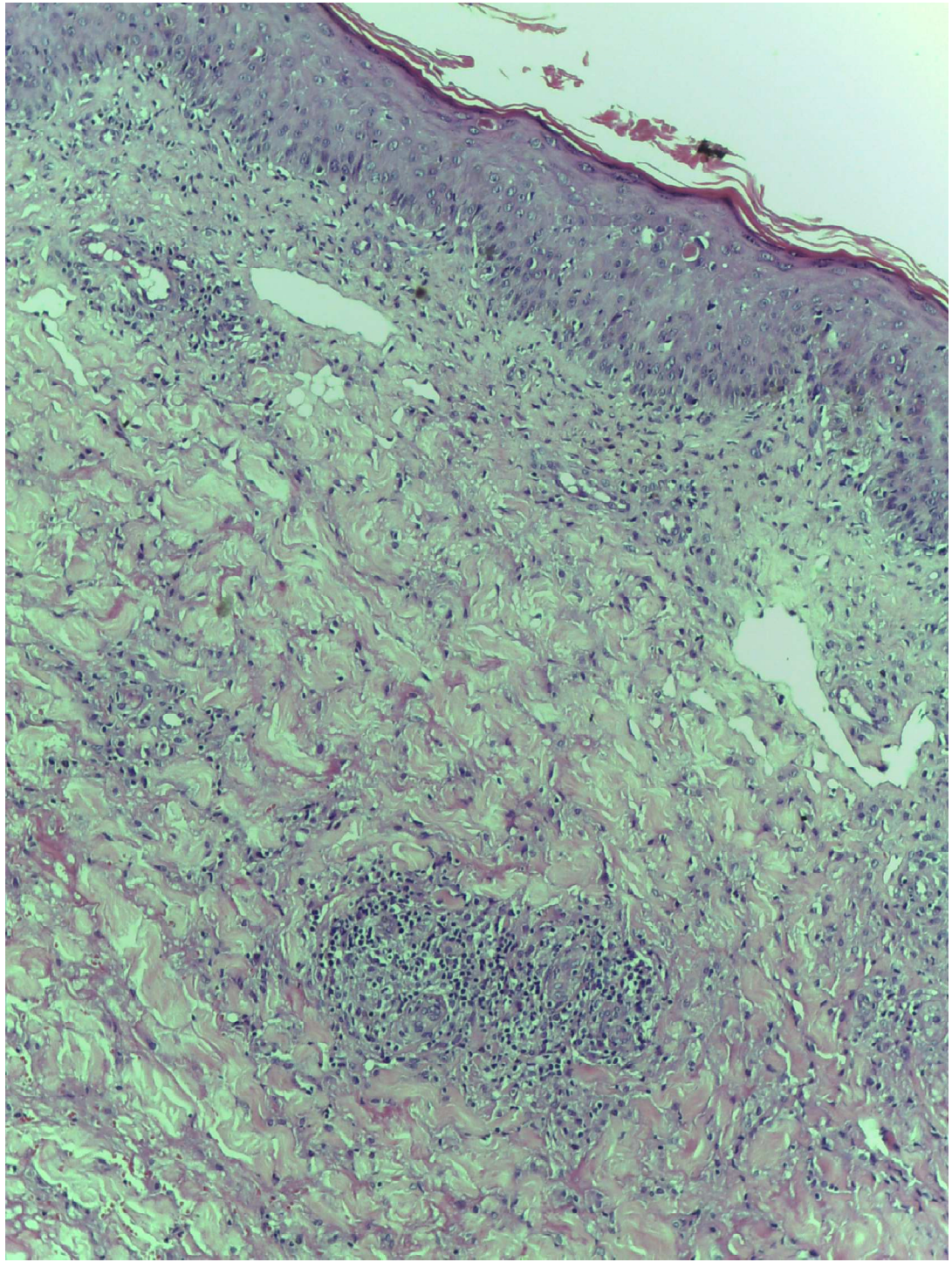
Caso 1 – 3751-14

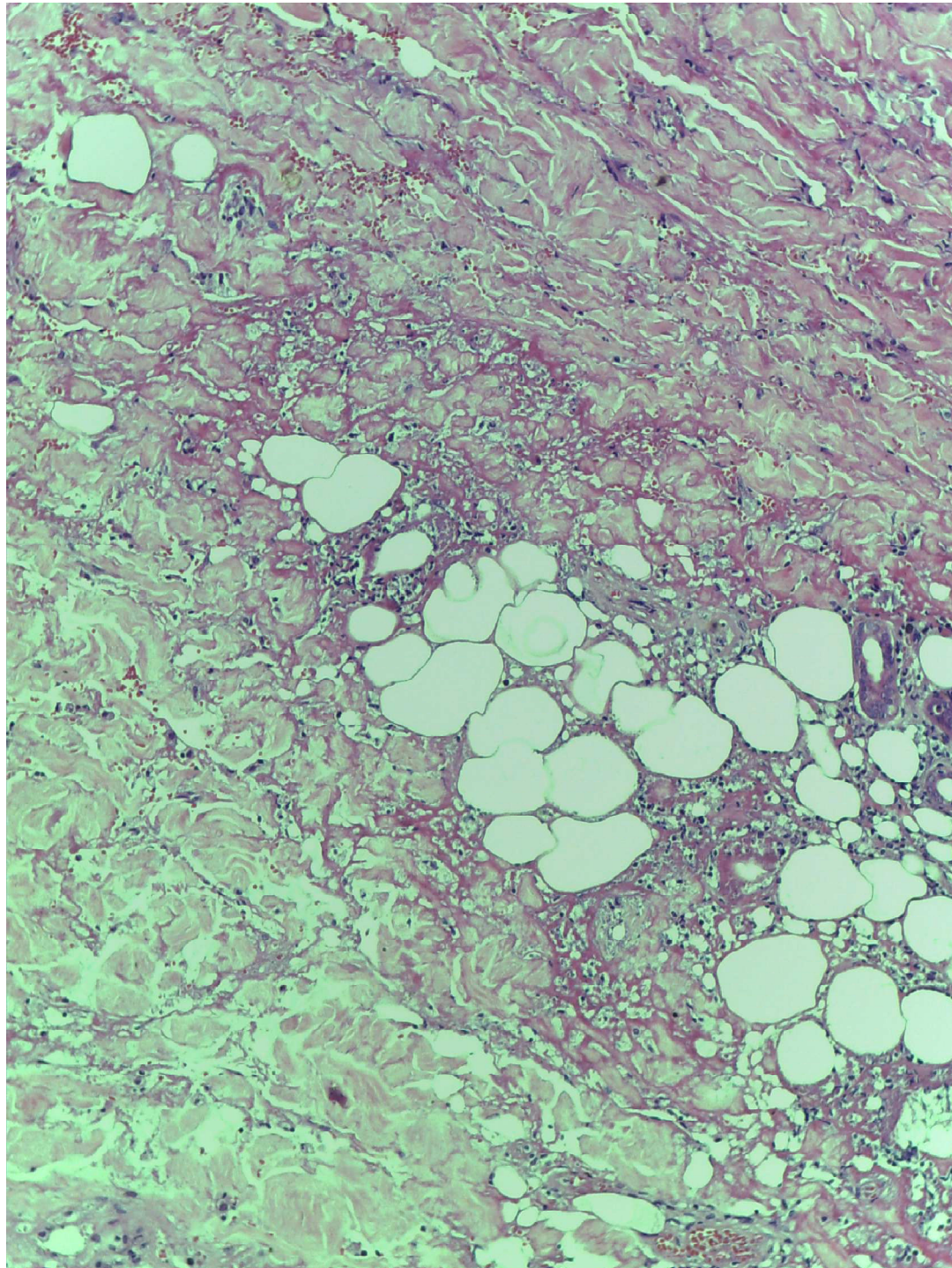
- Mulher, 28 anos, transplante renal ha 15 anos.
- Iniciou com quadro de edema, calor e hiperemia do membro inferior associada a febre.
- Realizou tratamentos com antibioticos com melhora parcial e retorno dos sintomas.



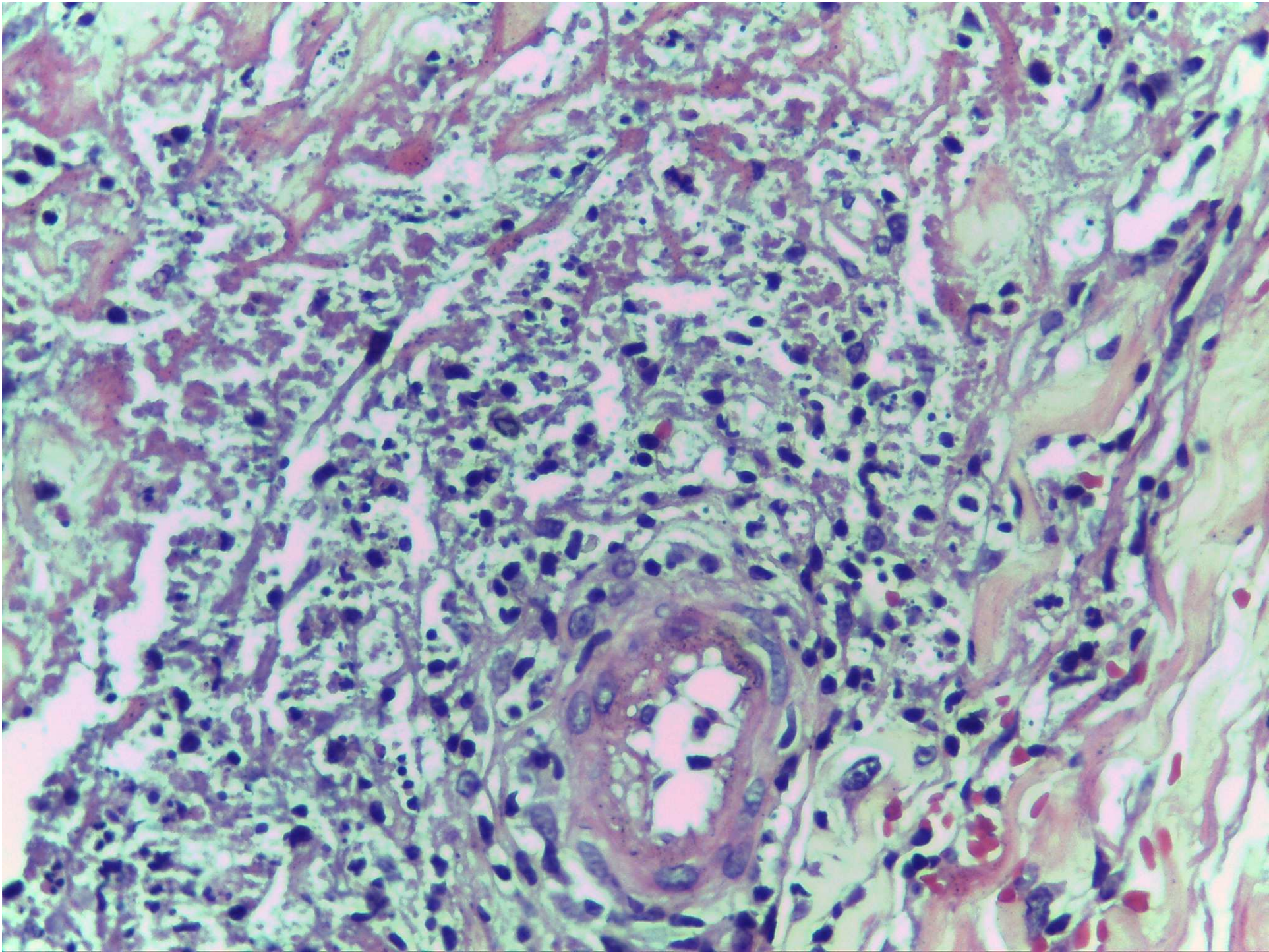


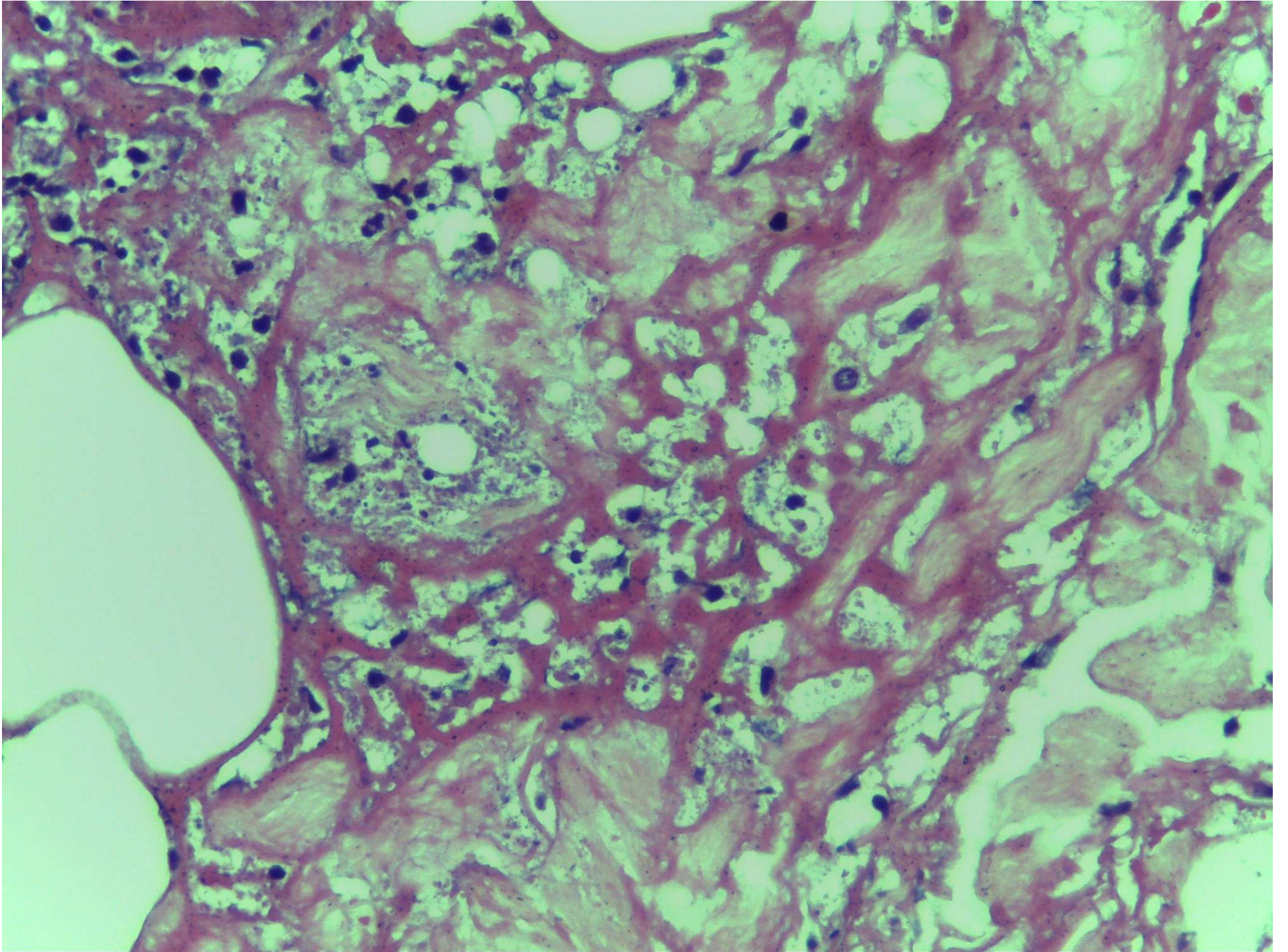


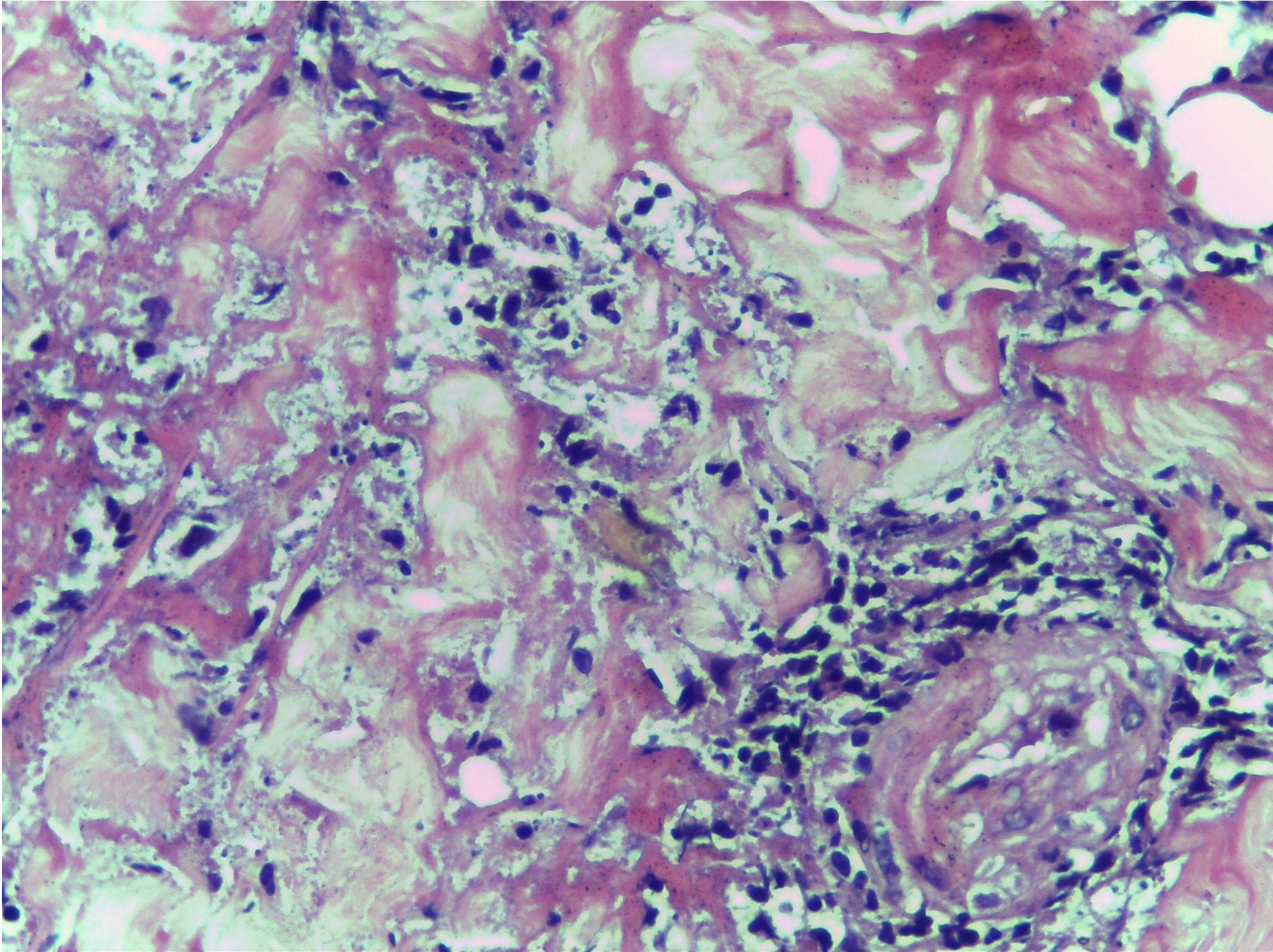












????

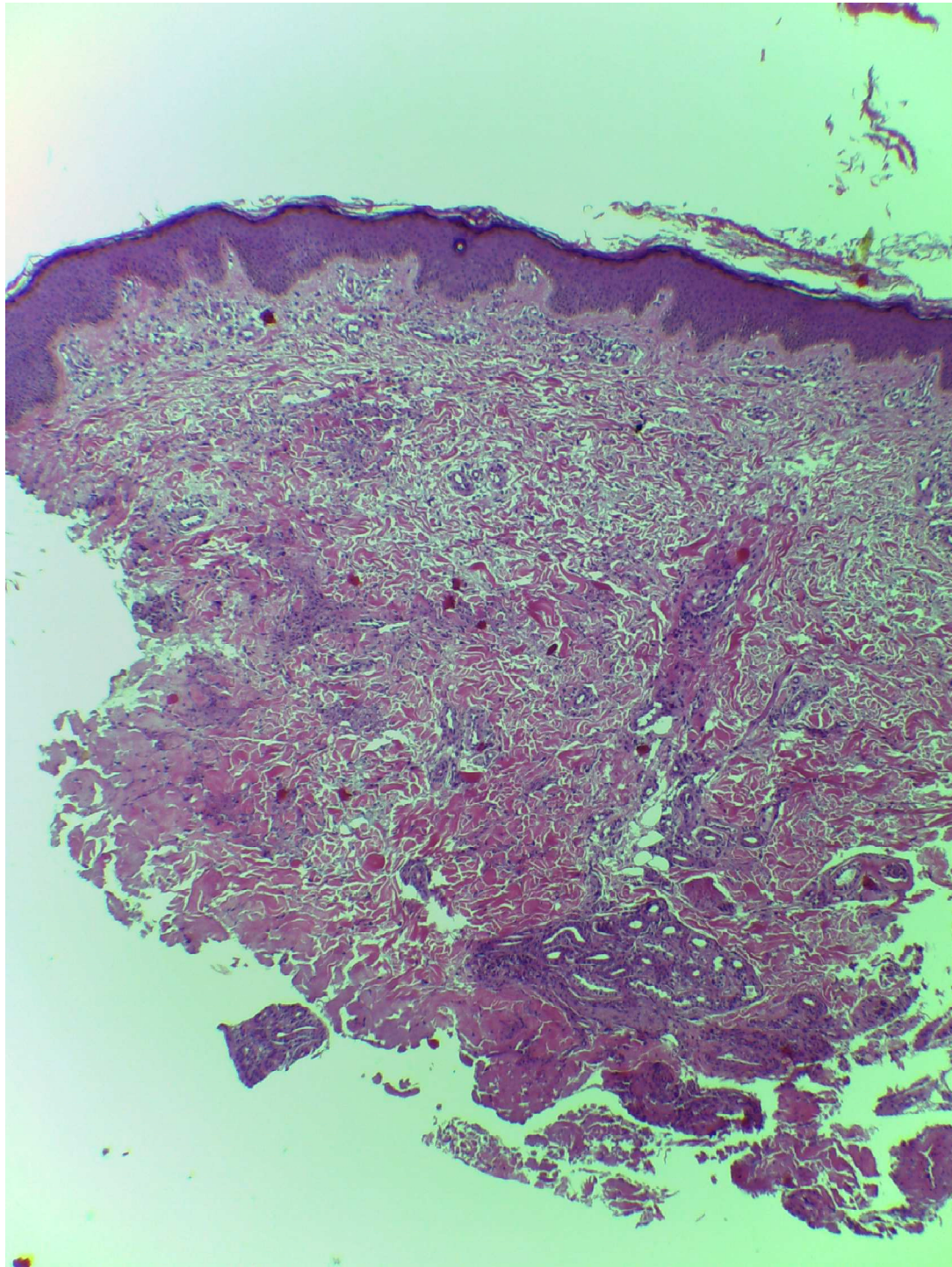
- Inflamacao perivascular e intersticial.
- Neutrofilos com leucocitoclasia.
- Necrose dermica e do subcutaneo.

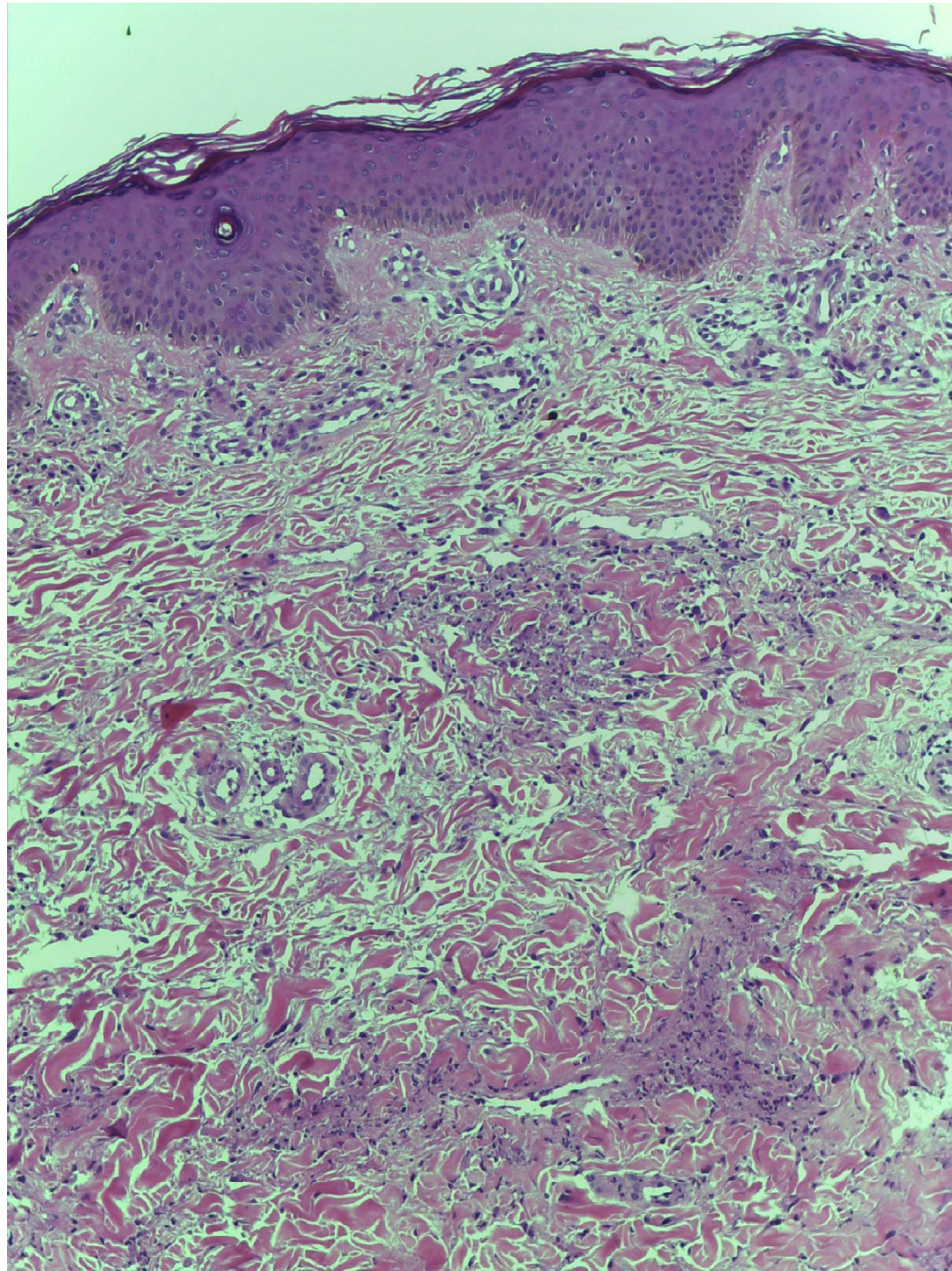
- Processo reativo com vasculite.

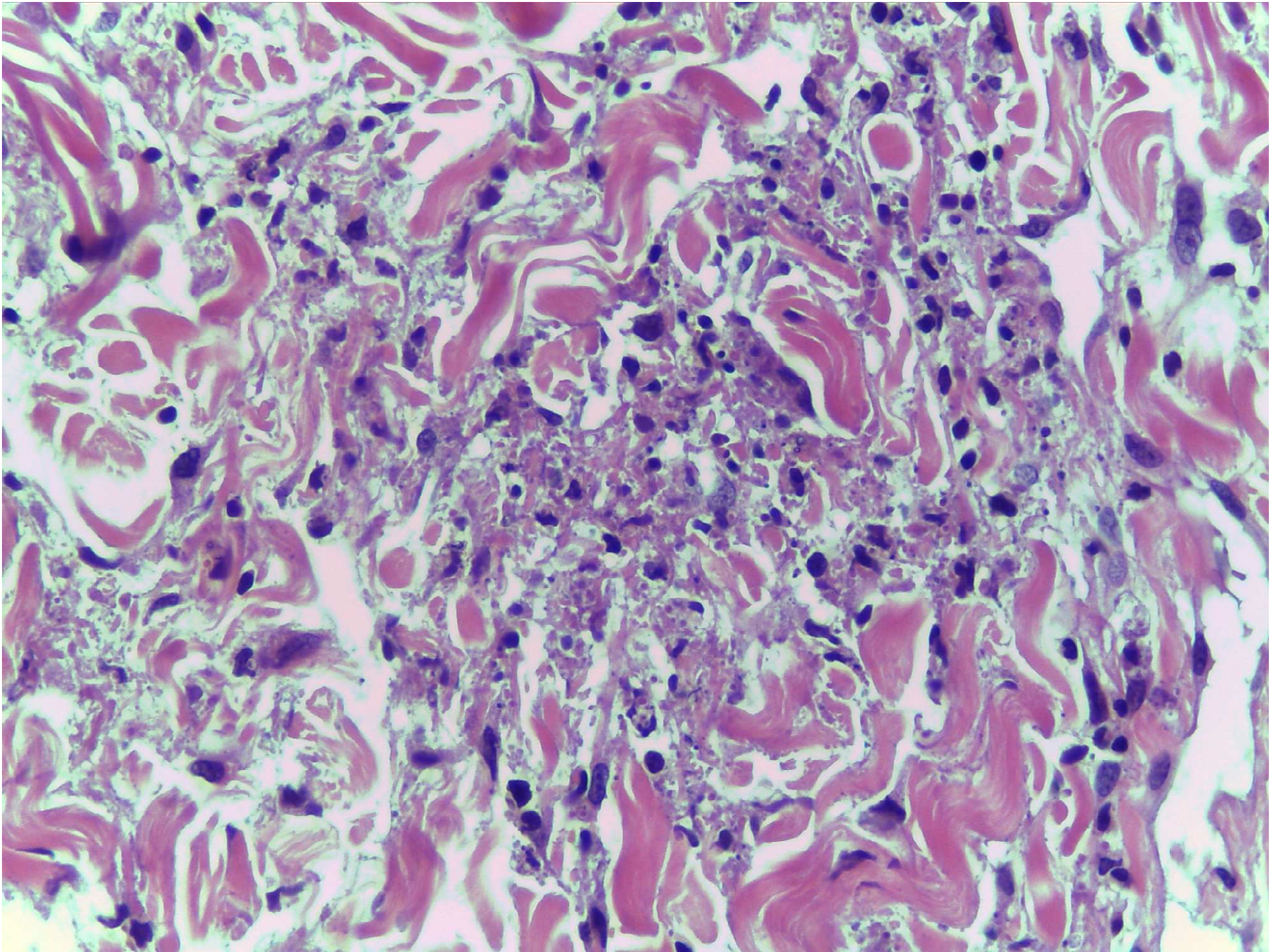
Caso 2 – 1006-15

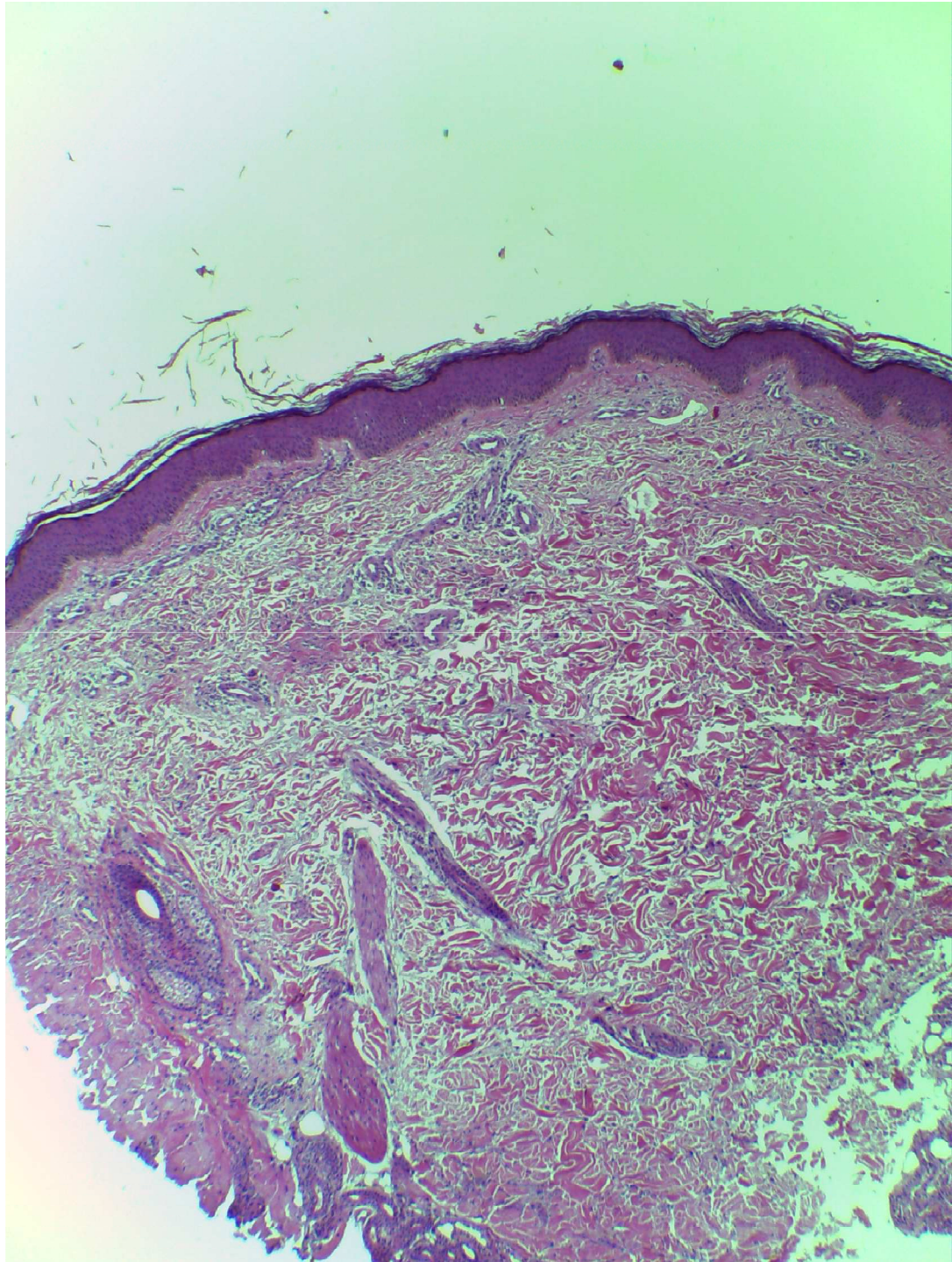
- Mulher, 28 anos, antecedente de SIDA.
- Apresenta placas violáceas disseminadas ha 2 meses. Nega prurido.

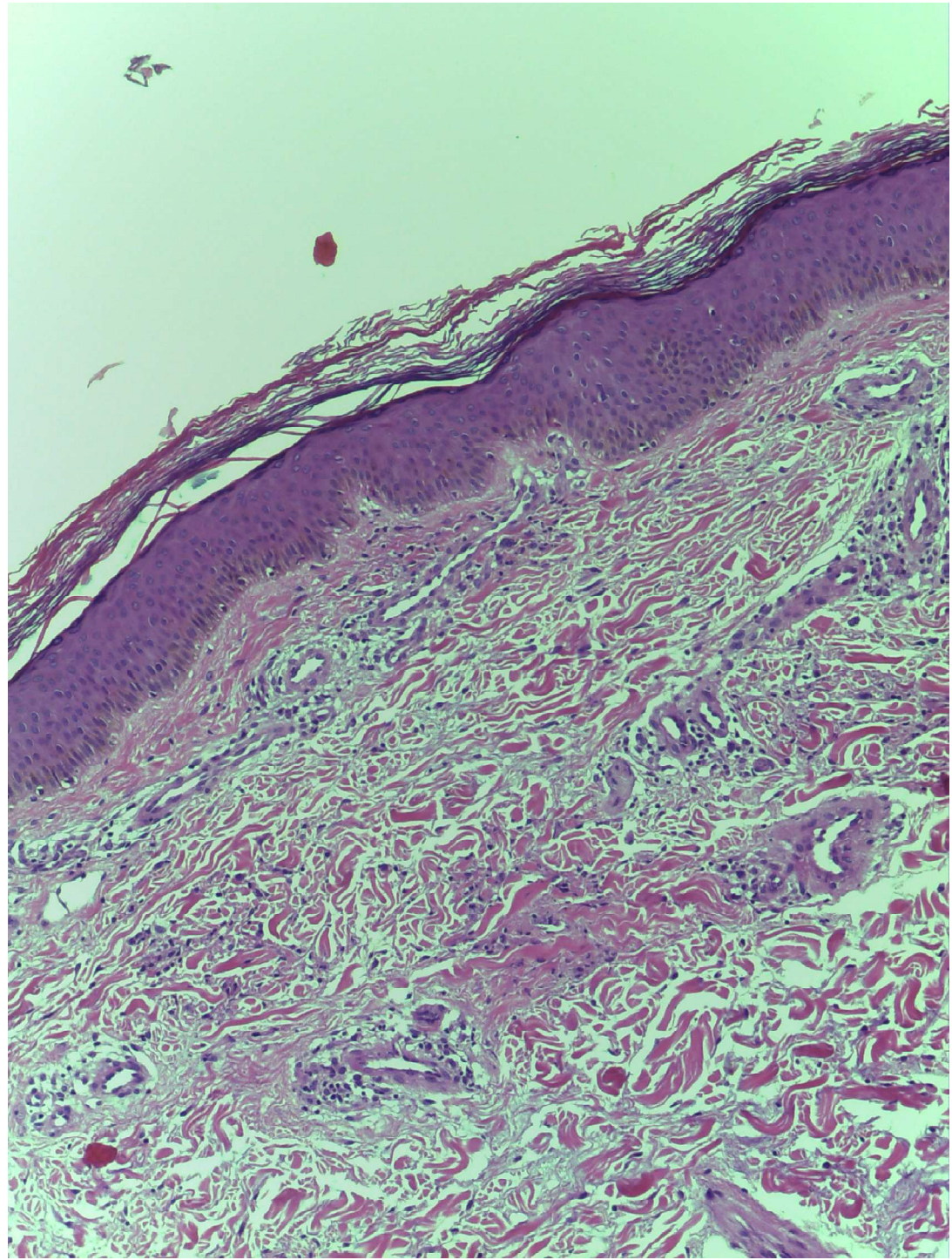


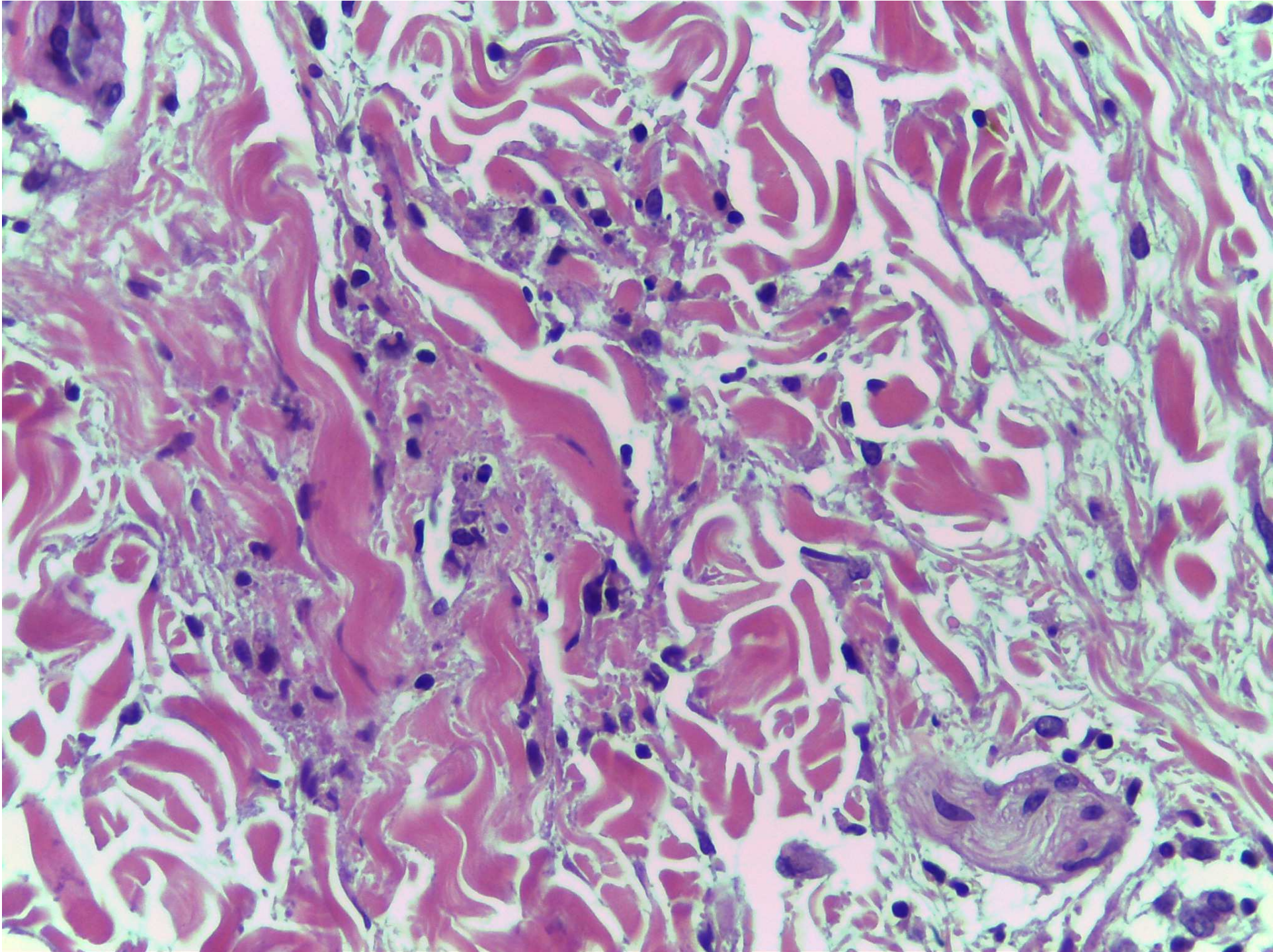












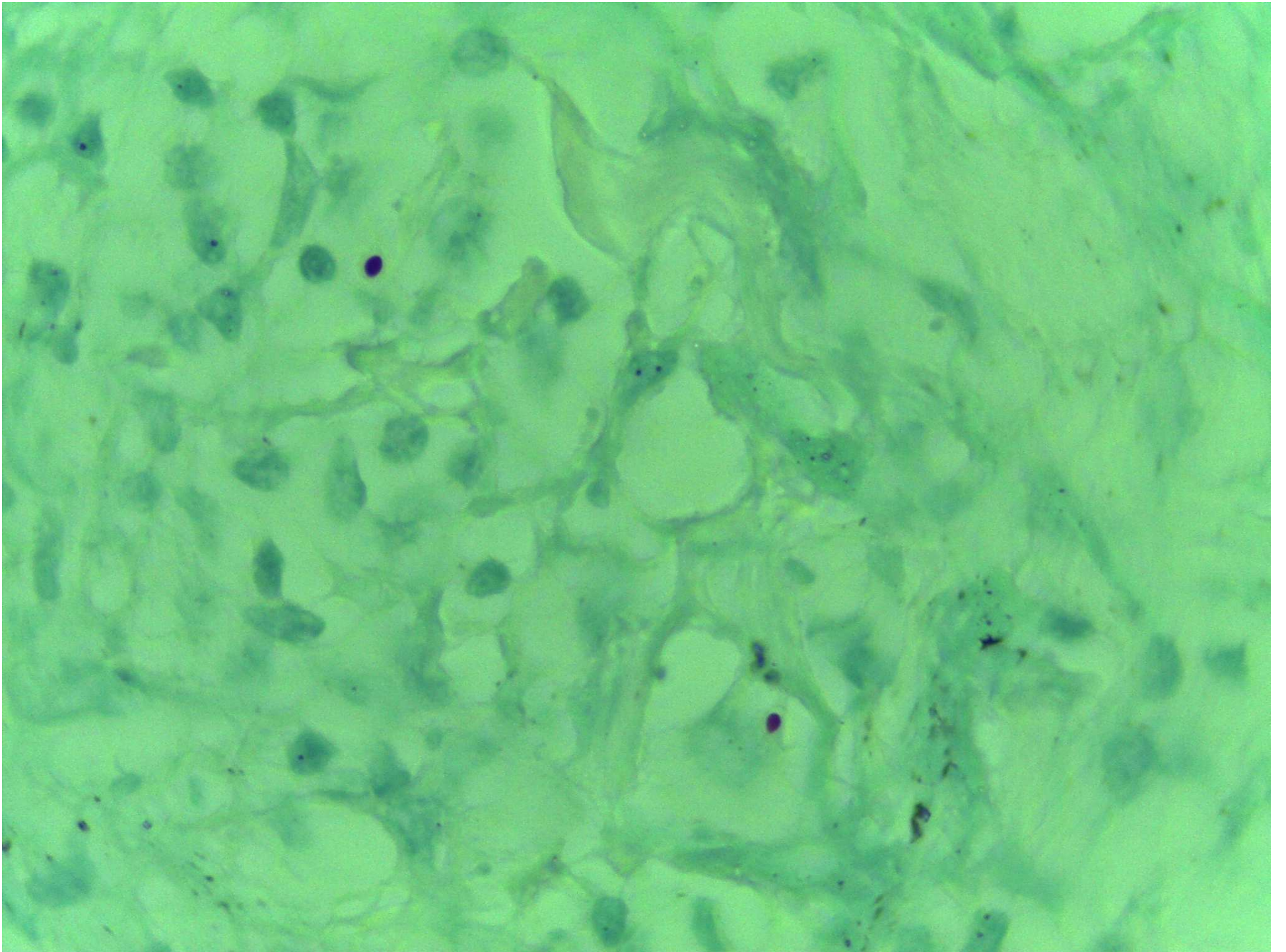
?????

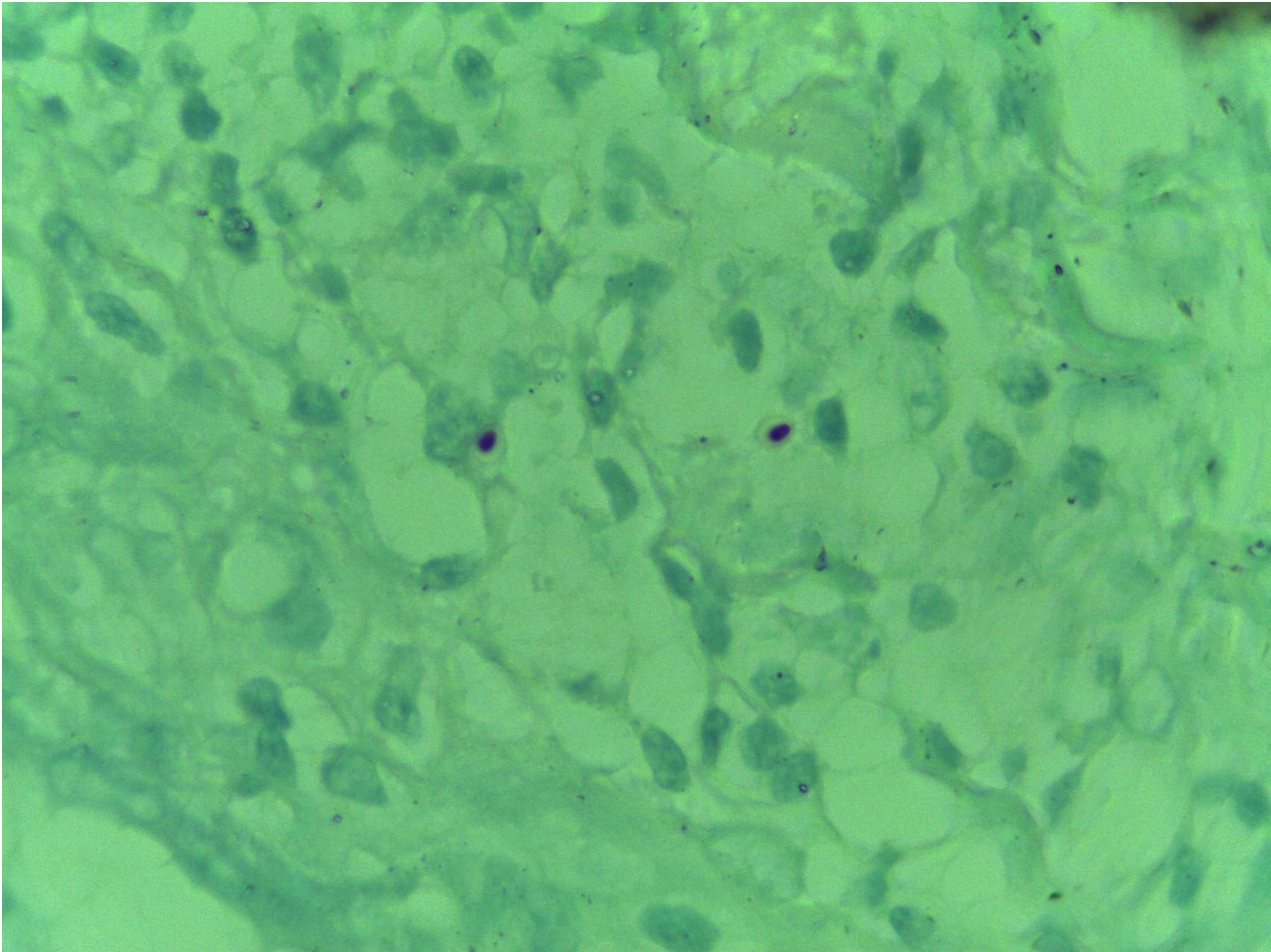
- *Déjà vu.*
- Inflamação intersticial neutrofílica com leucocitoclasia associada a necrose dérmica paciente **imunossuprimido**.



- Doença infecciosa oportunista.
- Colorações especiais.

Ziehl-Neelsen





## **Differentiation of histoplasma and cryptococcus in cytology smears: a diagnostic dilemma in severely necrotic cases.**

Ranjan R<sup>1</sup>, Jain D, Singh L, Iyer VK, Sharma MC, Mathur SR.

### **⊕ Author information**

#### **Abstract**

**OBJECTIVE:** The correct identification of fungal organisms is important for the appropriate clinical management of patients. It becomes difficult in necrotic smears when the tissue response is not clearly discernible. It is difficult to distinguish between histoplasma and cryptococcus in severely necrotic cases, where both appear as variably sized clear refractile haloes.

**METHODS:** Four cases of adrenal necrotic histoplasma infection were studied and the morphology was compared with that of non-necrotic histoplasmosis and cases of cryptococcal infection. Eleven cases were analysed in fine needle aspiration cytology (FNAC) smears. Ziehl-Neelsen (ZN) stain was performed to exclude tuberculosis in necrotic smears. A clinical and serology correlation was performed where available.

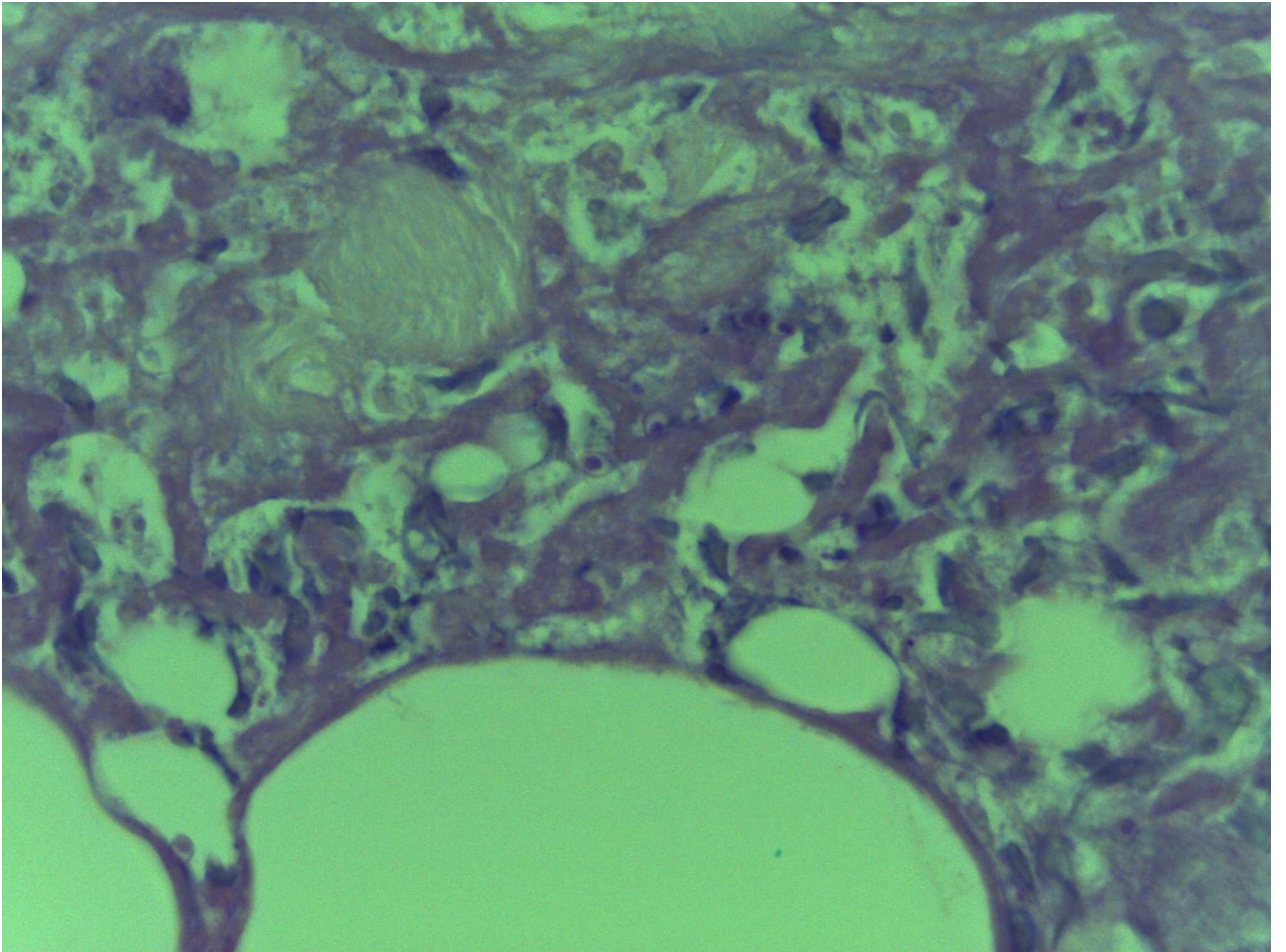
**RESULTS:** Necrotic cases of histoplasma infection revealed negative refractile clear haloes similar to those of cryptococcus. Histoplasma showed methylene blue-stained organisms in ZN stains, whereas the cryptococcus cases were negative. Similar methylene blue-stained organisms were seen in non-necrotic histoplasma infection.

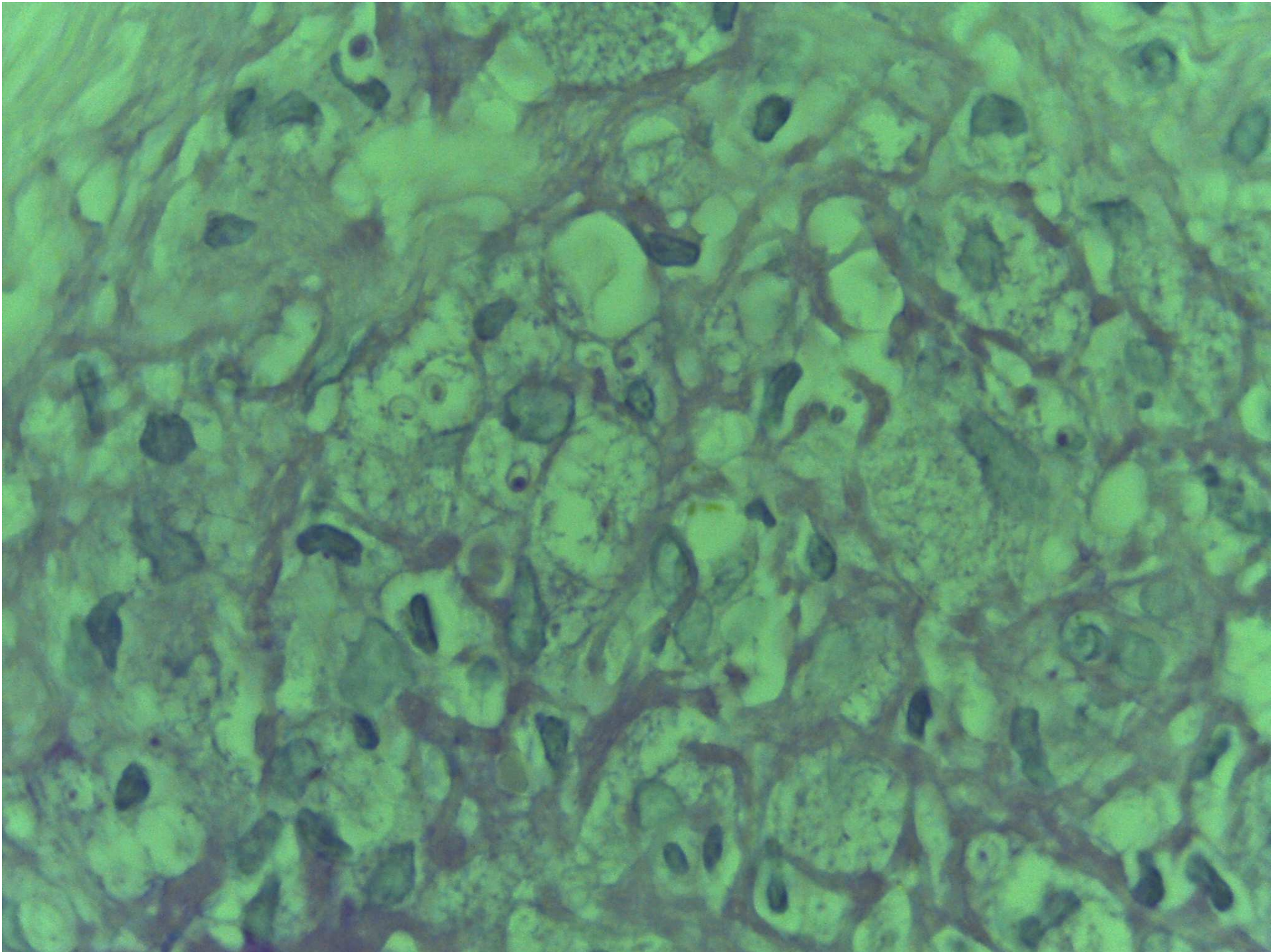
**CONCLUSION:** As a result of morphological overlap between cryptococcus and histoplasma, the distinction between the two fungi can be difficult in many cases. ZN staining appears to have a role in the differentiation of these fungi in severely necrotic cases. This observation needs to be validated on a larger number of cases with complete correlation with clinical, serology and treatment records.

© 2014 John Wiley & Sons Ltd.

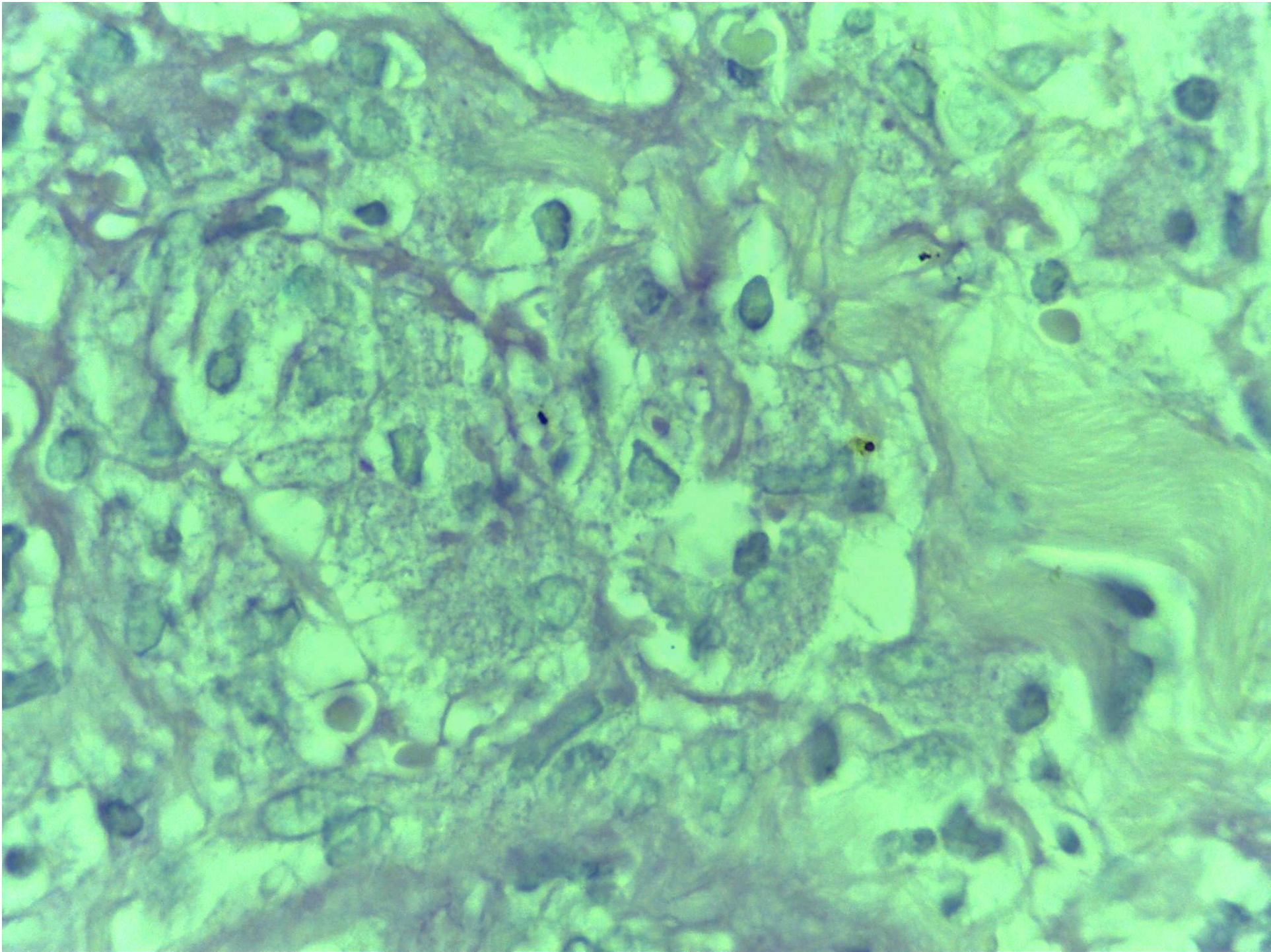
**KEYWORDS:** cryptococcus ; histoplasma ; Ziehl-Neelsen stain; cytology; methylene blue; necrosis

PAS

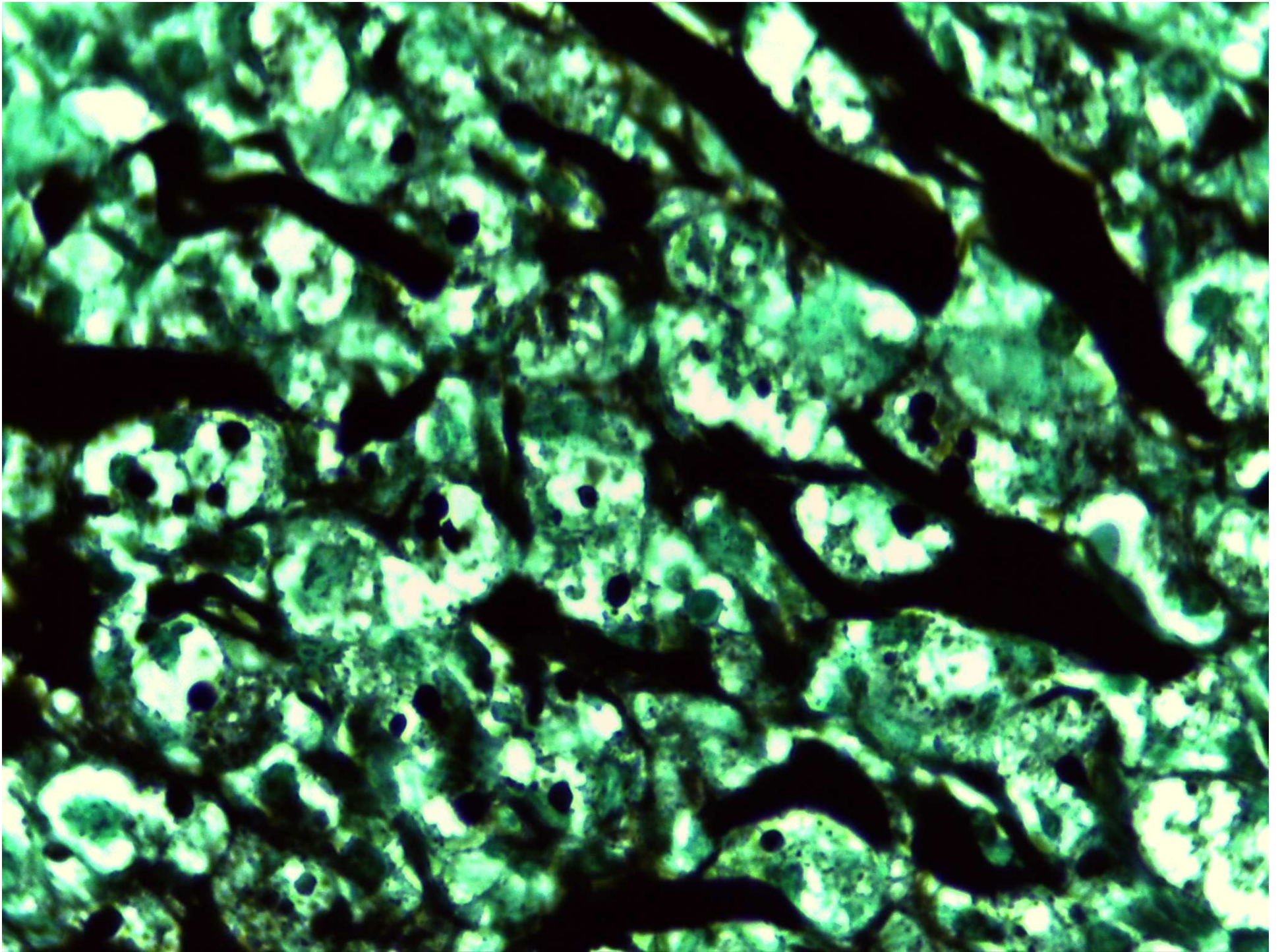


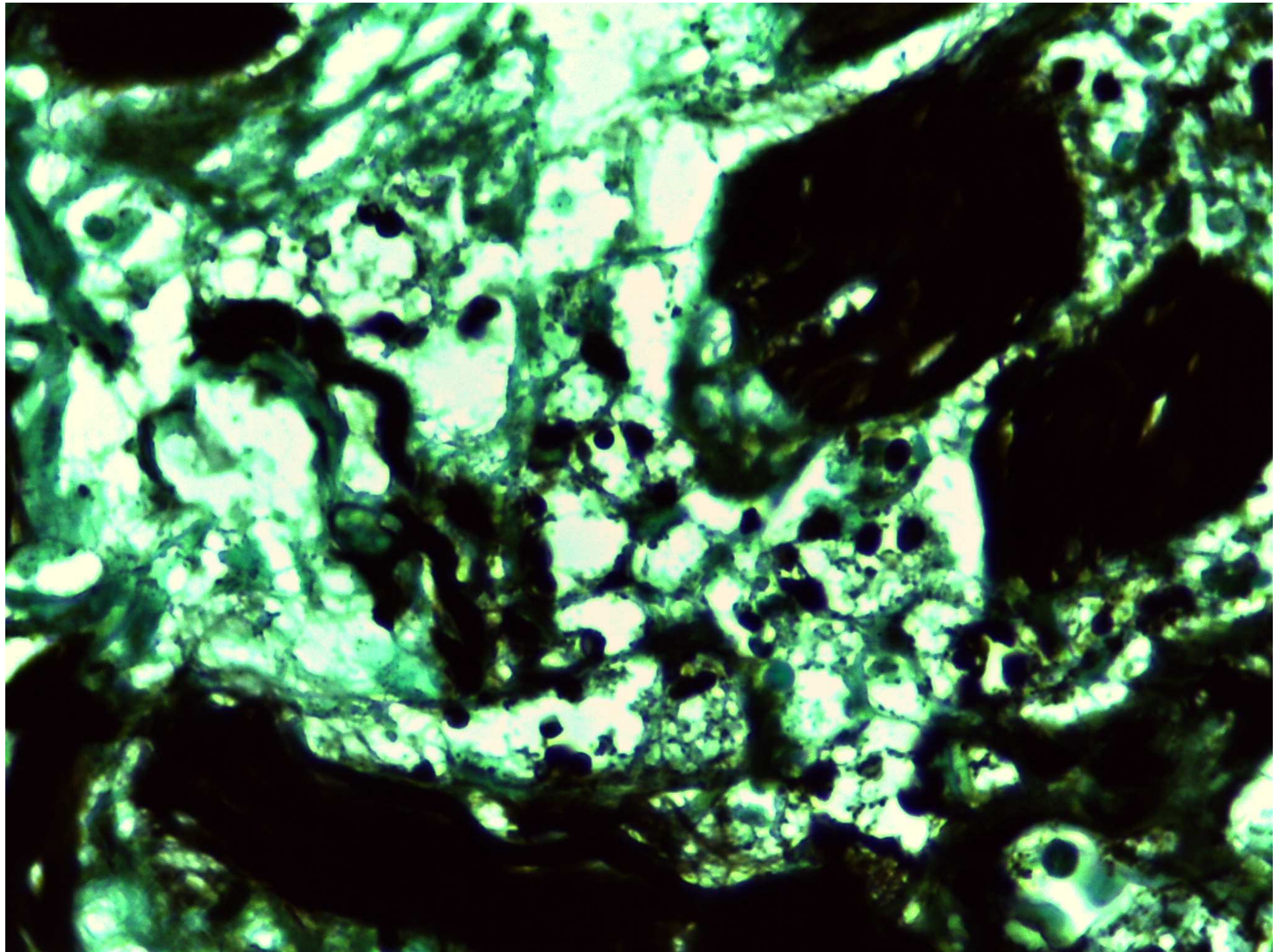






Grocott





Diagnostico

# Histoplasmose

- Doença pulmonar, raramente cutânea.
- Auto-limitada em imunocompetente.
- Disseminada e progressiva em imunocomprometidos.
- Lesões cutâneas: úlceras, papulas, nódulos, lesões molusco-simile, lesões eritema nodoso-simile.
- Pequenos esporos ovoides circundados por um halo claro (pseudocapsula).
- Colorações especiais: Ziehl-Neelsen, PAS, Grocott.

- Granulomas epitelioides
- Micro-organismos intracelulares.

- Inflamacao neutrofilica com leucocitoclasia e necrose dermica.
- Micro-organismos no intersticio.

Obrigada