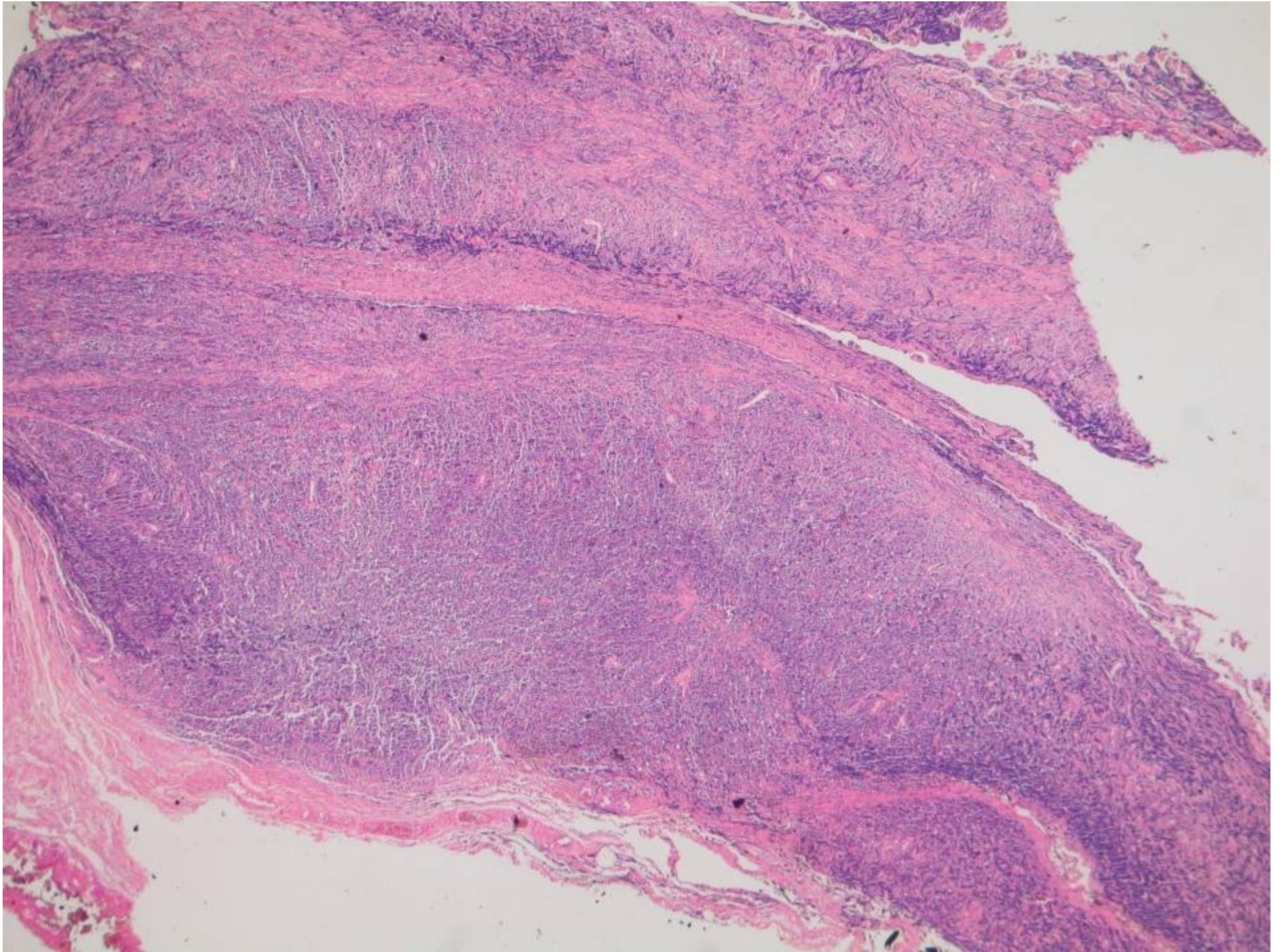

CASO DO MÊS

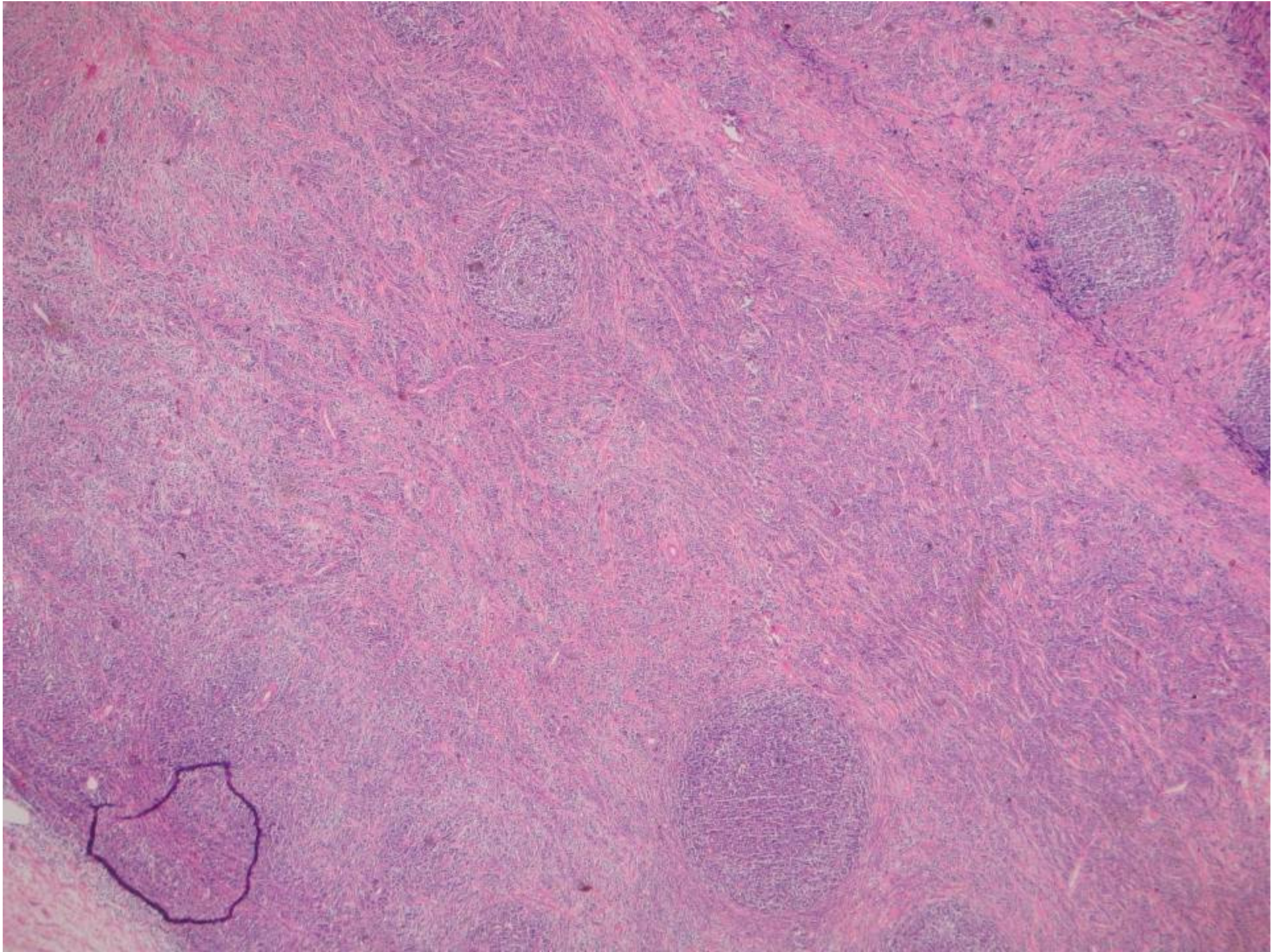
Sociedade Brasileira de Patologia

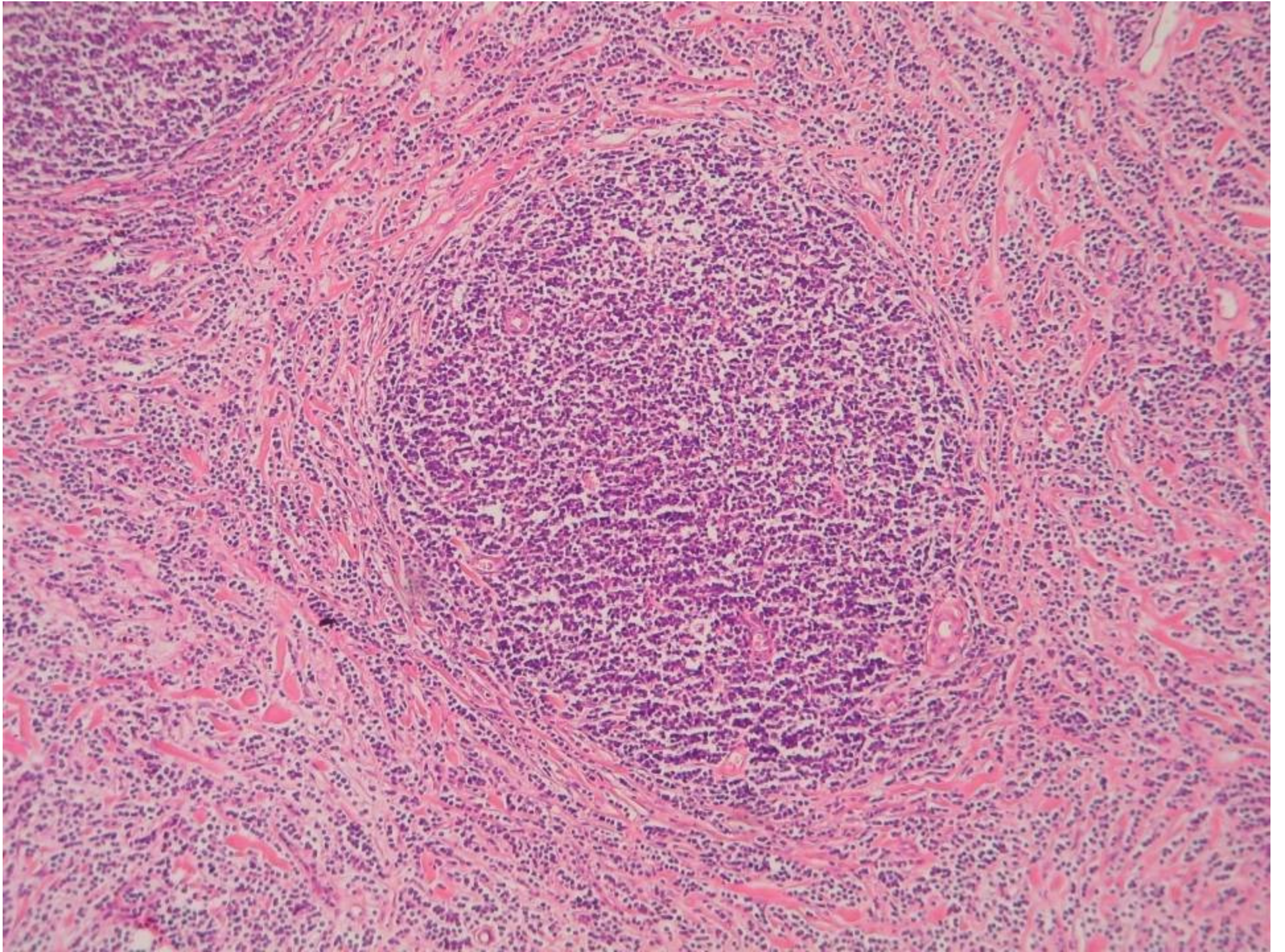
Rodrigo Vismari de Oliveira

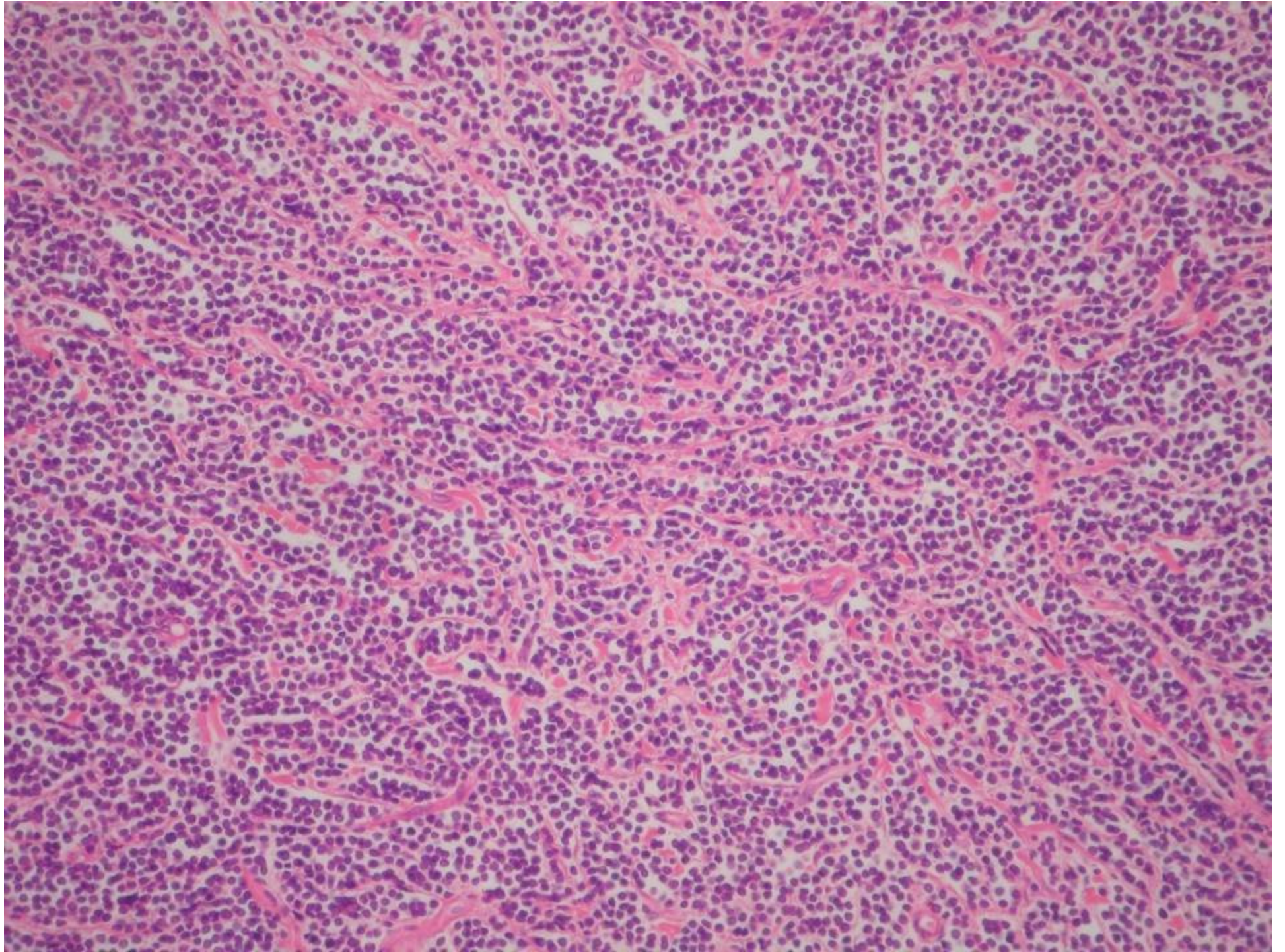
DADOS CLÍNICOS

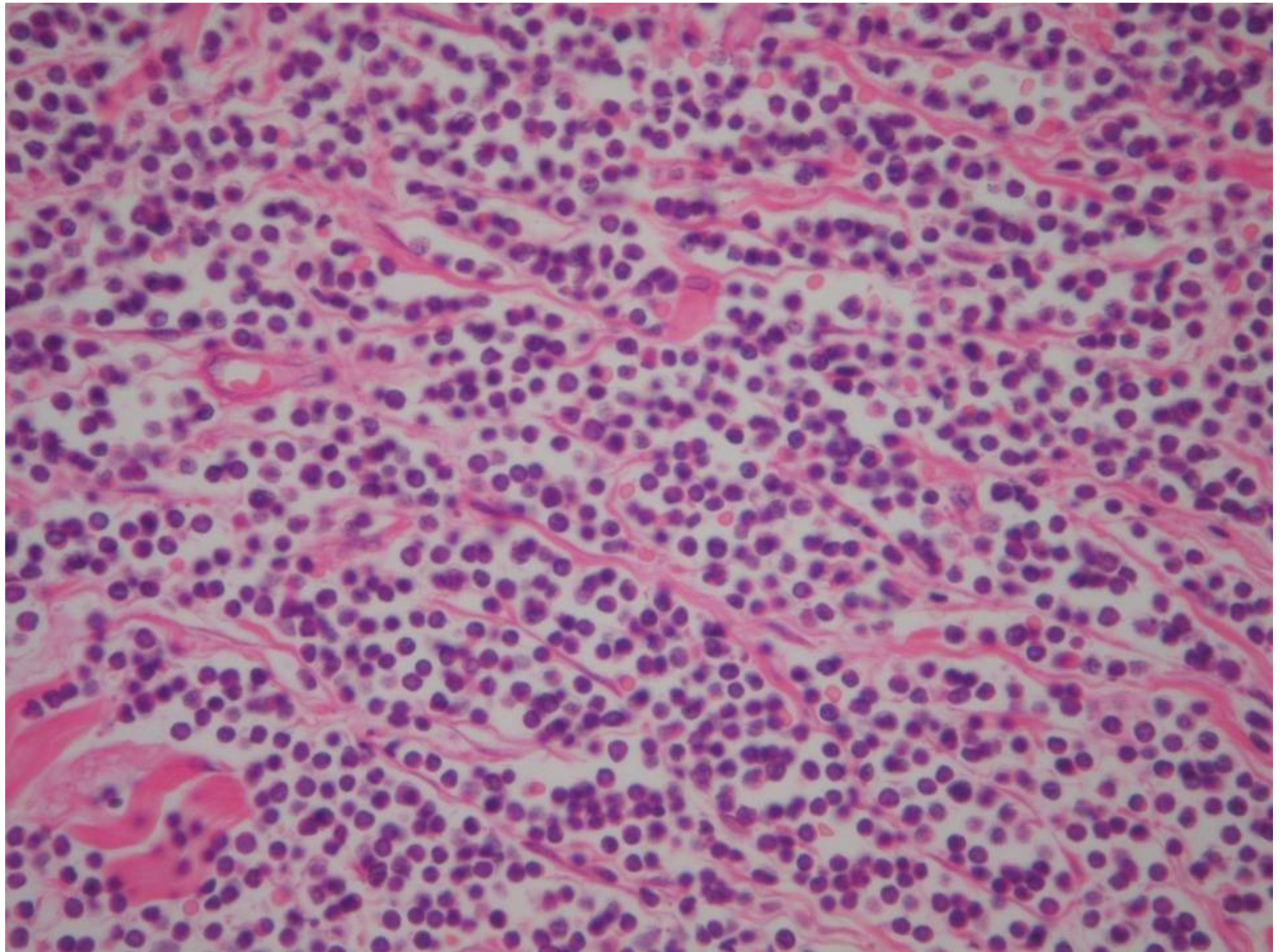
- Masculino, 21 anos
 - Produto de exérese de lesão de pele enviada pela Cirurgia Plástica sem informações clínicas
 - Lesão enviada como “tumor de pele”, medindo 4,5 x 3 x 0,5 cm
-

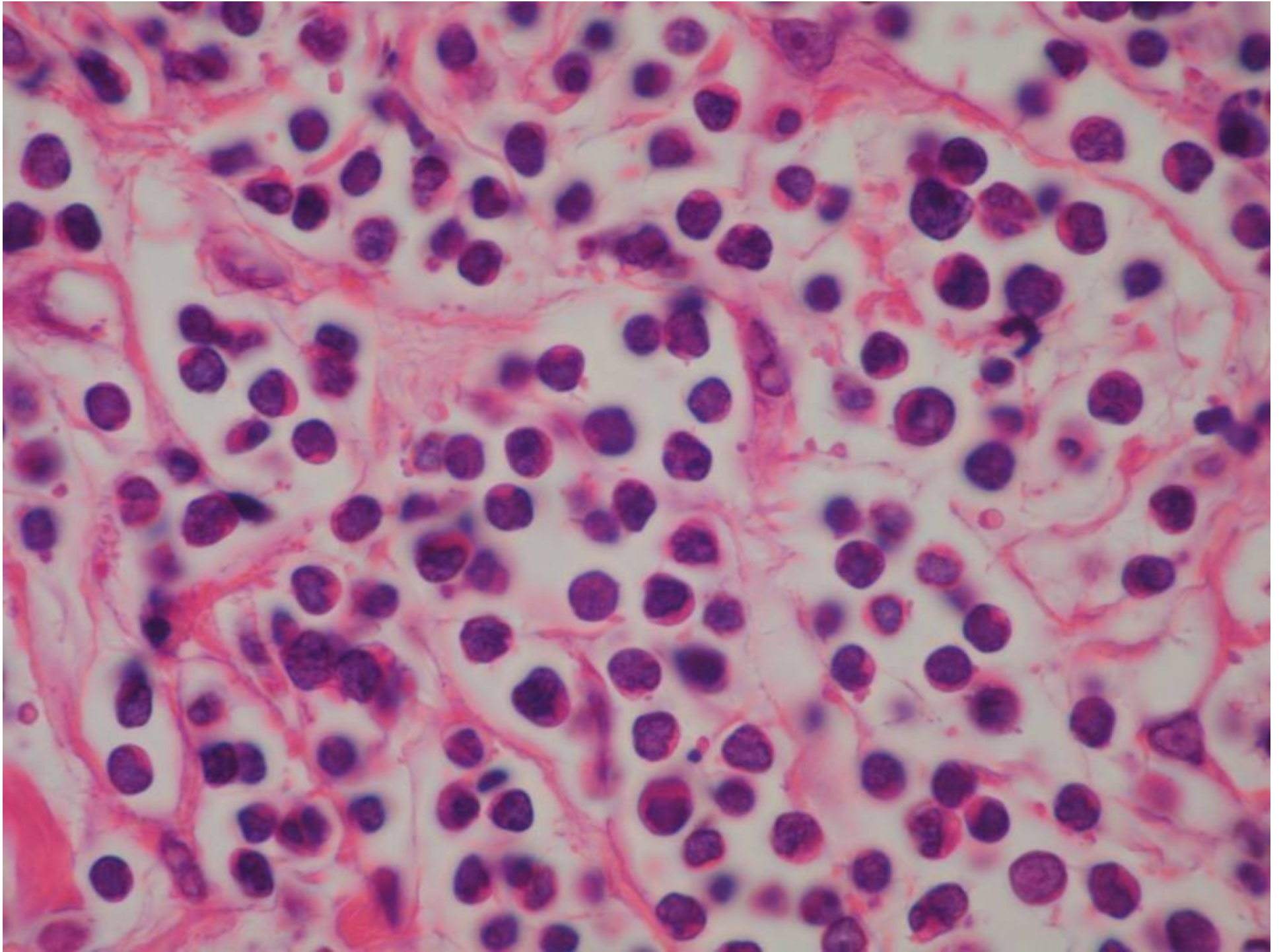


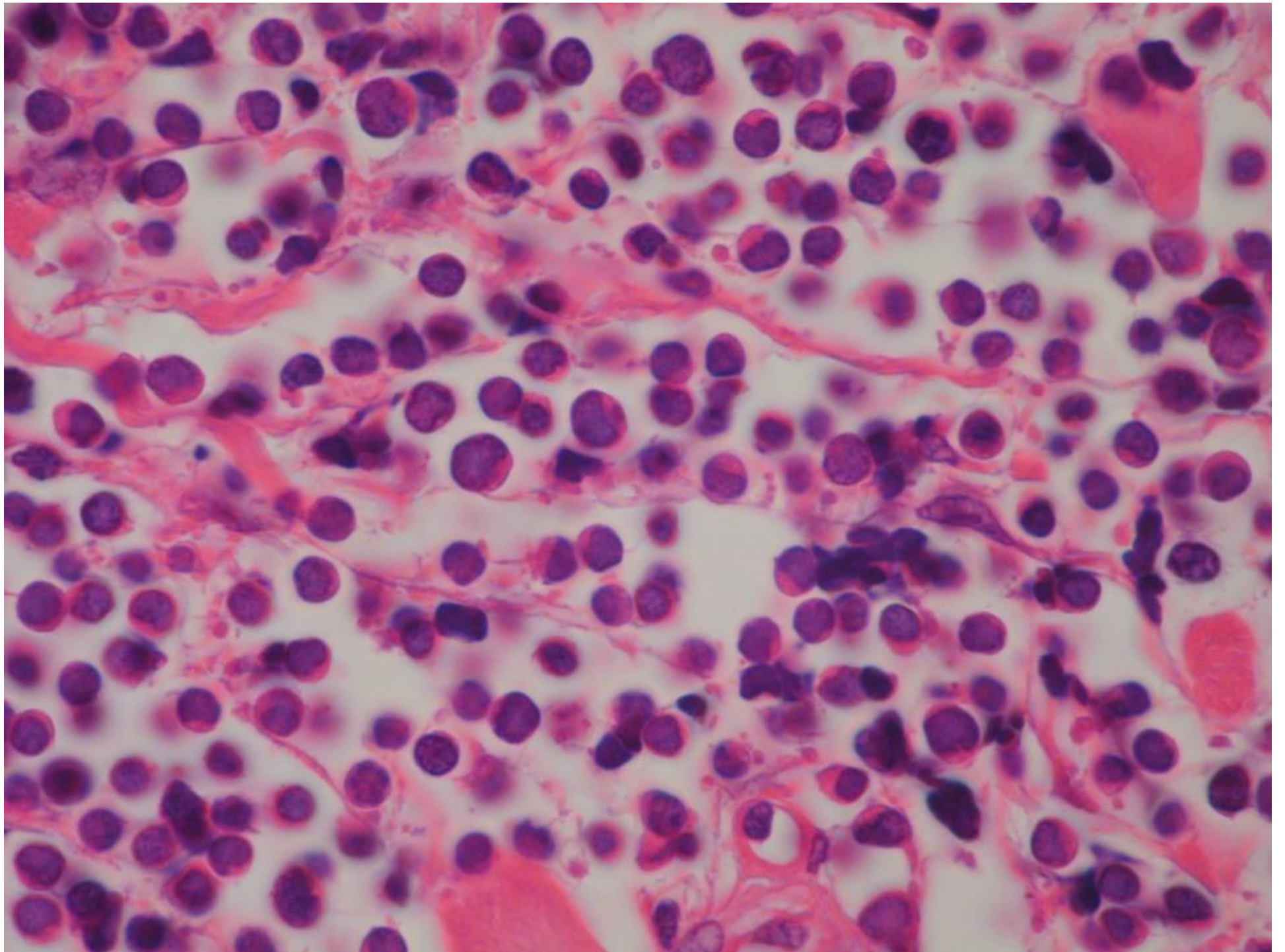






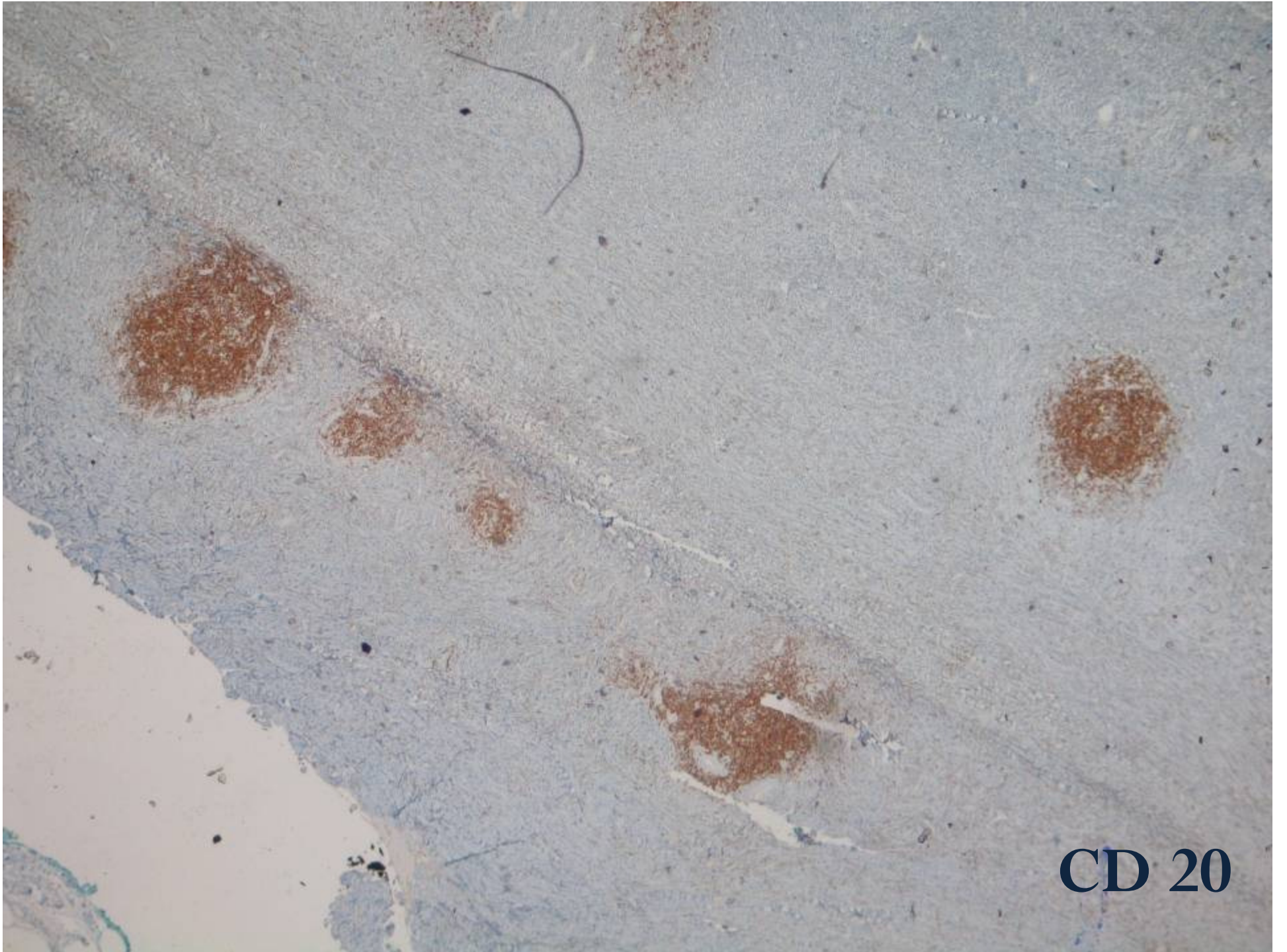




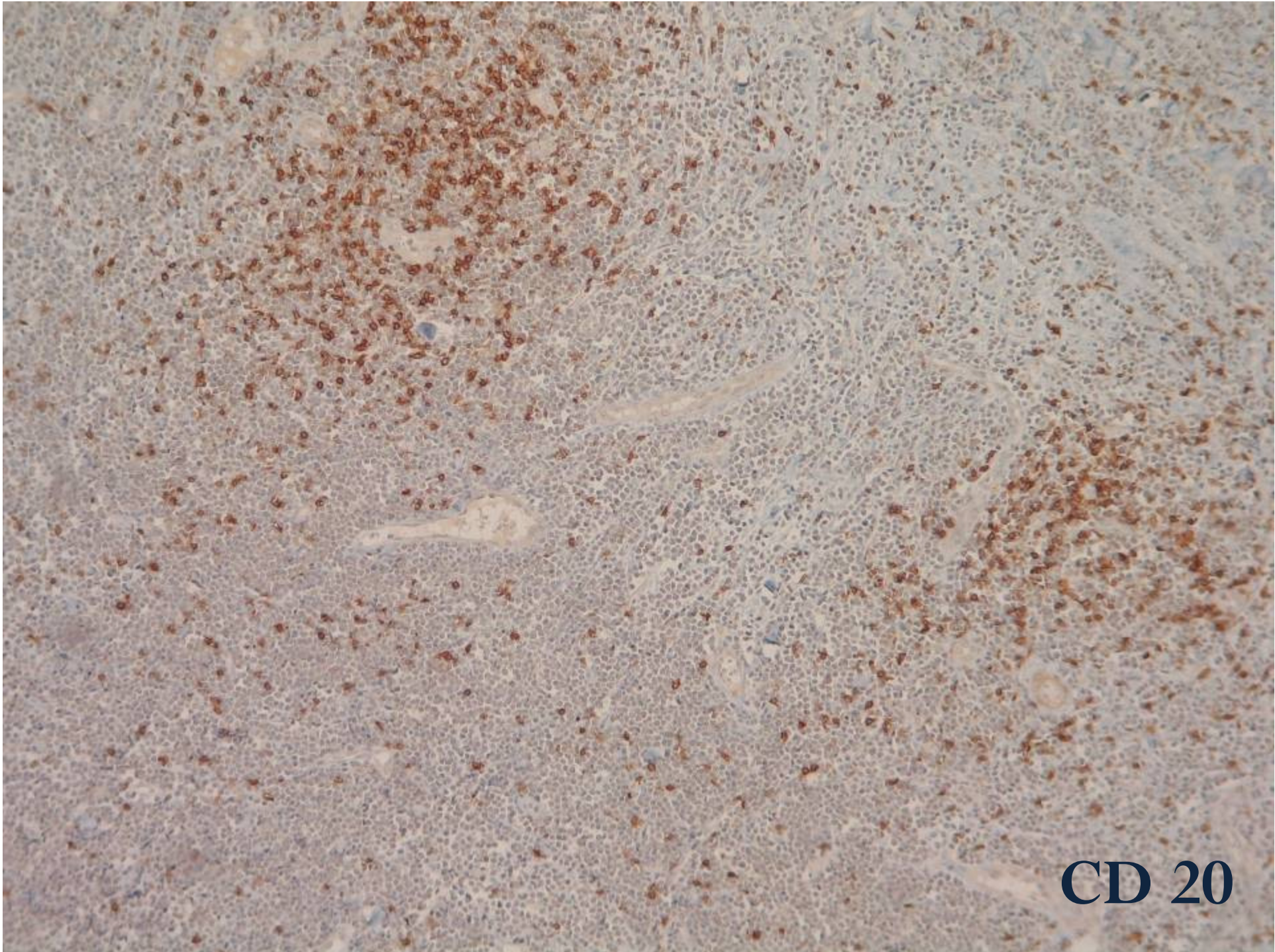


Hipóteses diagnósticas

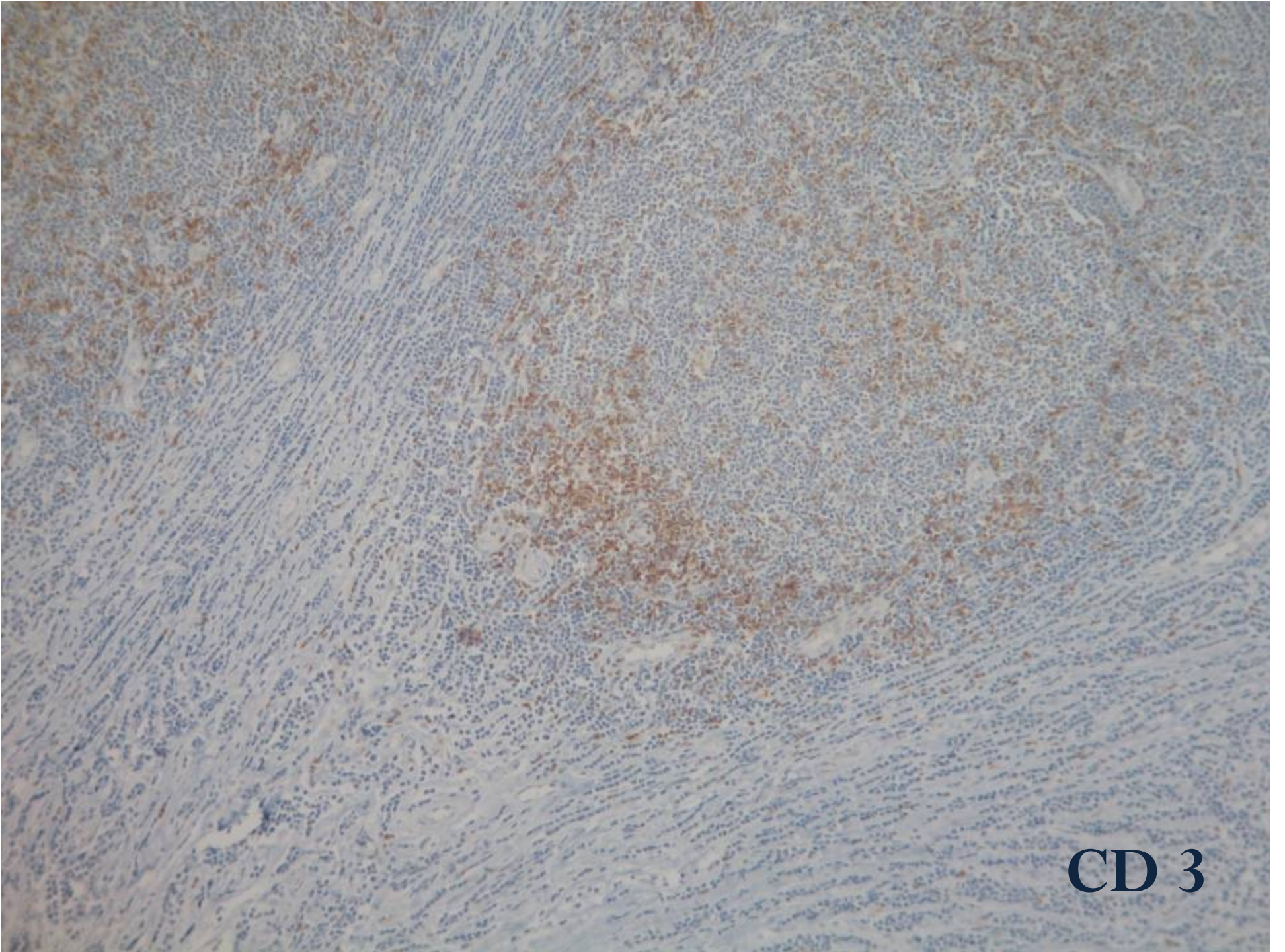
- Linfoma não-Hodgkin de baixo grau histológico ?
 - Linfoma folicular? Manto blastóide?
 - expressão de imunoglobulinas?
 - Linfoma linfoblástico/LLA ?
 - Sarcoma granulocítico?
-



CD 20



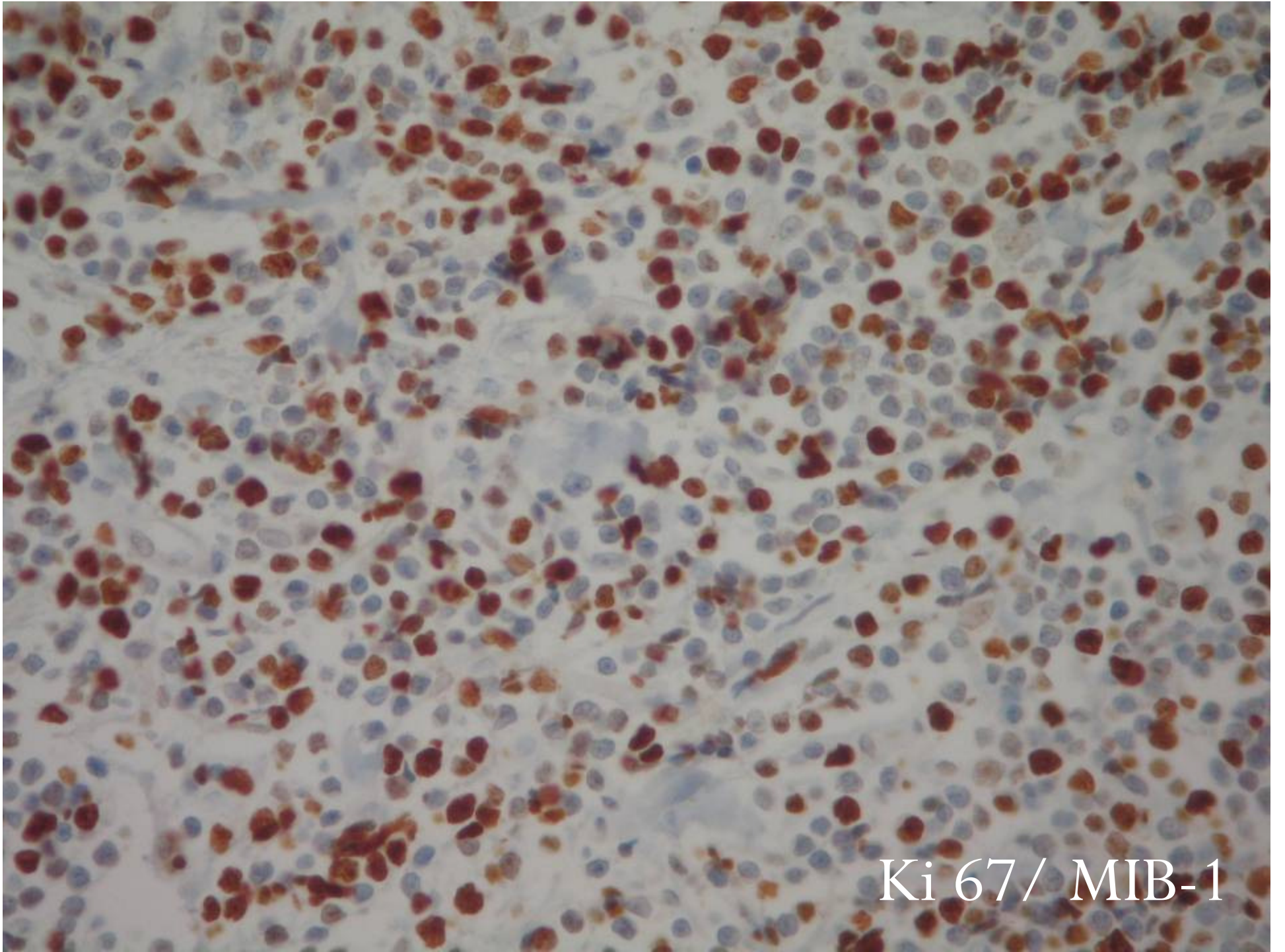
CD 20



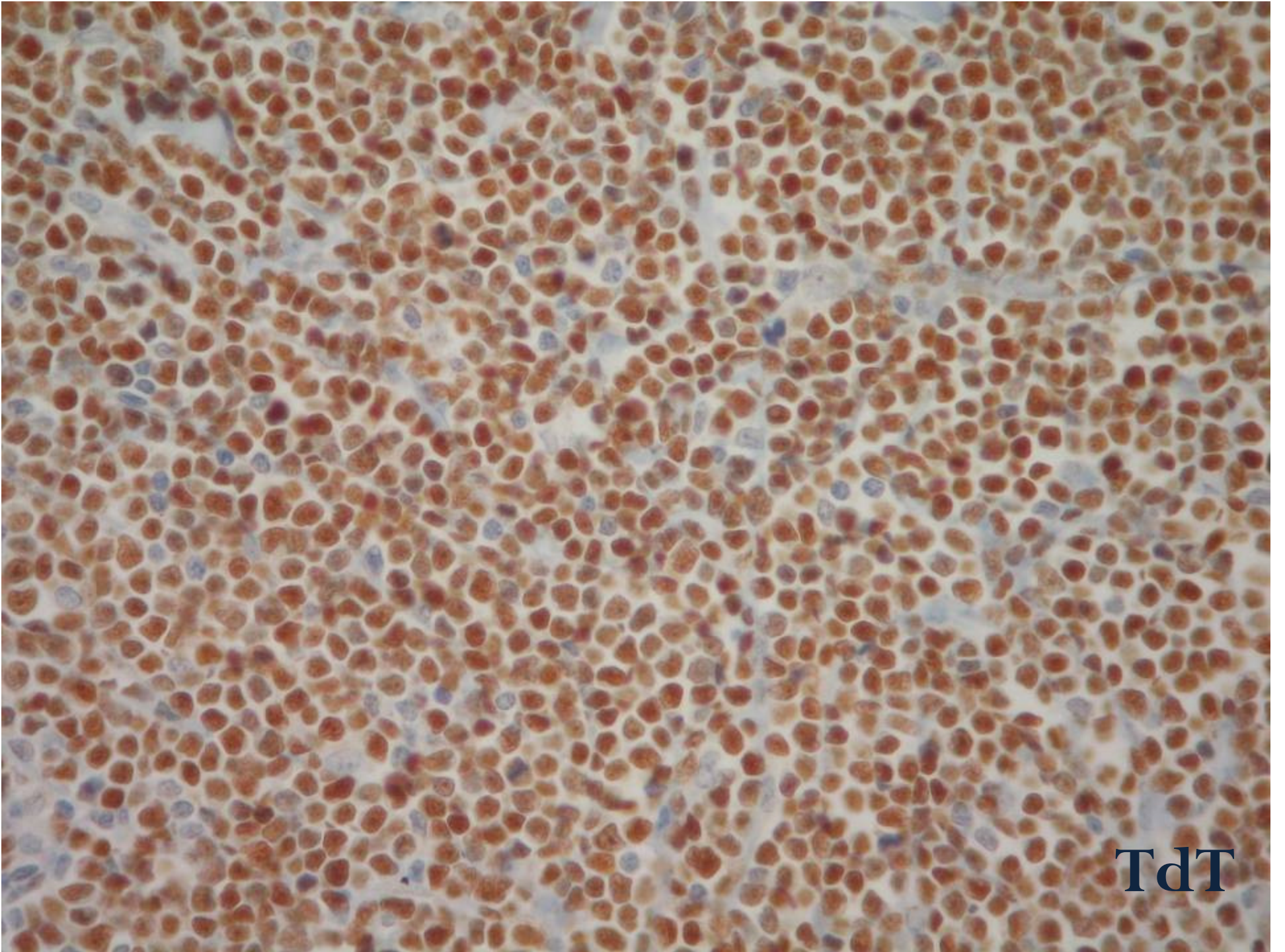
CD 3

Marcadores negativos

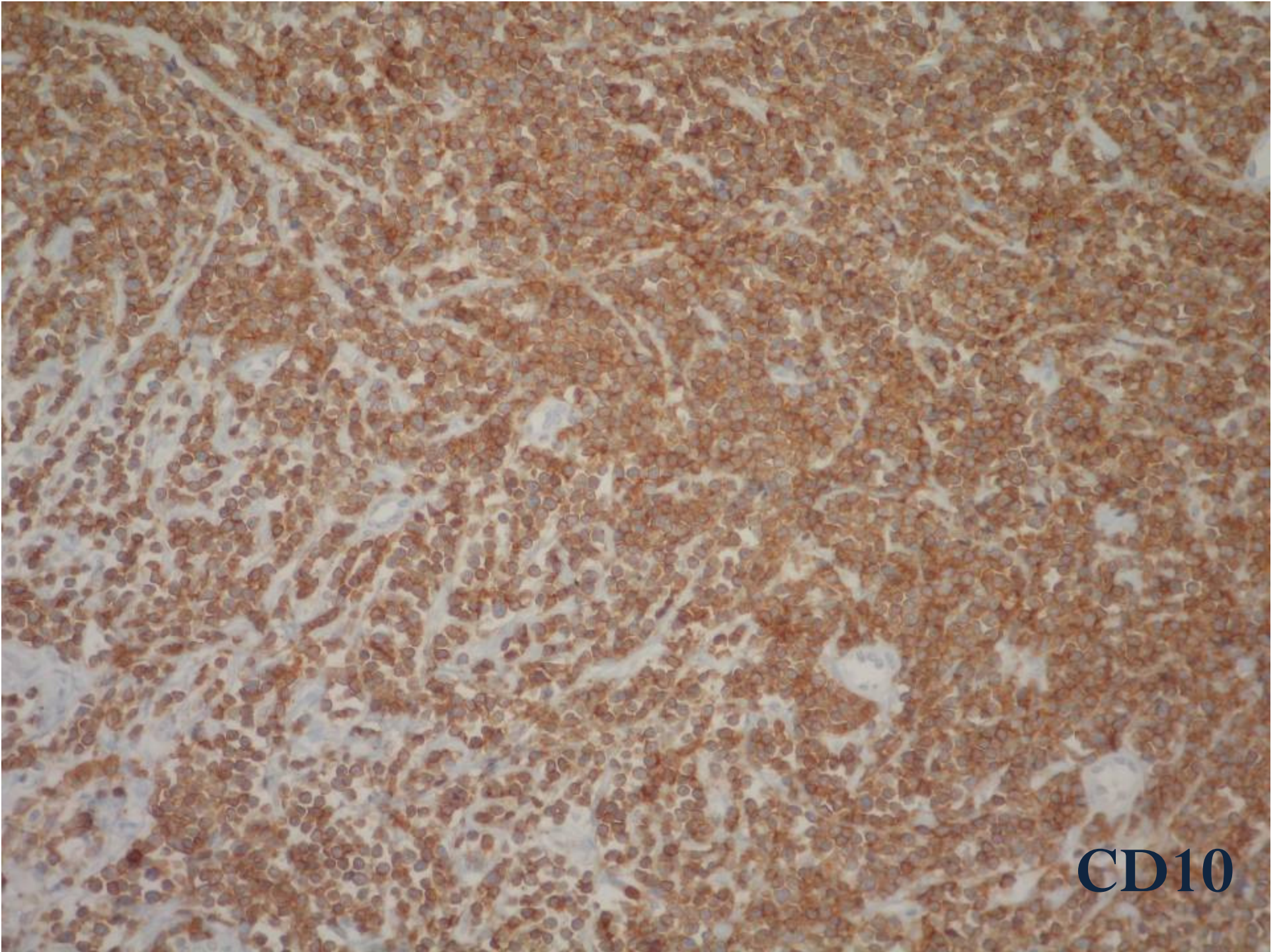
- **CD 5**
 - **Ciclina D1**
 - **CD 23**
 - **Kappa e lambda**
 - **Lisozima**
 - **Mieloperoxidase**
-



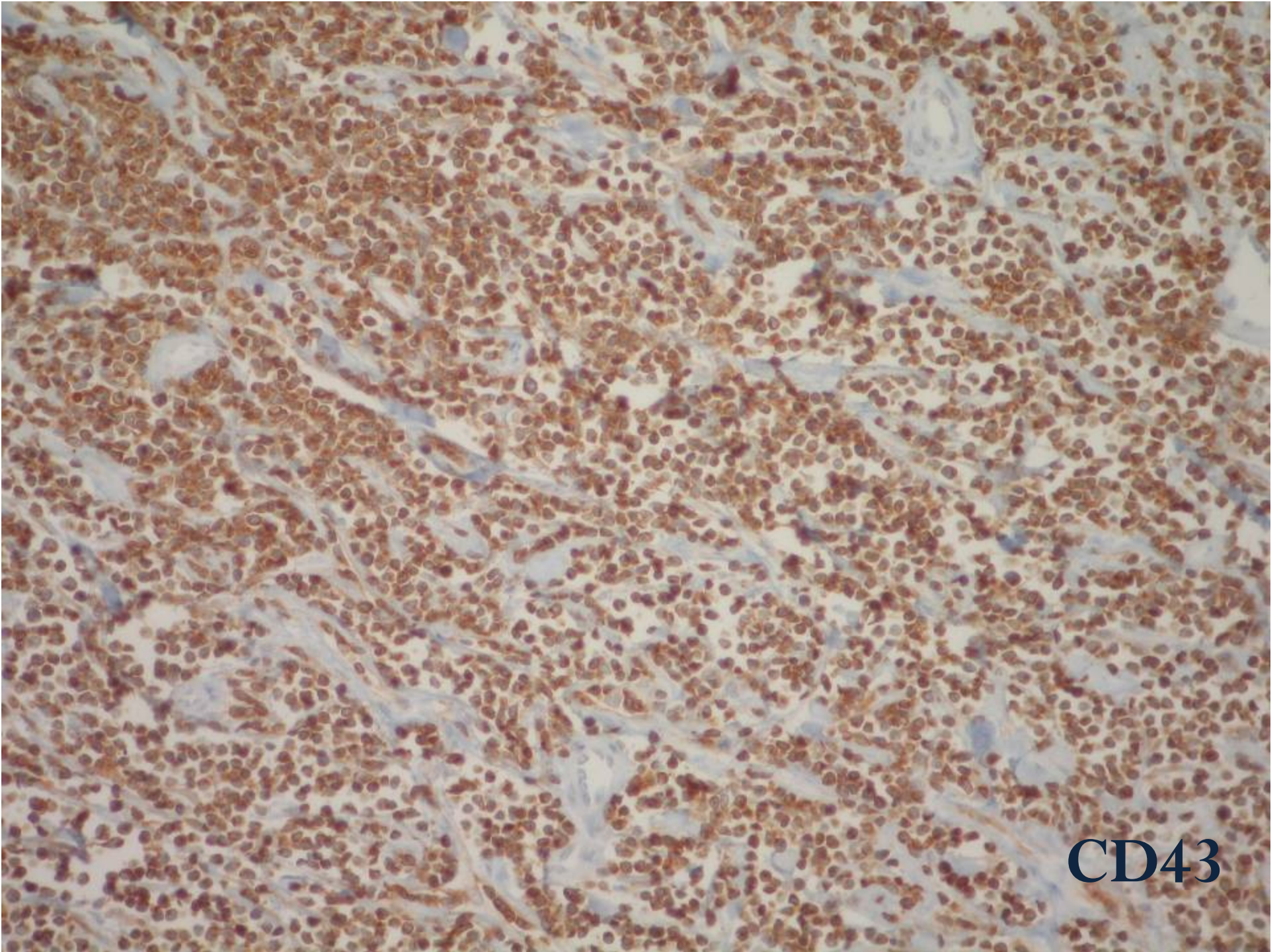
Ki 67/ MIB-1



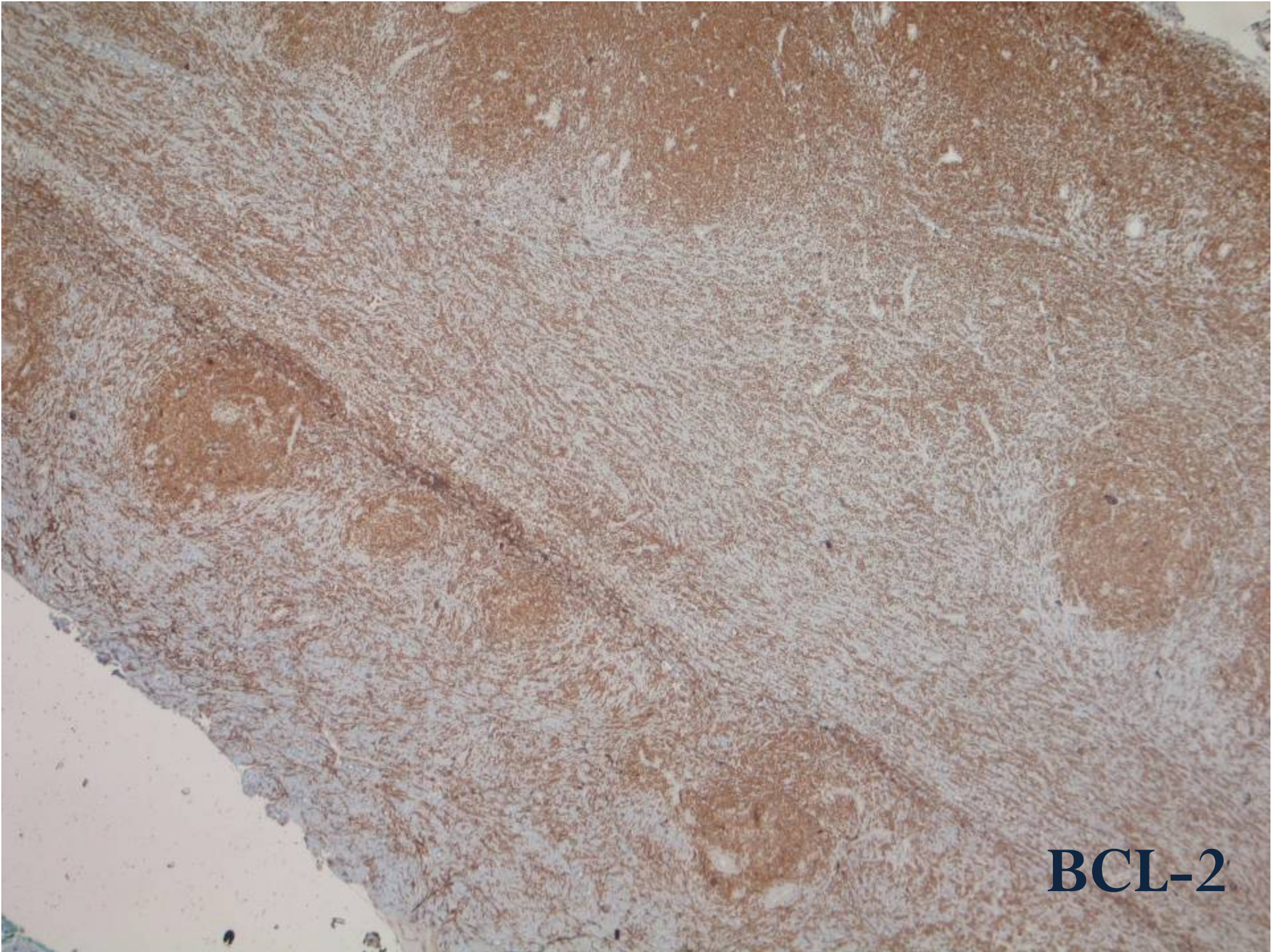
TdT



CD10



CD43



BCL-2

Em resumo

- **Marcadores positivos:**

CD20 (fraco)

CD43

TdT

BCL-2

CD10

Ki67 em cerca de 70% das células

- **Marcadores negativos:**

CD5

CD23

ciclina D1

Kappa e lambda

lisozima

mieloperoxidase

Qual é o diagnóstico mais provável?

**A SOCIEDADE BRASILEIRA
DE PATOLOGIA AGRADECE
SUA PARTICIPAÇÃO.**
