



**Divisão de Anatomia Patológica do Hospital das
Clínicas da FMUSP
DAP 09-3487**

Juliana Naves Ravanini

Dados clínicos

Masculino, 30 anos

Previamente hígido

Hematúria após traumas lombares

Emagrecimento de 5 Kg em 15 dias

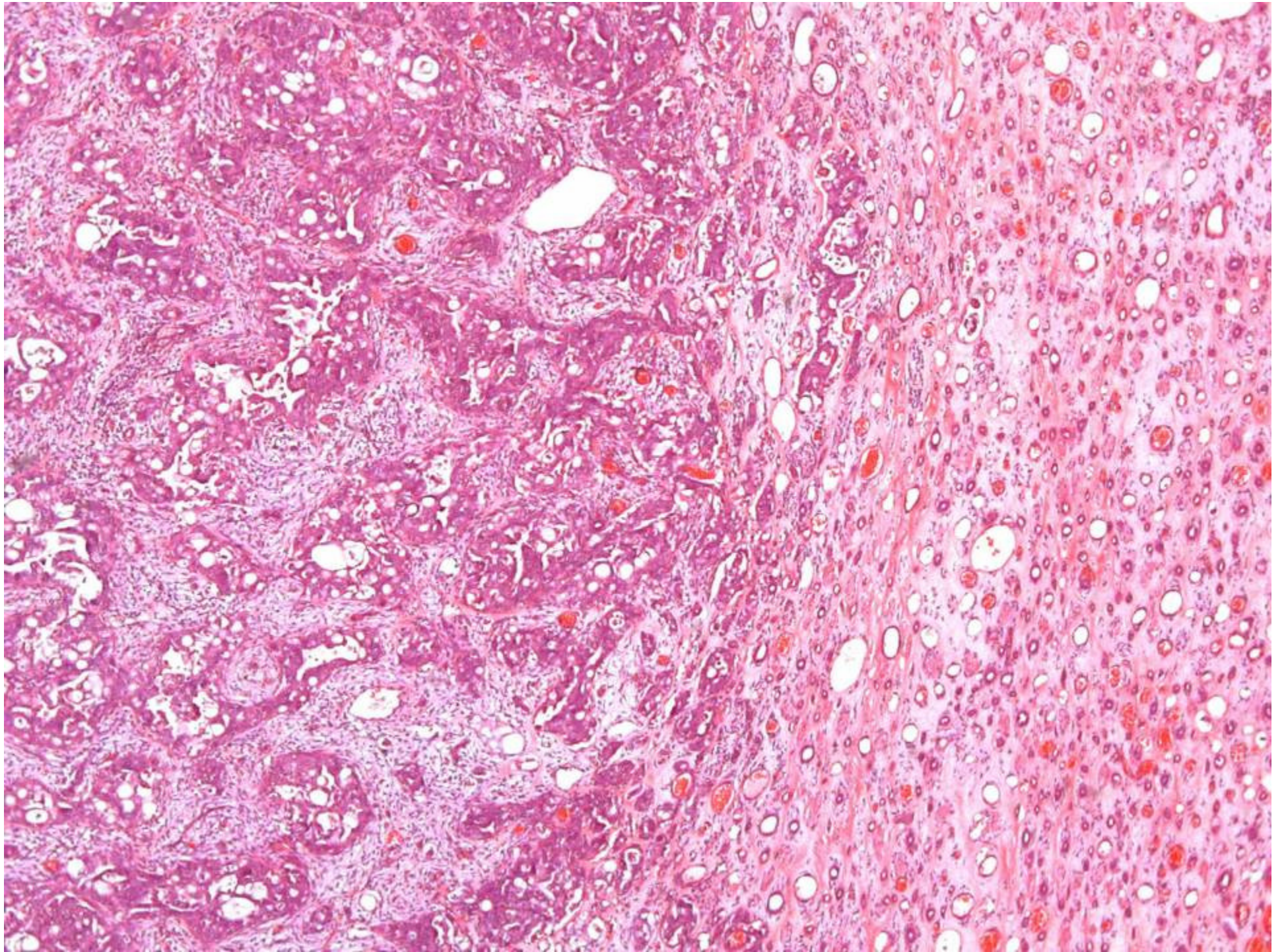


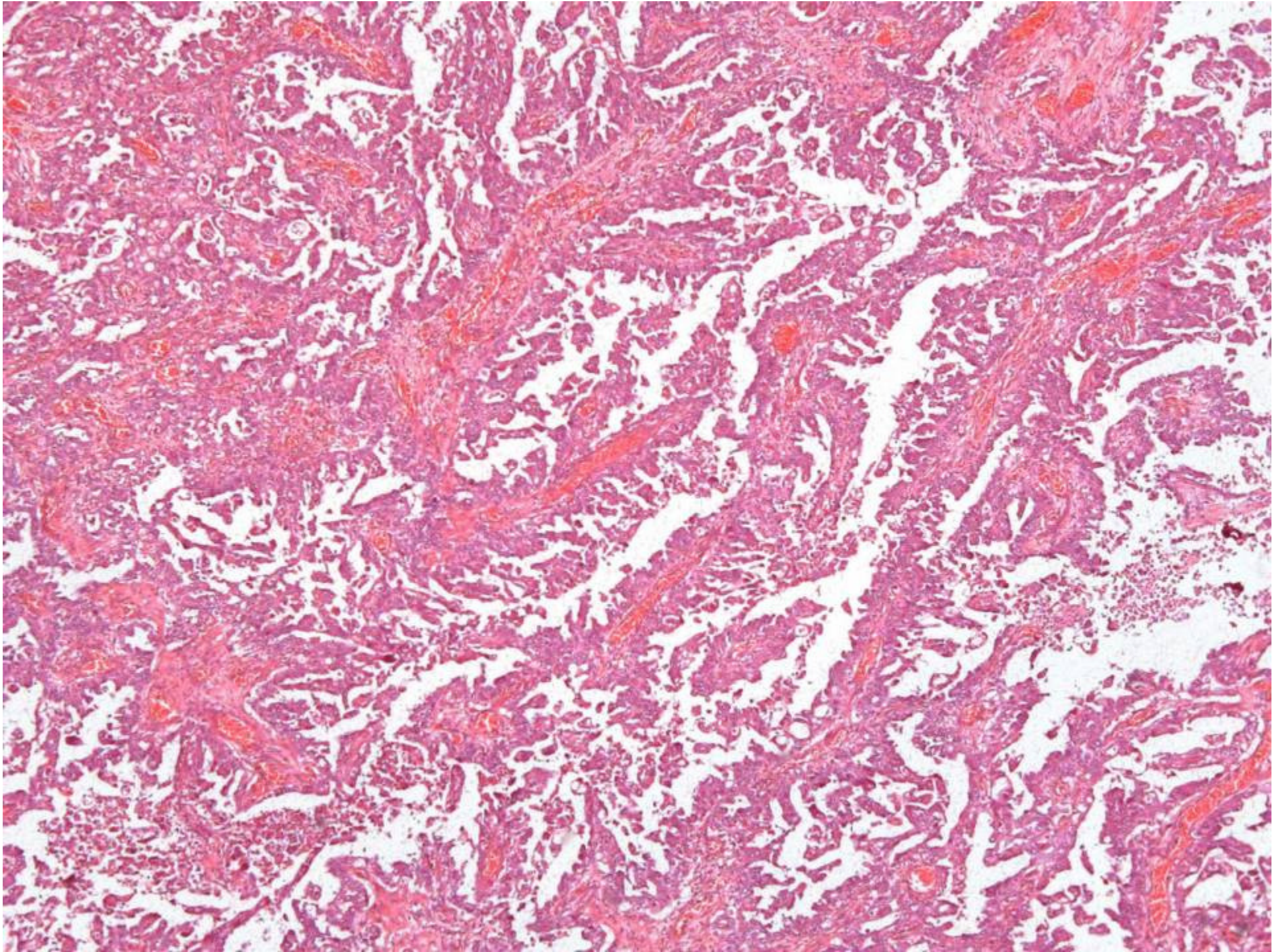
Macrosocopia

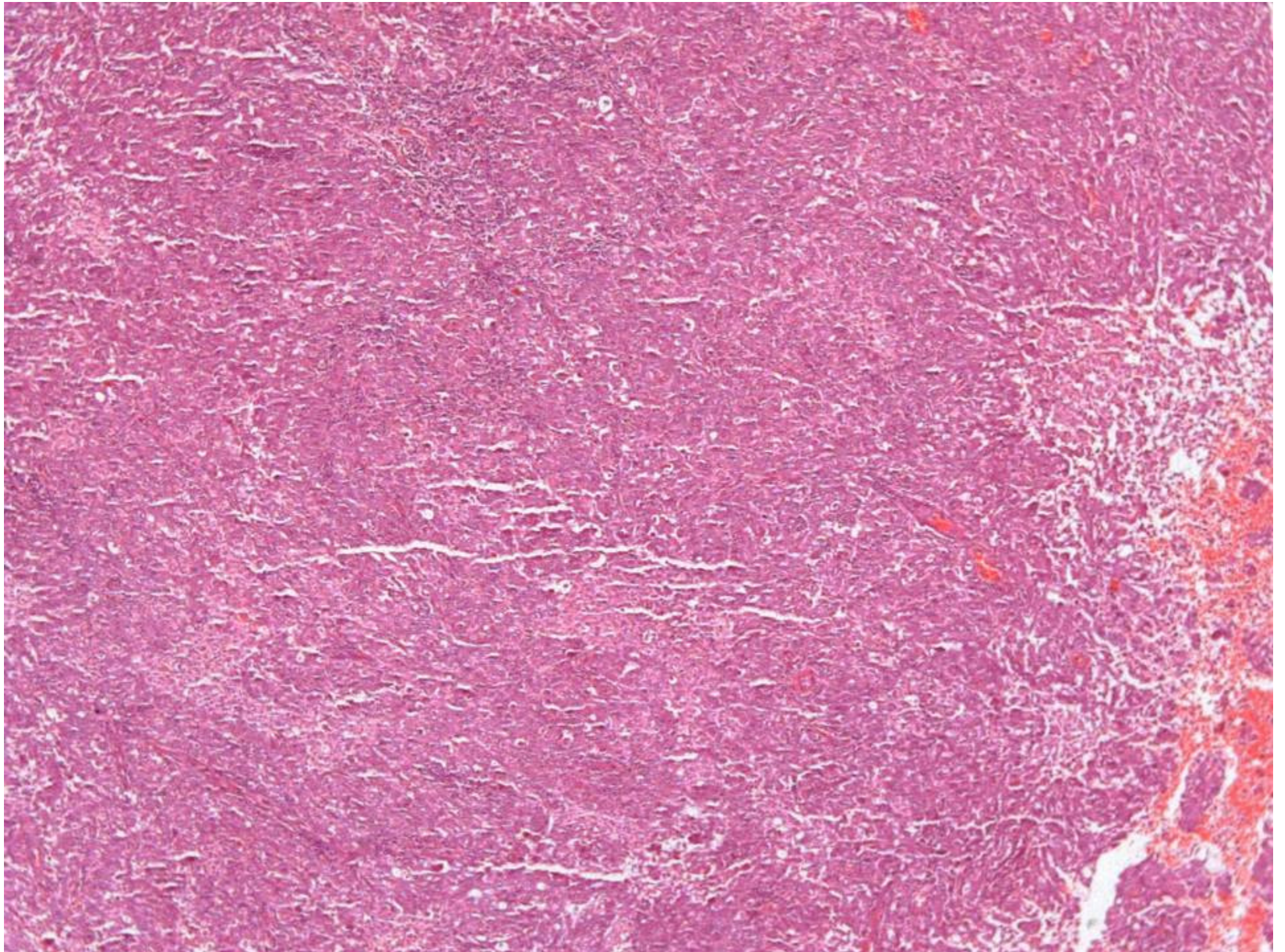


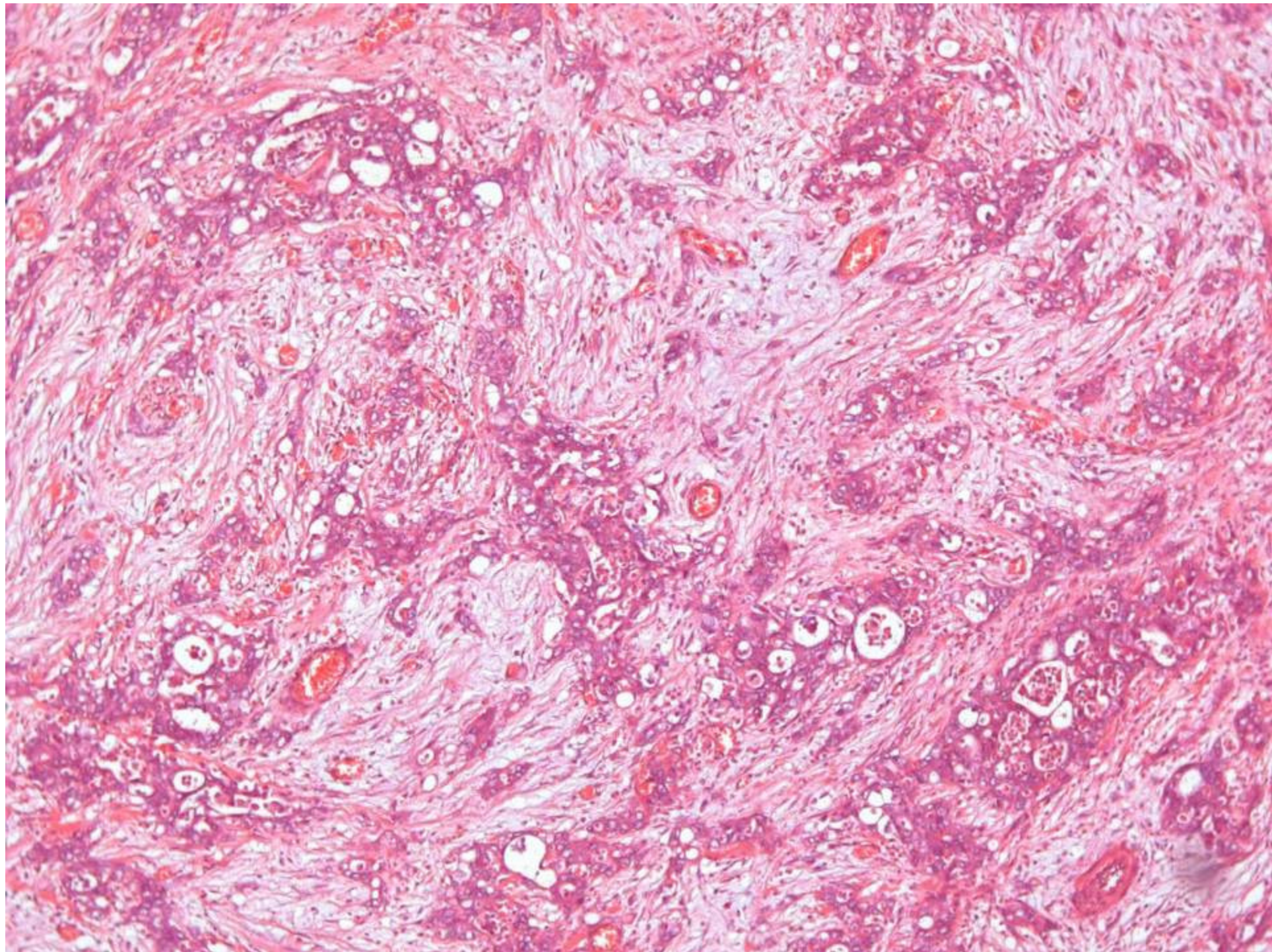
Macrosocopia

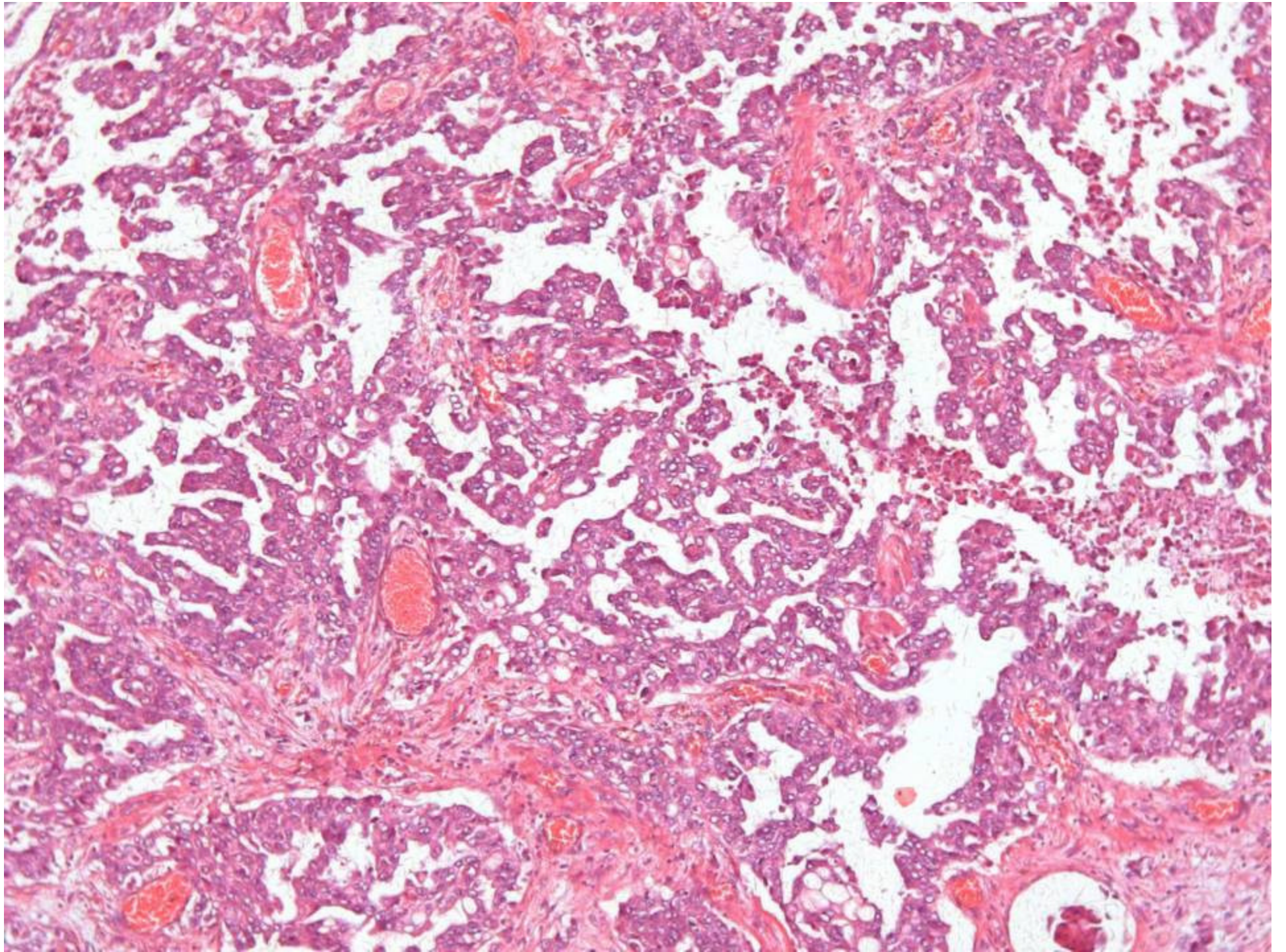


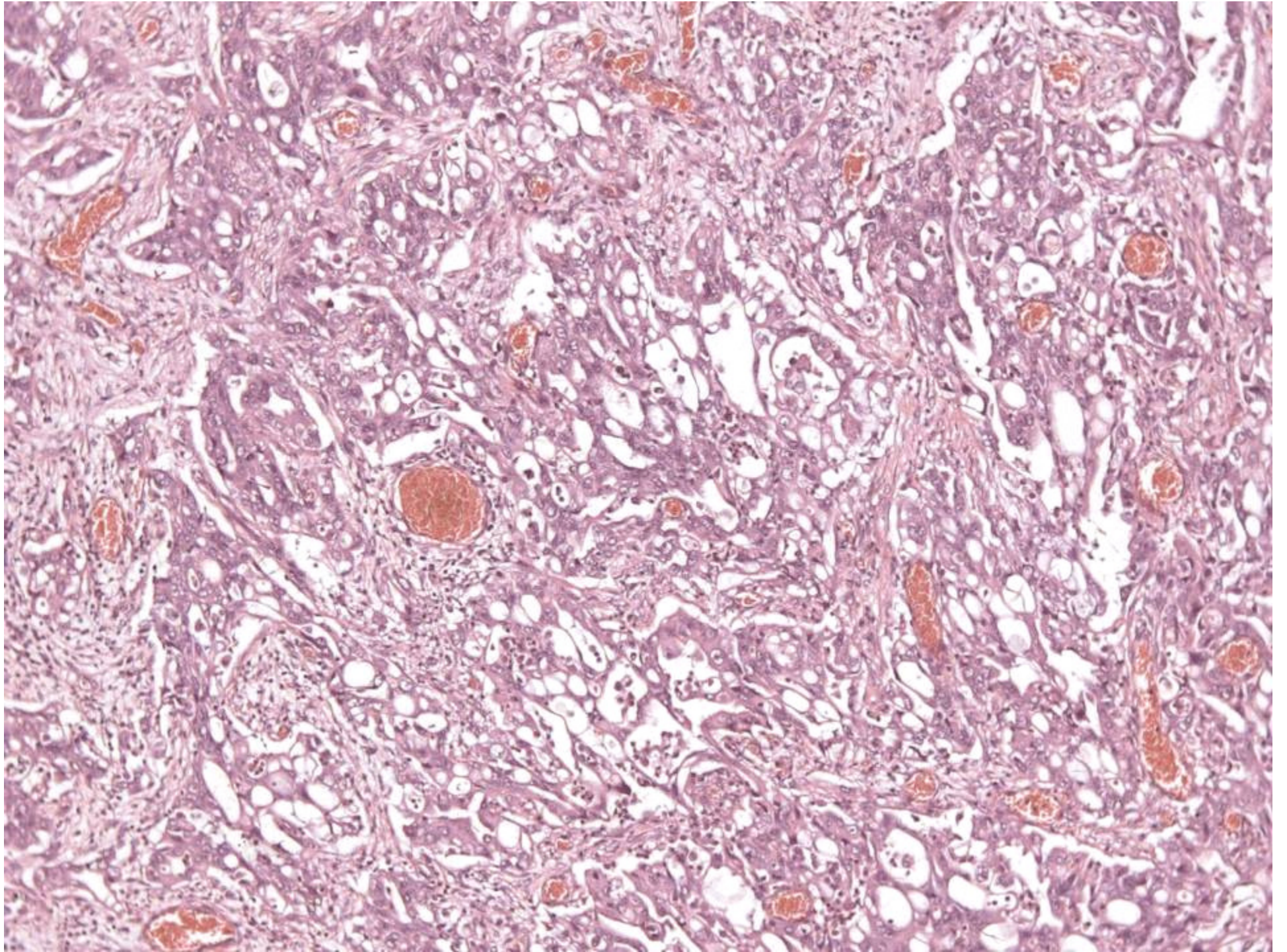


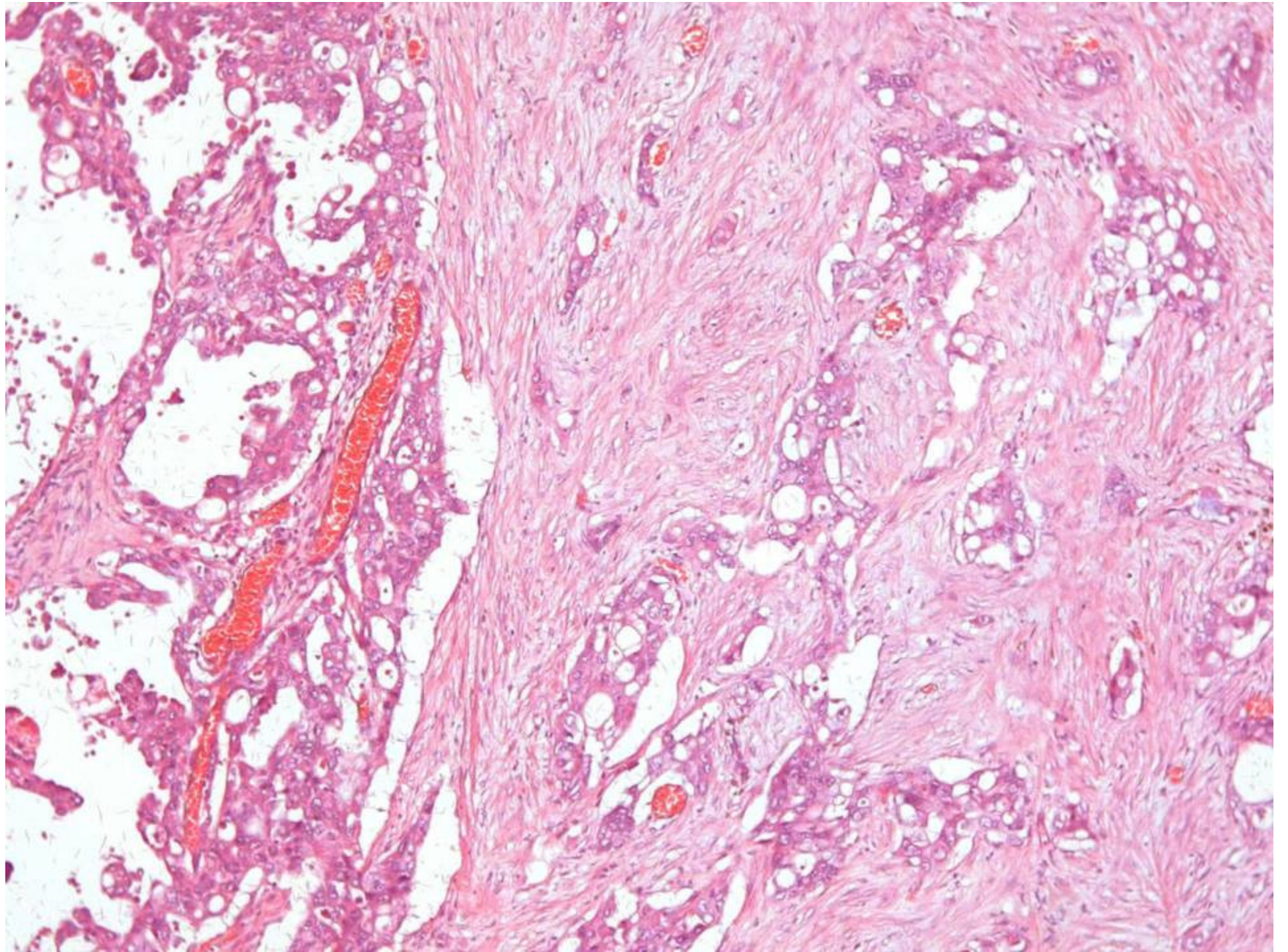


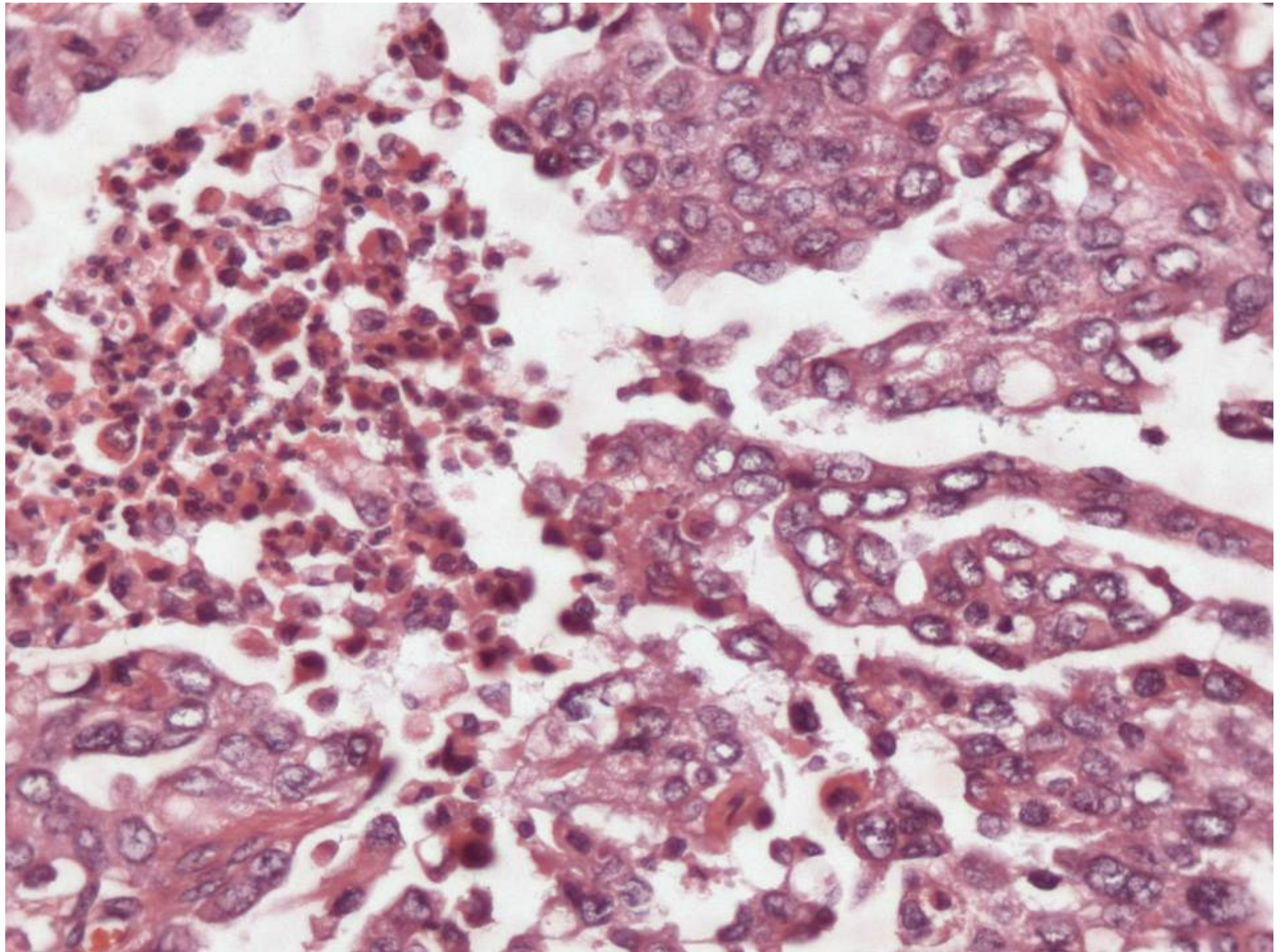


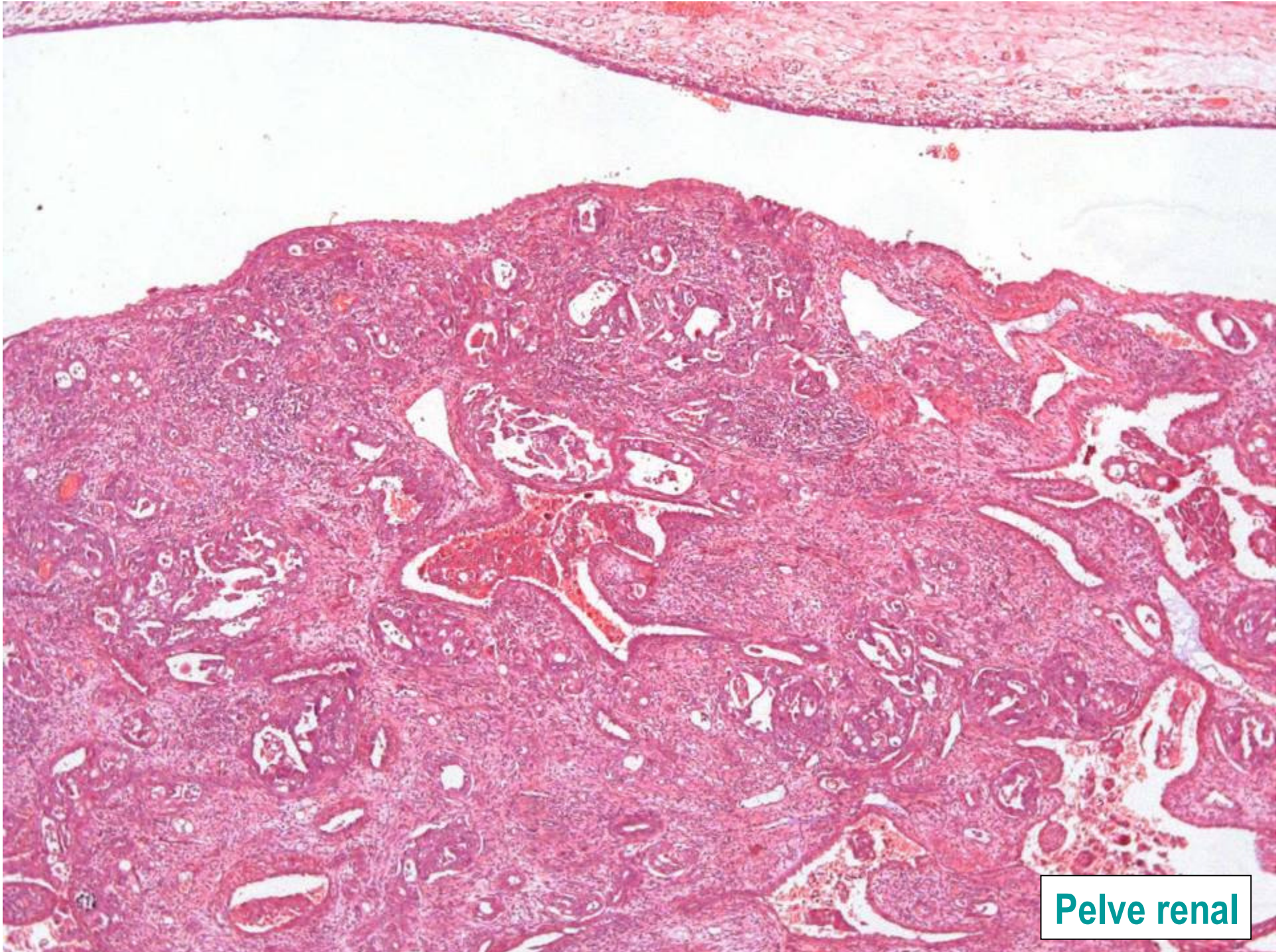




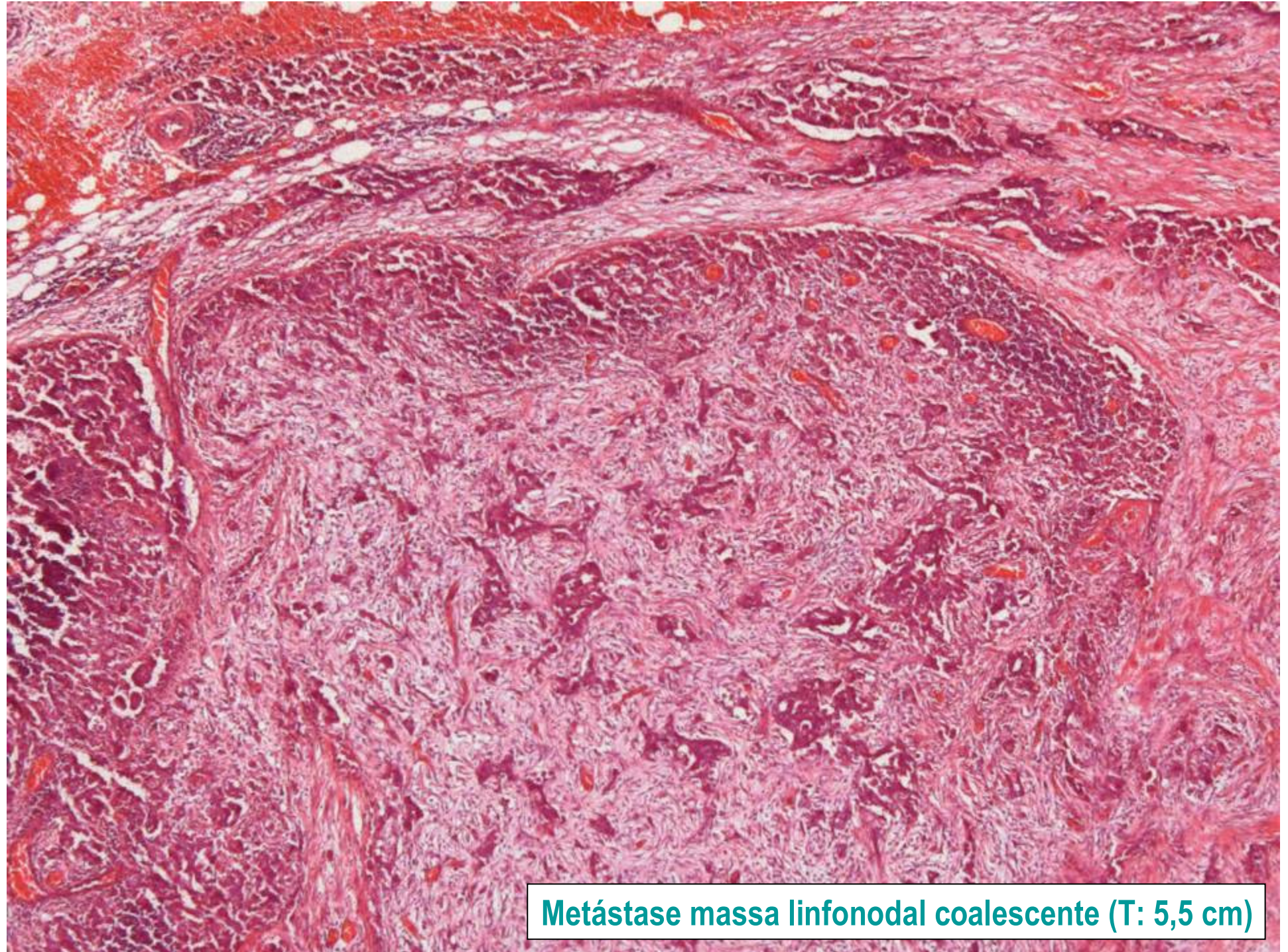






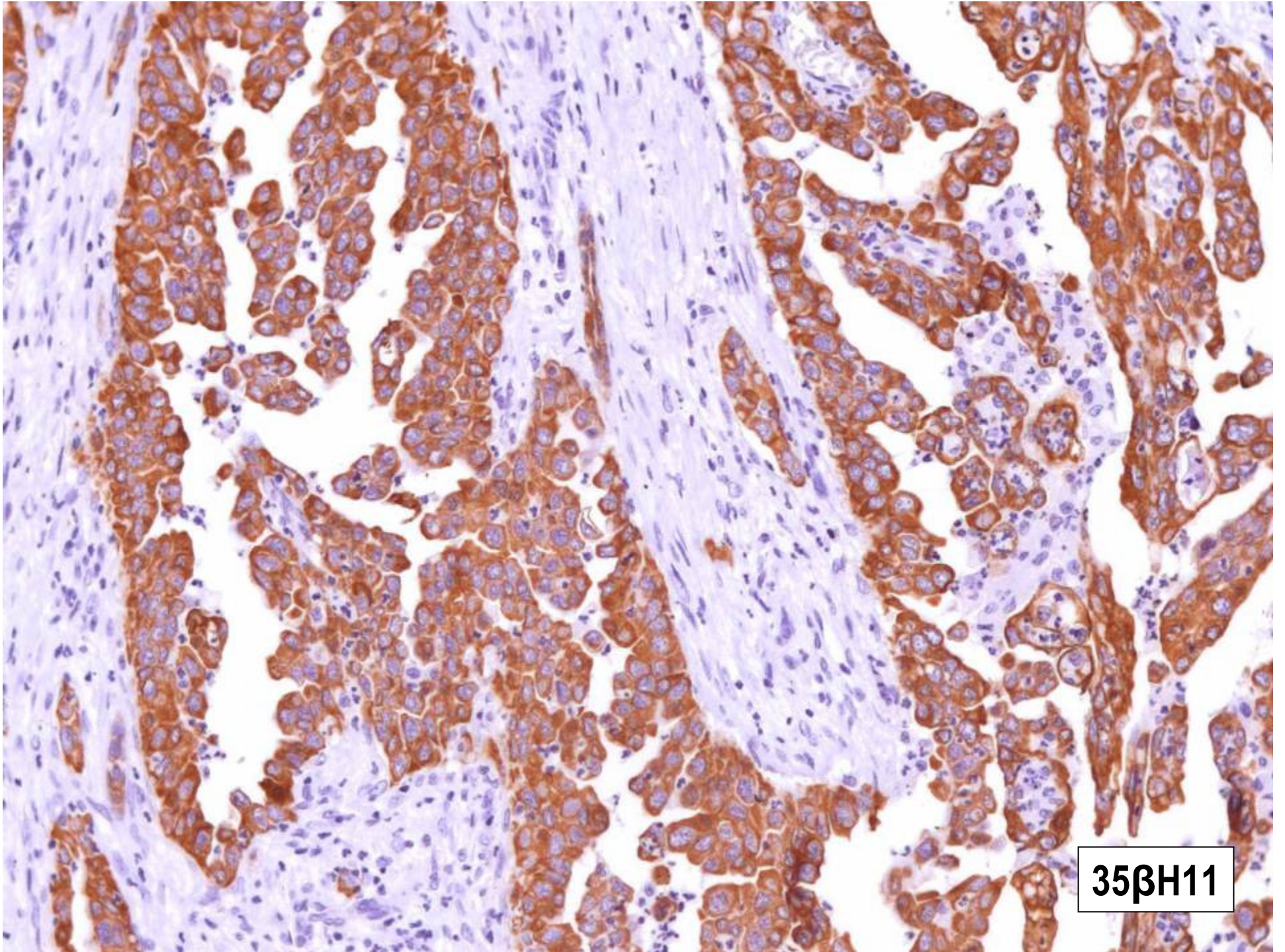


Pelve renal

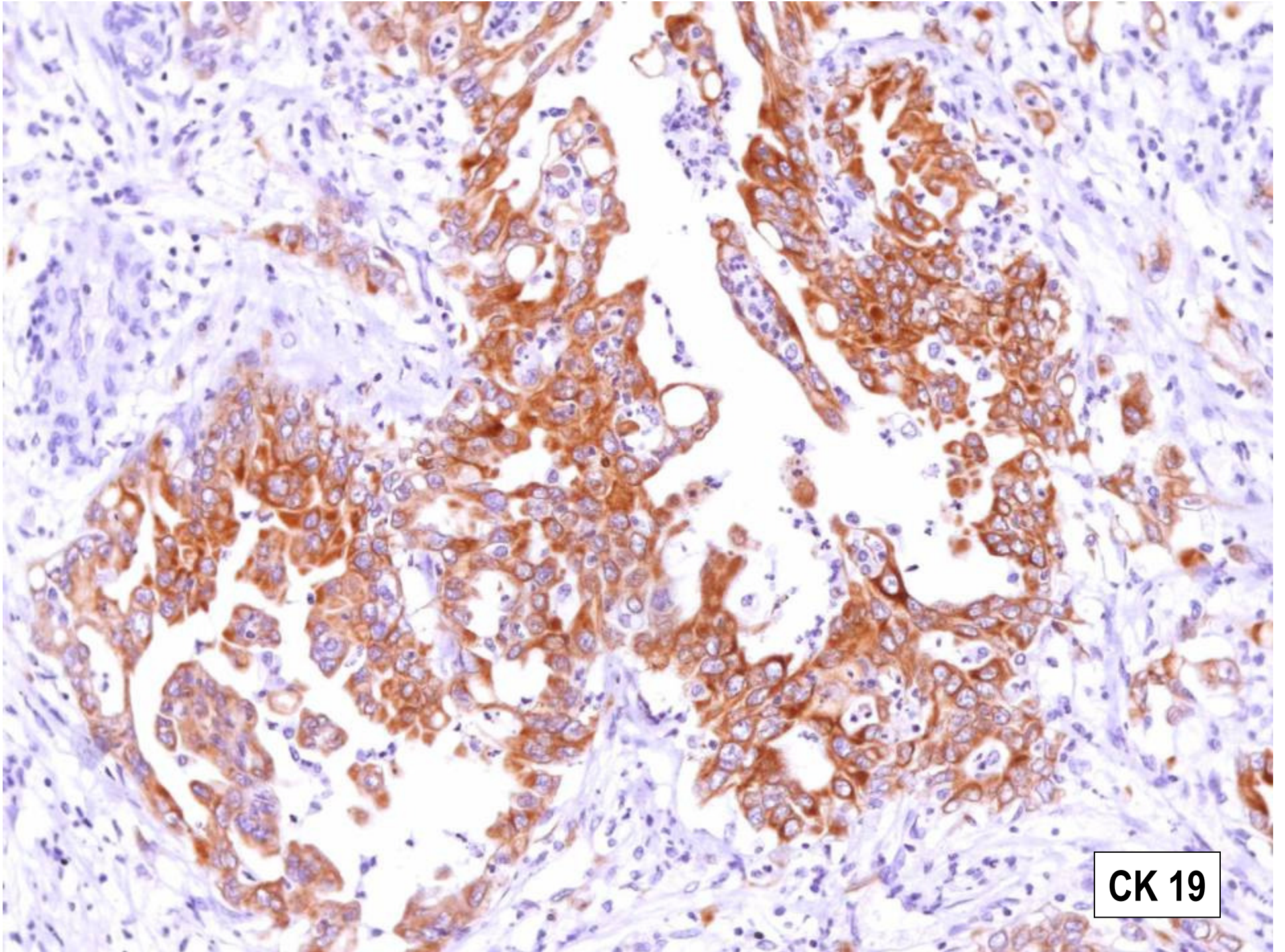


Metástase massa linfonodal coalescente (T: 5,5 cm)

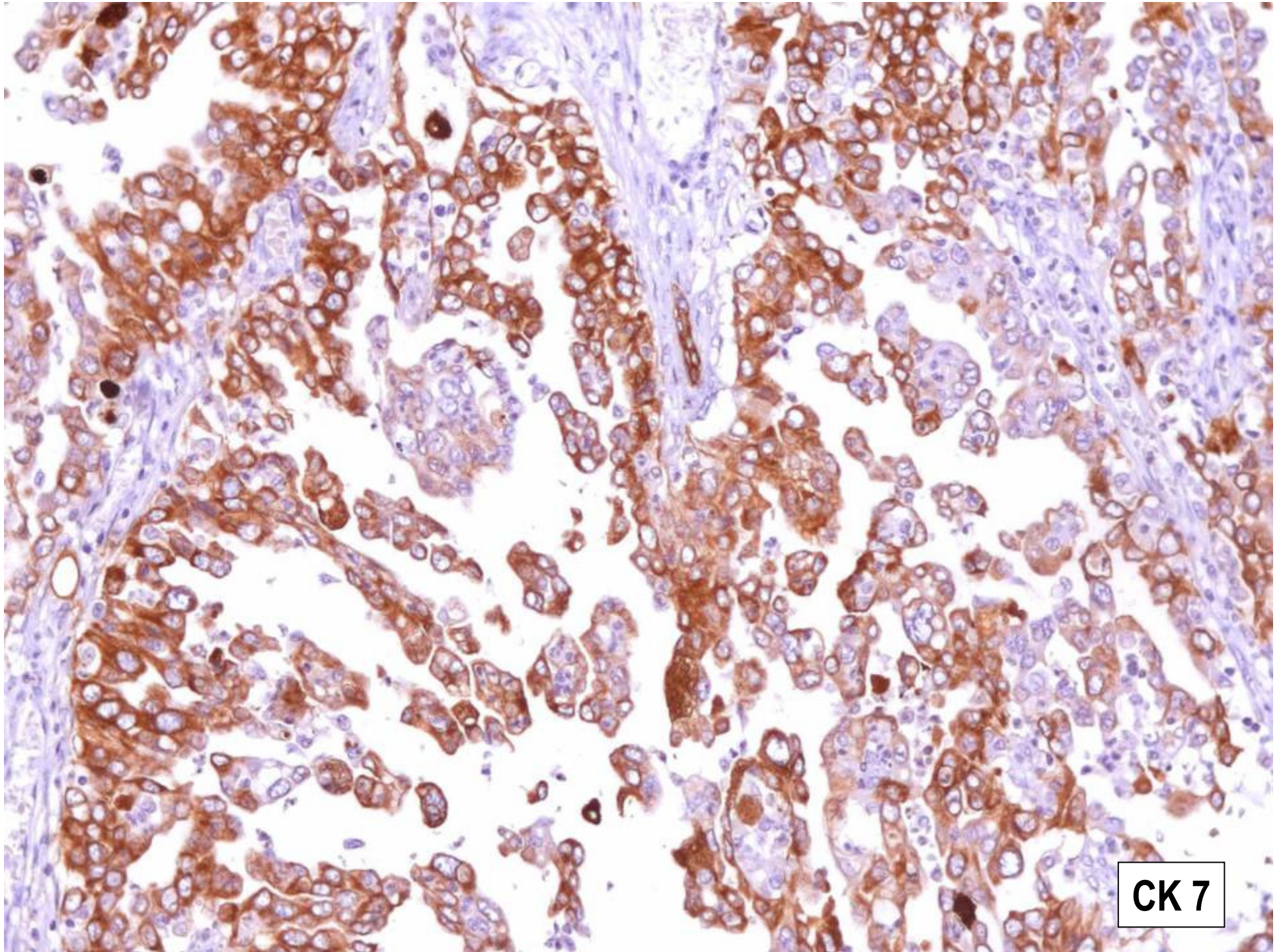
Imuno-histoquímica



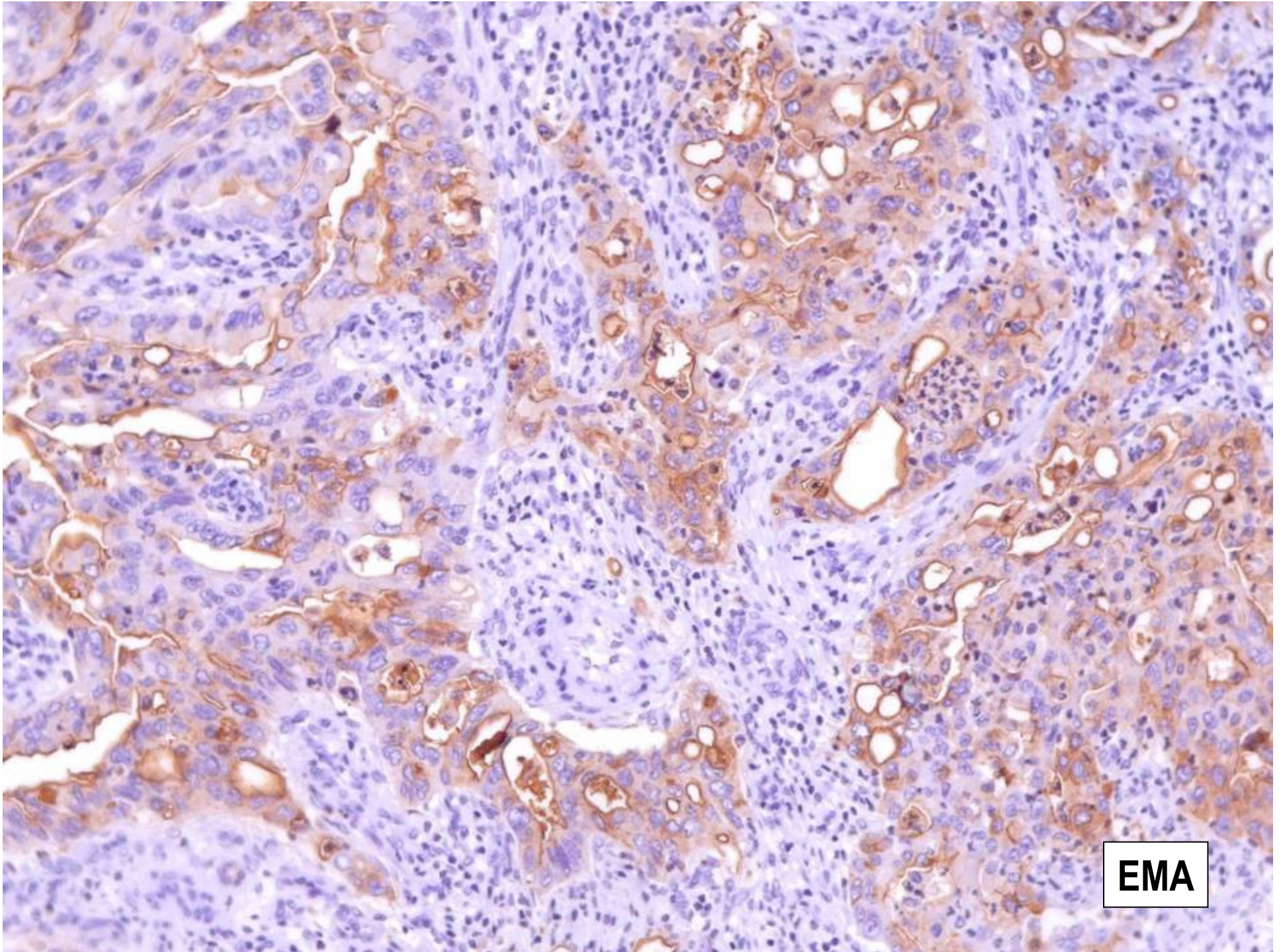
35βH11



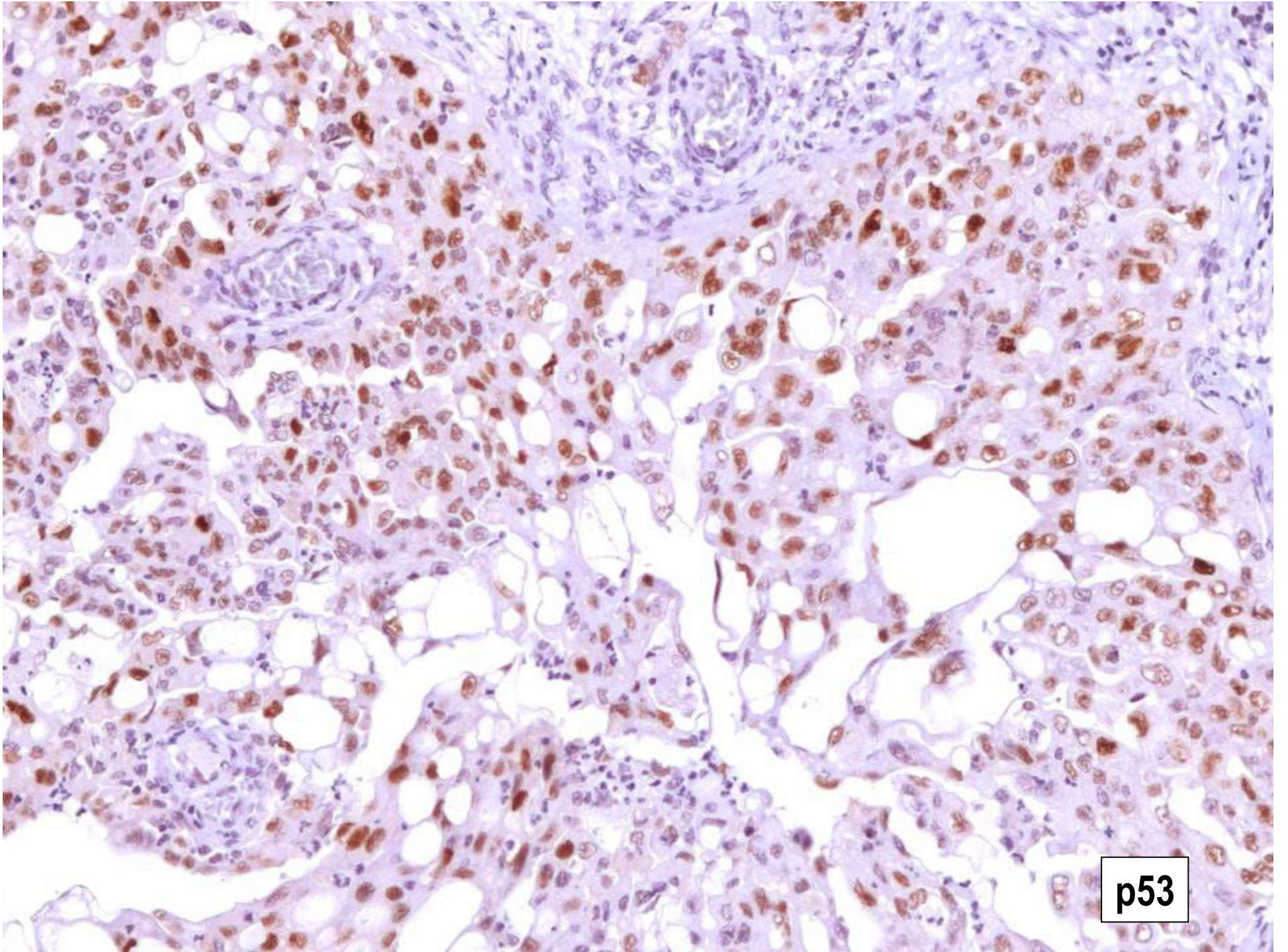
CK 19



CK 7



EMA



p53

Painel imuno-histoquímico

| Antígeno | Resultado |
|-------------------|-----------|
| 35 β H11 | positivo |
| Citoqueratina 19 | positivo |
| Citoqueratina 7 | positivo |
| EMA | positivo |
| p53 | positivo |
| CEA | negativo |
| 34 β H12 | negativo |
| Citoqueratina 20 | negativo |
| Citoqueratina 5/6 | negativo |
| Vimentina | negativo |

Qual é o
diagnóstico?





Obrigado por participar.