



Mariangela Marques
Depto Patologia
FM Botucatu - UNESP

HISTORIA CLINICA

- Sexo feminino, 68 anos com lesão pigmentada plantar há um ano, plana, medindo cerca de 1cm. Crescimento lento.



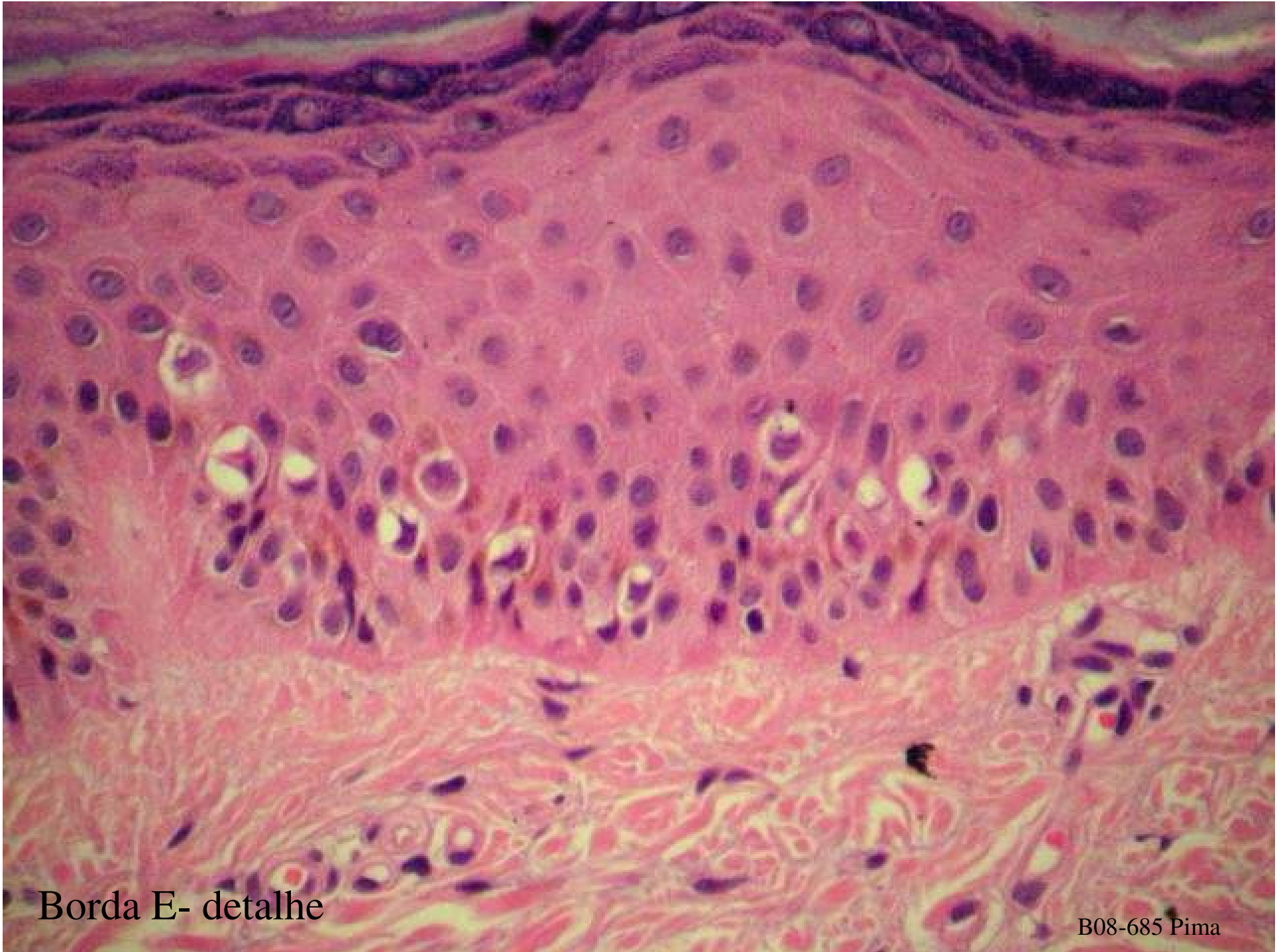


Centro da lesão
Assimetria dos contornos
Hiperqueratose adicional ??

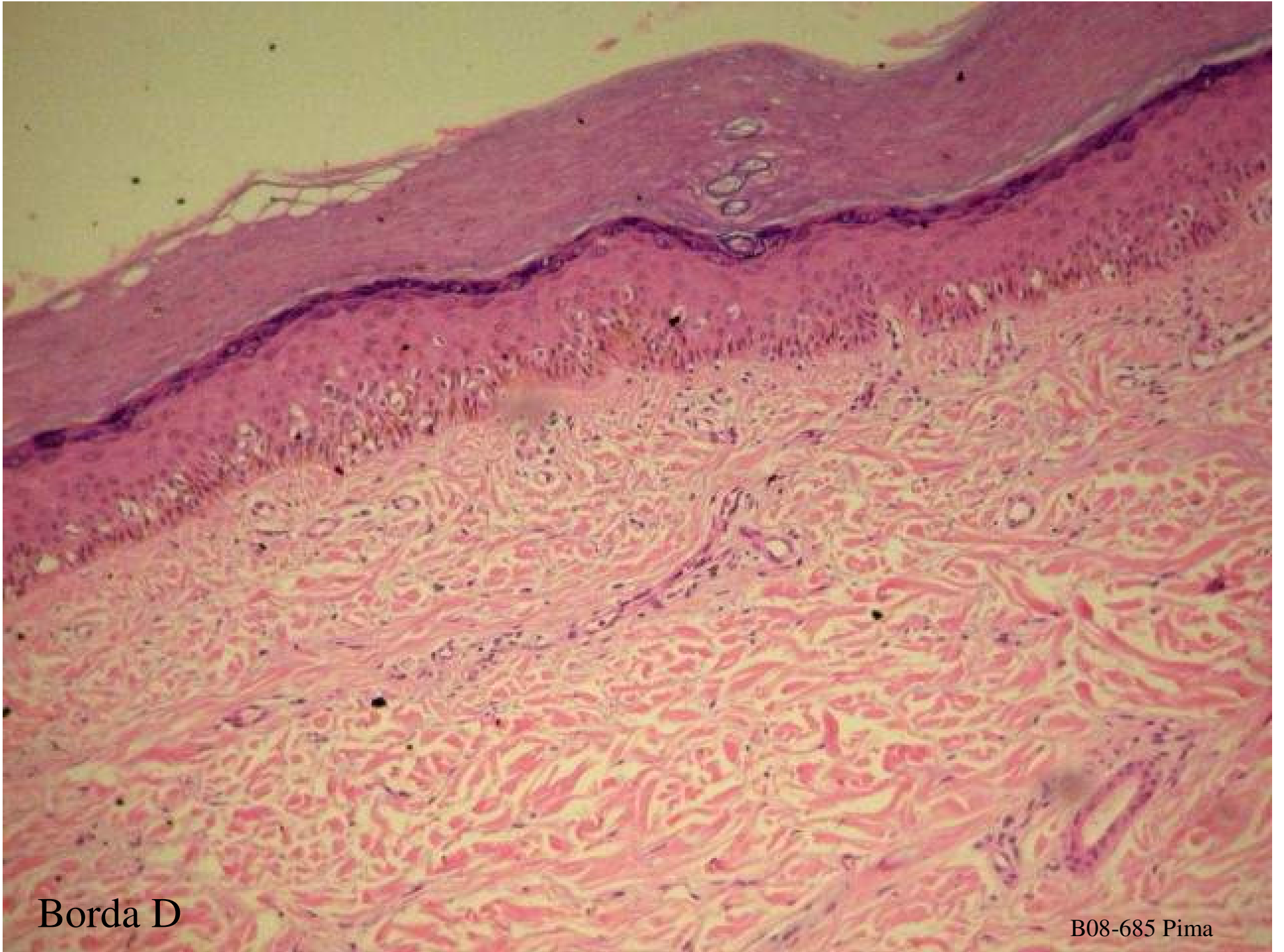


Borda E

B08-685 Pima

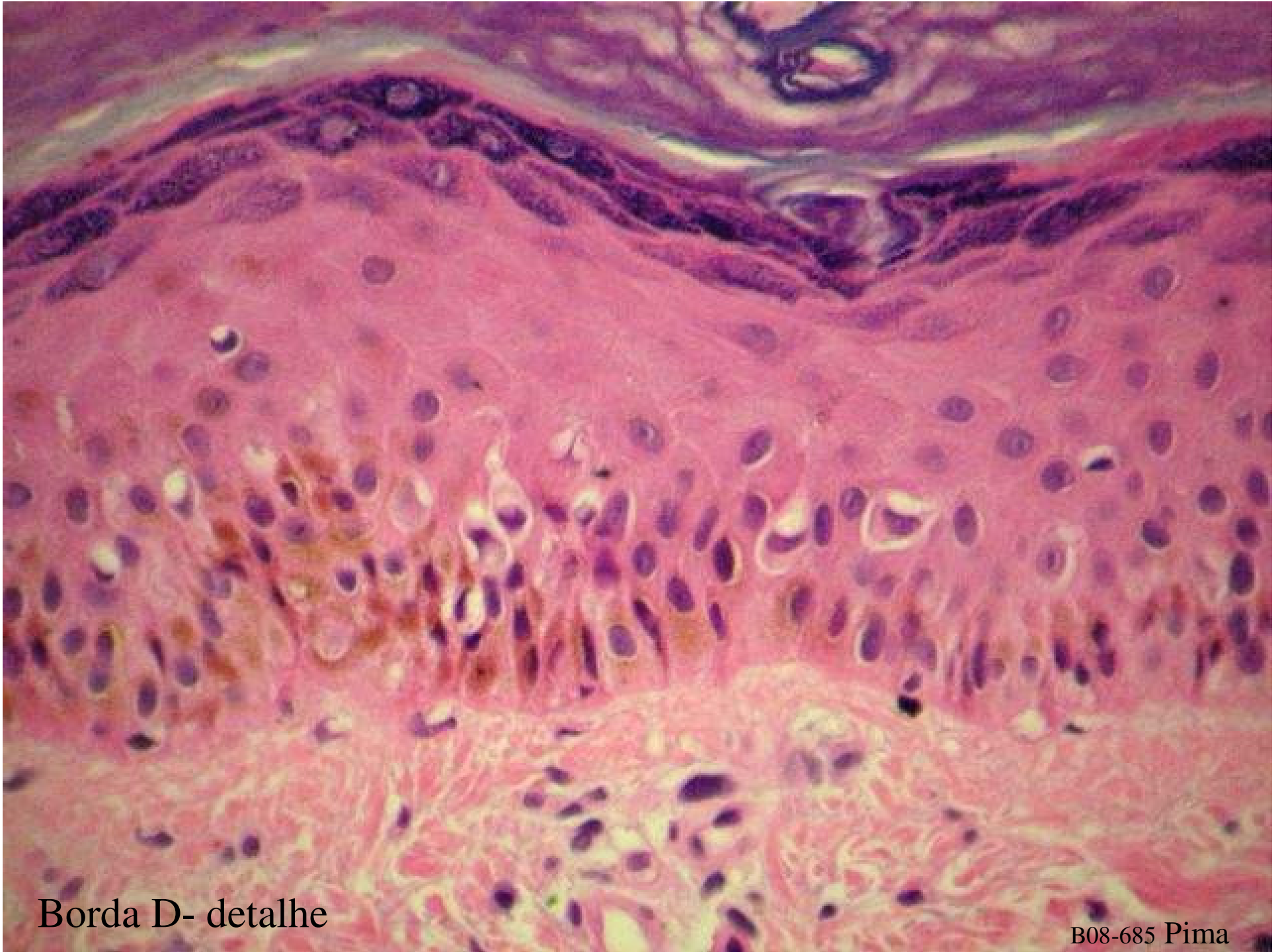


Borda E- detalhe

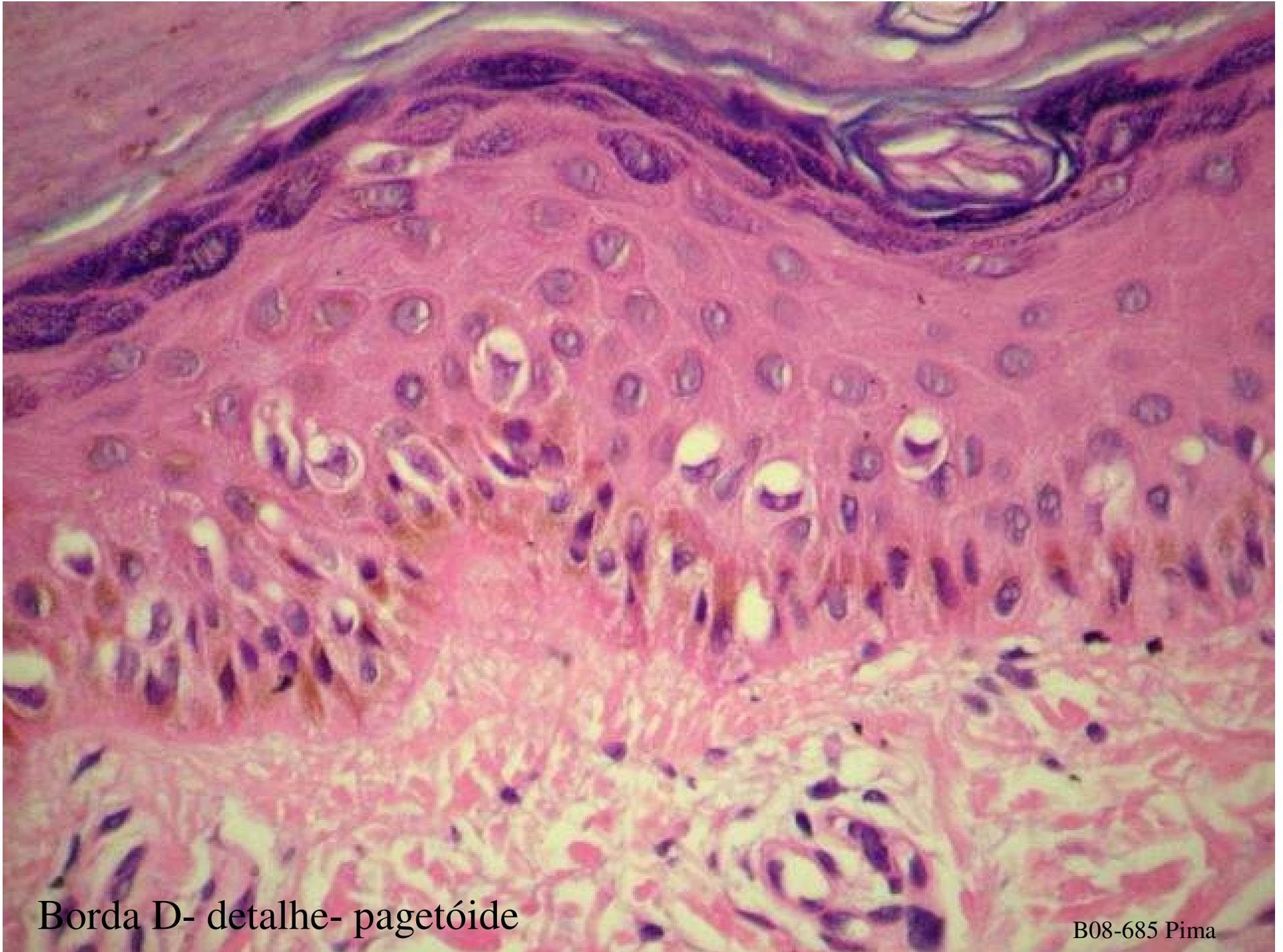


Borda D

B08-685 Pima



Borda D- detalhe



Borda D- detalhe- pagetóide

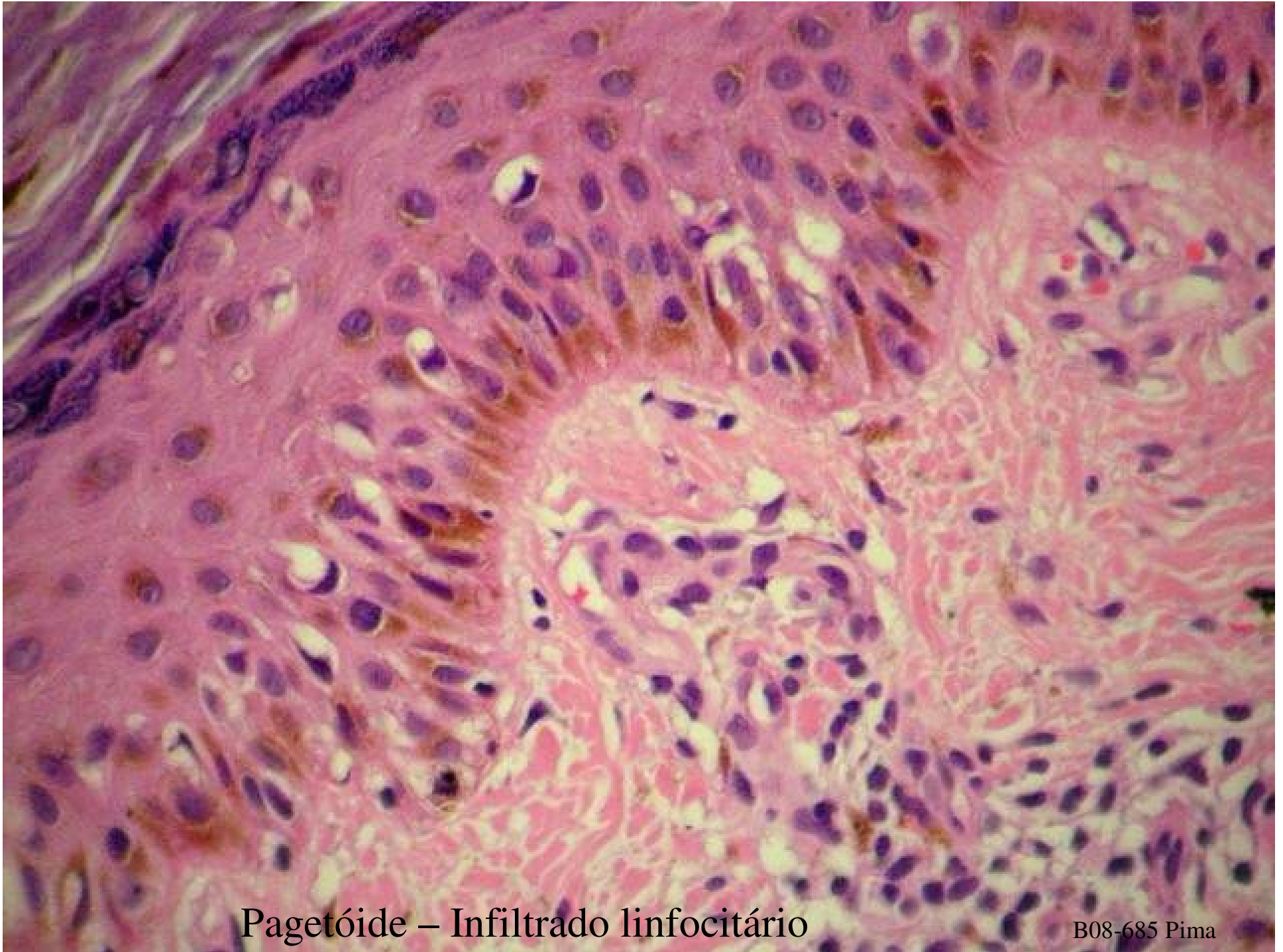
B08-685 Pima



Infiltrado linfocitário assimétrico

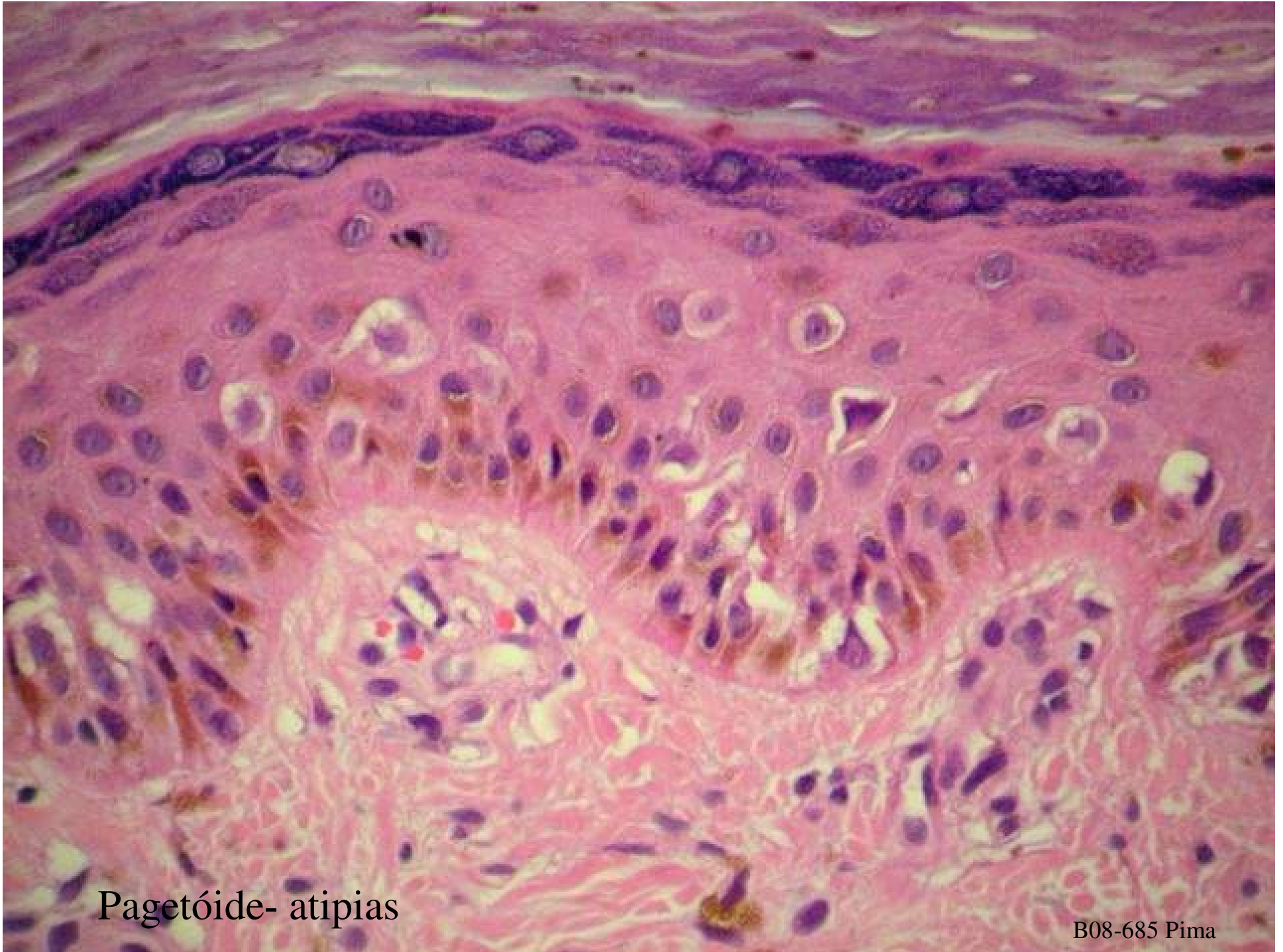


Infiltrado linfocitário assimétrico

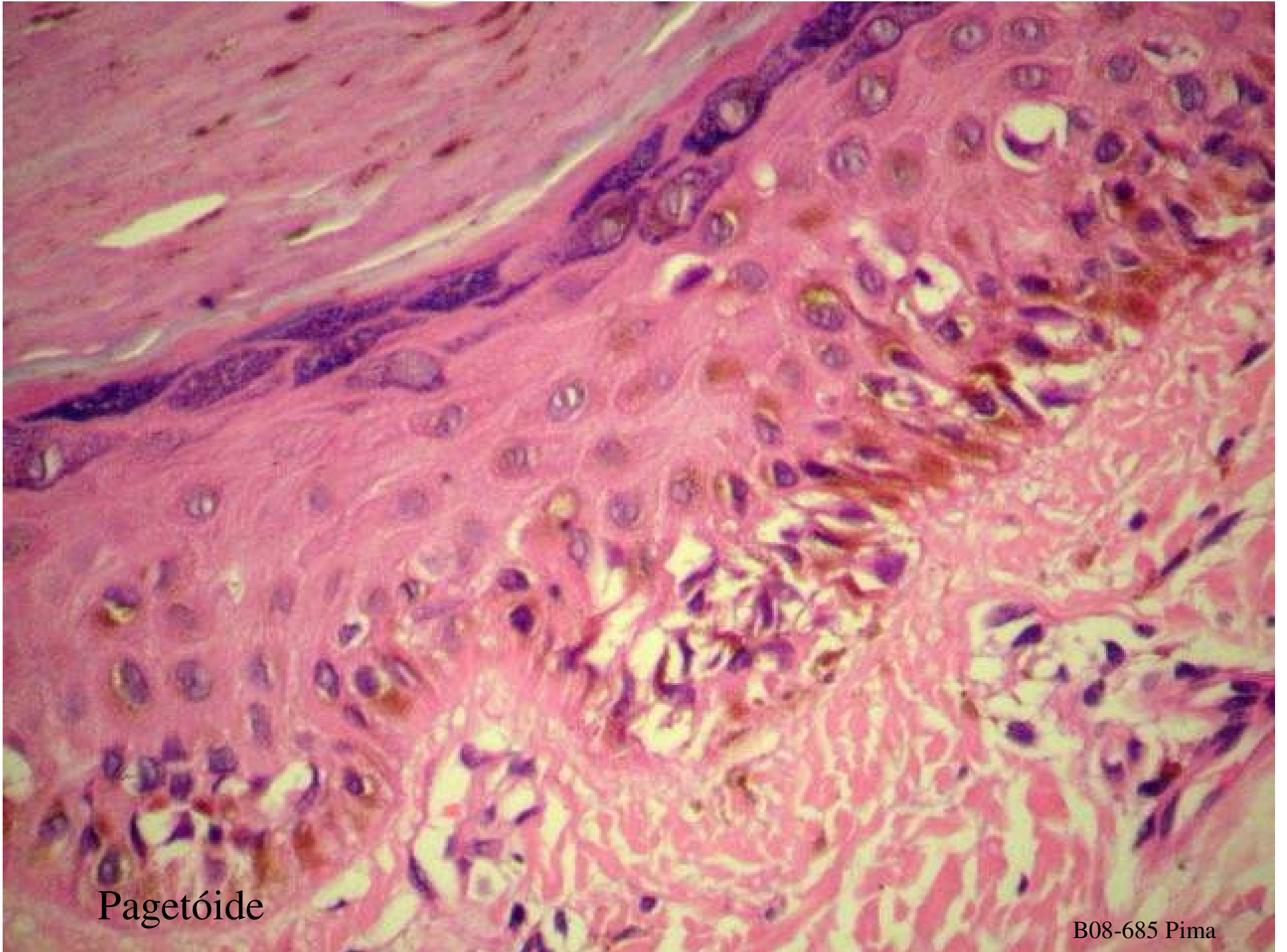


Pagetóide – Infiltrado linfocitário

B08-685 Pima



Pagetóide- atipias



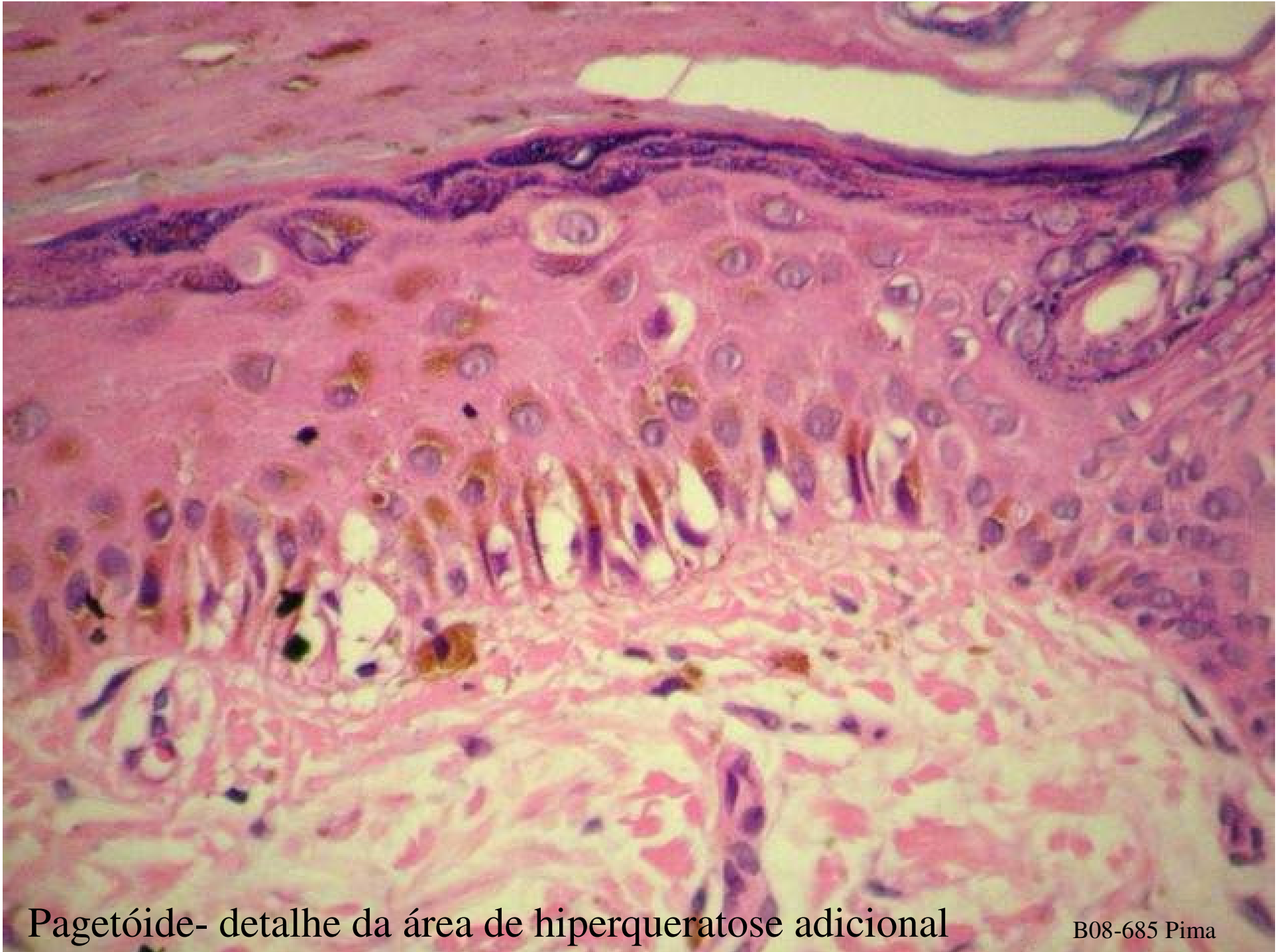
Pagetóide

B08-685 Pima



Hiperqueratose adicional??

B08-685 Pima

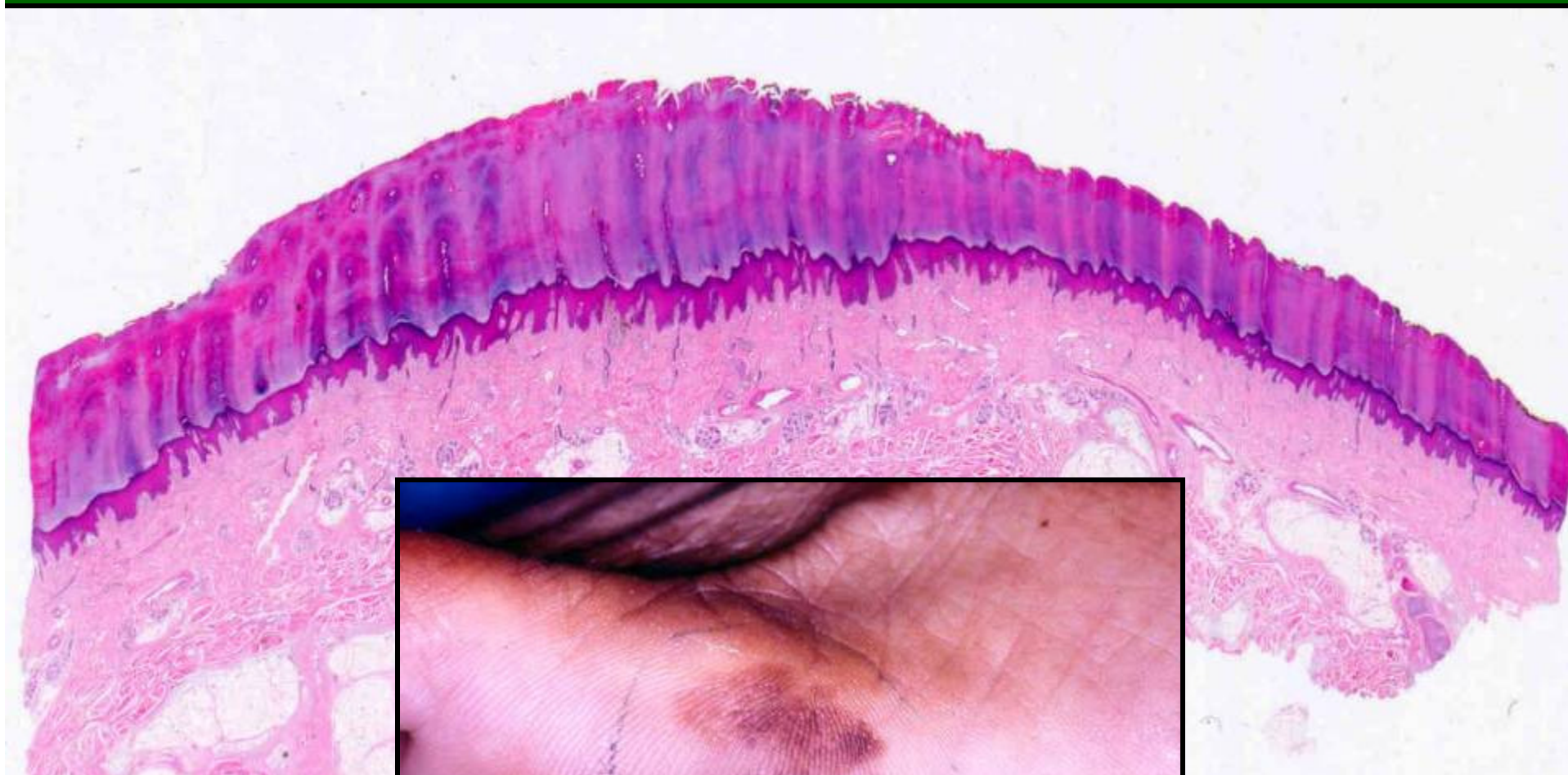


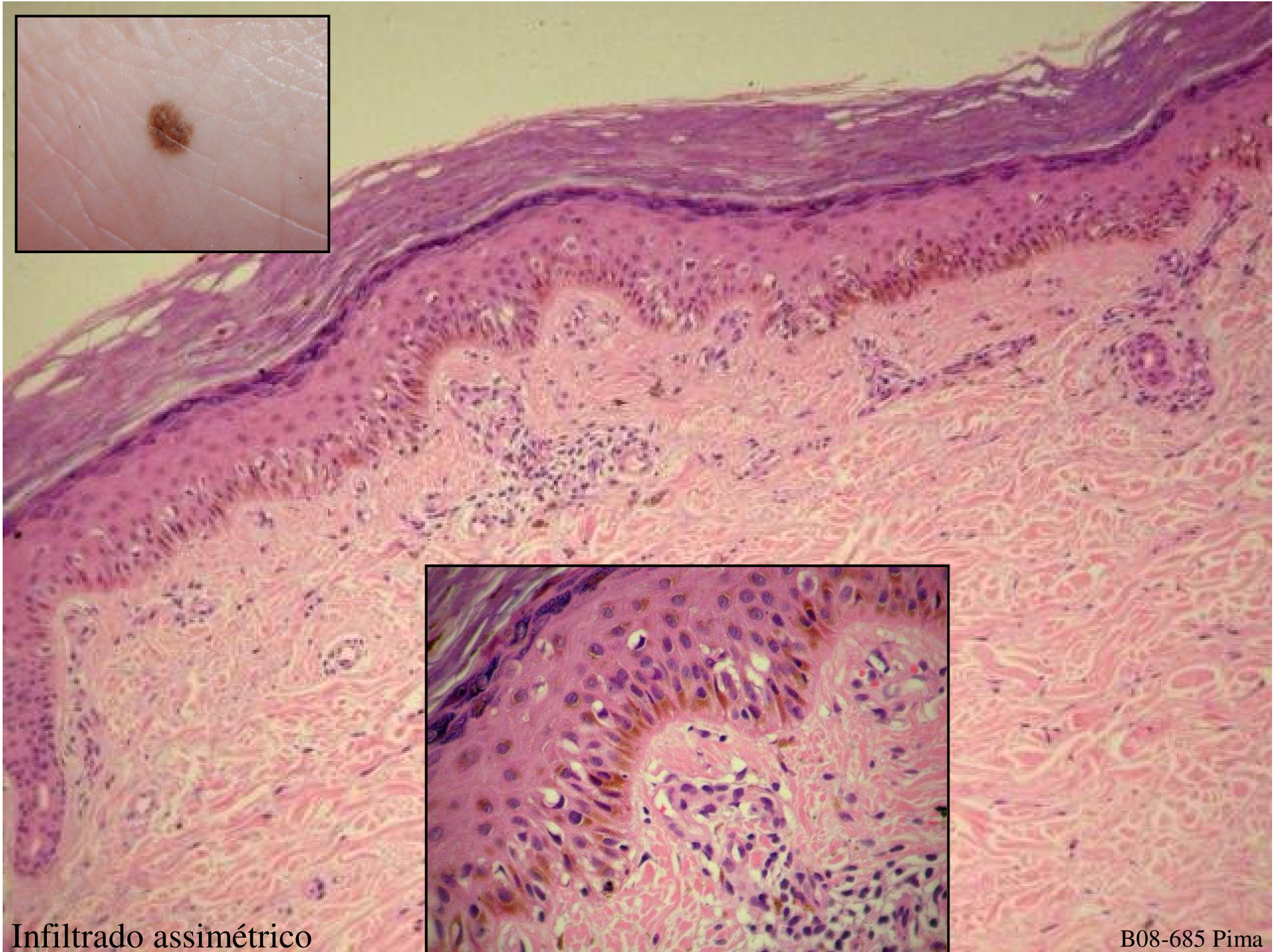
Pagetóide- detalhe da área de hiperqueratose adicional

B08-685 Pima

**Melanoma Acral
Lentiginoso
“in situ” Nivel I de Clark**

Dimensões





Infiltrado assimétrico

B08-685 Pima

Orientações clínicas para detecção precoce de melanoma plantar

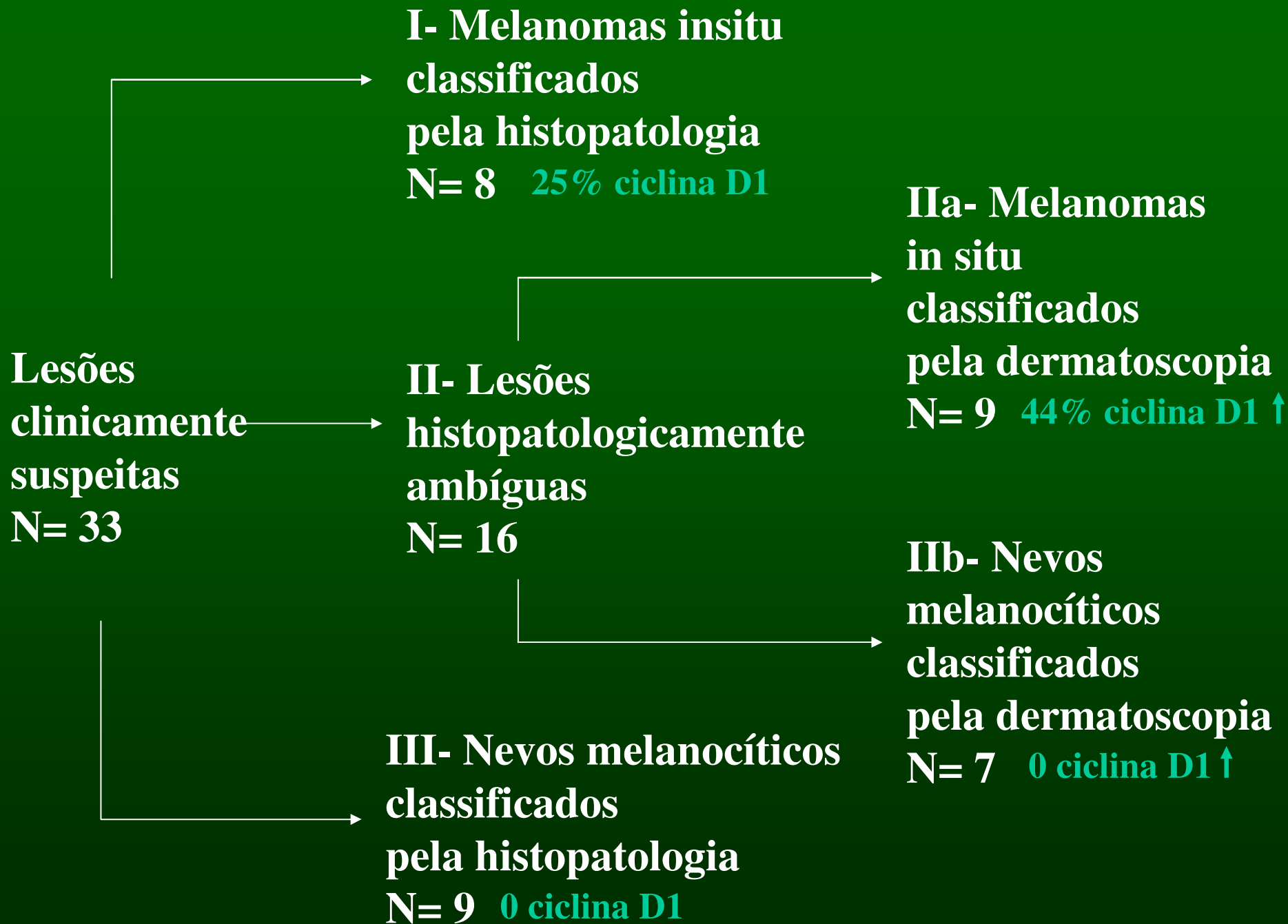
- Afastar nevo congênito
- **Estudo histológico dos casos:**
- Diâmetro entre 6 e 7mm ... ABCD, idade > 50 anos, cristas paralelas (dermatoscopia)
- Diâmetro > 7mm

Saida T, Yoshida N, Ikegawa S, Ishihara K, Nakajima T. Clinical guidelines for the early detection of plantar melanoma. J Am Acad Dermatol 1990, 23(1): 37-40.



Arch Dermatol 2005; 141: 1413- 1418

- Amplificação do gene CICLINA D1 é aberração genética encontrada principalmente nos melanomas acrais
- FISH para detectar amplificação da CICLINA D1 nos melanócitos em proliferação nas lesões suspeitas de melanoma acral in situ





Referencias Bibliográficas

1. Saida T. Malignant melanoma on the sole: how to detect the early lesions efficiently. *Pigment Cell Res.* 2000;13 Suppl 8:135-9.
2. Yamaura M, Takata M, Miyazaki A, Saida T. Specific dermoscopy patterns and amplifications of the cyclin D1 gene to define histopathologically unrecognizable early lesions of acral melanoma in situ. *Arch Dermatol* 2005; 141: 1413-1418.
3. Saida T, Yoshida N, Ikegawa S, Ishihara K, Nakajima T. Clinical guidelines for the early detection of plantar malignant melanoma. *J Am Acad Dermatol.* 1990 Jul 23(1): 37-40.
4. Saida T, Yoshida N. Clinical and histopathologic analyses of pigmented macular lesions on the soles of Japanese--proposal of a clinical guideline for detection of early malignant melanoma on the sole. *Nippon Hifuka Gakkai Zasshi.* 1989; Feb 99(2):117-28.