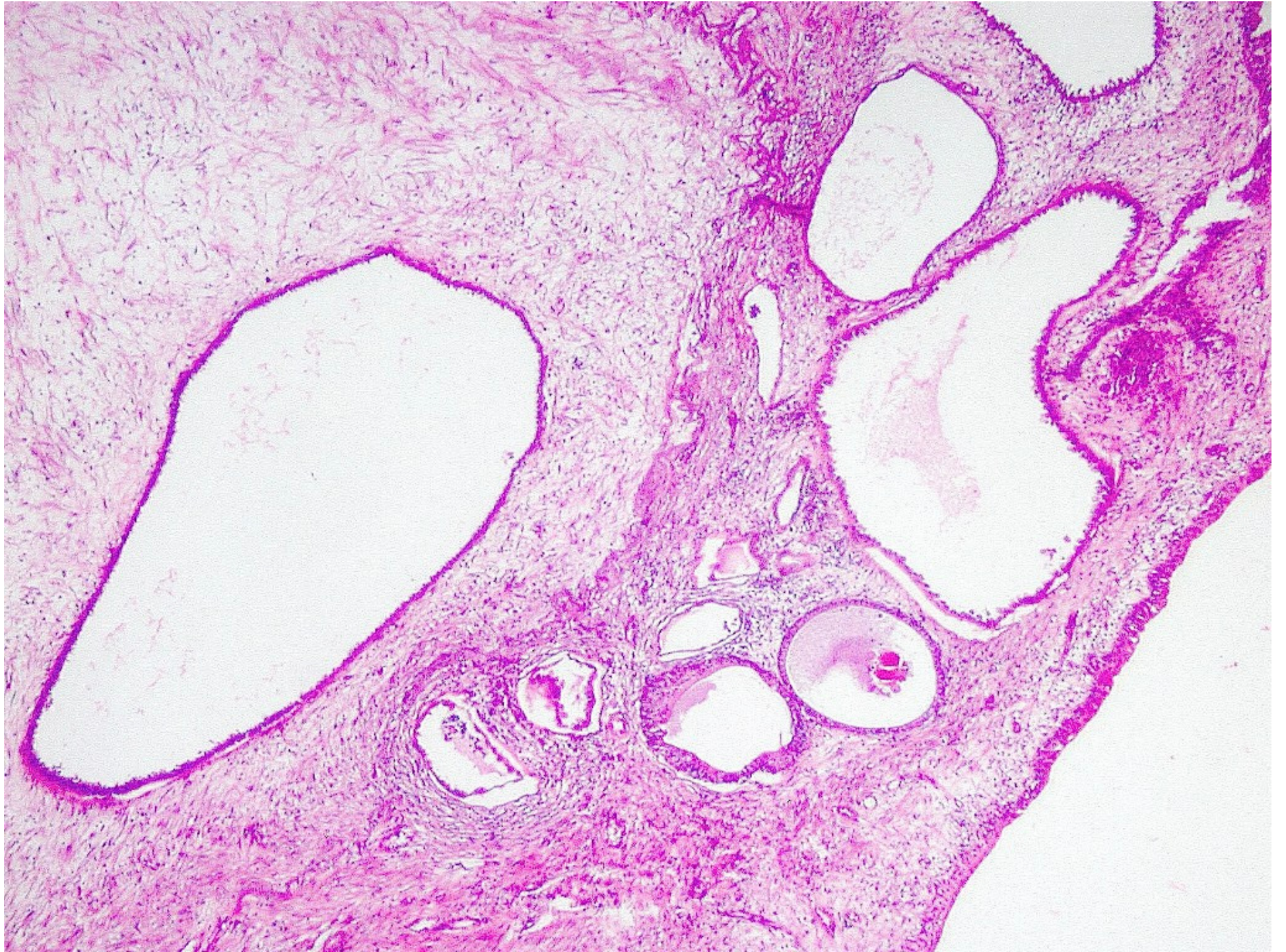


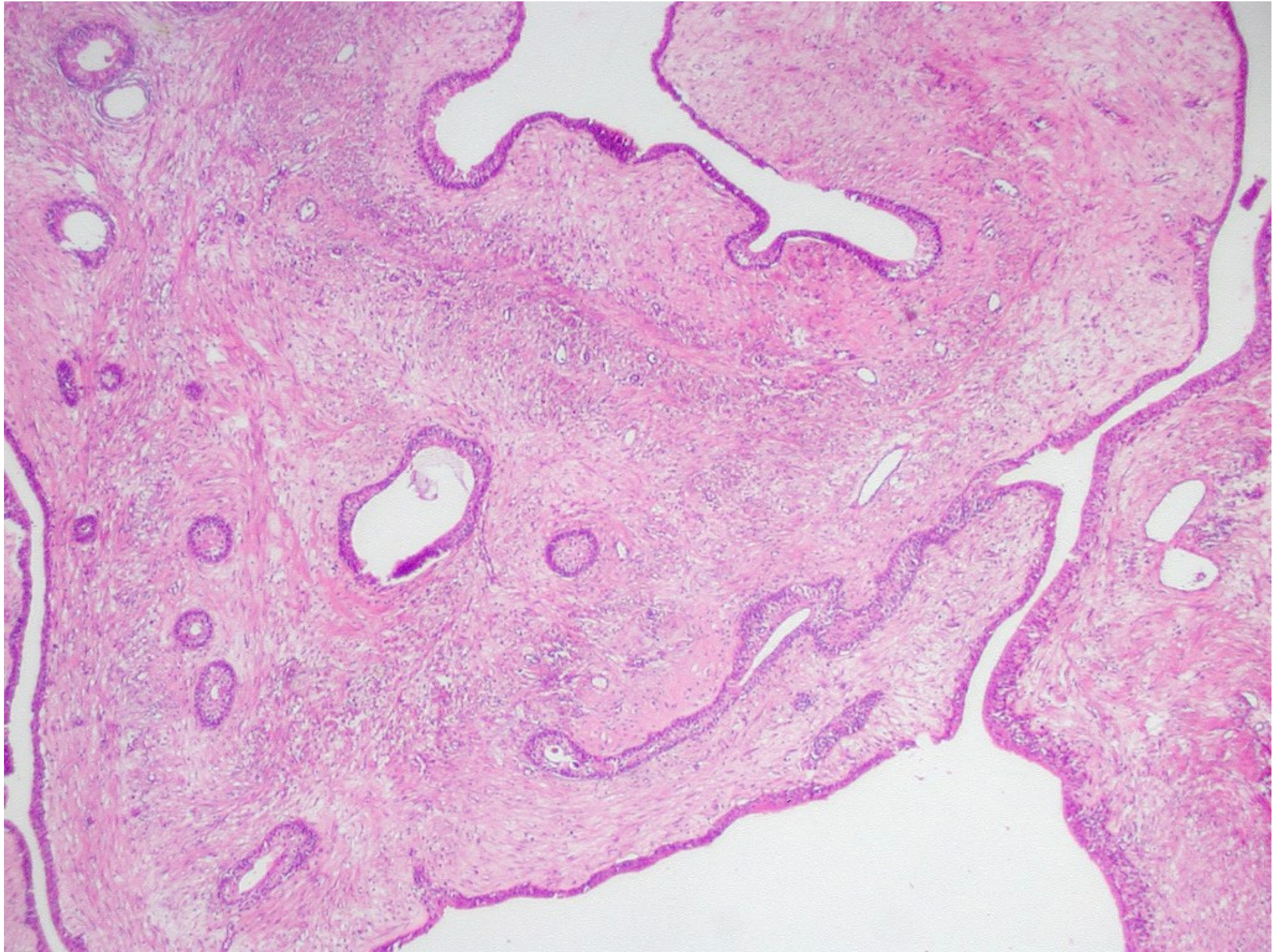
CASO DO MÊS

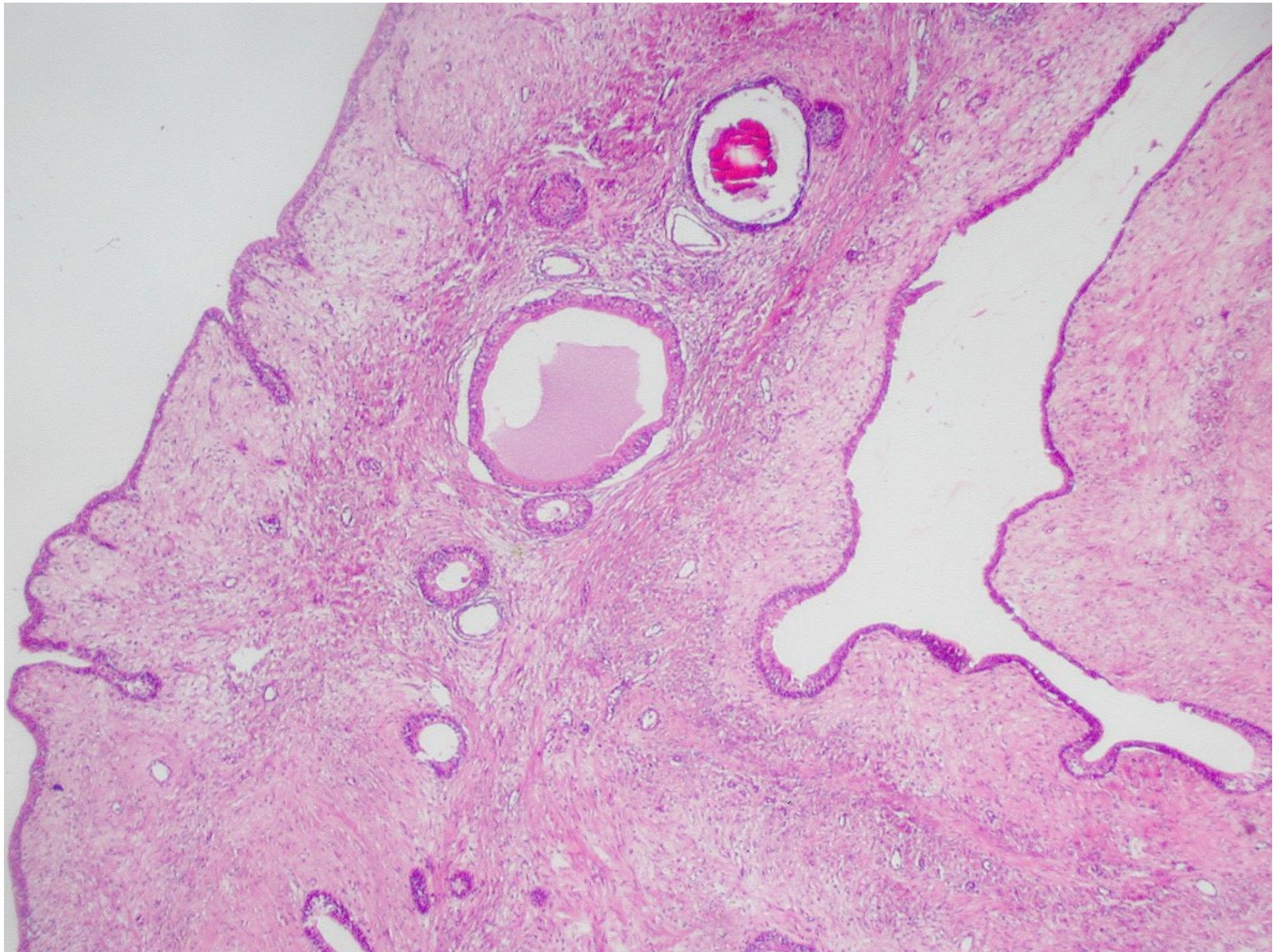
Emílio Marcelo Pereira

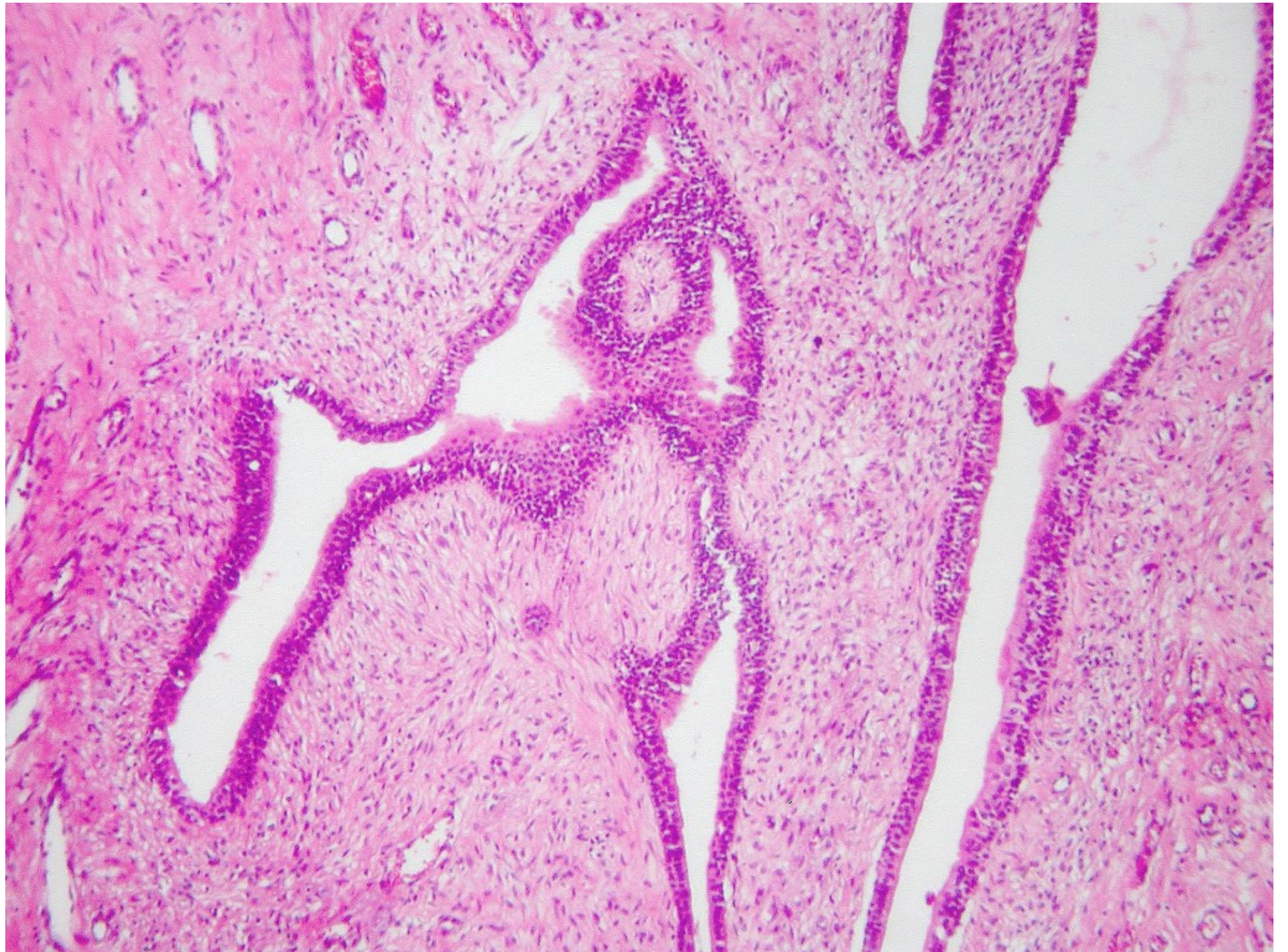
Dados Clínicos

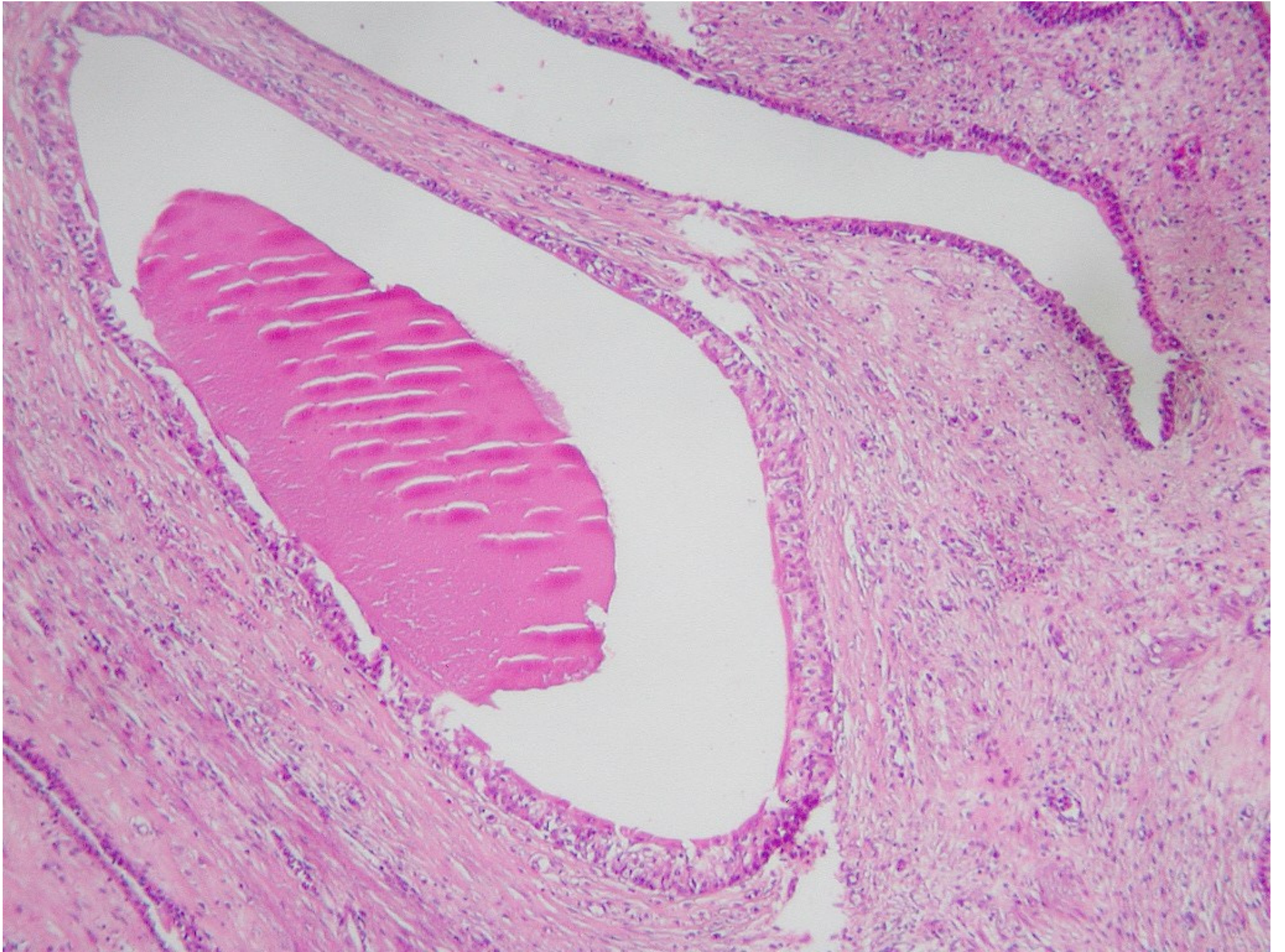
- **Paciente do sexo feminino,**
- **45 anos, tumor do rim direito, medindo 3,5 x 2,5 cm, localizado na região central do rim com extensão para a pelve renal.**

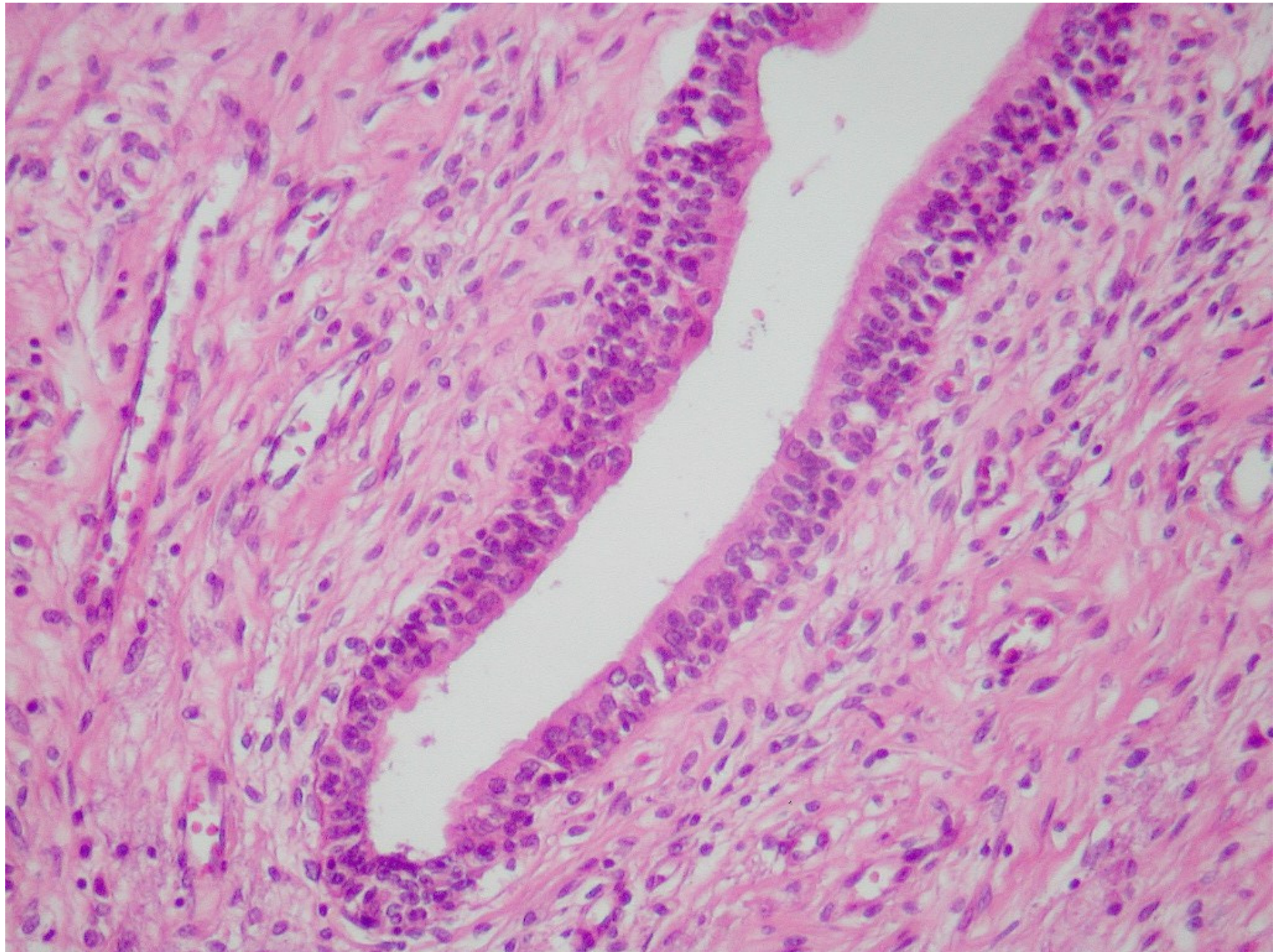


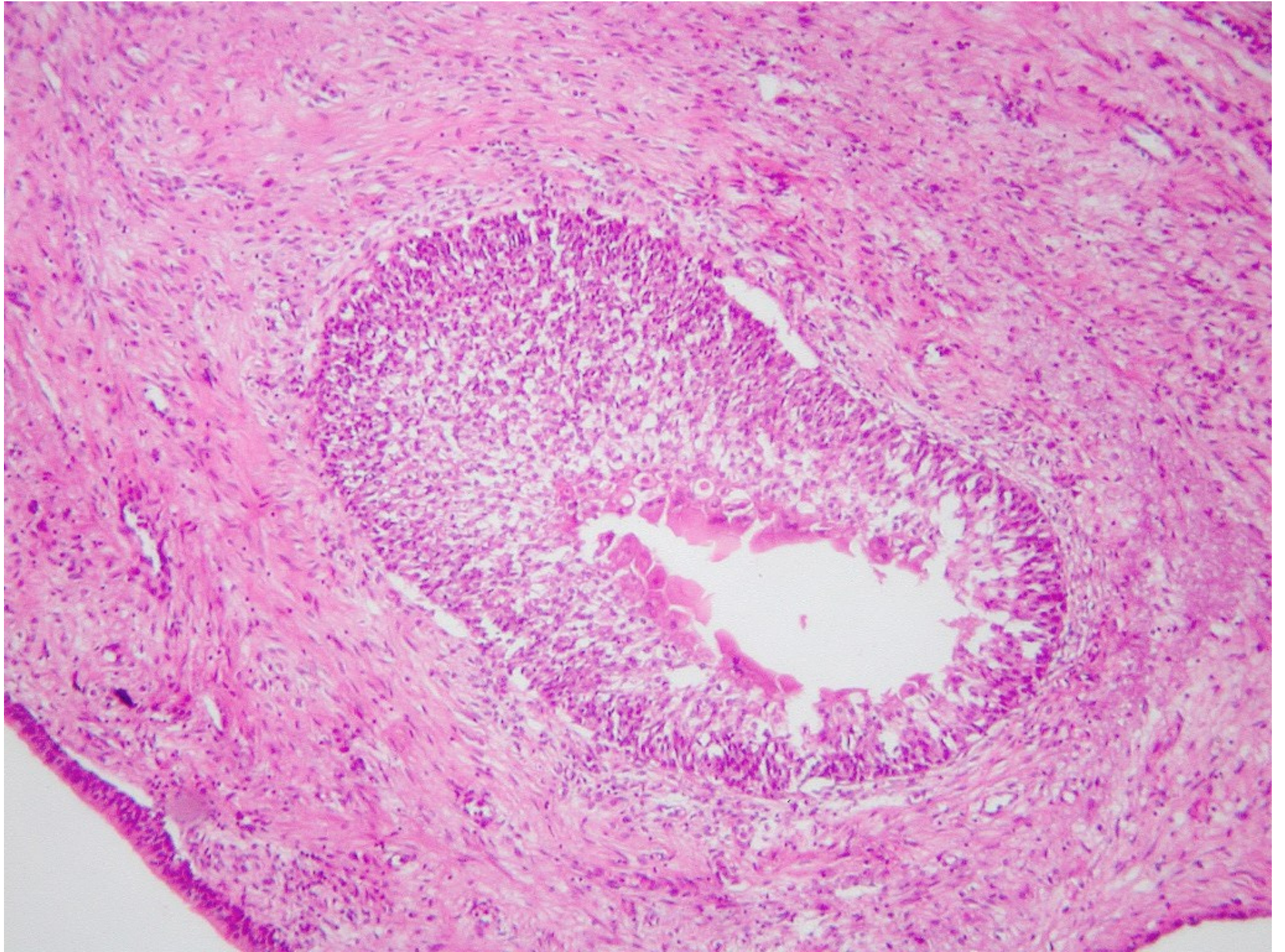


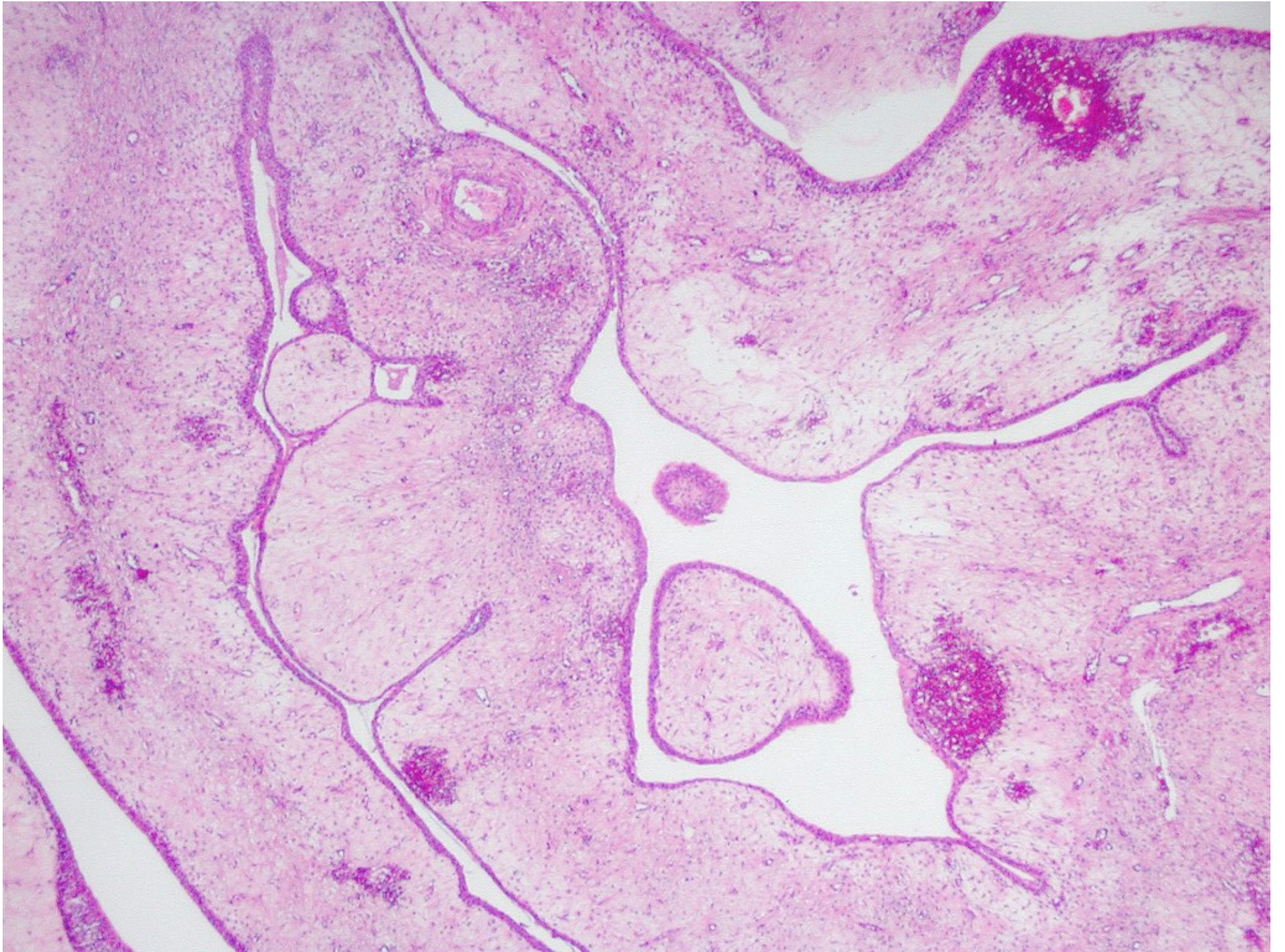


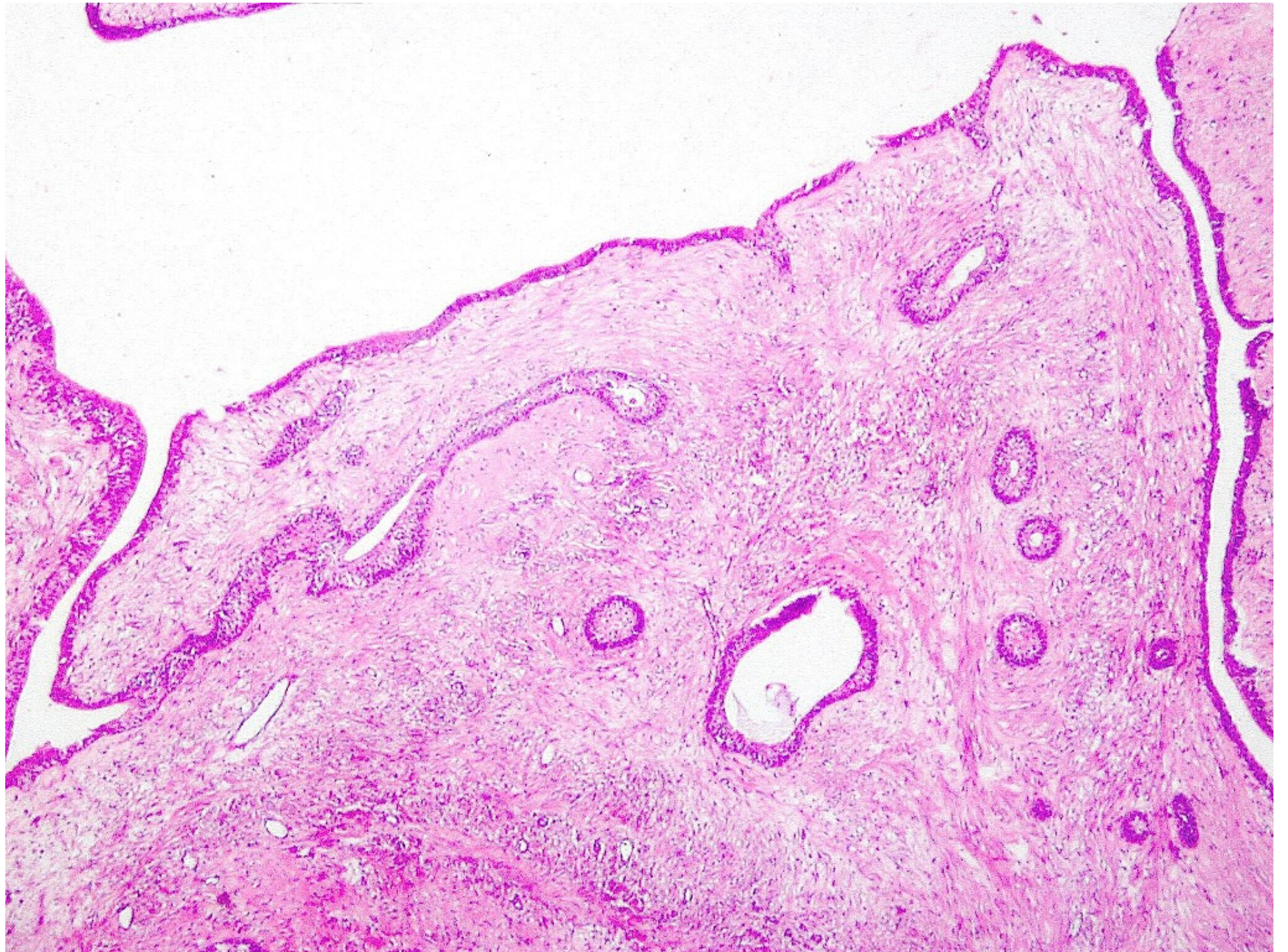


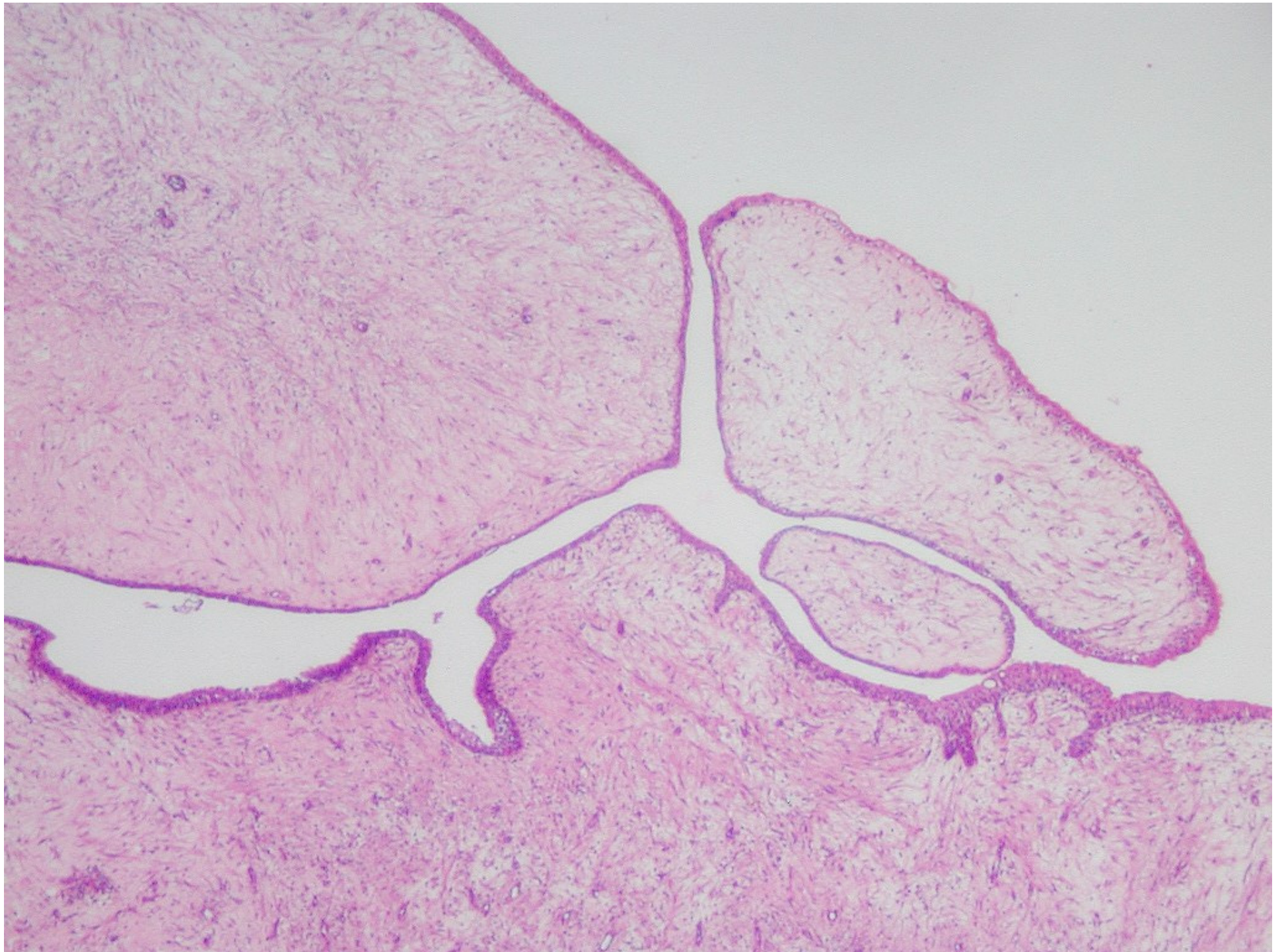


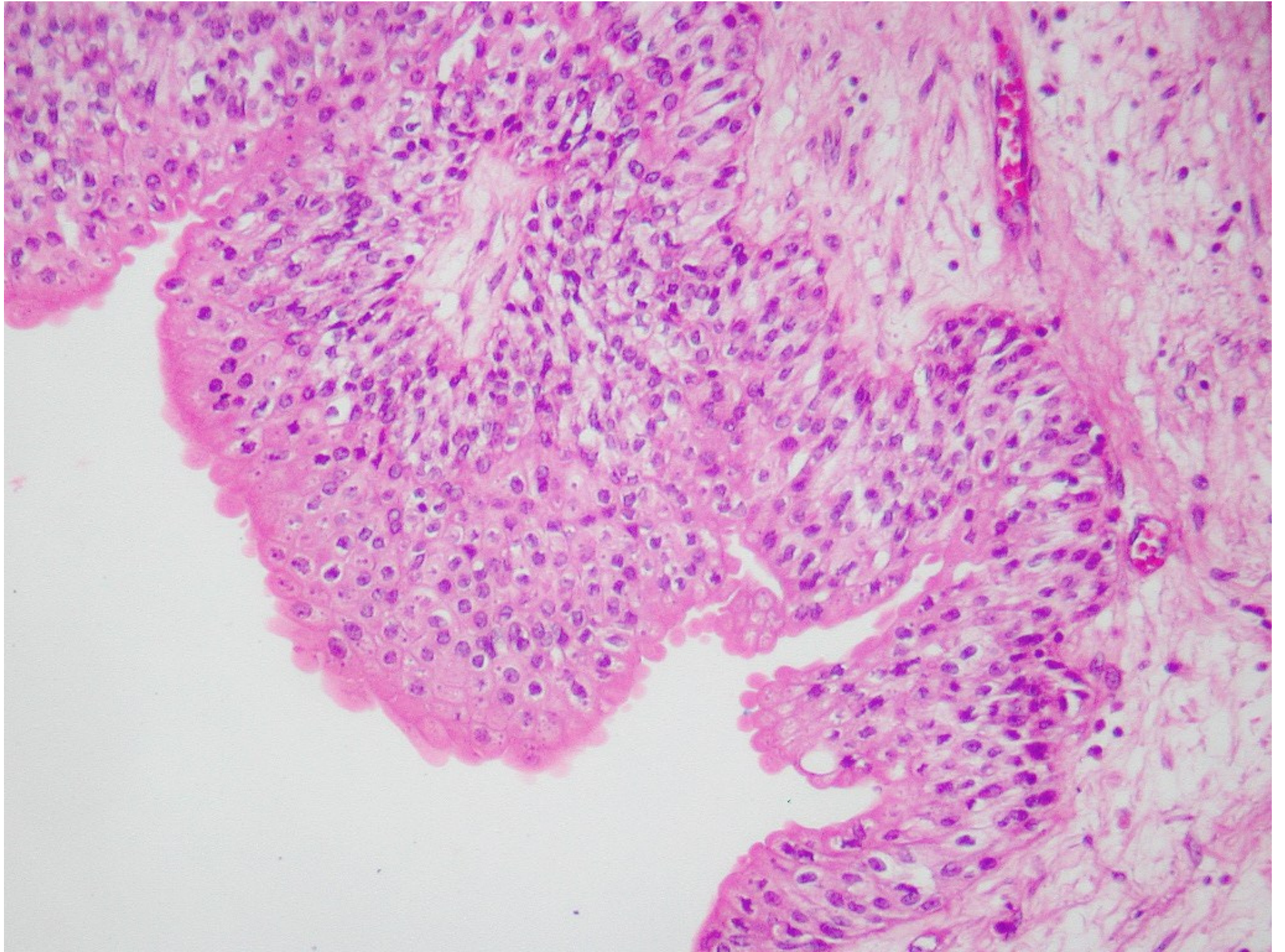


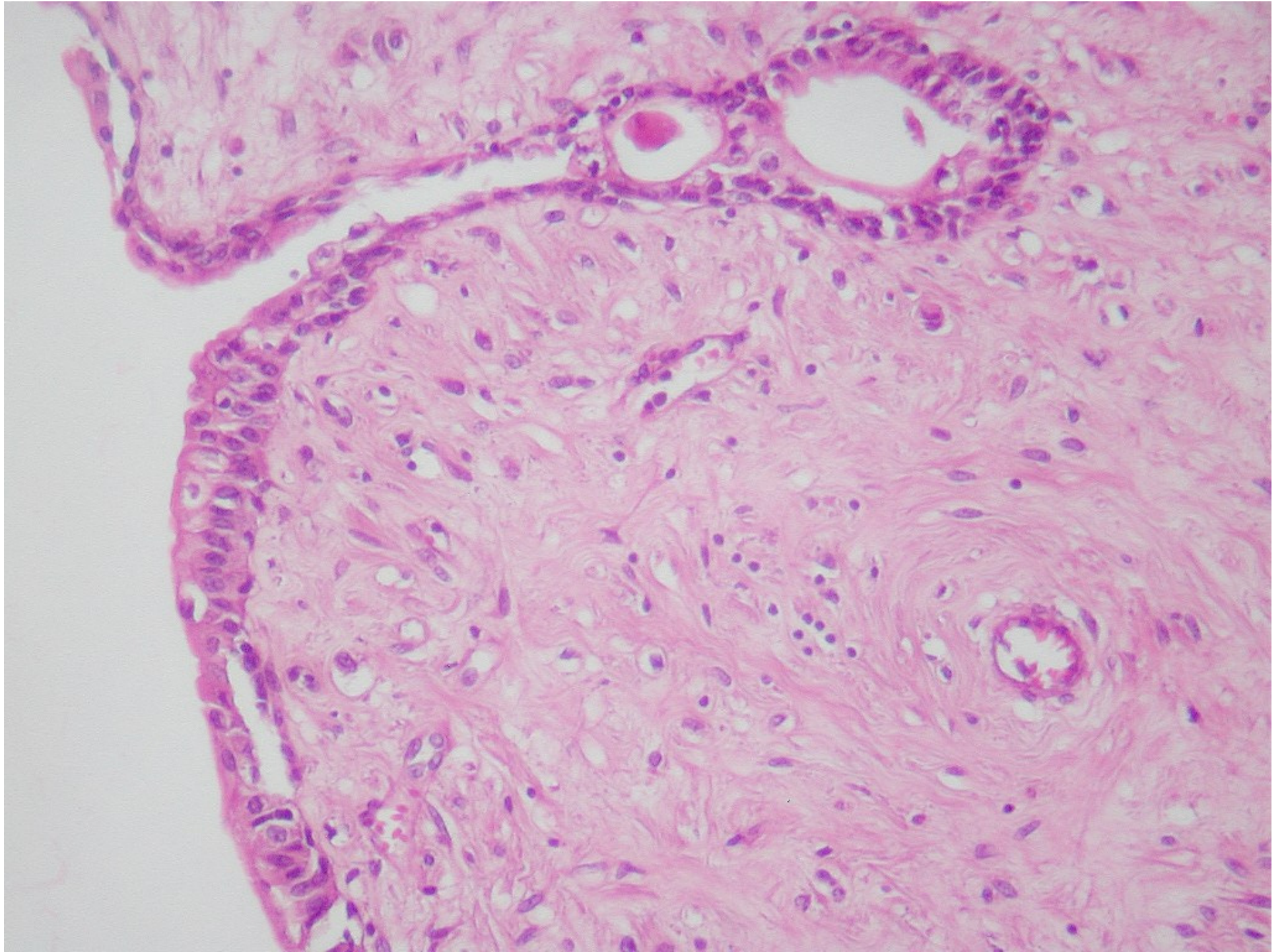


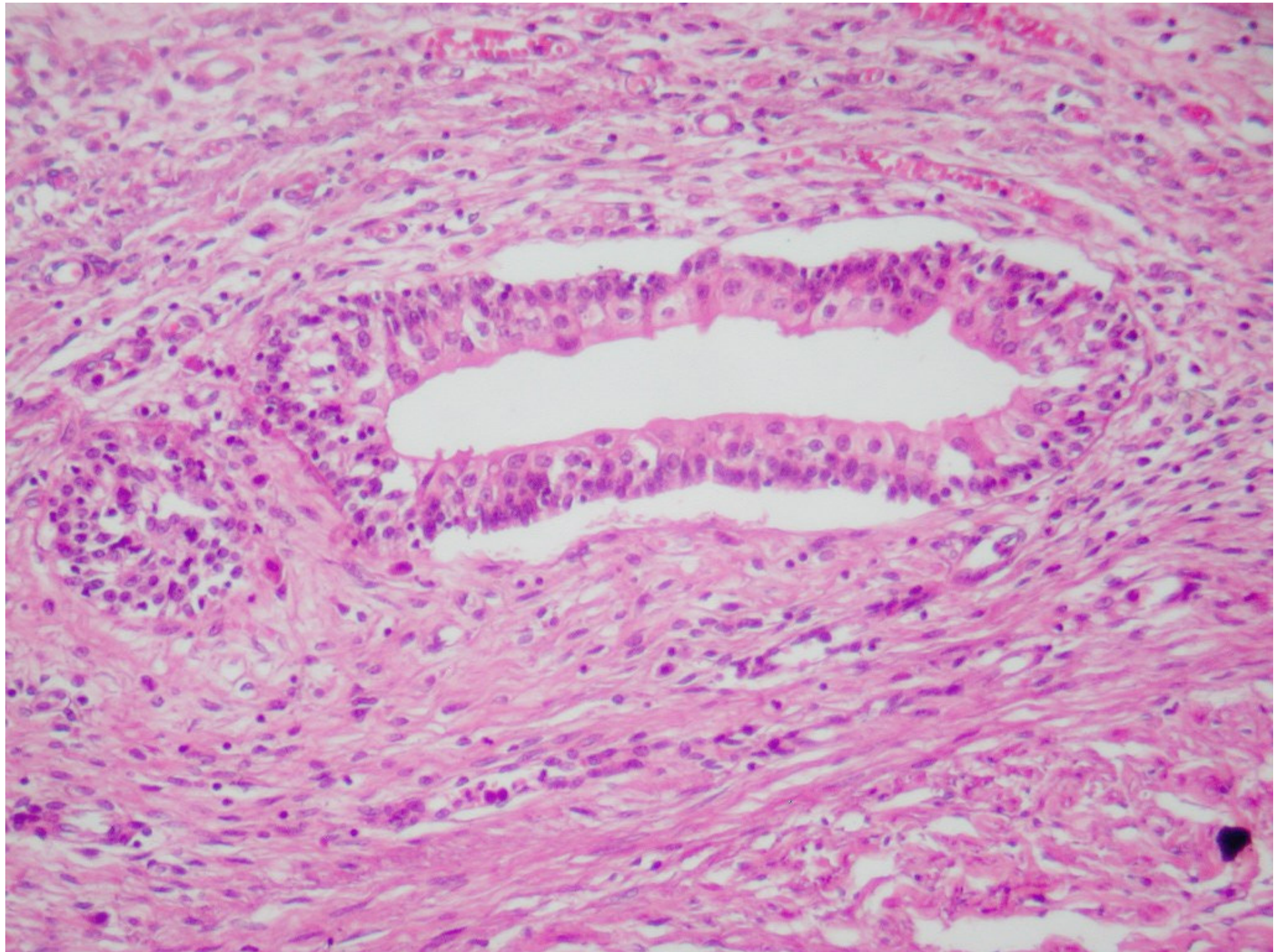


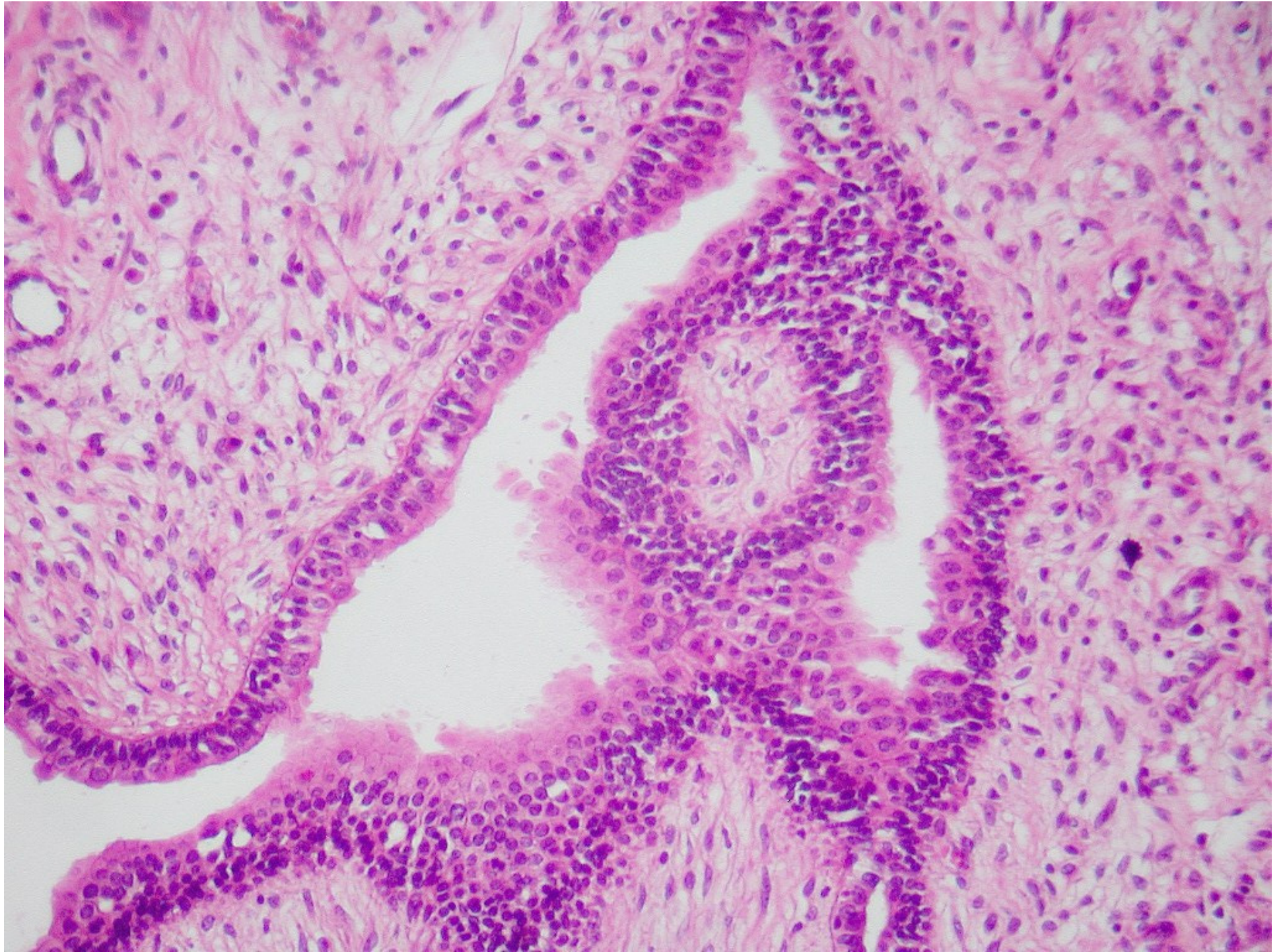


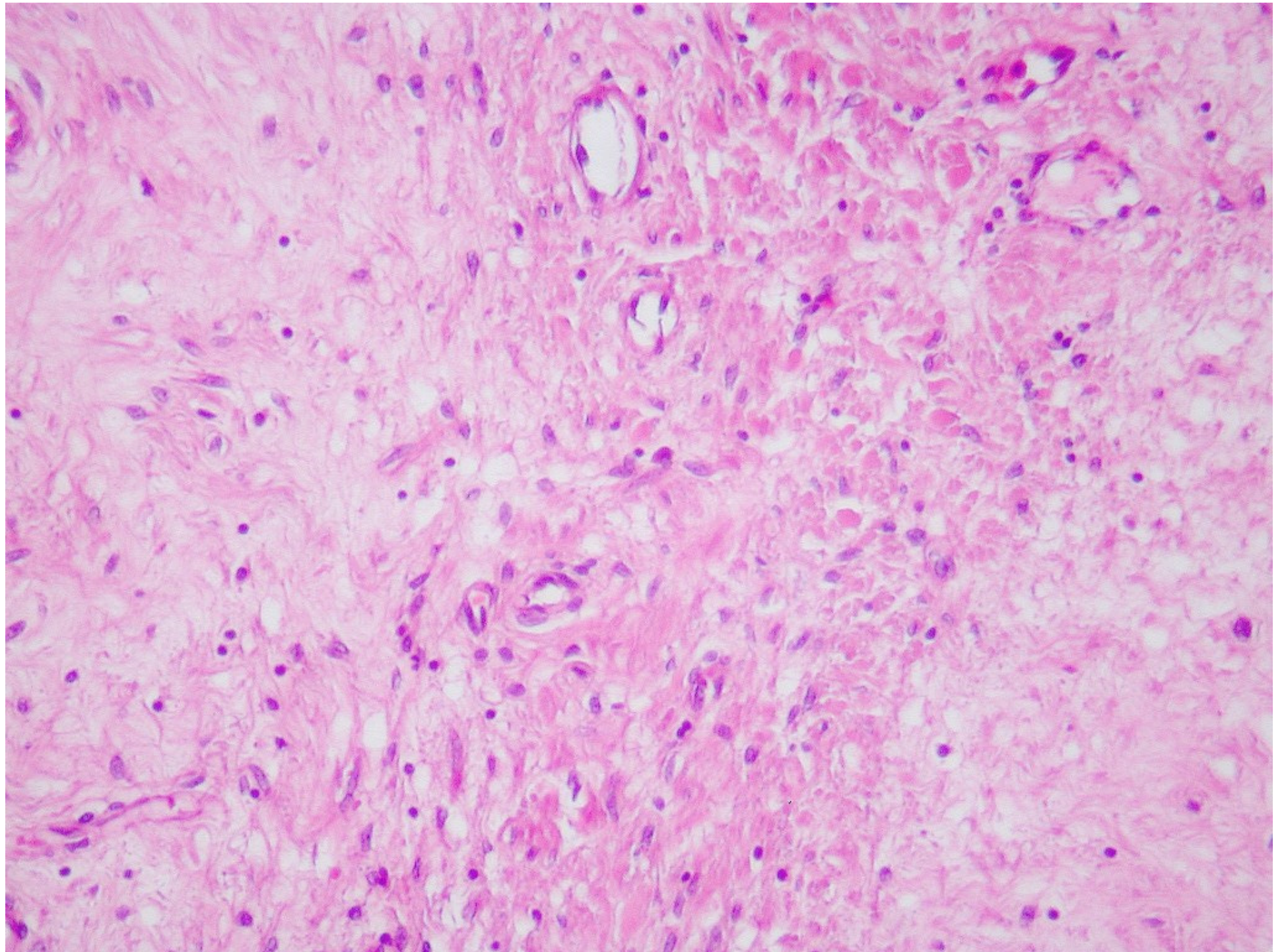












Qual o diagnóstico???

- Nefroma cístico ?
- Angiomiolipoma com cistos ?
- Sarcoma sinovial ?
- Tumor de Wilm's ?
- Tumor misto epitelial e estromal do rim?

Caso do Mês

A SBP
agradece a
sua
participação



Caro Associado,

A SBP oferece mais um instrumento de aprendizado aos sócios e patologistas interessados. Trata-se do Caso do Mês, exibido em nosso site.

Todos os sócios que quiserem enviar seu caso para exibição, podem enviar conforme as instruções em anexo para o endereço casodomes@sbp.org.br.

A SBP agradece a sua participação.